

Avon Hills Forest SNA
North Unit

Stearns County

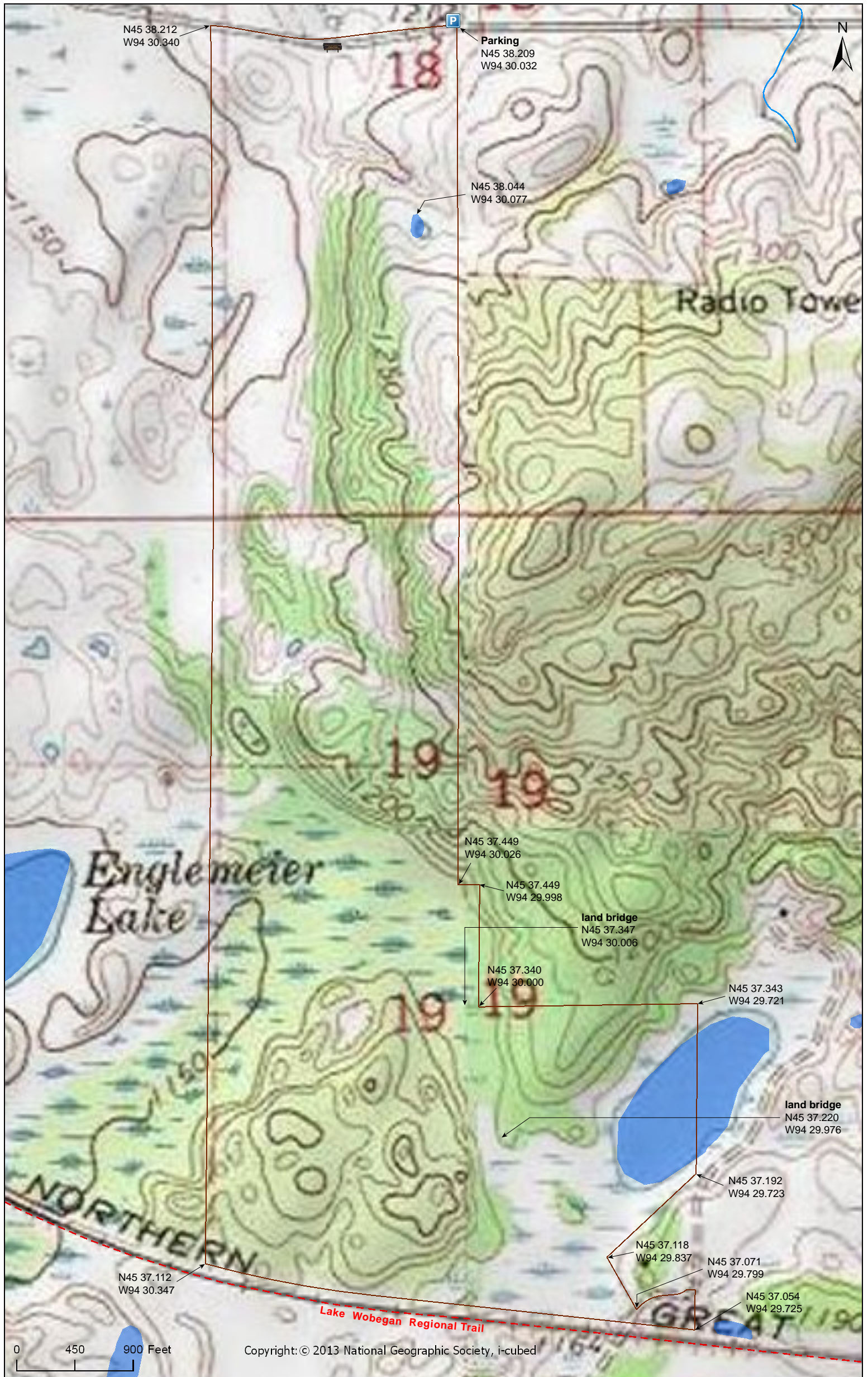


Avon Hills Forest SNA North Unit

Stearns County

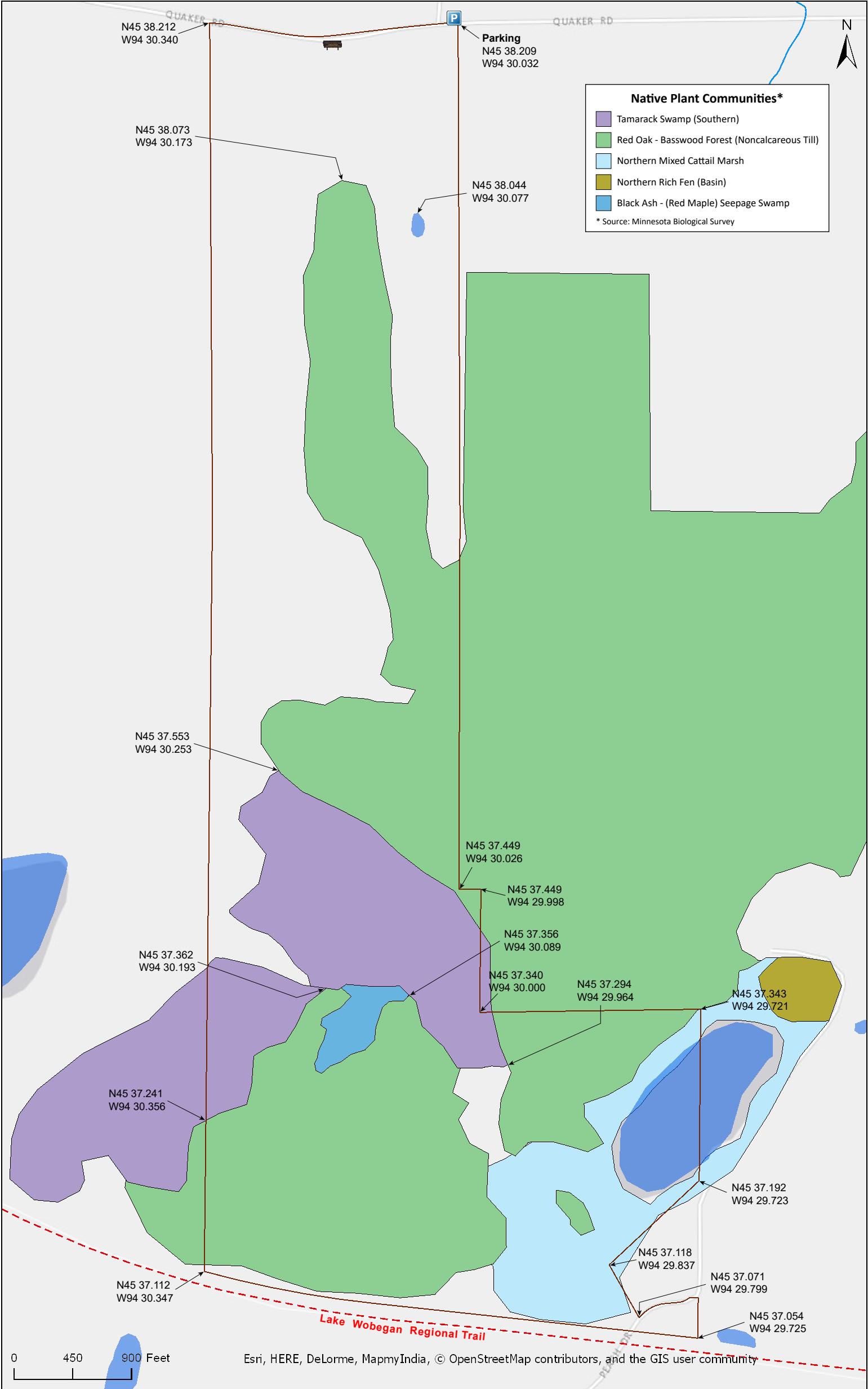


Stearns County



Avon Hills Forest SNA North Unit

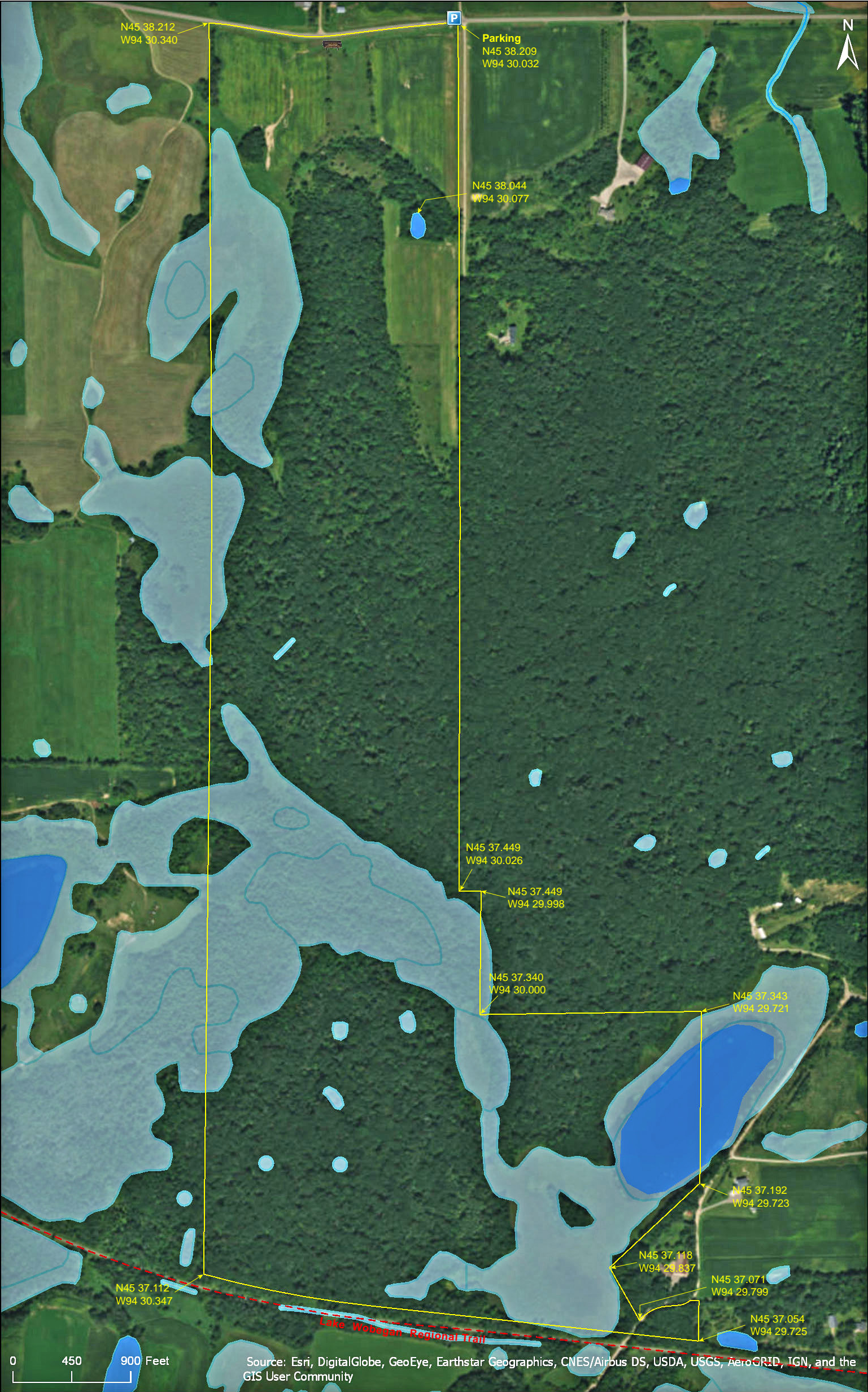
Stearns County



Avon Hills Forest SNA
North Unit

National Wetlands Inventory

Stearns County



Avon Hills Forest SNA North Unit

Directions from Minnesota DNR

Directions: From Avon 1.4 miles W on Co Hwy 54, then 1.8 miles N on Tower Rd, then 0.5 mile W on Quaker Rd. Park on S road shoulder. Hike S into woods of site.

Lat/Lon: 45.636822, -94.500535

This site has no maintained trails or other recreational facilities. This site is in an Audubon Important Bird Area.

Notes from MinnesotaSeasons.com

Parking

N45 38.209, W94 30.032

There is a small parking lot at the northeast corner of the SNA on Quaker Road.

Land Bridges

The red oak/basswood forest is effectively divided into two sections by a tamarack swamp. The southwestern section of forest comprises about 20% of the SNA. This section can be accessed by crossing one of two “land bridges”, raised areas about the width of an old forest road. The locations of these crossings and their GPS coordinates are marked on the physical map.

DISCLAIMER OF WARRANTIES AND LIMITATIONS OF LIABILITY

MinnesotaSeasons.com, The Nature Conservancy, U.S. Department of Agriculture, Forest Service, U.S. Fish and Wildlife Service, the state of Minnesota, the Minnesota Department of Natural Resources, and their employees, make no representations or warranties, express or implied, with respect to the use of or reliance on the data provided herewith, regardless of its format or means of transmission. There are no guarantees or representations to the user as to the accuracy, currency, completeness, suitability or reliability of this data for any purpose. THE USER ACCEPTS THE DATA AND/OR SOFTWARE "AS IS" AND ASSUMES ALL RISKS ASSOCIATED WITH ITS USE.

IN NO EVENT SHALL MINNESOTASEASONS.COM, TNC, USDA-FS, USFWS, OR MNDNR BE LIABLE FOR ANY DIRECT, INDIRECT, INCIDENTAL, SPECIAL, EXEMPLARY, OR CONSEQUENTIAL DAMAGES (INCLUDING, BUT NOT LIMITED TO, PROCUREMENT OF SUBSTITUTE GOODS OR SERVICES; LOSS OF USE, DATA, OR PROFITS; OR BUSINESS INTERRUPTION) HOWEVER CAUSED AND ON ANY THEORY OF LIABILITY, WHETHER IN CONTRACT, STRICT LIABILITY, OR TORT (INCLUDING NEGLIGENCE OR OTHERS) ARISING IN ANY WAY OUT OF THE USE OF THIS DATA, EVEN IF ADVISED OF THE POSSIBILITY OF SUCH DAMAGE OR FOR ANY CLAIM BY ANY OTHER PARTY.

Your use of the data is acceptance on your part of the terms and conditions set forth herein.