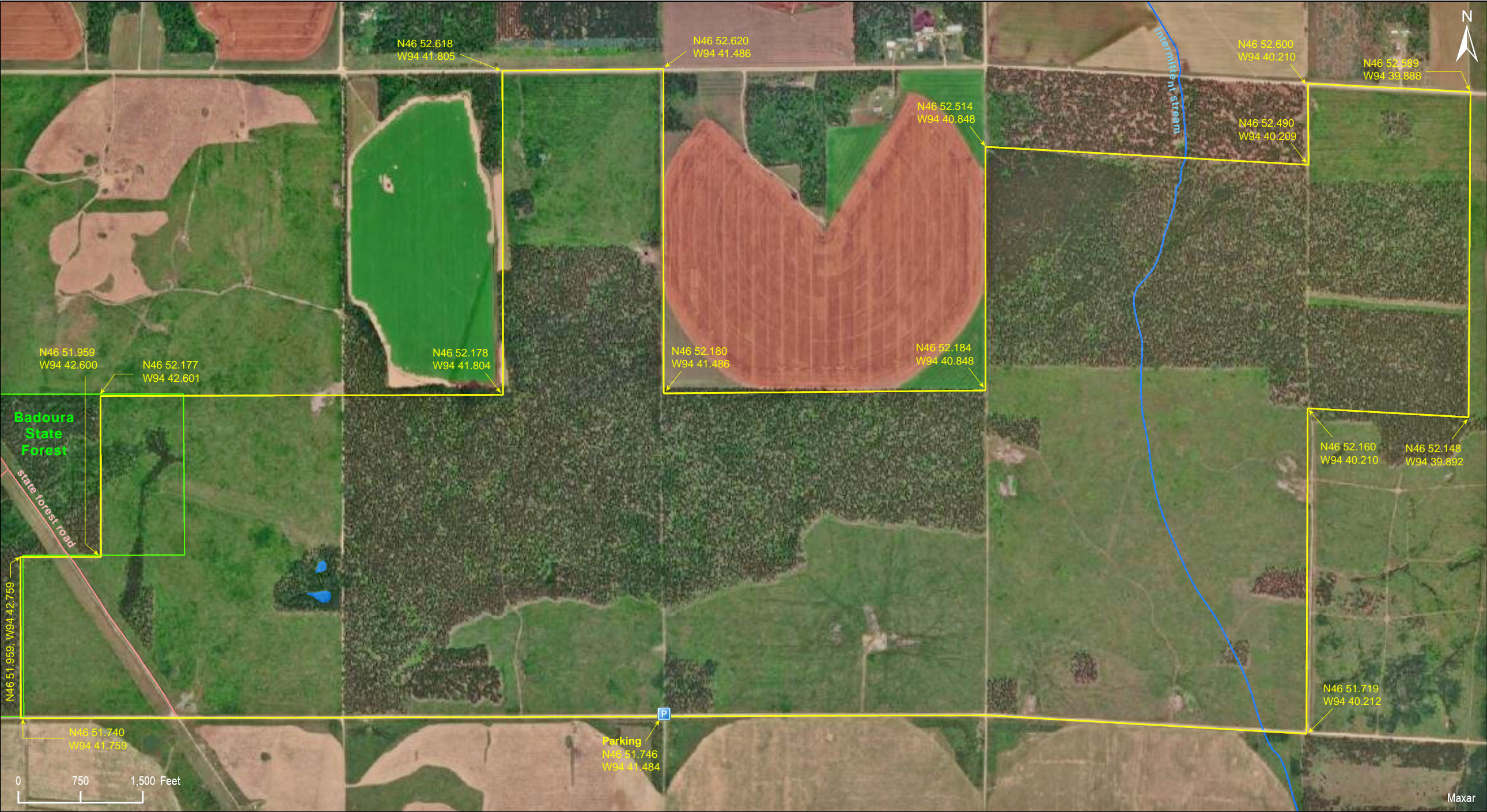


Badoura Jack Pine Woodland SNA

Hubbard County



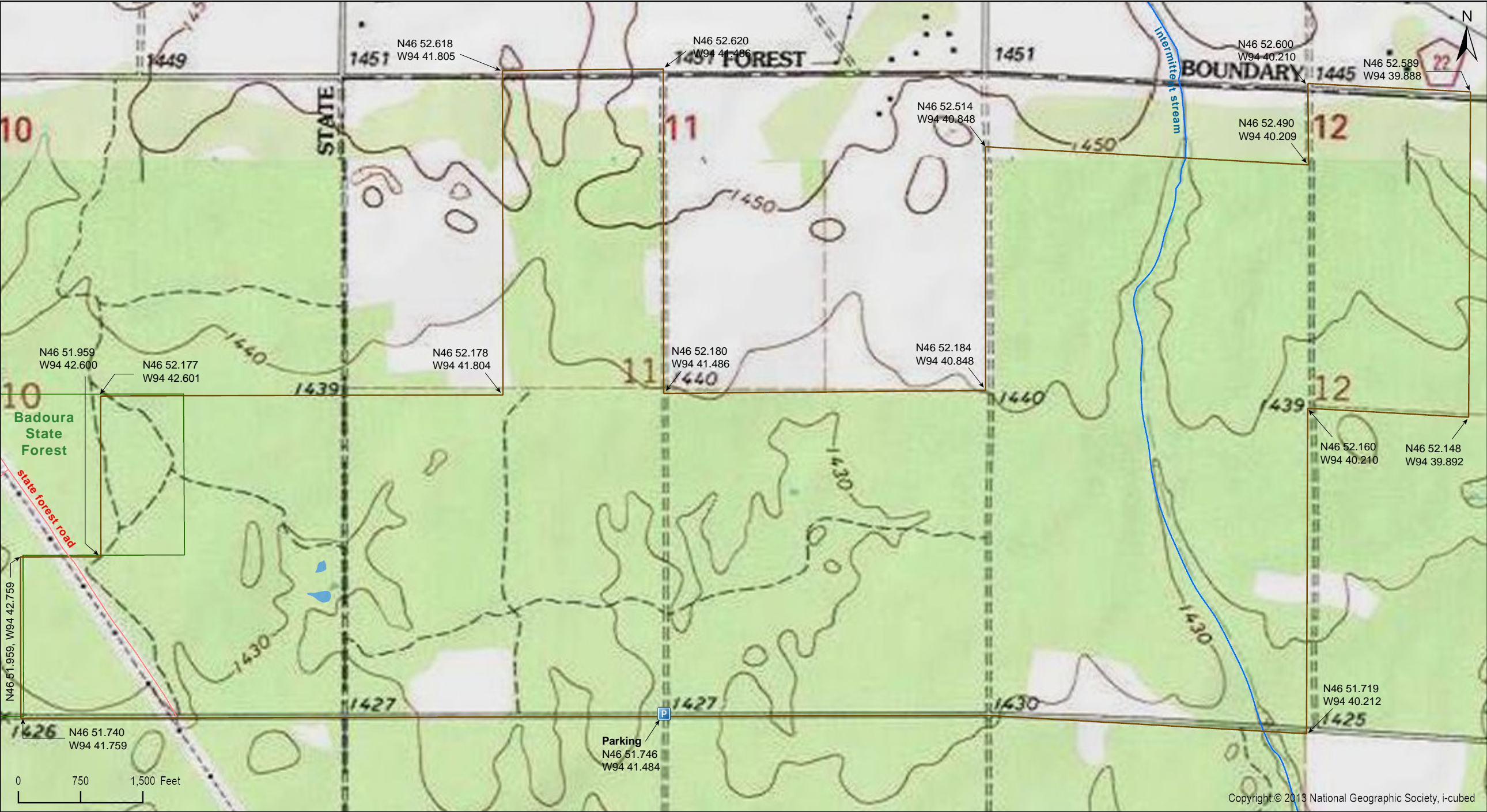
Badoura Jack Pine Woodland SNA

Hubbard County



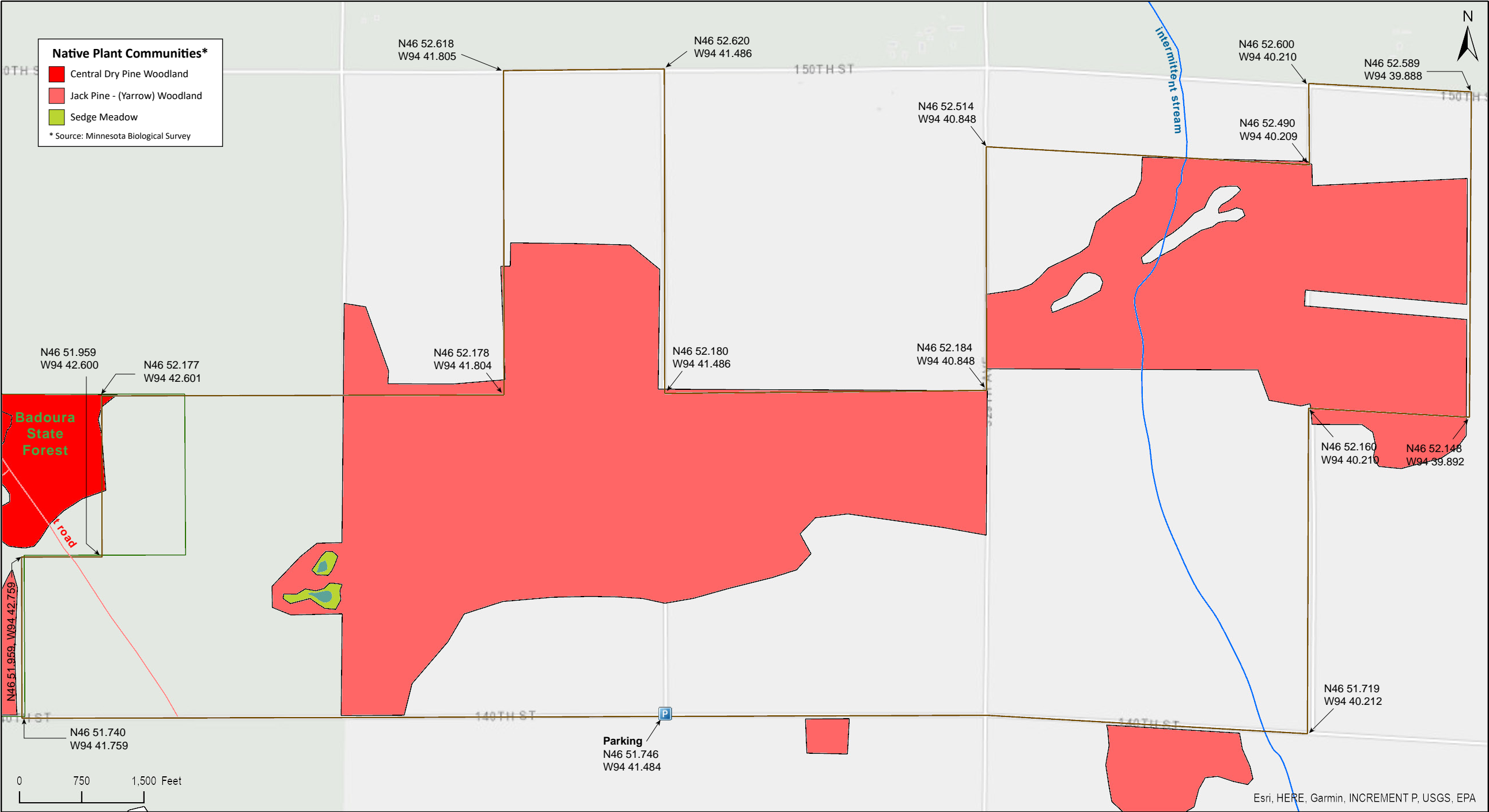
Badoura Jack Pine Woodland SNA

Hubbard County

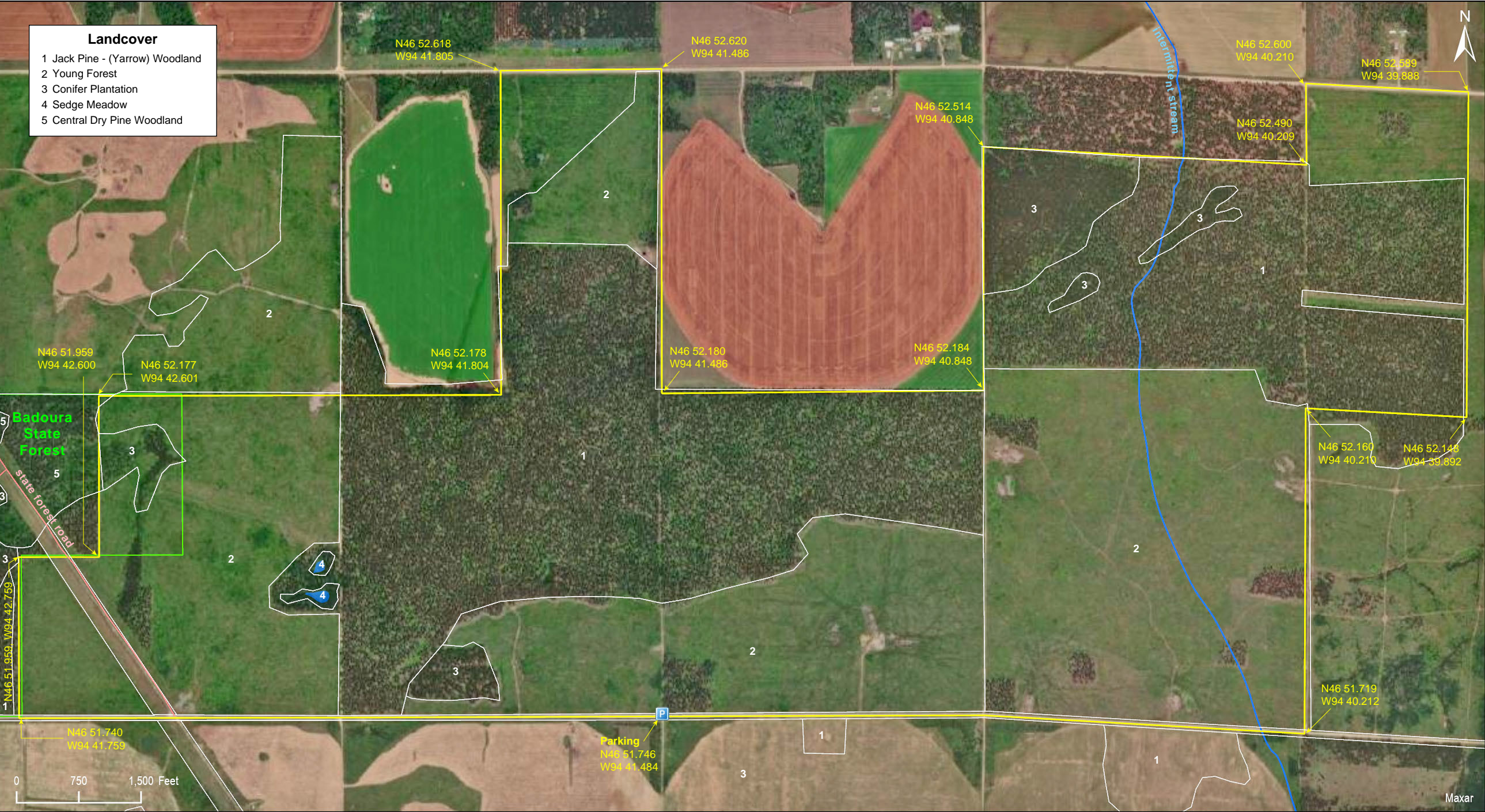


Badoura Jack Pine Woodland SNA

Hubbard County







Badoura Jack Pine Woodland SNA

Directions and Notes from Minnesota DNR

Directions

From the Badoura State Forest Nursery office at the junction of MN Hwys 64 and 87, 1.5 miles E on 140th St. Park at gate on N.

Lat/Lon

46.862439, -94.691406

This site has no maintained trails or other recreational facilities. This site is adjacent to Badoura State Forest.

Notes from MinnesotaSeasons.com

Parking

Park at the gate on the north side of 140th St.
N46 51.746, W94 41.484

Hiking Trails

There are no maintained hiking trails. Almost 3.5 miles of township roads, including 329th Ave., pass through and border the site from north to south. Another 2.9 miles of forest roads meander through the site.

DISCLAIMER OF WARRANTIES AND LIMITATIONS OF LIABILITY

MinnesotaSeasons.com, The Nature Conservancy, U.S. Department of Agriculture, Forest Service, U.S. Fish and Wildlife Service, the state of Minnesota, the Minnesota Department of Natural Resources, and their employees, make no representations or warranties, express or implied, with respect to the use of or reliance on the data provided herewith, regardless of its format or means of transmission. There are no guarantees or representations to the user as to the accuracy, currency, completeness, suitability or reliability of this data for any purpose. THE USER ACCEPTS THE DATA AND/OR SOFTWARE "AS IS" AND ASSUMES ALL RISKS ASSOCIATED WITH ITS USE.

IN NO EVENT SHALL MINNESOTASEASONS.COM, TNC, USDA-FS, USFWS, OR MNDNR BE LIABLE FOR ANY DIRECT, INDIRECT, INCIDENTAL, SPECIAL, EXEMPLARY, OR CONSEQUENTIAL DAMAGES (INCLUDING, BUT NOT LIMITED TO, PROCUREMENT OF SUBSTITUTE GOODS OR SERVICES; LOSS OF USE, DATA, OR PROFITS; OR BUSINESS INTERRUPTION) HOWEVER CAUSED AND ON ANY THEORY OF LIABILITY, WHETHER IN CONTRACT, STRICT LIABILITY, OR TORT (INCLUDING NEGLIGENCE OR OTHERS) ARISING IN ANY WAY OUT OF THE USE OF THIS DATA, EVEN IF ADVISED OF THE POSSIBILITY OF SUCH DAMAGE OR FOR ANY CLAIM BY ANY OTHER PARTY.

Your use of the data is acceptance on your part of the terms and conditions set forth herein.