

# Big Woods Heritage Forest WMA

Rice County





# Big Woods Heritage Forest WMA

Rice County



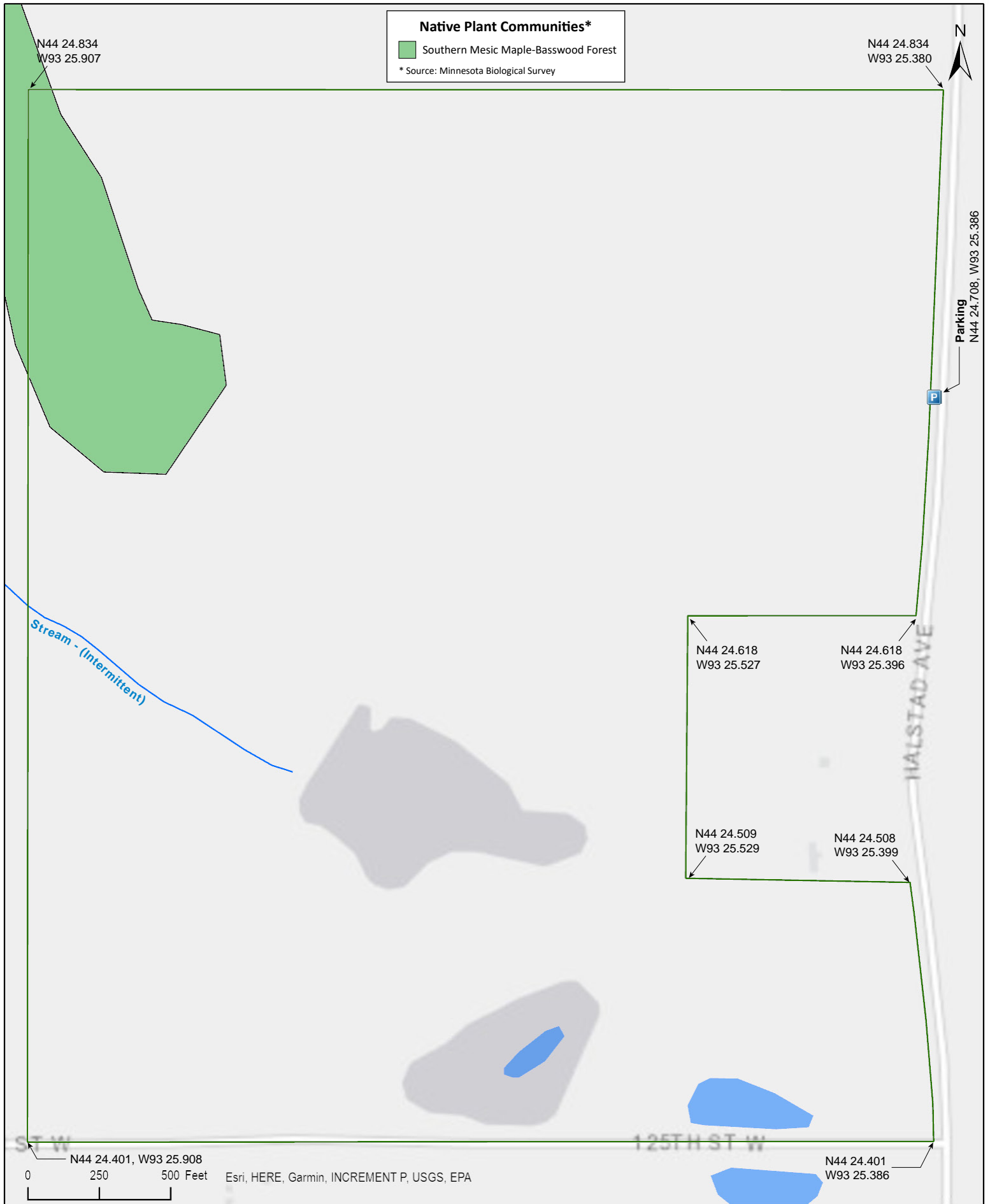
# Big Woods Heritage Forest WMA

Rice County



# Big Woods Heritage Forest WMA

Rice County













# Big Woods Heritage Forest WMA

## **Directions and Notes from Minnesota DNR**

### **Directions**

Travel 0.5 miles northwest on Trunk Highway 21 to Rice County 62 (Halstad Avenue). Travel about 2.3 miles north on Halstad Avenue. The WMA is on the west side of the road.

The area is readily accessed from Halstad Avenue and 125th Street West. A small developed parking area is currently available off Halstad Avenue in and a second area is located off 125th Street West in the southwestern portion of the unit.

### **Visitor Alert**

Please consider your safety and the safety of others if you choose to park along the roadside when visiting this area. Steep topography limits visibility for drivers in some locations and roads can be icy in winter. Several residences are adjacent to this WMA. Please respect private property.

## **Notes from MinnesotaSeasons.com**

### **Parking**

There is a field access on the west side of Halstad Ave. at the eastern boundary of the WMA. Park on the field access. N44 24.708, W93 25.386

## **DISCLAIMER OF WARRANTIES AND LIMITATIONS OF LIABILITY**

MinnesotaSeasons.com, The Nature Conservancy, U.S. Department of Agriculture, Forest Service, U.S. Fish and Wildlife Service, the state of Minnesota, the Minnesota Department of Natural Resources, and their employees, make no representations or warranties, express or implied, with respect to the use of or reliance on the data provided herewith, regardless of its format or means of transmission. There are no guarantees or representations to the user as to the accuracy, currency, completeness, suitability or reliability of this data for any purpose. THE USER ACCEPTS THE DATA AND/OR SOFTWARE "AS IS" AND ASSUMES ALL RISKS ASSOCIATED WITH ITS USE.

IN NO EVENT SHALL MINNESOTASEASONS.COM, TNC, USDA-FS, USFWS, OR MNDNR BE LIABLE FOR ANY DIRECT, INDIRECT, INCIDENTAL, SPECIAL, EXEMPLARY, OR CONSEQUENTIAL DAMAGES (INCLUDING, BUT NOT LIMITED TO, PROCUREMENT OF SUBSTITUTE GOODS OR SERVICES; LOSS OF USE, DATA, OR PROFITS; OR BUSINESS INTERRUPTION) HOWEVER CAUSED AND ON ANY THEORY OF LIABILITY, WHETHER IN CONTRACT, STRICT LIABILITY, OR TORT (INCLUDING NEGLIGENCE OR OTHERS) ARISING IN ANY WAY OUT OF THE USE OF THIS DATA, EVEN IF ADVISED OF THE POSSIBILITY OF SUCH DAMAGE OR FOR ANY CLAIM BY ANY OTHER PARTY.

Your use of the data is acceptance on your part of the terms and conditions set forth herein.