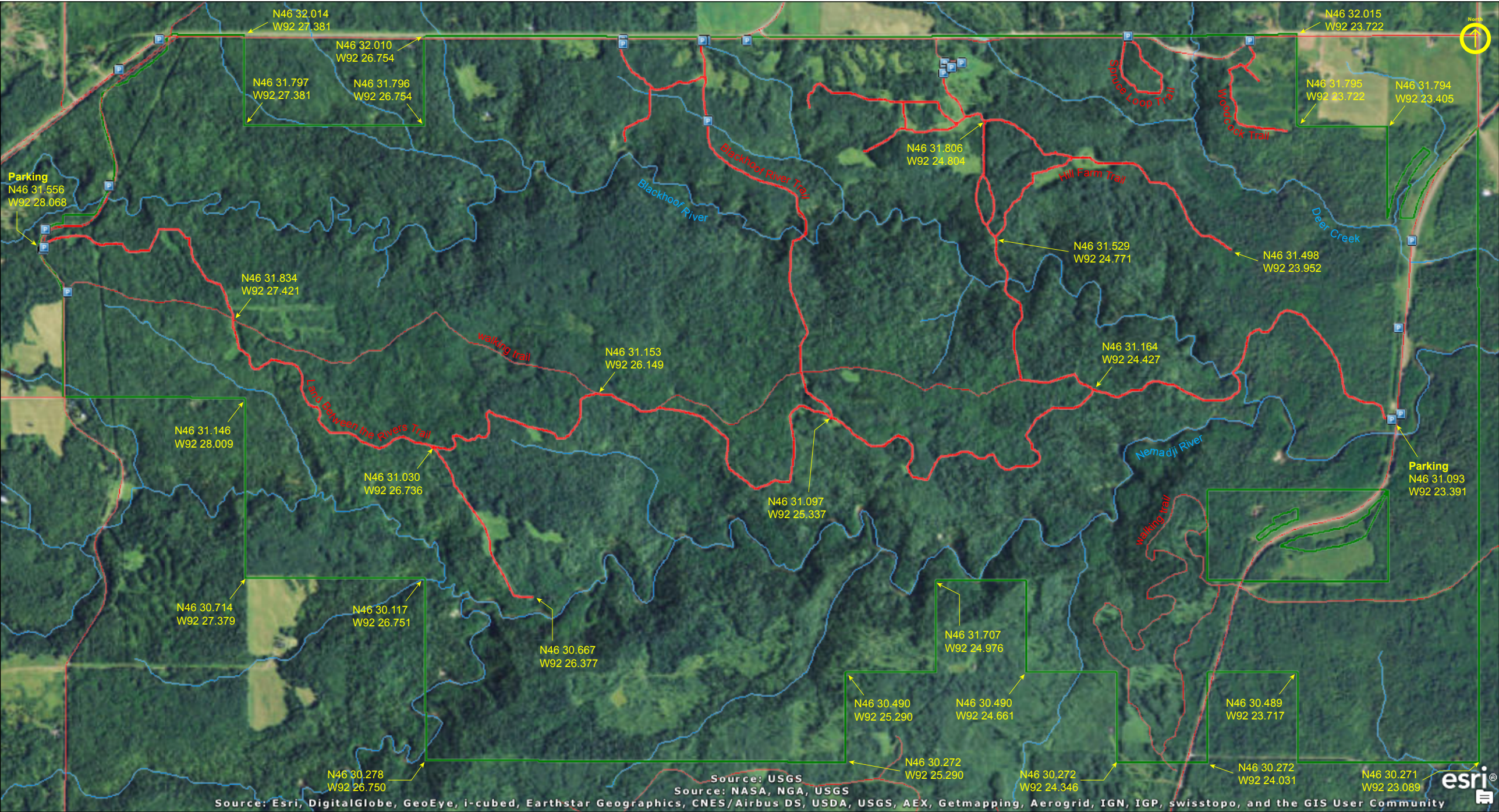


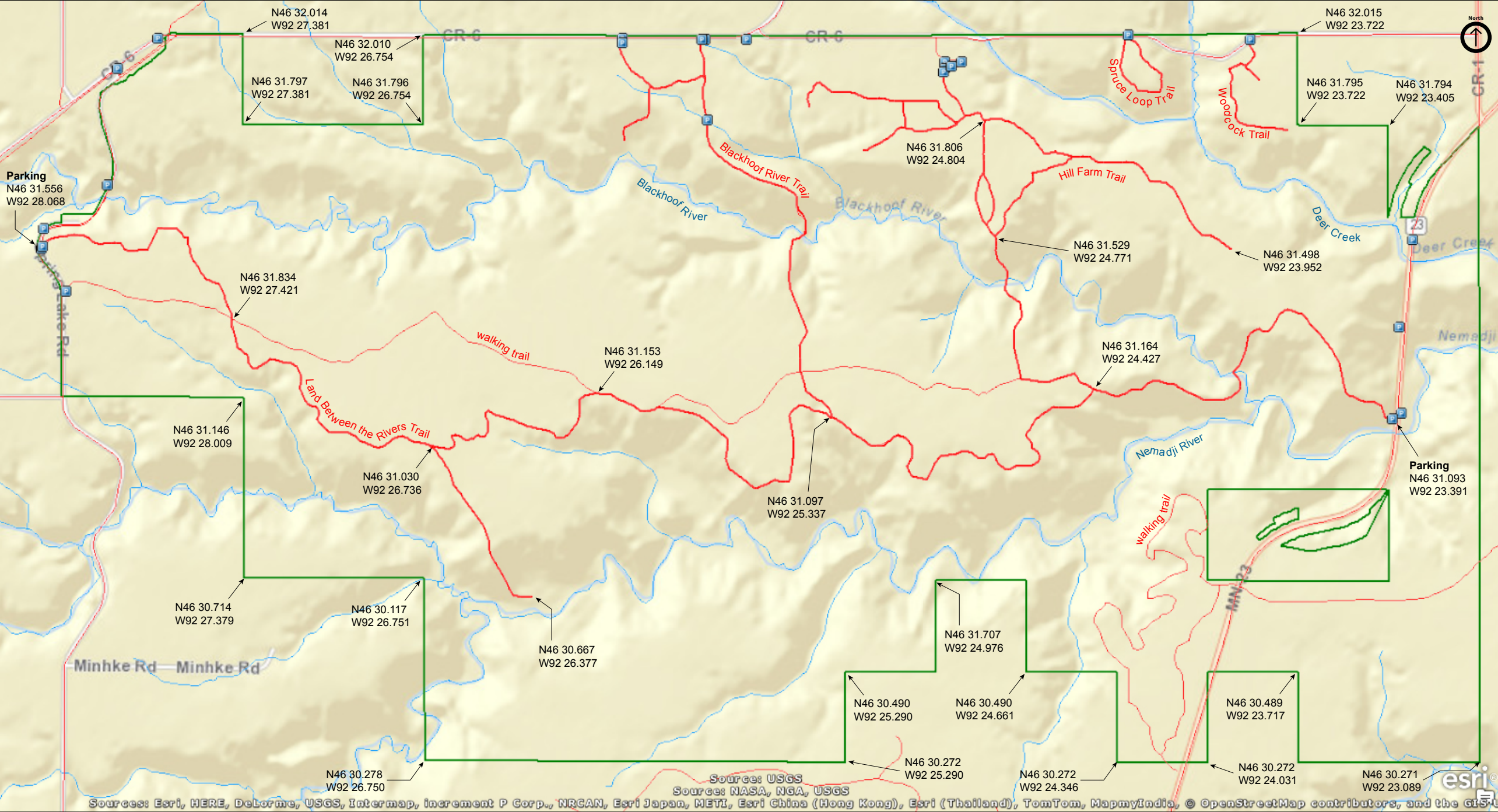
Blackhoof River WMA

Carlton County



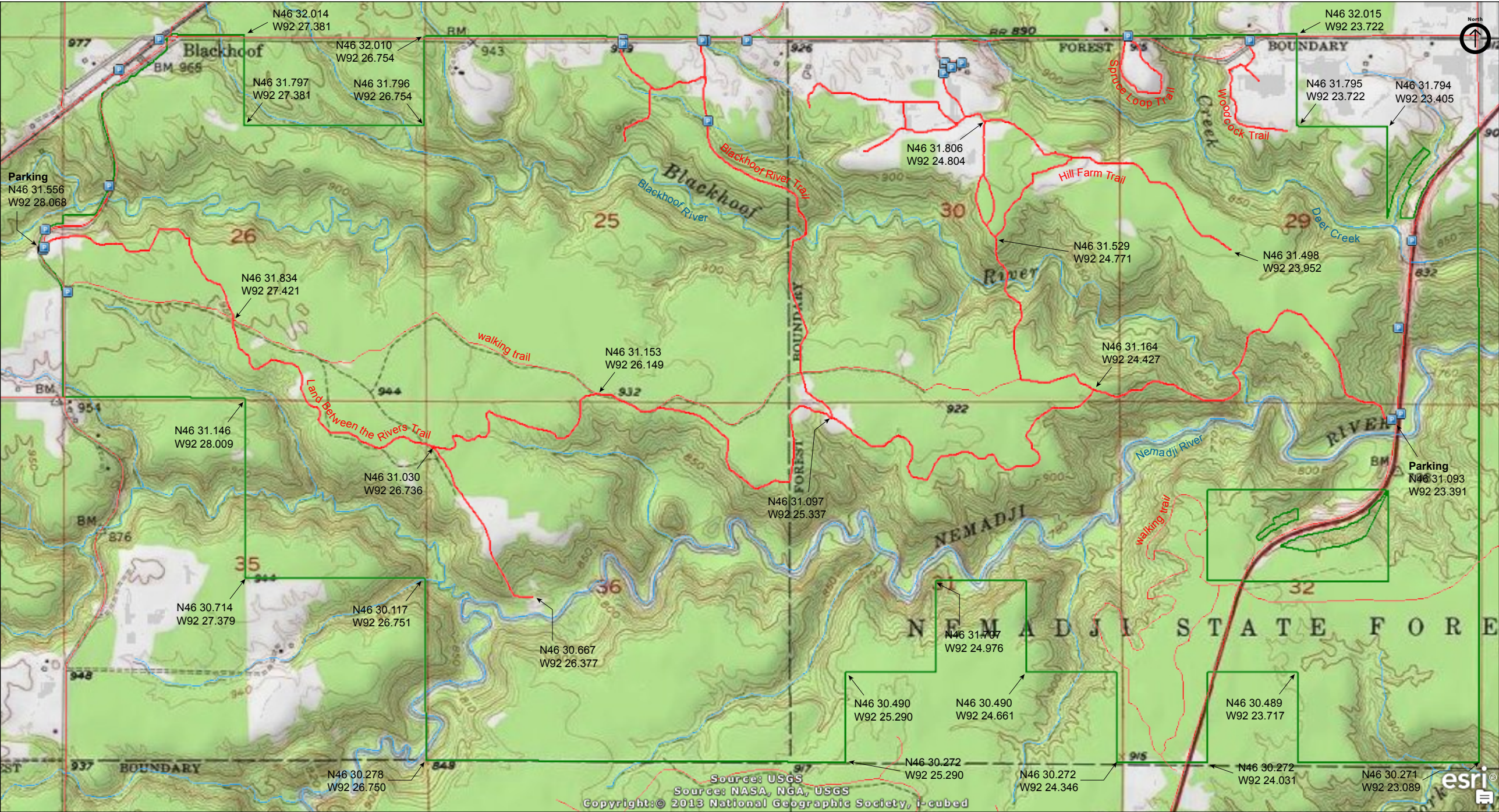
Blackhoof River WMA

Carlton County



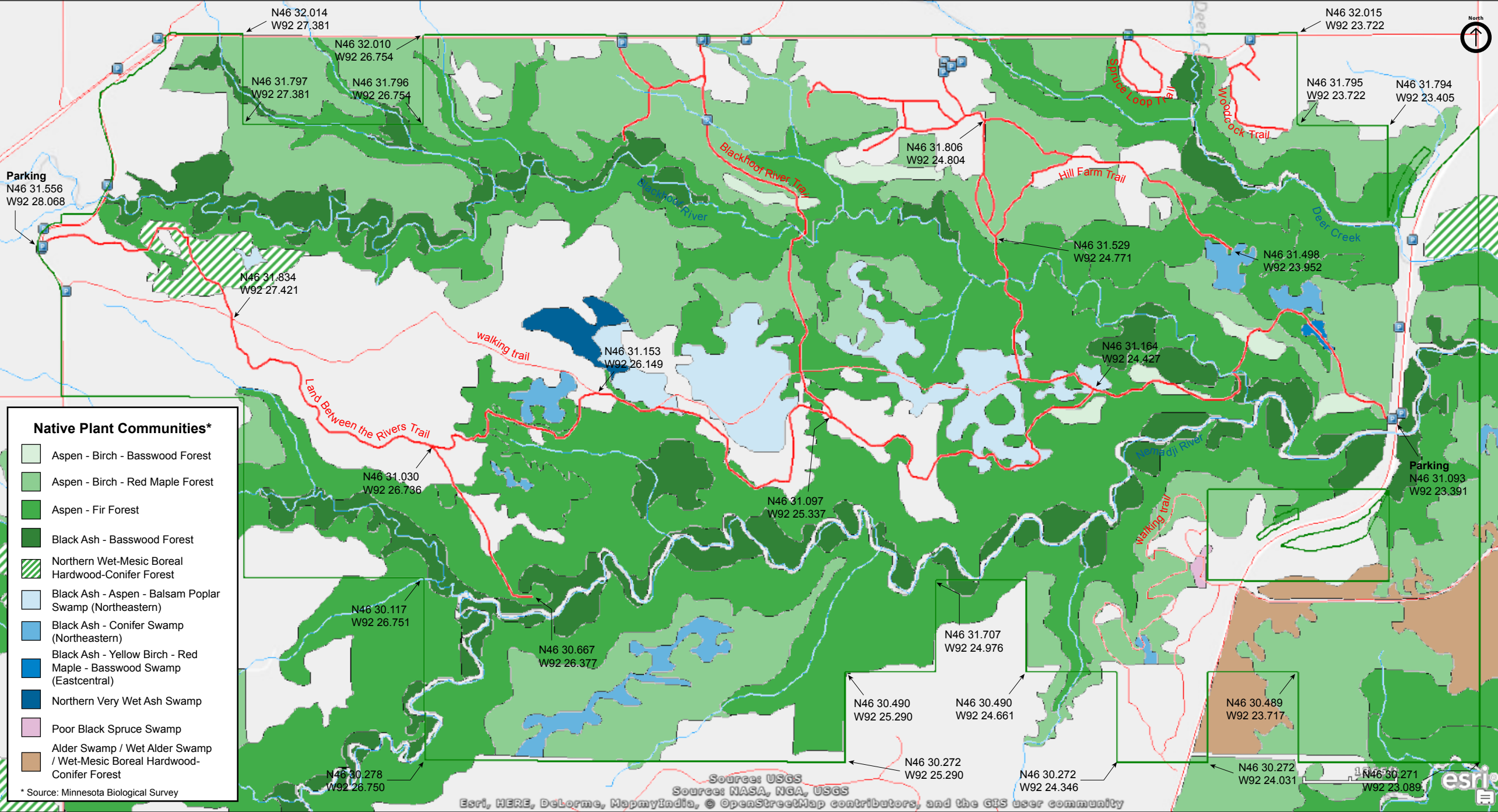
Blackhoof River WMA

Carlton County



Blackhoof River WMA

Carlton County



Blackhoof River WMA

Directions and Notes from Minnesota DNR

From Wrenshall, go 5.5 miles S on CSAH 1, then 1 mile S on MN 23

Notes from MinnesotaSeasons.com

Parking

Land Between the Rivers Trailhead

N46 31.556, W92 28.068

Land Between the Rivers Trail, east end (MN 23)

N46 31.093, W92 23.391

Hiking Trails

There are 18.6 miles of hunter walking trails. These are as wide as a forest road and are mowed every year. There are 5.3 miles of other walking trails that are also maintained. A DNR access road parallels MN 23 for 2 miles at the east end of the WMA.

DISCLAIMER OF WARRANTIES AND LIMITATIONS OF LIABILITY

MinnesotaSeasons.com, The Nature Conservancy, U.S. Department of Agriculture, Forest Service, U.S. Fish and Wildlife Service, the state of Minnesota, the Minnesota Department of Natural Resources, and their employees, make no representations or warranties, express or implied, with respect to the use of or reliance on the data provided herewith, regardless of its format or means of transmission. There are no guarantees or representations to the user as to the accuracy, currency, completeness, suitability or reliability of this data for any purpose. THE USER ACCEPTS THE DATA AND/OR SOFTWARE "AS IS" AND ASSUMES ALL RISKS ASSOCIATED WITH ITS USE.

IN NO EVENT SHALL MINNESOTASEASONS.COM, TNC, USDA-FS, USFWS, OR MNDNR BE LIABLE FOR ANY DIRECT, INDIRECT, INCIDENTAL, SPECIAL, EXEMPLARY, OR CONSEQUENTIAL DAMAGES (INCLUDING, BUT NOT LIMITED TO, PROCUREMENT OF SUBSTITUTE GOODS OR SERVICES; LOSS OF USE, DATA, OR PROFITS; OR BUSINESS INTERRUPTION) HOWEVER CAUSED AND ON ANY THEORY OF LIABILITY, WHETHER IN CONTRACT, STRICT LIABILITY, OR TORT (INCLUDING NEGLIGENCE OR OTHERS) ARISING IN ANY WAY OUT OF THE USE OF THIS DATA, EVEN IF ADVISED OF THE POSSIBILITY OF SUCH DAMAGE OR FOR ANY CLAIM BY ANY OTHER PARTY.

Your use of the data is acceptance on your part of the terms and conditions set forth herein.