

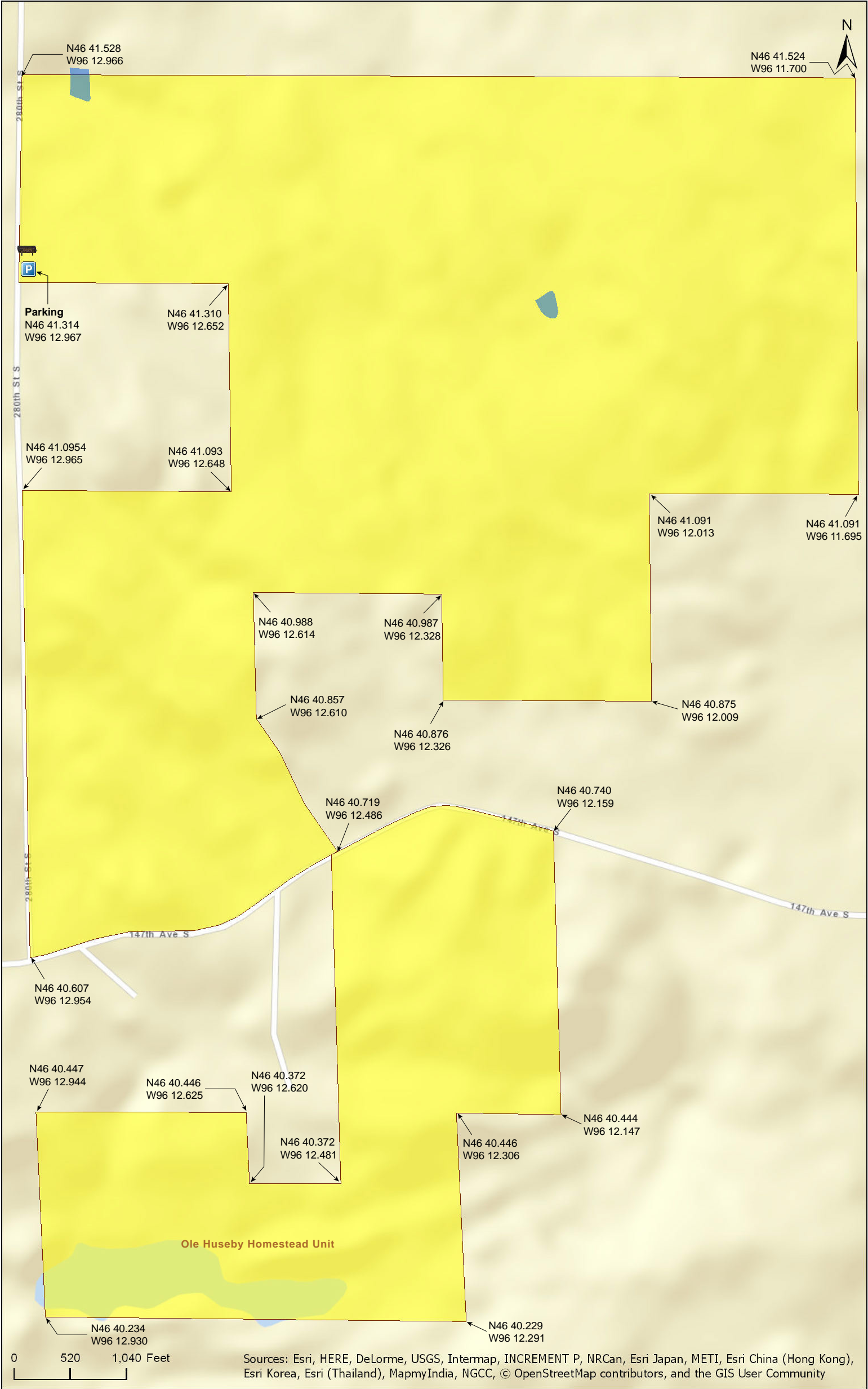
Blanket Flower Prairie SNA

Clay County



Blanket Flower Prairie SNA

Clay County



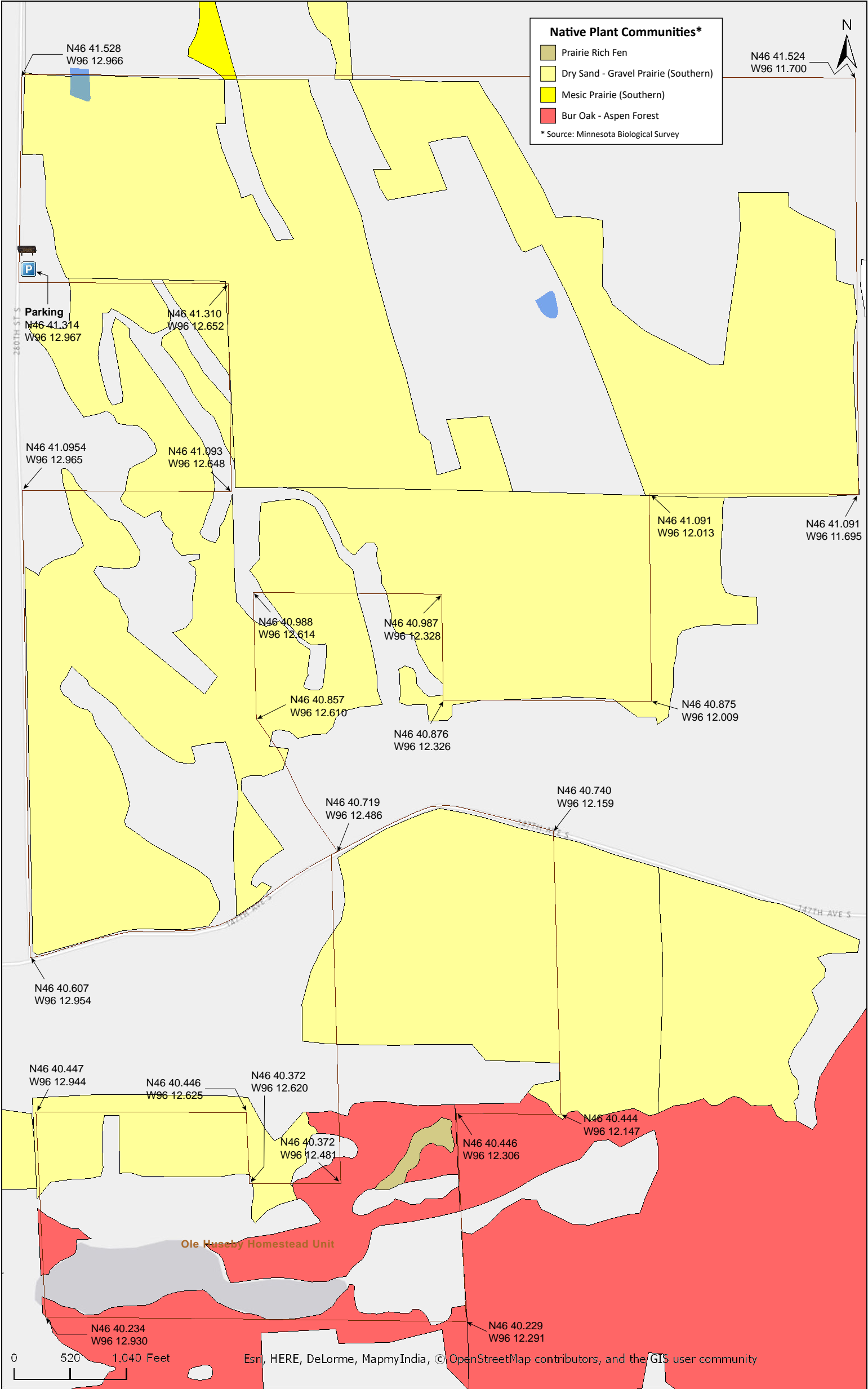
Blanket Flower Prairie SNA

Clay County



Blanket Flower Prairie SNA

Clay County





Blanket Flower Prairie SNA

Directions and Notes from Minnesota DNR

Directions: From Barnesville 8 miles E on MN Hwy 34, then 1 mile N on MN Hwy 32, then 1 mile E on 147th Ave, then 0.75 mile N on 280th St. Park in lot on E.

Lat/Lon: 46.688619, -96.215937

The research and educational purposes of SNAs are well represented by the Minnesota Dragonfly Society, which has used this site to engage citizen scientists in surveys of Minnesota's dragonfly and damselfly populations; and also by the students from the Natural Resources Management Club at North Dakota State University, who volunteer their time as site stewards. Ongoing management focuses on reconstruction of old fields to prairie vegetation with native seed collected from within the site.

A portion of this site is designated as the Ole Huseby Homestead Unit.

This site has no maintained trails or other recreational facilities.

Notes from MinnesotaSeasons.com

Parking

N46 41.317, W96 12.956

DISCLAIMER OF WARRANTIES AND LIMITATIONS OF LIABILITY

MinnesotaSeasons.com, The Nature Conservancy, U.S. Department of Agriculture, Forest Service, U.S. Fish and Wildlife Service, the state of Minnesota, the Minnesota Department of Natural Resources, and their employees, make no representations or warranties, express or implied, with respect to the use of or reliance on the data provided herewith, regardless of its format or means of transmission. There are no guarantees or representations to the user as to the accuracy, currency, completeness, suitability or reliability of this data for any purpose. THE USER ACCEPTS THE DATA AND/OR SOFTWARE "AS IS" AND ASSUMES ALL RISKS ASSOCIATED WITH ITS USE.

IN NO EVENT SHALL MINNESOTASEASONS.COM, TNC, USDA-FS, USFWS, OR MNDNR BE LIABLE FOR ANY DIRECT, INDIRECT, INCIDENTAL, SPECIAL, EXEMPLARY, OR CONSEQUENTIAL DAMAGES (INCLUDING, BUT NOT LIMITED TO, PROCUREMENT OF SUBSTITUTE GOODS OR SERVICES; LOSS OF USE, DATA, OR PROFITS; OR BUSINESS INTERRUPTION) HOWEVER CAUSED AND ON ANY THEORY OF LIABILITY, WHETHER IN CONTRACT, STRICT LIABILITY, OR TORT (INCLUDING NEGLIGENCE OR OTHERS) ARISING IN ANY WAY OUT OF THE USE OF THIS DATA, EVEN IF ADVISED OF THE POSSIBILITY OF SUCH DAMAGE OR FOR ANY CLAIM BY ANY OTHER PARTY.

Your use of the data is acceptance on your part of the terms and conditions set forth herein.