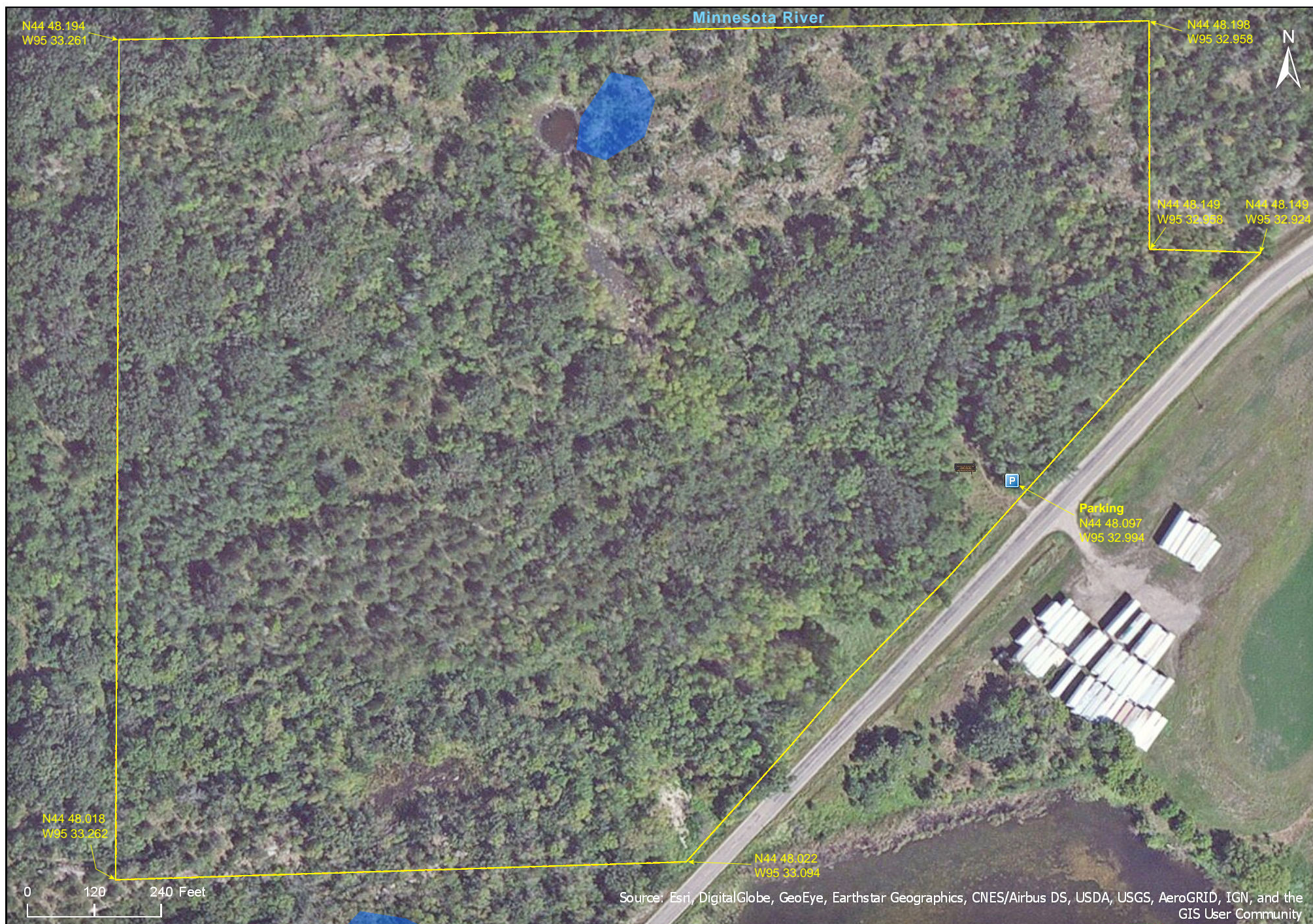


# Blue Devil Valley SNA

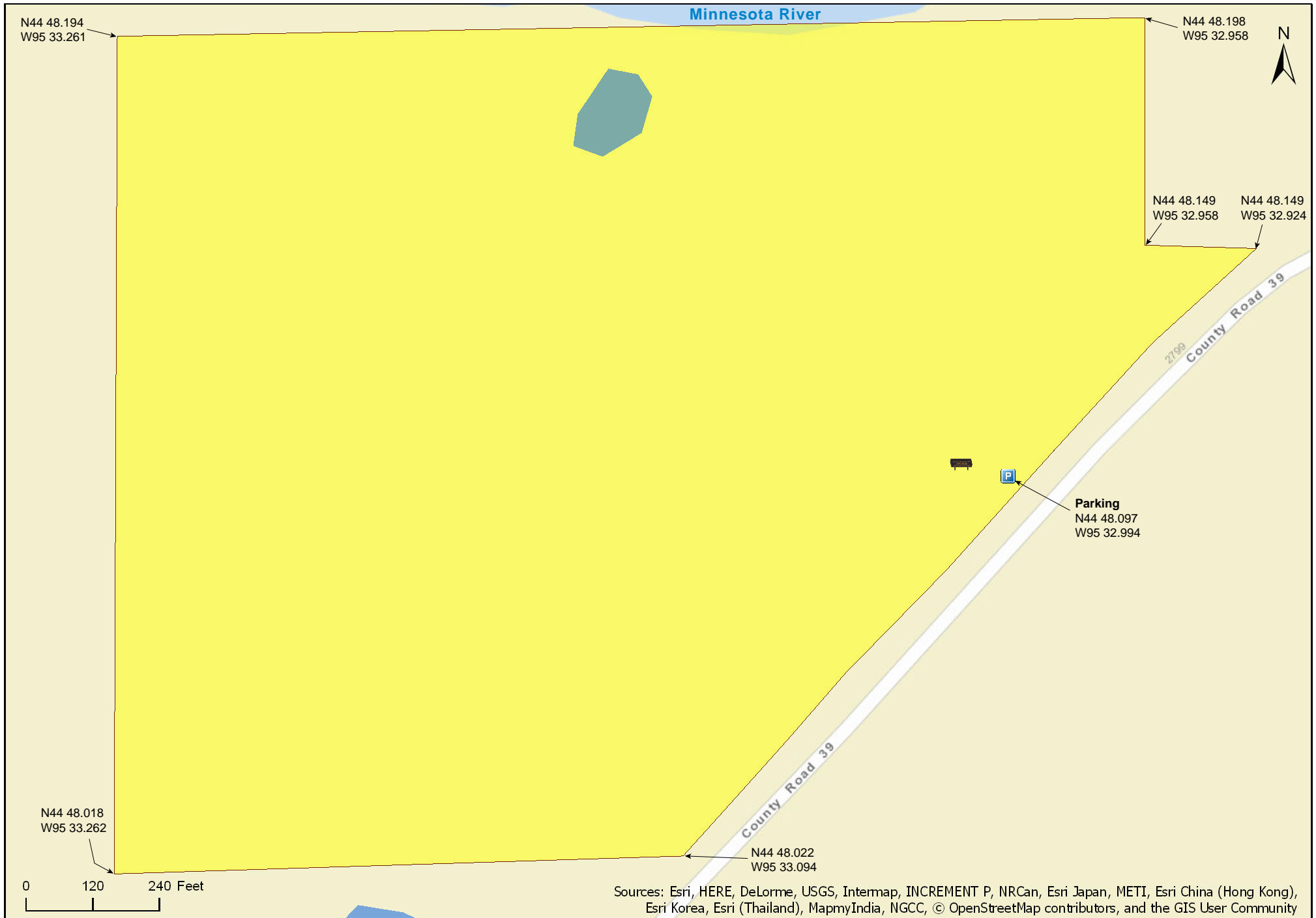
Yellow Medicine County





# Blue Devil Valley SNA

Yellow Medicine County



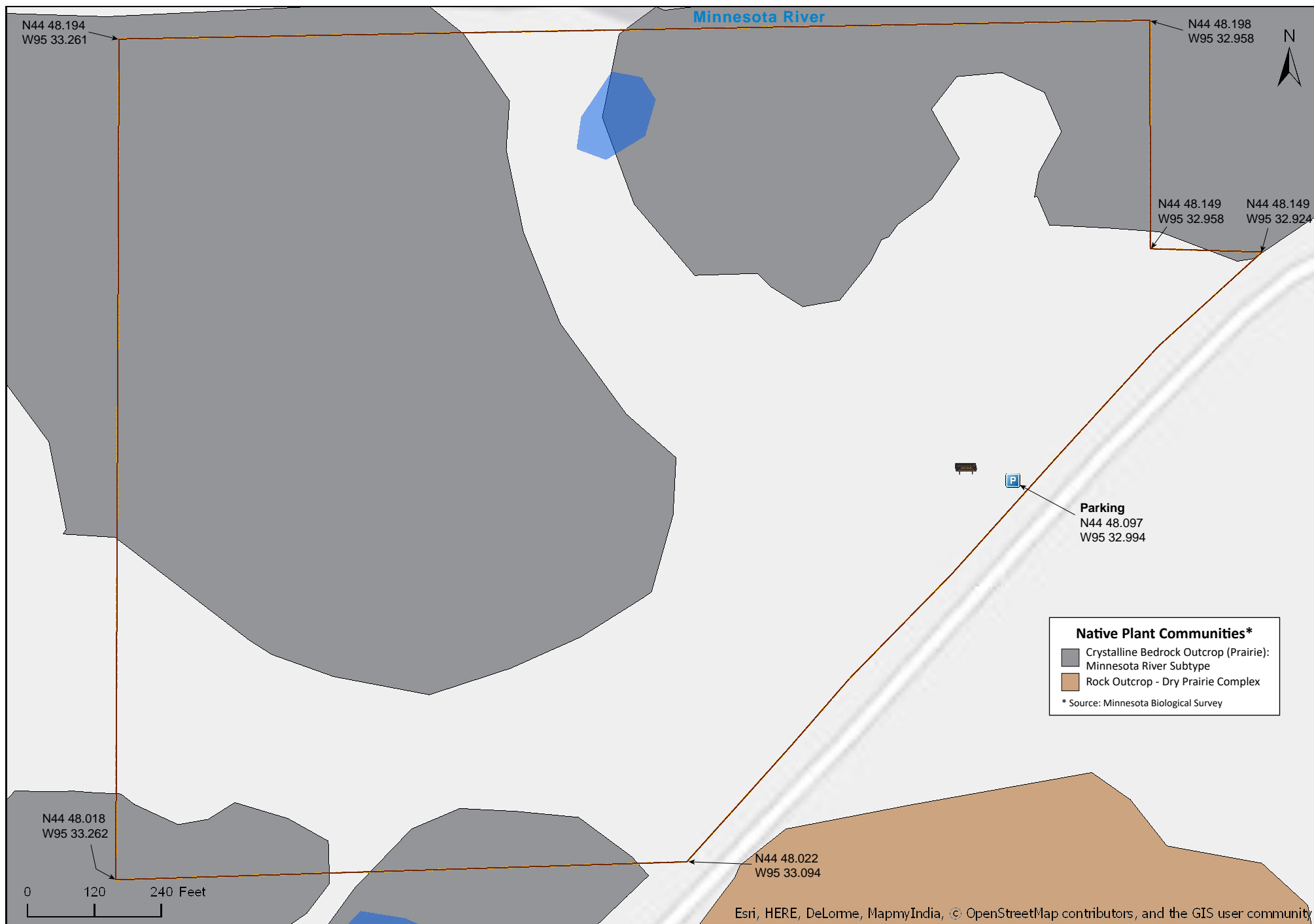
# Blue Devil Valley SNA

Yellow Medicine County



# Blue Devil Valley SNA

Yellow Medicine County









# Blue Devil Valley SNA

## **Directions and Notes from Minnesota DNR**

**Directions:** From Granite Falls, 0.2 mile S on MN Hwy 23, then 0.15 mile W on Co Hwy 39 (540th St). Park in pull-off on N near wood-routed sign.

**Lat/Lon:** 44.801665, -95.549962

This site has no maintained trails or other recreational facilities. This site is in an Audubon Important Bird Area.

Rock climbing for sport, including bouldering, is not allowed on Scientific and Natural Areas. *Bouldering promoted at Blue Devil Valley and Swedes Forest Scientific and Natural Areas on various websites and guidebooks is in violation of state law, please do not boulder at these sites.*

## **Notes from MinnesotaSeasons.com**

### **Parking**

N44 48.097, W95 32.994

## **DISCLAIMER OF WARRANTIES AND LIMITATIONS OF LIABILITY**

MinnesotaSeasons.com, The Nature Conservancy, U.S. Department of Agriculture, Forest Service, U.S. Fish and Wildlife Service, the state of Minnesota, the Minnesota Department of Natural Resources, and their employees, make no representations or warranties, express or implied, with respect to the use of or reliance on the data provided herewith, regardless of its format or means of transmission. There are no guarantees or representations to the user as to the accuracy, currency, completeness, suitability or reliability of this data for any purpose. THE USER ACCEPTS THE DATA AND/OR SOFTWARE "AS IS" AND ASSUMES ALL RISKS ASSOCIATED WITH ITS USE.

IN NO EVENT SHALL MINNESOTASEASONS.COM, TNC, USDA-FS, USFWS, OR MNDNR BE LIABLE FOR ANY DIRECT, INDIRECT, INCIDENTAL, SPECIAL, EXEMPLARY, OR CONSEQUENTIAL DAMAGES (INCLUDING, BUT NOT LIMITED TO, PROCUREMENT OF SUBSTITUTE GOODS OR SERVICES; LOSS OF USE, DATA, OR PROFITS; OR BUSINESS INTERRUPTION) HOWEVER CAUSED AND ON ANY THEORY OF LIABILITY, WHETHER IN CONTRACT, STRICT LIABILITY, OR TORT (INCLUDING NEGLIGENCE OR OTHERS) ARISING IN ANY WAY OUT OF THE USE OF THIS DATA, EVEN IF ADVISED OF THE POSSIBILITY OF SUCH DAMAGE OR FOR ANY CLAIM BY ANY OTHER PARTY.

Your use of the data is acceptance on your part of the terms and conditions set forth herein.