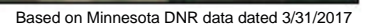


Anoka County

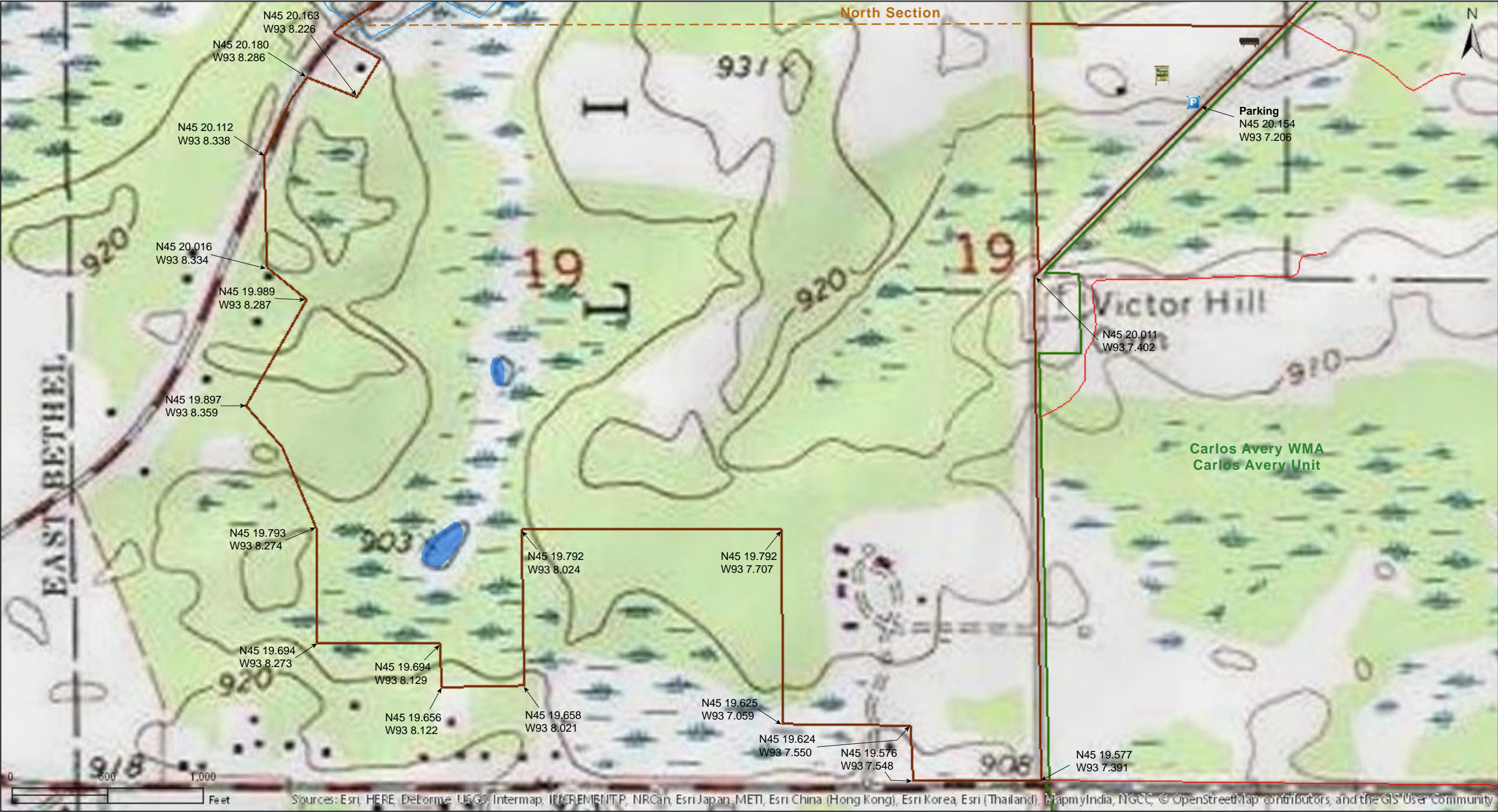


Anoka County



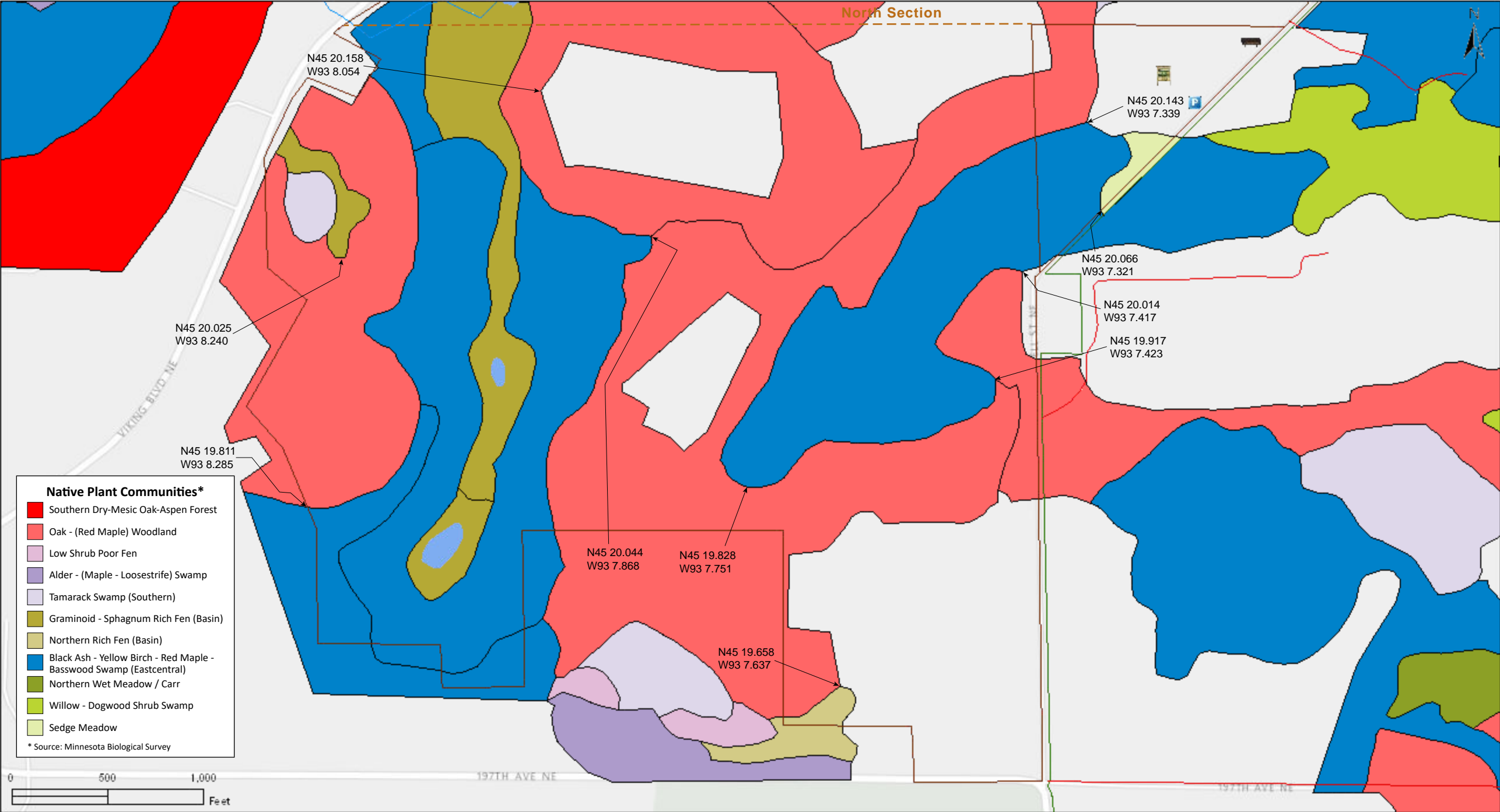
Boot Lake SNA
South Section

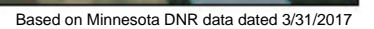
Anoka County



Boot Lake SNA
South Section

Anoka County





Boot Lake SNA

South Section

Notes from Minnesota DNR

Directions: From MN Hwy 65 in Bethel 6.5 miles E and N on Co Hwy 22, then 1.2 miles E on Co Rd 17 and N on Jodrell Rd. Park on in pull-off on W.

Lat/Lon: 45.335899, -93.120126

This site has no maintained trails or other recreational facilities. The Carlos Avery Wildlife Managment Area and Martin-Island-Lynwood Lakes Regional Park are adjacent to this site.

Deer exclosures seen on the site are associated with a long-term research project on the effect of deer in forest succession.

Notes from MinnesotaSeasons.com

Parking

N45 20.154, W93 7.206

DISCLAIMER OF WARRANTIES AND LIMITATIONS OF LIABILITY

MinnesotaSeasons.com, The Nature Conservancy, U.S. Department of Agriculture, Forest Service, U.S. Fish and Wildlife Service, the state of Minnesota, the Minnesota Department of Natural Resources, and their employees, make no representations or warranties, express or implied, with respect to the use of or reliance on the data provided herewith, regardless of its format or means of transmission. There are no guarantees or representations to the user as to the accuracy, currency, completeness, suitability or reliability of this data for any purpose. THE USER ACCEPTS THE DATA AND/OR SOFTWARE "AS IS" AND ASSUMES ALL RISKS ASSOCIATED WITH ITS USE.

IN NO EVENT SHALL MINNESOTASEASONS.COM, TNC, USDA-FS, USFWS, OR MNDNR BE LIABLE FOR ANY DIRECT, INDIRECT, INCIDENTAL, SPECIAL, EXEMPLARY, OR CONSEQUENTIAL DAMAGES (INCLUDING, BUT NOT LIMITED TO, PROCUREMENT OF SUBSTITUTE GOODS OR SERVICES; LOSS OF USE, DATA, OR PROFITS; OR BUSINESS INTERRUPTION) HOWEVER CAUSED AND ON ANY THEORY OF LIABILITY, WHETHER IN CONTRACT, STRICT LIABILITY, OR TORT (INCLUDING NEGLIGENCE OR OTHERS) ARISING IN ANY WAY OUT OF THE USE OF THIS DATA, EVEN IF ADVISED OF THE POSSIBILITY OF SUCH DAMAGE OR FOR ANY CLAIM BY ANY OTHER PARTY.

Your use of the data is acceptance on your part of the terms and conditions set forth herein.