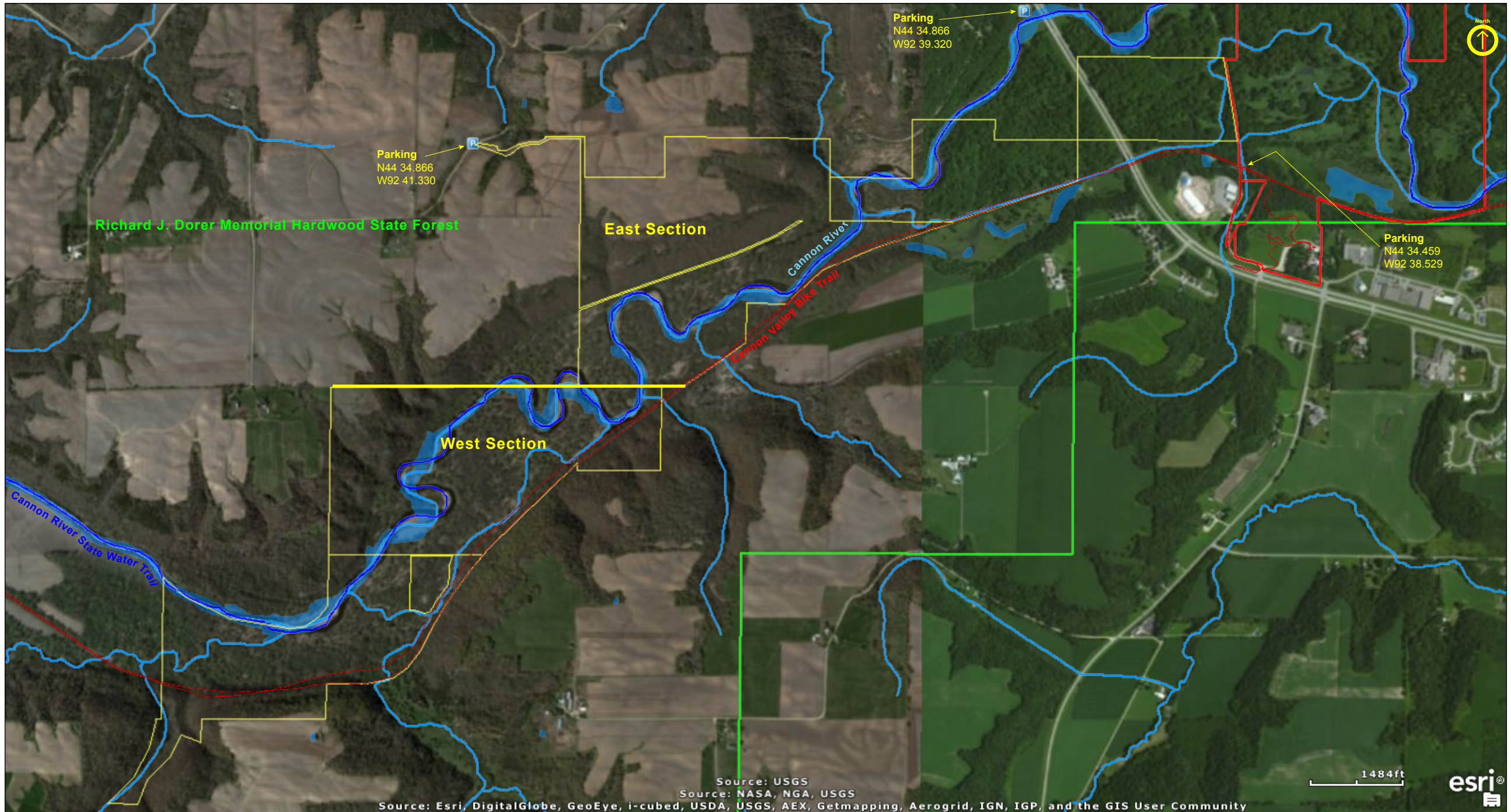


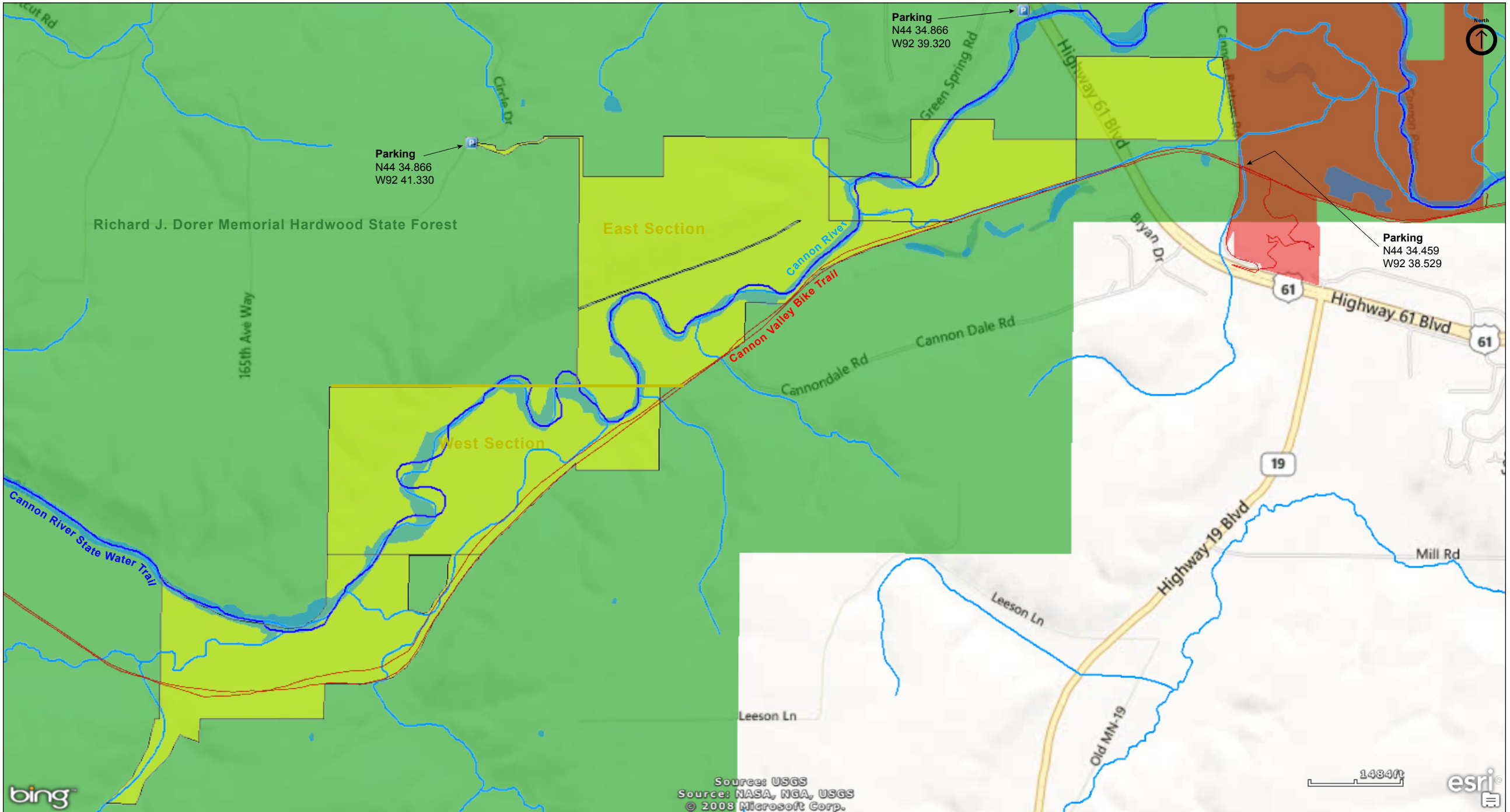
Cannon River Turtle Preserve SNA

Goodhue County



Cannon River Turtle Preserve SNA

Goodhue County



Cannon River Turtle Preserve SNA

Directions from Minnesota DNR

- 1) From downtown Red Wing 5 miles W on US Hwy 61. Park in water access N of Cannon River. Hike back across bridge 0.5 mile to site on both sides of 61.
- 2) From downtown Red Wing 8 miles W on US Hwy 61, then 0.75 mile SW on Co Rd 18 (Welch Shortcut), then 0.6 mile S on Circle Dr. Park on pull-off on NW. Hike corridor (SE of road) 0.45 mile to site.

Sand bars are closed May 1 through October 15 to protect rare turtles during nesting season.

The Cannon Valley Trail and Cannon River Water Trail pass through this site.

Notes from MinnesotaSeasons.com

Parking

Cannon Valley Bike Trail parking lot
(access to area south of Cannon River)
N44 34.459, W92 38.529

Circle Drive pull off
(access to area north of Cannon River)
N44 34.522, W92 41.330

Cannon River Public Water Access
(access to area south of Cannon River)
N44 34.866, W92 39.320

The Cannon River Bike Trail runs alongside this SNA. There are no other hiking trails.

This SNA is within the Richard J. Dorer Memorial Hardwood State Forest.

Mosquitoes can be thick in the summer.

DISCLAIMER OF WARRANTIES AND LIMITATIONS OF LIABILITY

MinnesotaSeasons.com, The Nature Conservancy, U.S. Department of Agriculture, Forest Service, U.S. Fish and Wildlife Service, the state of Minnesota, the Minnesota Department of Natural Resources, and their employees, make no representations or warranties, express or implied, with respect to the use of or reliance on the data provided herewith, regardless of its format or means of transmission. There are no guarantees or representations to the user as to the accuracy, currency, completeness, suitability or reliability of this data for any purpose. THE USER ACCEPTS THE DATA AND/OR SOFTWARE "AS IS" AND ASSUMES ALL RISKS ASSOCIATED WITH ITS USE.

IN NO EVENT SHALL MINNESOTASEASONS.COM, TNC, USDA-FS, USFWS, OR MNDNR BE LIABLE FOR ANY DIRECT, INDIRECT, INCIDENTAL, SPECIAL, EXEMPLARY, OR CONSEQUENTIAL DAMAGES (INCLUDING, BUT NOT LIMITED TO, PROCUREMENT OF SUBSTITUTE GOODS OR SERVICES; LOSS OF USE, DATA, OR PROFITS; OR BUSINESS INTERRUPTION) HOWEVER CAUSED AND ON ANY THEORY OF LIABILITY, WHETHER IN CONTRACT, STRICT LIABILITY, OR TORT (INCLUDING NEGLIGENCE OR OTHERS) ARISING IN ANY WAY OUT OF THE USE OF THIS DATA, EVEN IF ADVISED OF THE POSSIBILITY OF SUCH DAMAGE OR FOR ANY CLAIM BY ANY OTHER PARTY.

Your use of the data is acceptance on your part of the terms and conditions set forth herein.