

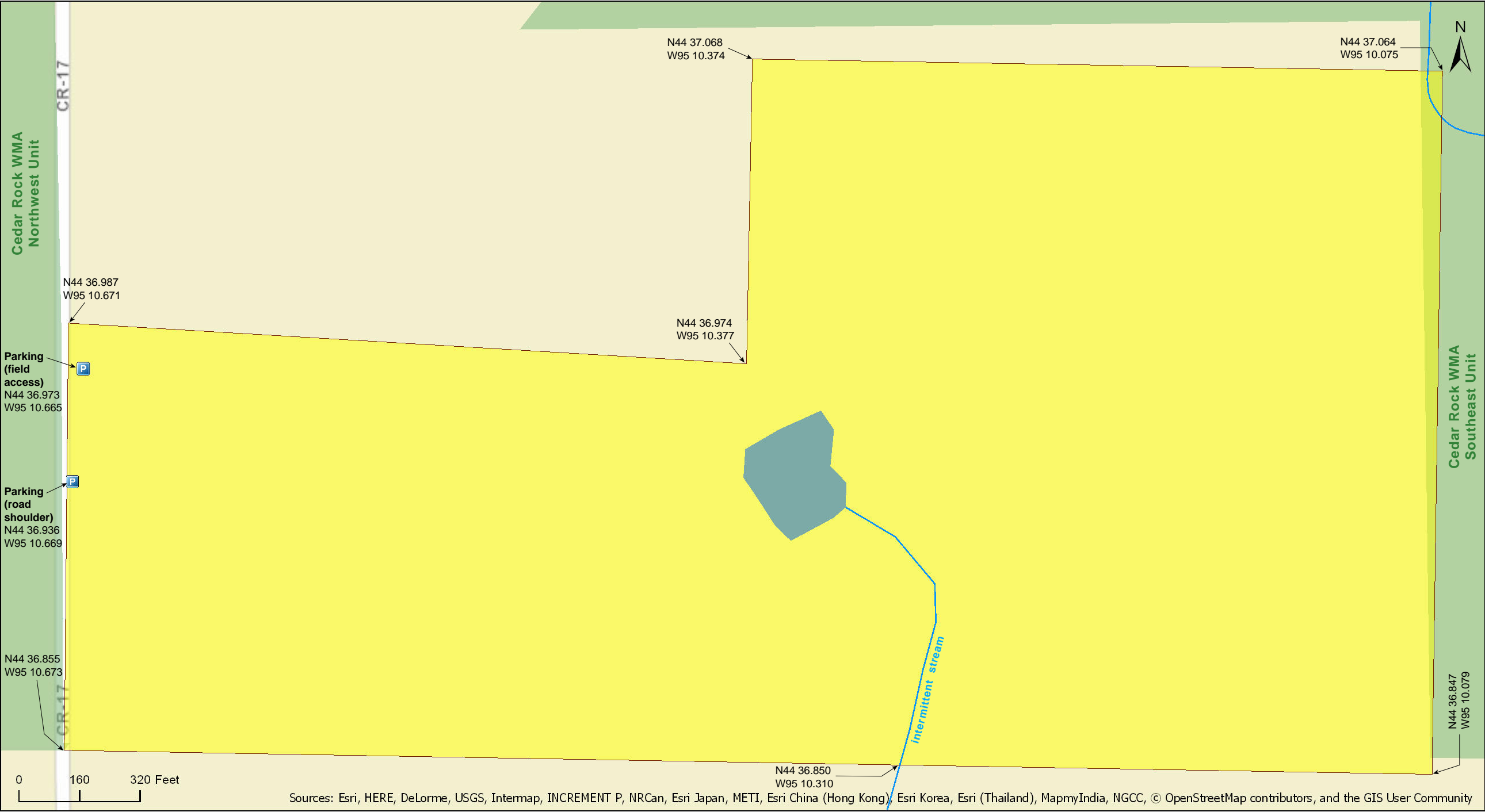
Cedar Rock SNA

Redwood County



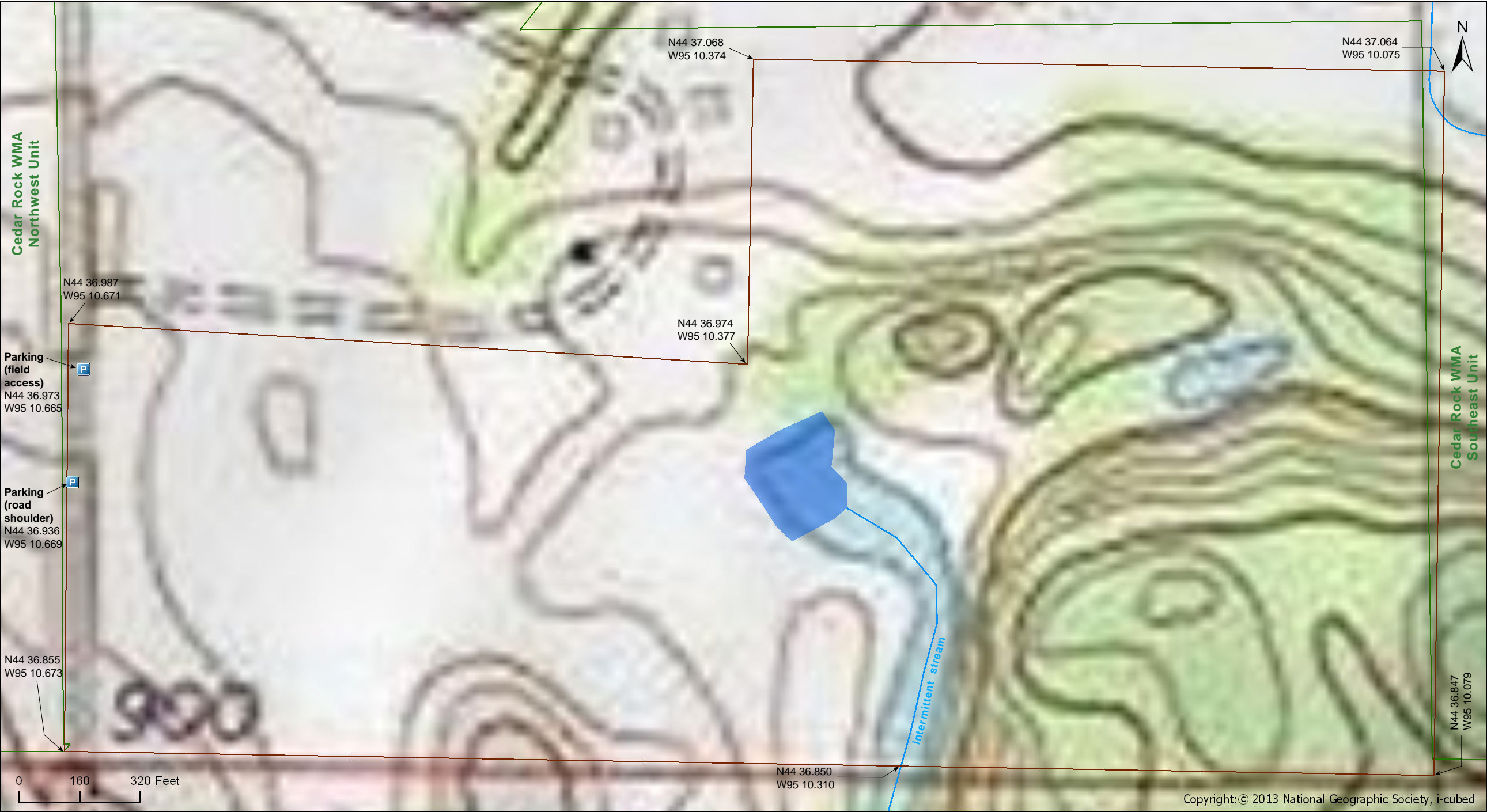
Cedar Rock SNA

Redwood County



Cedar Rock SNA

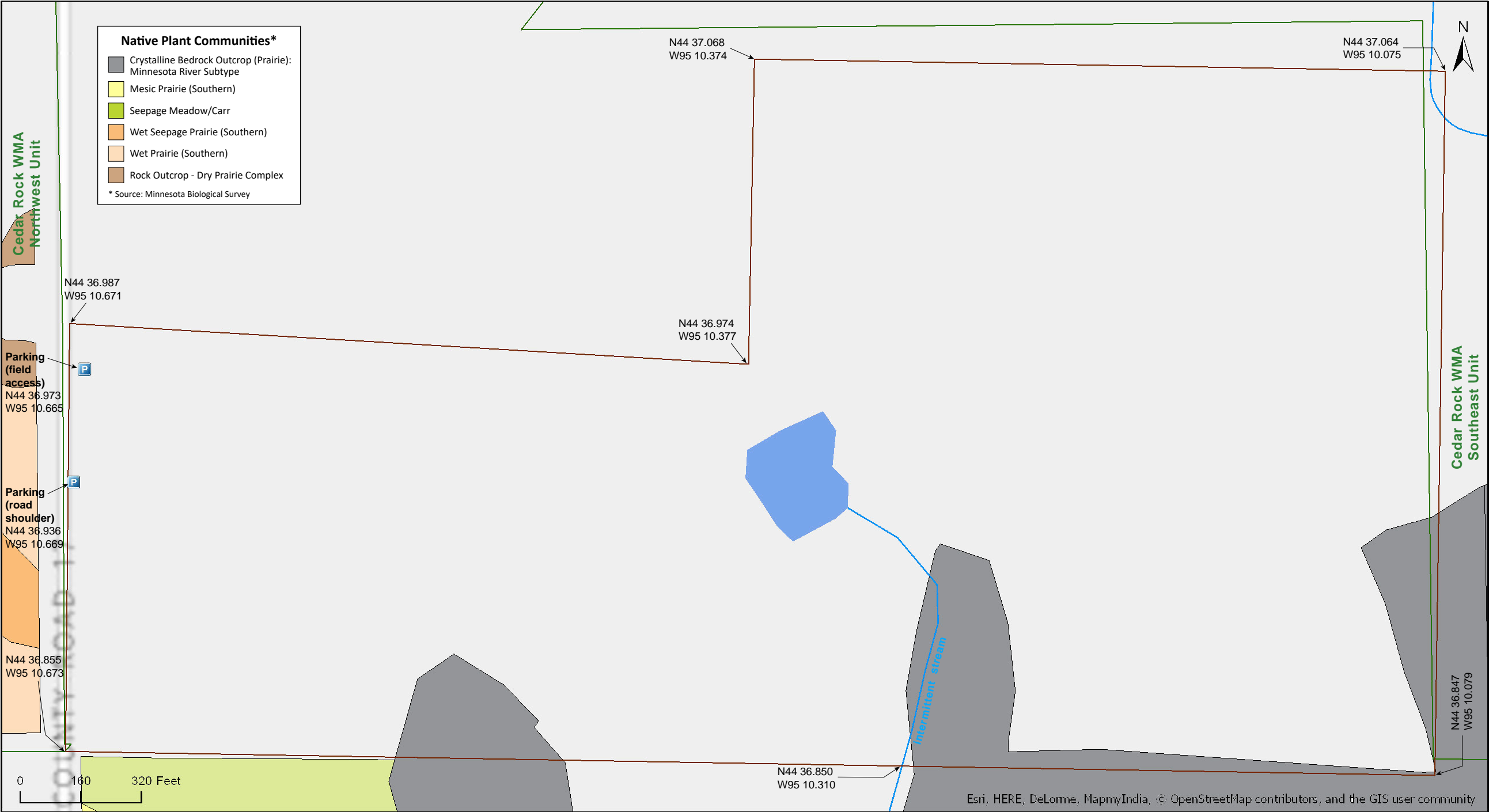
Redwood County

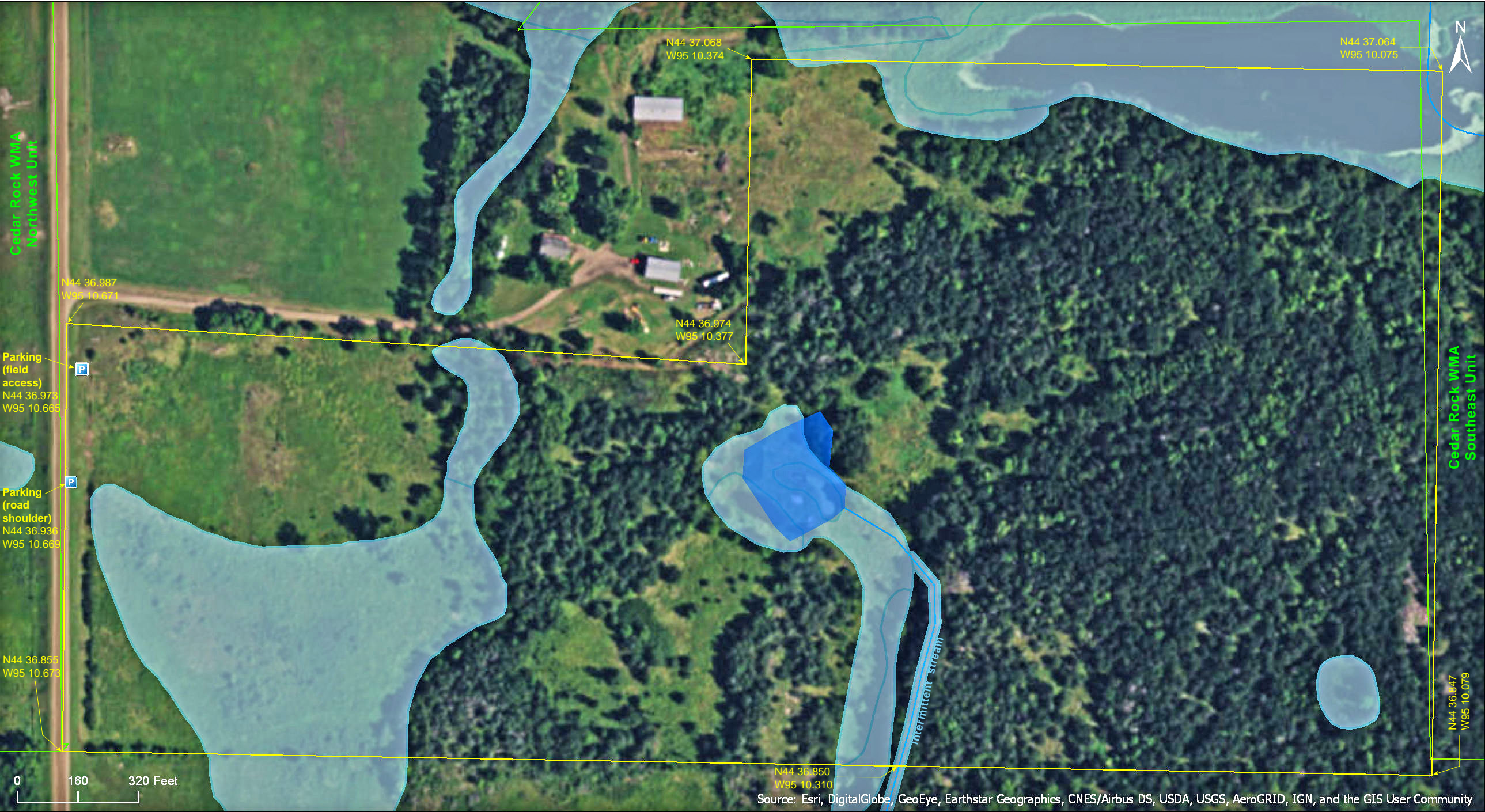


Copyright: © 2013 National Geographic Society, i-cubed

Cedar Rock SNA

Redwood County





Cedar Rock SNA

Directions and Notes from Minnesota DNR

Directions: From Redwood Falls 1.5 miles W on MN 19, then 6.5 mile N on Co Hwy 17. Park on E road shoulder.

Lat/Lon: 44.615594, -95.177822

This site has no maintained trails or other recreational facilities. This site is in an Audubon Important Bird Area. Cedar Rock WMA is adjacent to this site.

Rock climbing for sport, including bouldering, is not allowed on Scientific and Natural Areas.

Notes from MinnesotaSeasons.com

Parking

N44 36.973, W95 10.665

There is a wide field access at the northwest corner of the SNA large enough to accommodate at least two vehicles. A fence completely surrounds the site. The only break in the fence is at the southwest corner of the SNA.

Trails

A cleared path, possibly a former utility road, begins at the north side of the shallow lake. It leads north through the dense redcedar forest to the clearing at the north boundary of the SNA. It continues east, paralleling the south shore of the much larger lake. It ends at a well-worn footpath that continues 60 yards to the east boundary of the SNA. In the summer it is overgrown with grasses and forbs. The only evidence of it is a conspicuous lack of trees and shrubs.

DISCLAIMER OF WARRANTIES AND LIMITATIONS OF LIABILITY

MinnesotaSeasons.com, The Nature Conservancy, U.S. Department of Agriculture, Forest Service, U.S. Fish and Wildlife Service, the state of Minnesota, the Minnesota Department of Natural Resources, and their employees, make no representations or warranties, express or implied, with respect to the use of or reliance on the data provided herewith, regardless of its format or means of transmission. There are no guarantees or representations to the user as to the accuracy, currency, completeness, suitability or reliability of this data for any purpose. THE USER ACCEPTS THE DATA AND/OR SOFTWARE "AS IS" AND ASSUMES ALL RISKS ASSOCIATED WITH ITS USE.

IN NO EVENT SHALL MINNESOTASEASONS.COM, TNC, USDA-FS, USFWS, OR MNDNR BE LIABLE FOR ANY DIRECT, INDIRECT, INCIDENTAL, SPECIAL, EXEMPLARY, OR CONSEQUENTIAL DAMAGES (INCLUDING, BUT NOT LIMITED TO, PROCUREMENT OF SUBSTITUTE GOODS OR SERVICES; LOSS OF USE, DATA, OR PROFITS; OR BUSINESS INTERRUPTION) HOWEVER CAUSED AND ON ANY THEORY OF LIABILITY, WHETHER IN CONTRACT, STRICT LIABILITY, OR TORT (INCLUDING NEGLIGENCE OR OTHERS) ARISING IN ANY WAY OUT OF THE USE OF THIS DATA, EVEN IF ADVISED OF THE POSSIBILITY OF SUCH DAMAGE OR FOR ANY CLAIM BY ANY OTHER PARTY.

Your use of the data is acceptance on your part of the terms and conditions set forth herein.