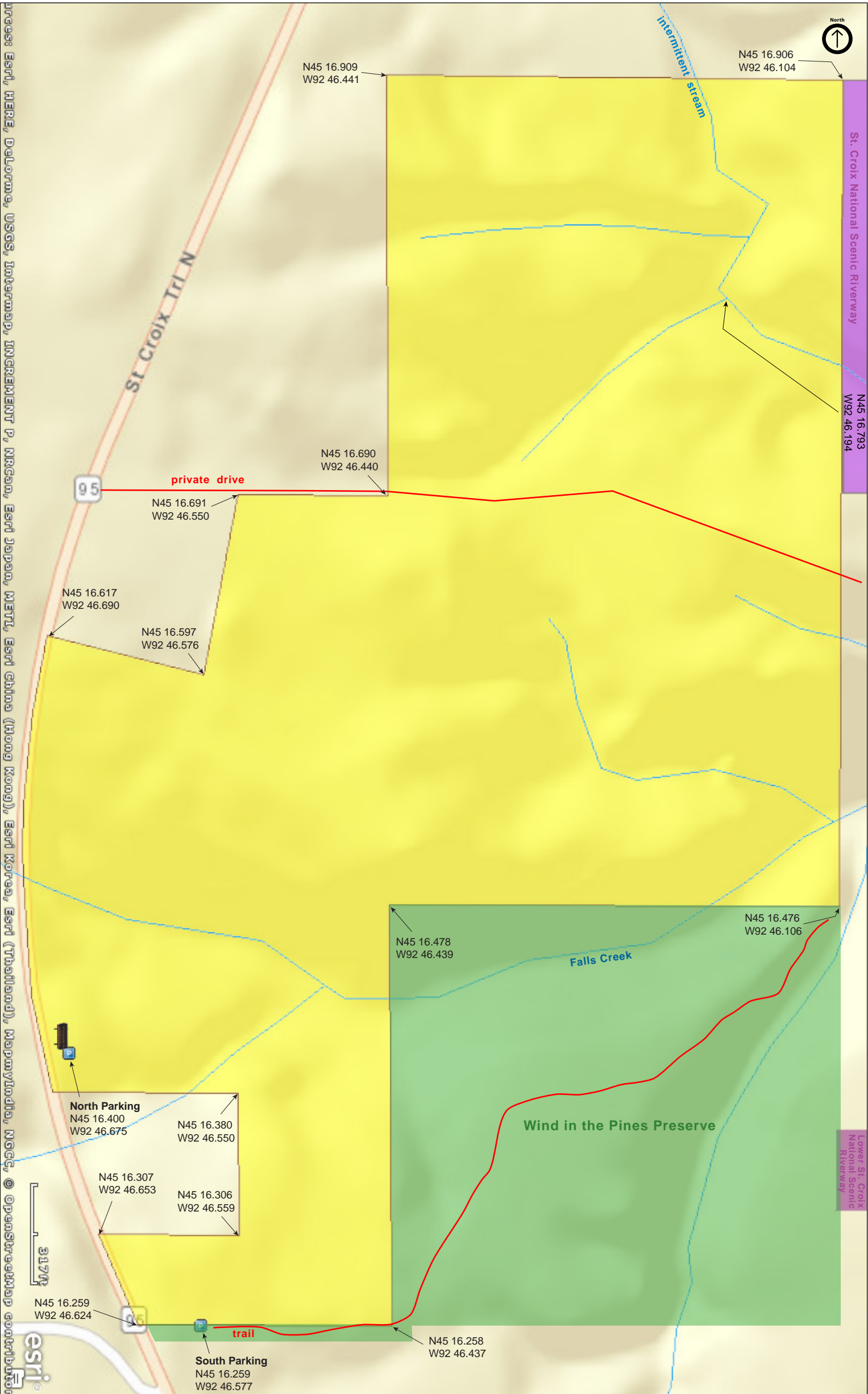






Falls Creek SNA

Washington County

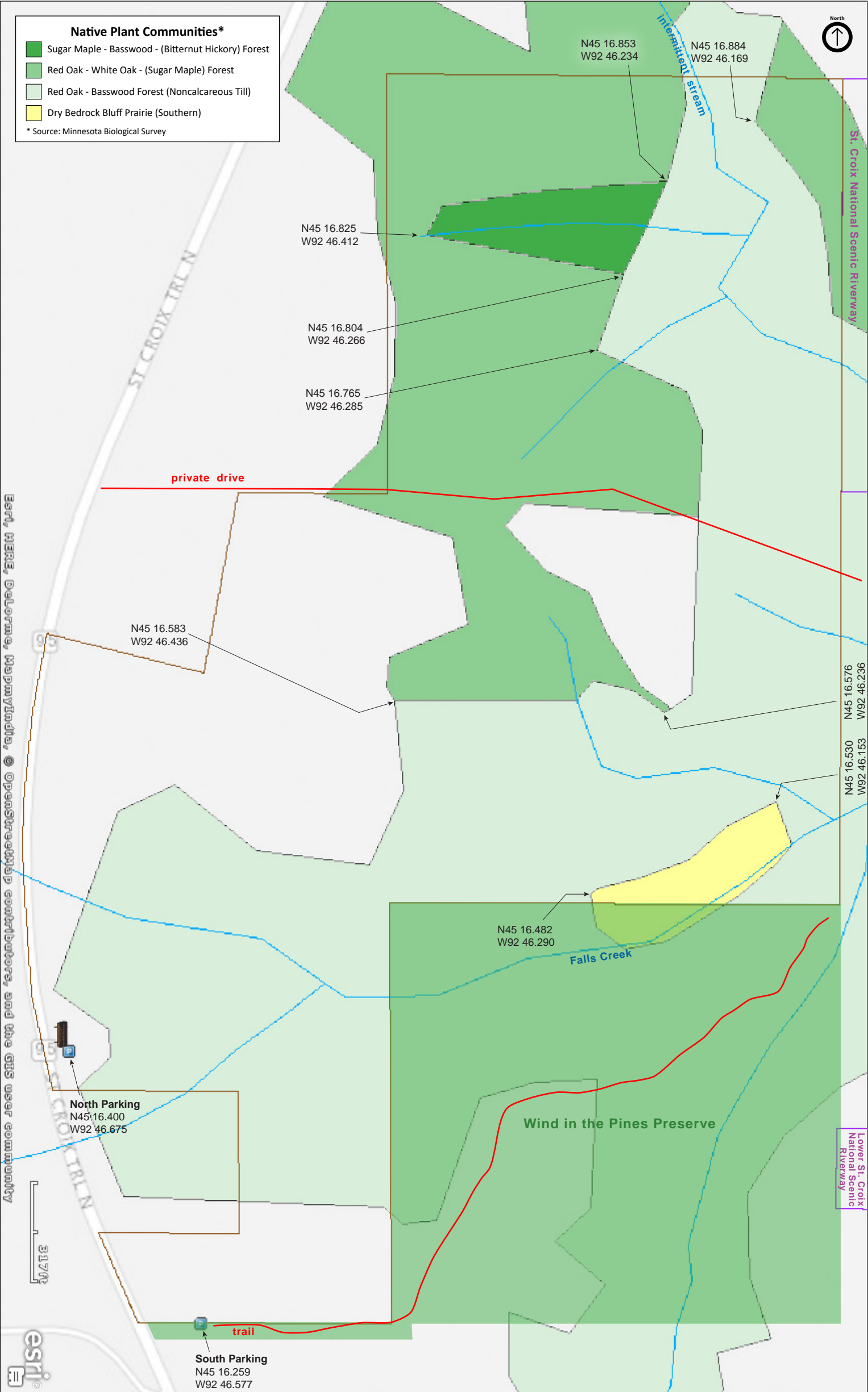






Falls Creek SNA

Washington County









# Falls Creek SNA

## Notes from Minnesota DNR

**Directions:** From Copas 2.75 miles N on MN Hwy 95. Park in Wind-in-the-Pines Township lot on E near wood-routed sign.

**Lat/Lon:** 45.270982, -92.776293

**Directions:** From Copas 3 miles N on MN Hwy 95. Park in lot on E near wood-routed sign.

**Lat/Lon:** 45.273334, -92.777916

This site has no maintained trails or other recreational facilities. This site is in an Audubon Important Bird Area.

The old fields on the site are undergoing reforestation with seedlings grown from acorns and seeds collected on the site. A deer exclosure protects the seedlings on one old field.

## Notes from MinnesotaSeasons.com

### **North Parking**

N45 16.400, W92 46.675

### **South Parking**

N45 16.258, W92 46.577

The wood-routed sign at this SNA is almost impossible to see when passing on busy Minnesota Highway 95 at 55 miles per hour.

## DISCLAIMER OF WARRANTIES AND LIMITATIONS OF LIABILITY

MinnesotaSeasons.com, The Nature Conservancy, U.S. Department of Agriculture, Forest Service, U.S. Fish and Wildlife Service, the state of Minnesota, the Minnesota Department of Natural Resources, and their employees, make no representations or warranties, express or implied, with respect to the use of or reliance on the data provided herewith, regardless of its format or means of transmission. There are no guarantees or representations to the user as to the accuracy, currency, completeness, suitability or reliability of this data for any purpose. THE USER ACCEPTS THE DATA AND/OR SOFTWARE "AS IS" AND ASSUMES ALL RISKS ASSOCIATED WITH ITS USE.

IN NO EVENT SHALL MINNESOTASEASONS.COM, TNC, USDA-FS, USFWS, OR MNDNR BE LIABLE FOR ANY DIRECT, INDIRECT, INCIDENTAL, SPECIAL, EXEMPLARY, OR CONSEQUENTIAL DAMAGES (INCLUDING, BUT NOT LIMITED TO, PROCUREMENT OF SUBSTITUTE GOODS OR SERVICES; LOSS OF USE, DATA, OR PROFITS; OR BUSINESS INTERRUPTION) HOWEVER CAUSED AND ON ANY THEORY OF LIABILITY, WHETHER IN CONTRACT, STRICT LIABILITY, OR TORT (INCLUDING NEGLIGENCE OR OTHERS) ARISING IN ANY WAY OUT OF THE USE OF THIS DATA, EVEN IF ADVISED OF THE POSSIBILITY OF SUCH DAMAGE OR FOR ANY CLAIM BY ANY OTHER PARTY.

Your use of the data is acceptance on your part of the terms and conditions set forth herein.