

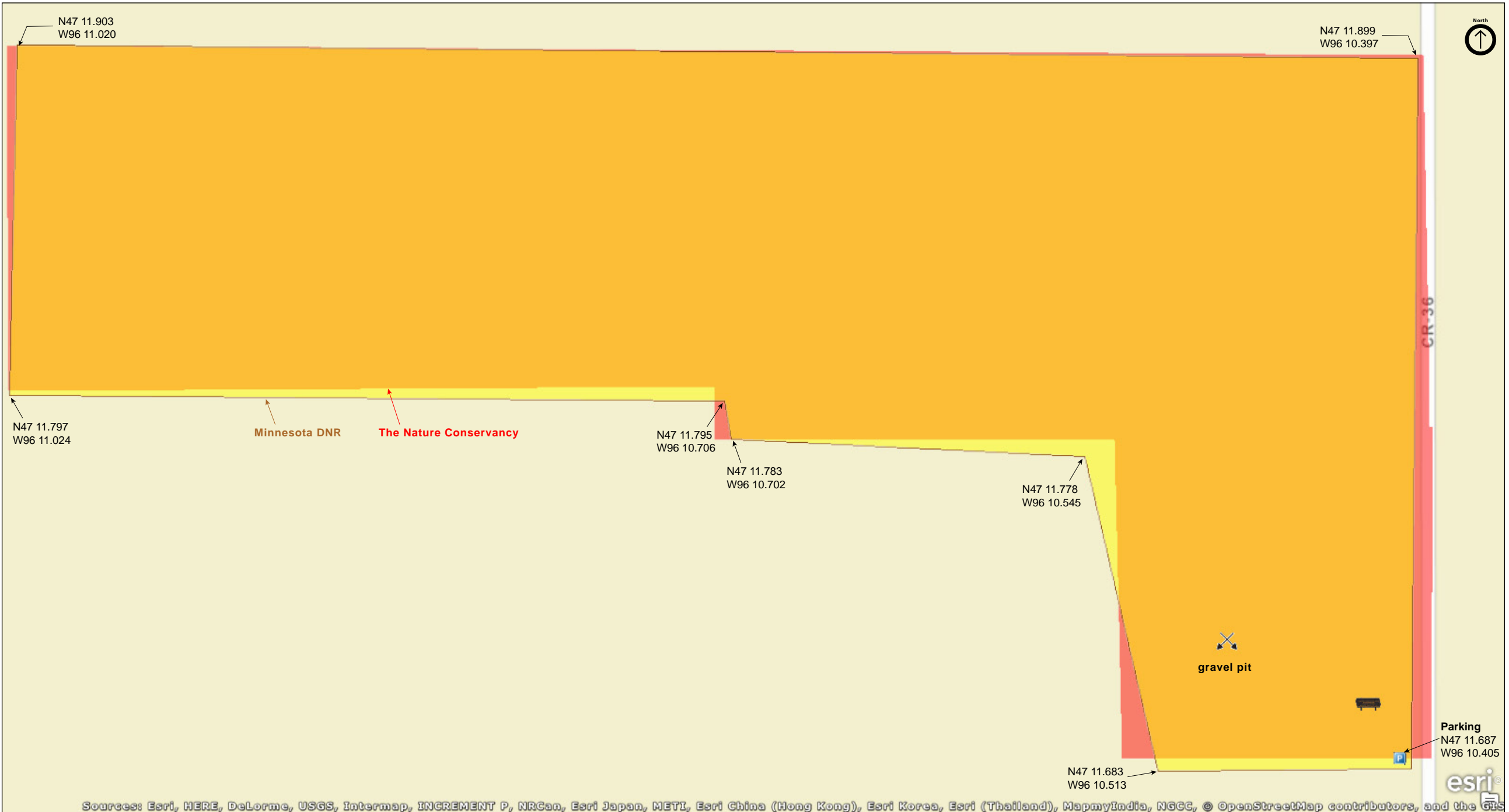
Frenchman's Bluff SNA

Norman County



Frenchman's Bluff SNA

Norman County



Sources: Esri, HERE, DeLorme, USGS, Intermap, INCREMENT P, NRCan, Esri Japan, METI, Esri China (Hong Kong), Esri Korea, Esri (Thailand), MapmyIndia, NGCC, © OpenStreetMap contributors, and the GIS

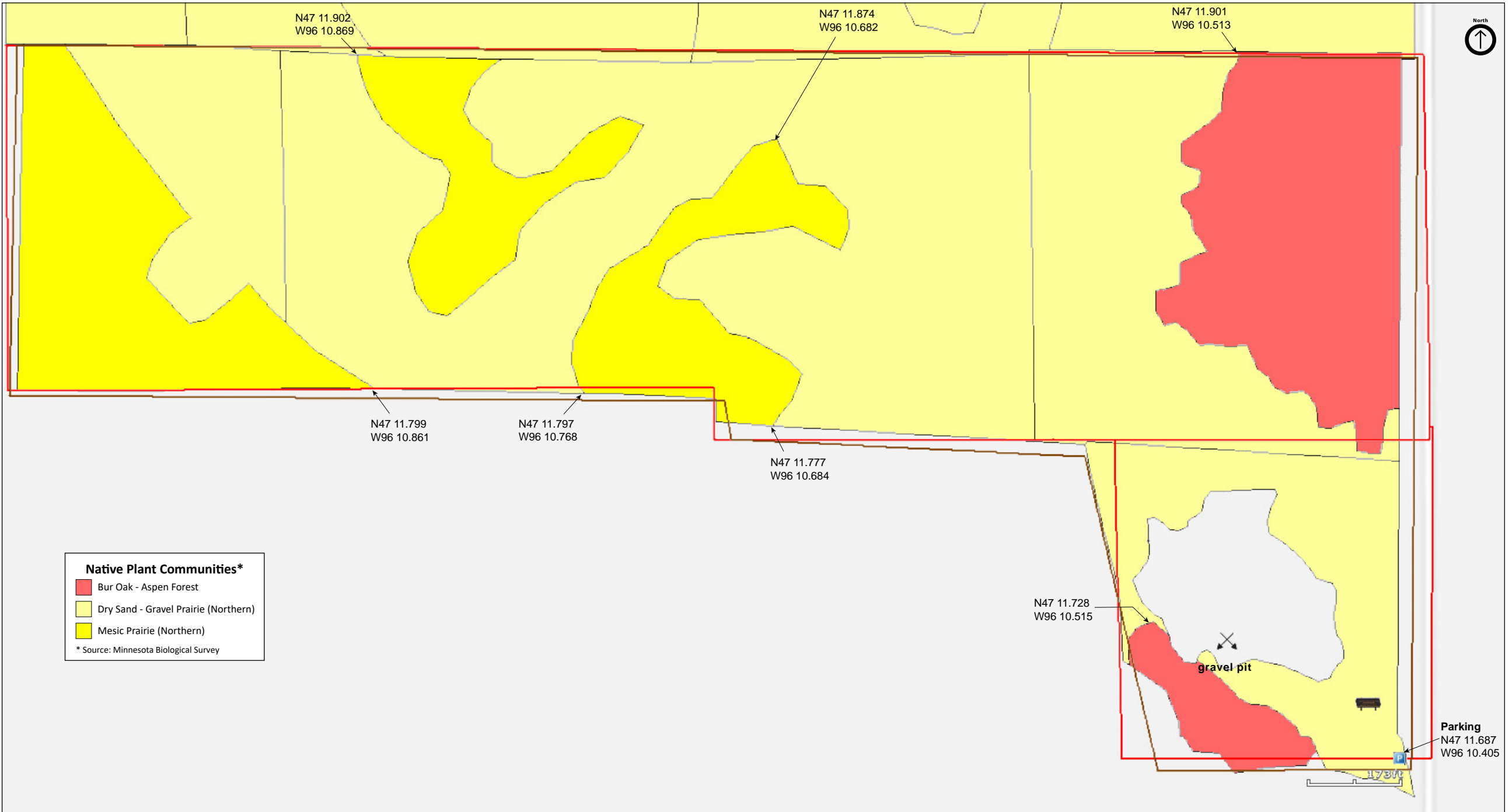
Frenchman's Bluff SNA

Norman County



Frenchman's Bluff SNA

Norman County



Native Plant Communities*

- Bur Oak - Aspen Forest
- Dry Sand - Gravel Prairie (Northern)
- Mesic Prairie (Northern)

* Source: Minnesota Biological Survey



No Wetlands

Frenchman's Bluff SNA

Directions and Notes from Minnesota DNR

Directions: From Syre 4 miles E on MN Hwy 113, then 1.1 miles N on Co Hwy 36. Park in pull-off on W.

Lat/Lon: 47.194783, -96.173418

This SNA has been extensively used by the University of Minnesota Itasca Biological Station and other university groups for education and research into the dynamics, flora and fauna of Midwestern prairies.

This site has no maintained trails or other recreational facilities.

This site is owned by The Nature Conservancy.

Directions and Notes from The Nature Conservancy

The preserve is located in the Flom township of Norman County, about five miles southeast of Twin Valley and 35 miles northeast of Fargo-Moorhead. From the village of Syre, take State Highway 113 east. Go north on County Road 36 for about one mile. The preserve is on the west side of the road.

The Conservancy now leases the land to the Minnesota Department of Natural Resources' Scientific and Natural Areas Program.

The Nature Conservancy controls the spread of spotted knapweed, yellow sweet clover, and other invasive species by mowing, spot spraying and conducting prescribed burns.

Notes from MinnesotaSeasons.com

Parking

N47 11.687, W96 10.405

Hiking Trails

A well-worn footpath leads a short distance from the parking area to the north rim of the quarry and then disappears. There are no other trails.

The Nature Conservancy owns the land at Frenchman's Bluff and leases it back to the Minnesota DNR. The site is 52 acres of glacial moraine overlooking the Red River Valley/Glacial Lake Agassiz basin.

The preserve includes an abandoned quarry near the parking area, There is a 5½ acre section of bur oak - aspen forest at the northeast corner. The understory in this section includes a dense shrub layer. While not impenetrable, passage through this area is difficult at best. There is another, smaller forested section south of the quarry. The rest of the preserve is dry sand - gravel prairie and mesic prairie.

Greater Prairie-chicken and Powesheik skipperling, both special concern species, and Dakota skipper, a threatened species, have been seen here. Five state listed rare plant species are found here: spikeoat, prairie moonwort, plains reed grass, and blanket flower, all special concern species; and Frenchman's Bluff moonwort, an endangered species.

DISCLAIMER OF WARRANTIES AND LIMITATIONS OF LIABILITY

MinnesotaSeasons.com, The Nature Conservancy, U.S. Department of Agriculture, Forest Service, U.S. Fish and Wildlife Service, the state of Minnesota, the Minnesota Department of Natural Resources, and their employees, make no representations or warranties, express or implied, with respect to the use of or reliance on the data provided herewith, regardless of its format or means of transmission. There are no guarantees or representations to the user as to the accuracy, currency, completeness, suitability or reliability of this data for any purpose. THE USER ACCEPTS THE DATA AND/OR SOFTWARE "AS IS" AND ASSUMES ALL RISKS ASSOCIATED WITH ITS USE.

IN NO EVENT SHALL MINNESOTASEASONS.COM, TNC, USDA-FS, USFWS, OR MNDNR BE LIABLE FOR ANY DIRECT, INDIRECT, INCIDENTAL, SPECIAL, EXEMPLARY, OR CONSEQUENTIAL DAMAGES (INCLUDING, BUT NOT LIMITED TO, PROCUREMENT OF SUBSTITUTE GOODS OR SERVICES; LOSS OF USE, DATA, OR PROFITS; OR BUSINESS INTERRUPTION) HOWEVER CAUSED AND ON ANY THEORY OF LIABILITY, WHETHER IN CONTRACT, STRICT LIABILITY, OR TORT (INCLUDING NEGLIGENCE OR OTHERS) ARISING IN ANY WAY OUT OF THE USE OF THIS DATA, EVEN IF ADVISED OF THE POSSIBILITY OF SUCH DAMAGE OR FOR ANY CLAIM BY ANY OTHER PARTY.

Your use of the data is acceptance on your part of the terms and conditions set forth herein.