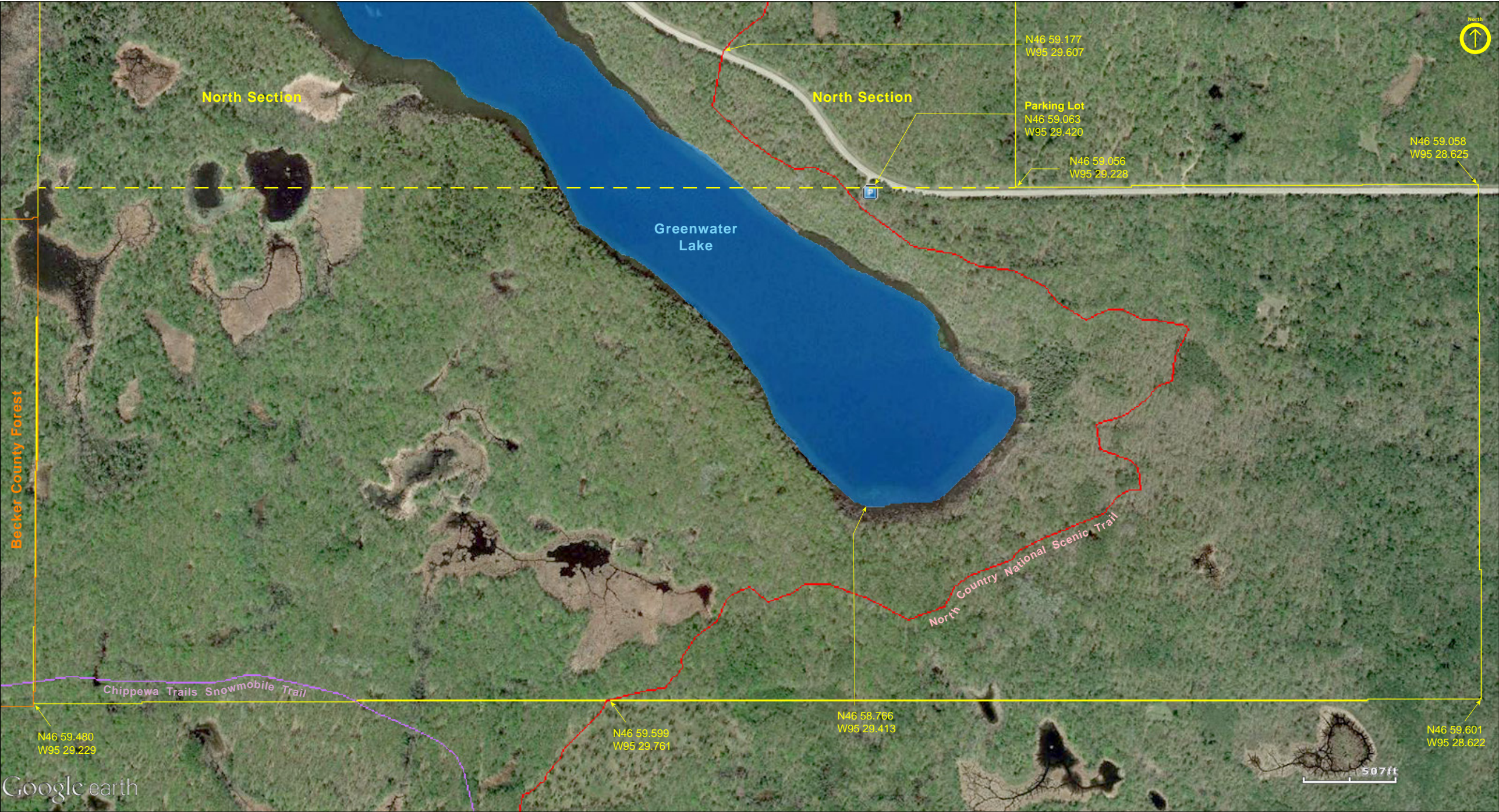


Greenwater Lake SNA  
South Section

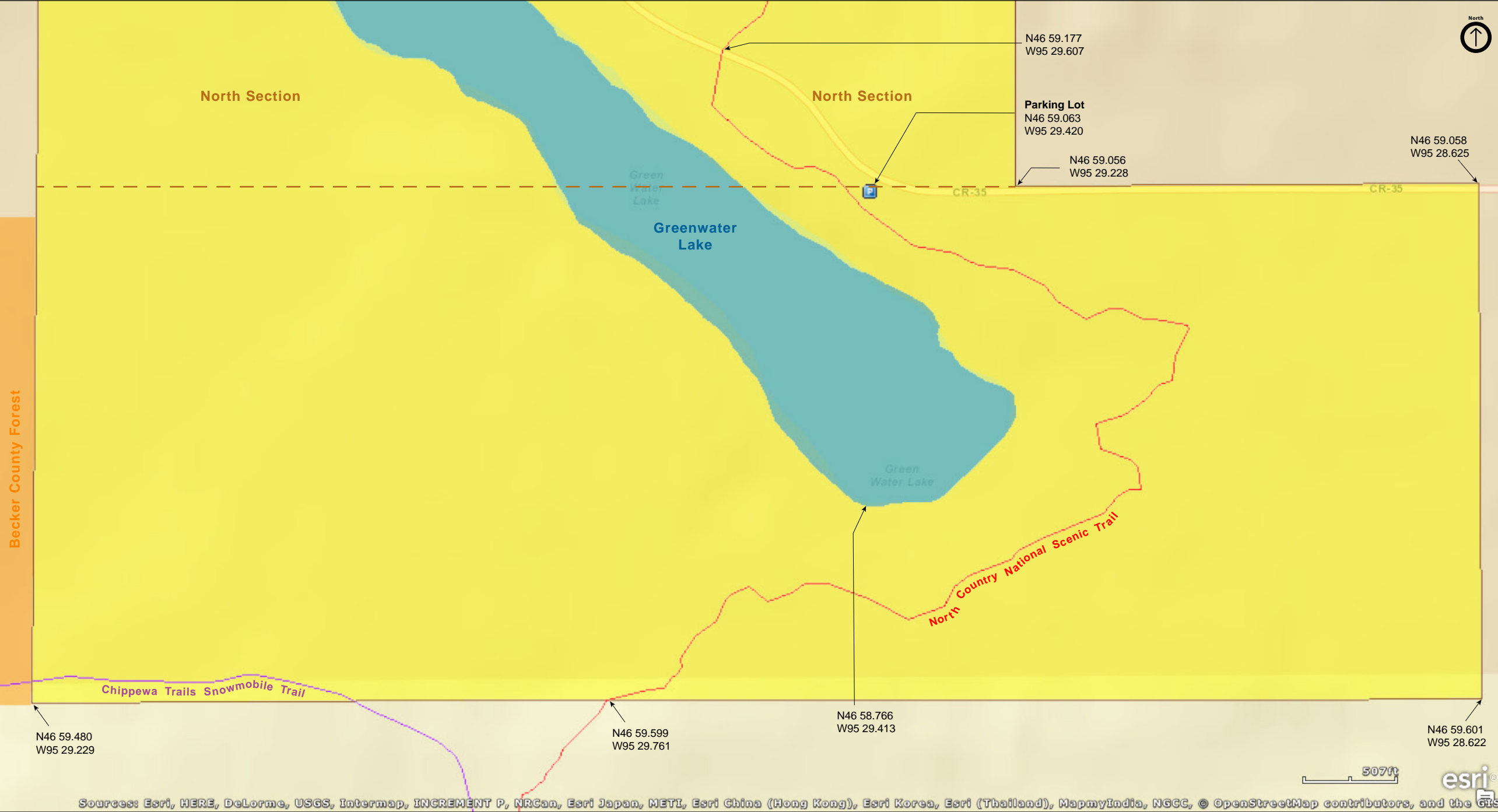
Becker County





Greenwater Lake SNA  
South Section

Becker County





Greenwater Lake SNA  
South Section

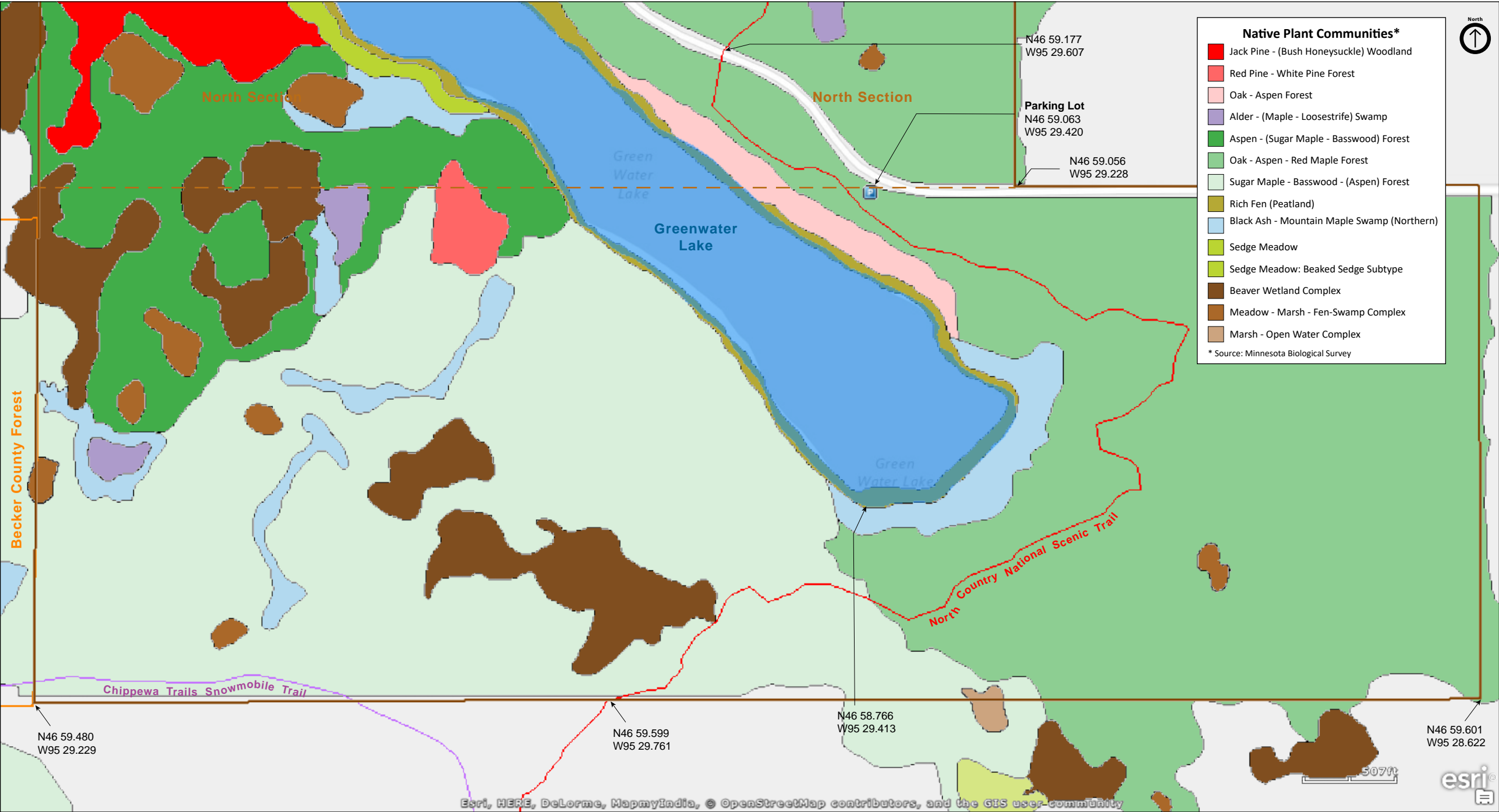
Becker County





Greenwater Lake SNA  
South Section

Becker County





Greenwater Lake SNA  
South Section

National Wetlands Inventory

Becker County





# Greenwater Lake SNA

## South Section

### Directions and Notes from Minnesota DNR

**Directions:** From Ponsford 3.5 miles W on Co Hwy 26, then 1 mile N on Co Hwy 37, then 1.5 miles W on Co Hwy 35. Park in parking lot on S.

**Lat/Lon:** 46.984163, -95.490292

The North Country National Scenic Trail is being built through site. A maintained snowmobile trail passes through site.

### Notes from MinnesotaSeasons.com

#### **Parking**

N46 59.063, W95 29.420

Park in the parking lot for the North Country National Scenic Trail on the south side of County Road 35.

#### **Hiking Trails**

A section of the North Country National Scenic Trail passes through the site. A section of Winter Wonderland Trails, a Becker Co. Parks & Recreation snowmobile trail, passes through the southwest corner of the site.

This SNA is on the White Earth Indian Reservation. It is bordered on the north and west by Becker County Forest land.

### DISCLAIMER OF WARRANTIES AND LIMITATIONS OF LIABILITY

MinnesotaSeasons.com, The Nature Conservancy, U.S. Department of Agriculture, Forest Service, U.S. Fish and Wildlife Service, the state of Minnesota, the Minnesota Department of Natural Resources, and their employees, make no representations or warranties, express or implied, with respect to the use of or reliance on the data provided herewith, regardless of its format or means of transmission. There are no guarantees or representations to the user as to the accuracy, currency, completeness, suitability or reliability of this data for any purpose. THE USER ACCEPTS THE DATA AND/OR SOFTWARE "AS IS" AND ASSUMES ALL RISKS ASSOCIATED WITH ITS USE.

IN NO EVENT SHALL MINNESOTASEASONS.COM, TNC, USDA-FS, USFWS, OR MNDNR BE LIABLE FOR ANY DIRECT, INDIRECT, INCIDENTAL, SPECIAL, EXEMPLARY, OR CONSEQUENTIAL DAMAGES (INCLUDING, BUT NOT LIMITED TO, PROCUREMENT OF SUBSTITUTE GOODS OR SERVICES; LOSS OF USE, DATA, OR PROFITS; OR BUSINESS INTERRUPTION) HOWEVER CAUSED AND ON ANY THEORY OF LIABILITY, WHETHER IN CONTRACT, STRICT LIABILITY, OR TORT (INCLUDING NEGLIGENCE OR OTHERS) ARISING IN ANY WAY OUT OF THE USE OF THIS DATA, EVEN IF ADVISED OF THE POSSIBILITY OF SUCH DAMAGE OR FOR ANY CLAIM BY ANY OTHER PARTY.

Your use of the data is acceptance on your part of the terms and conditions set forth herein.