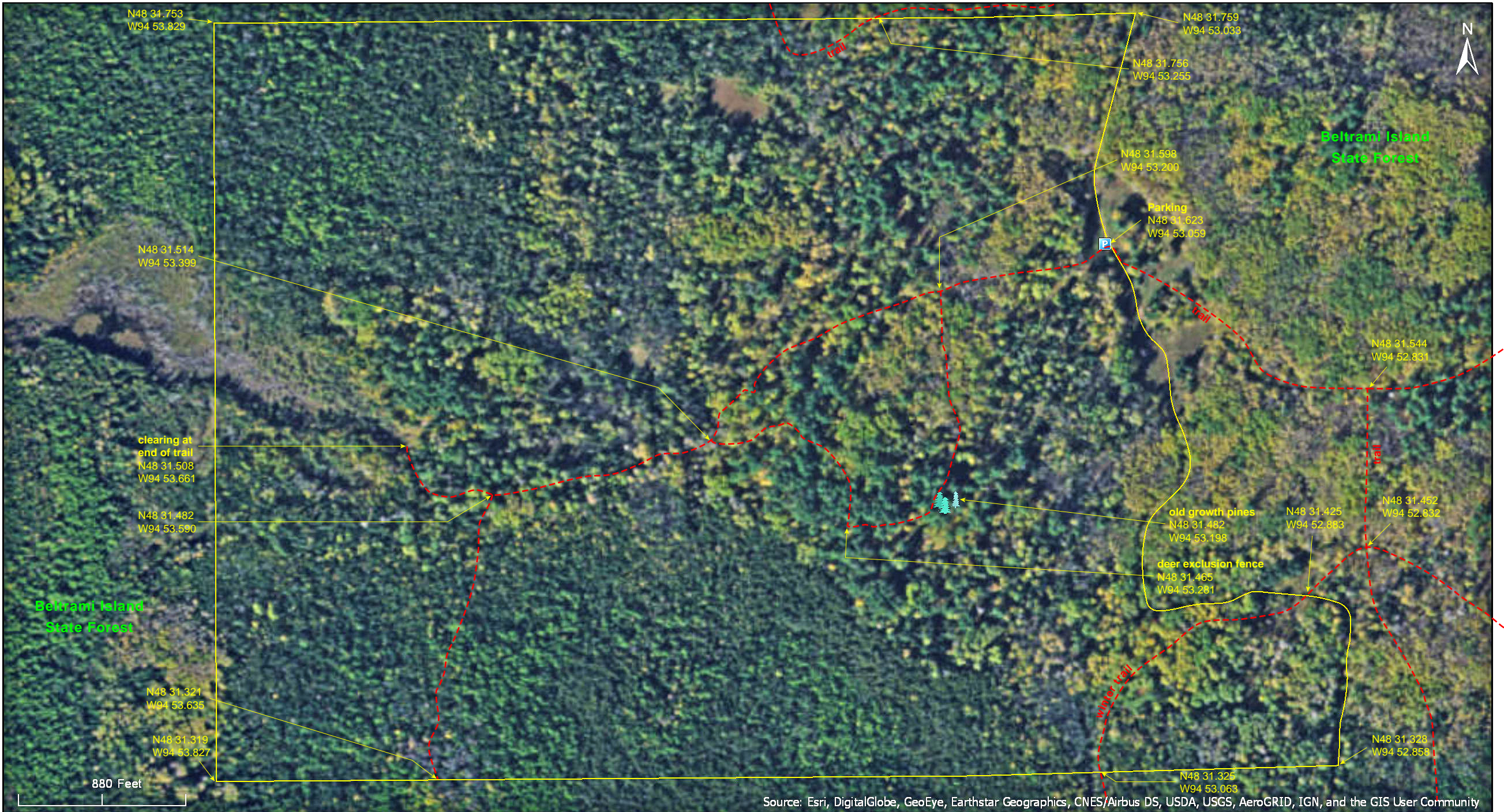


Gustafson's Camp SNA

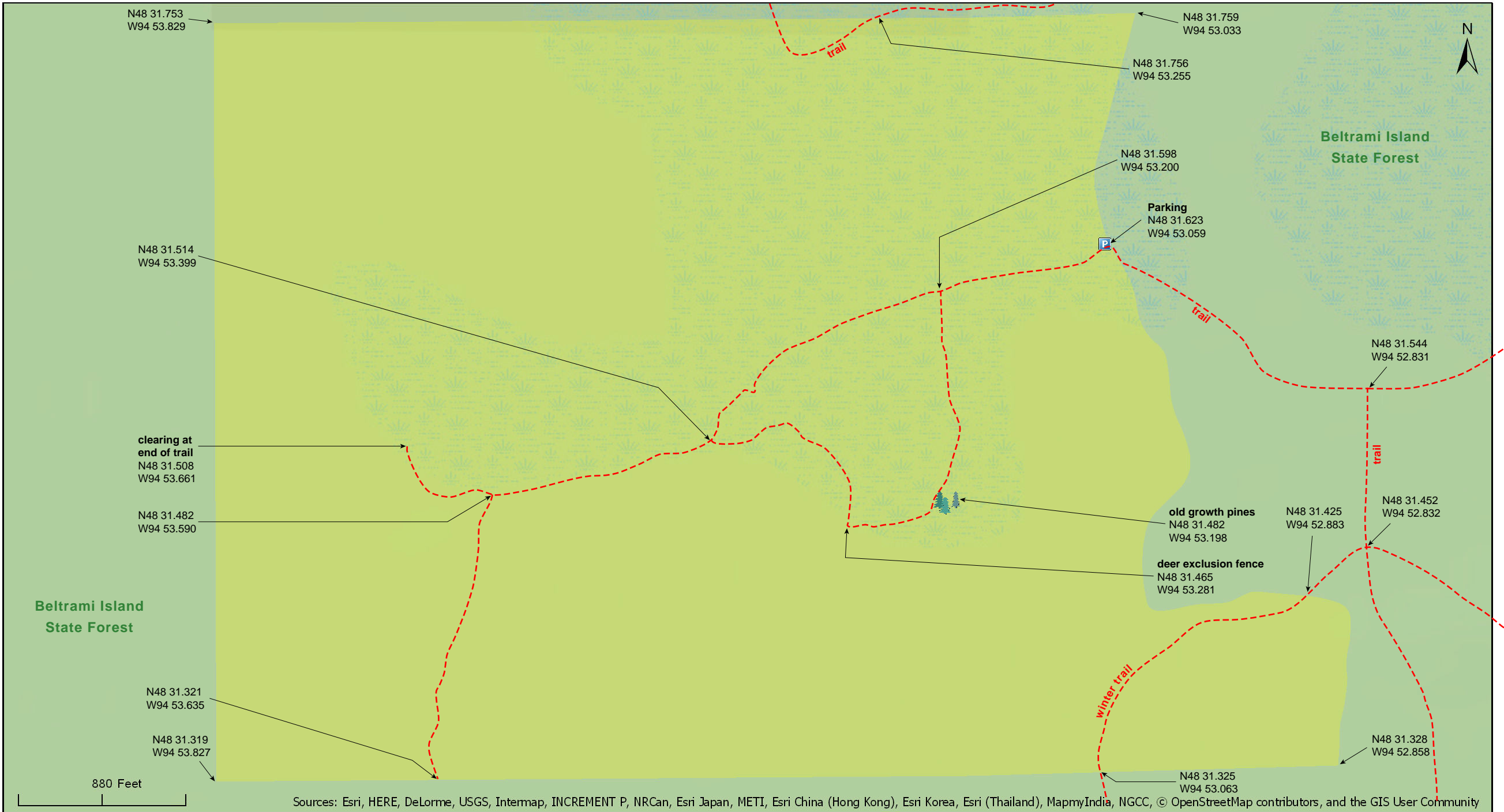
Lake of the Woods County



Source: Esri, DigitalGlobe, GeoEye, Earthstar Geographics, CNES/Airbus DS, USDA, USGS, AeroGRID, IGN, and the GIS User Community

Gustafson's Camp SNA

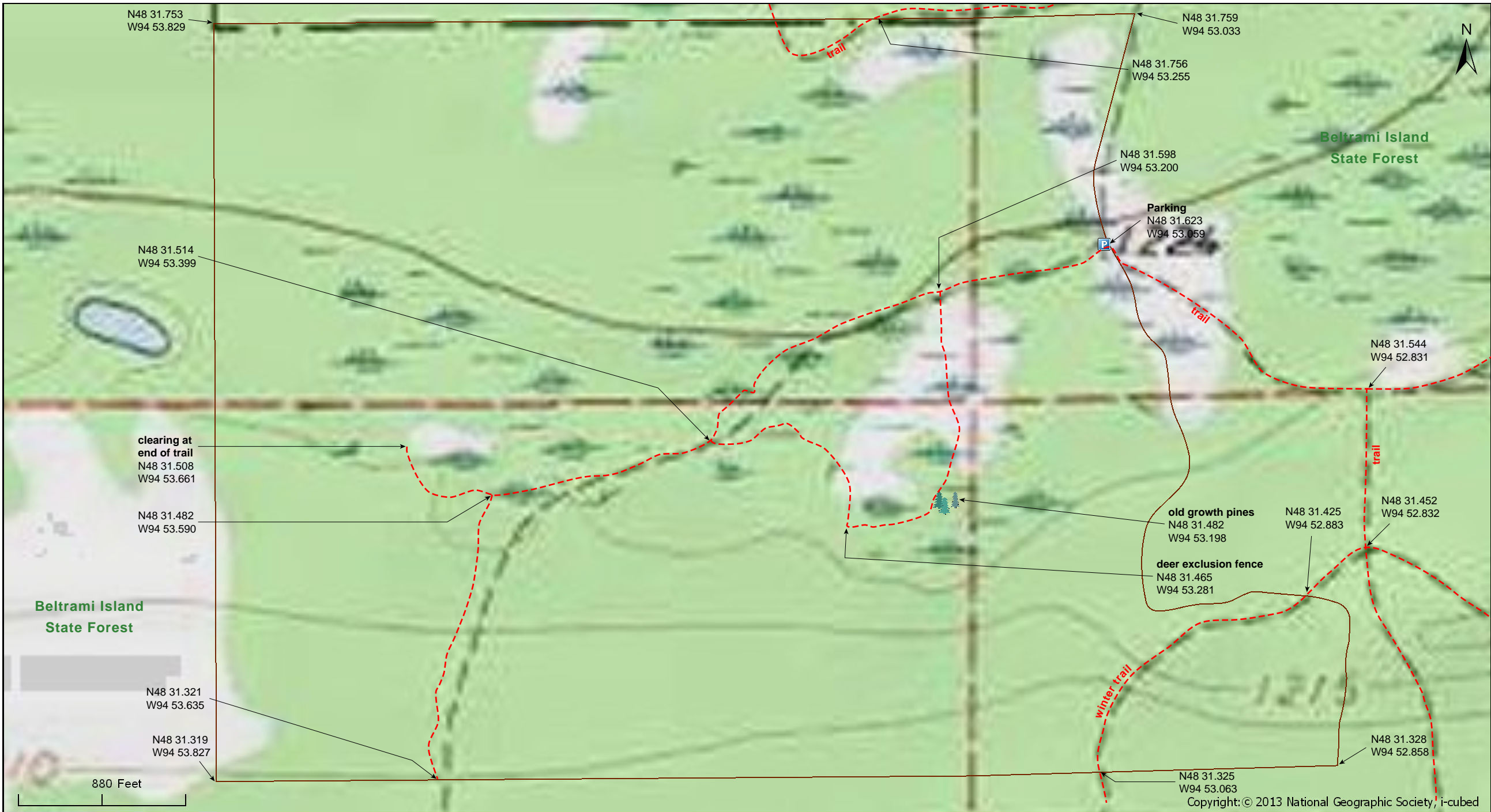
Lake of the Woods County



Sources: Esri, HERE, DeLorme, USGS, Internmap, INCREMENT P, NRCan, Esri Japan, METI, Esri China (Hong Kong), Esri Korea, Esri (Thailand), MapmyIndia, NGCC, © OpenStreetMap contributors, and the GIS User Community

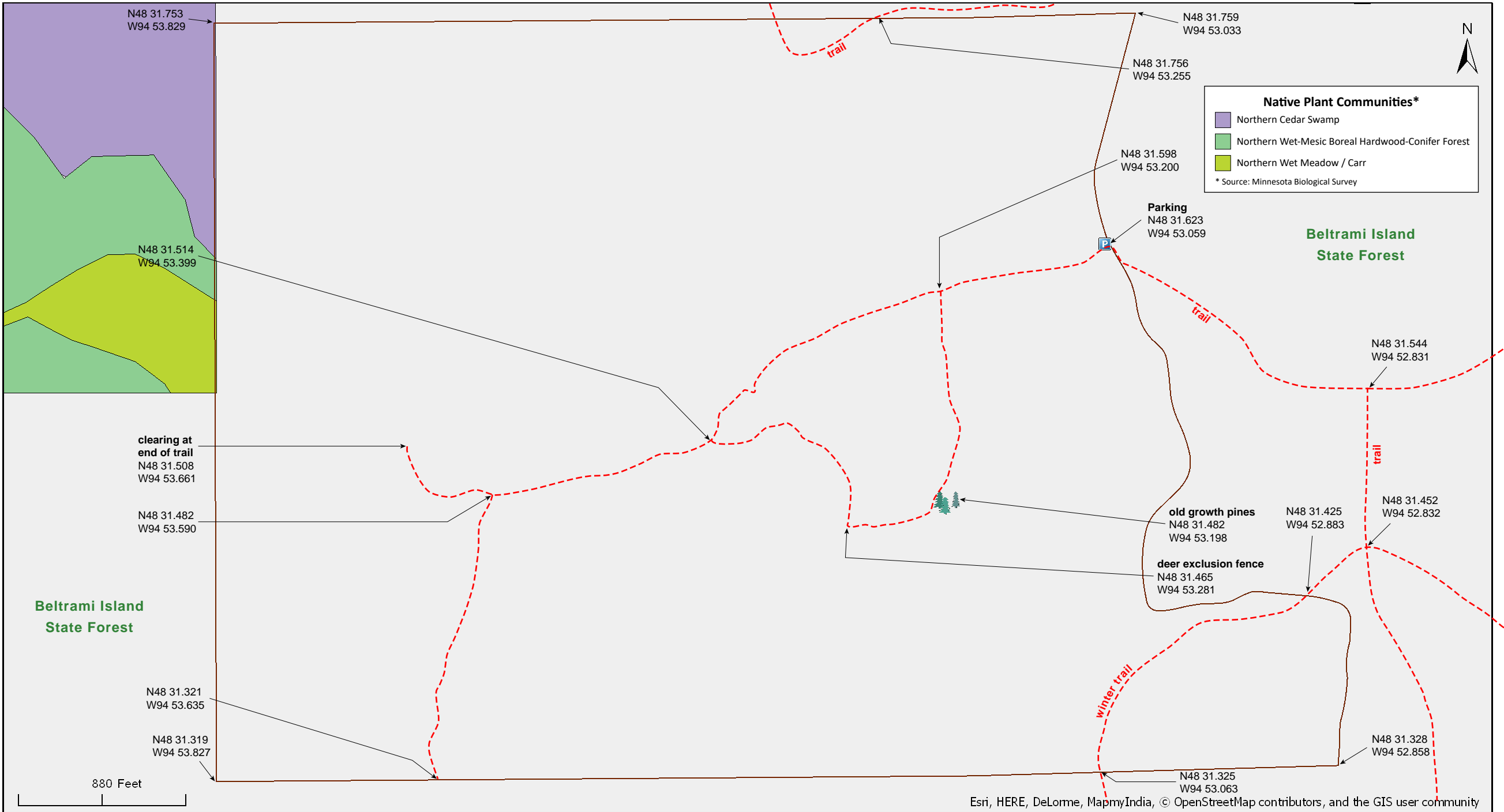
Gustafson's Camp SNA

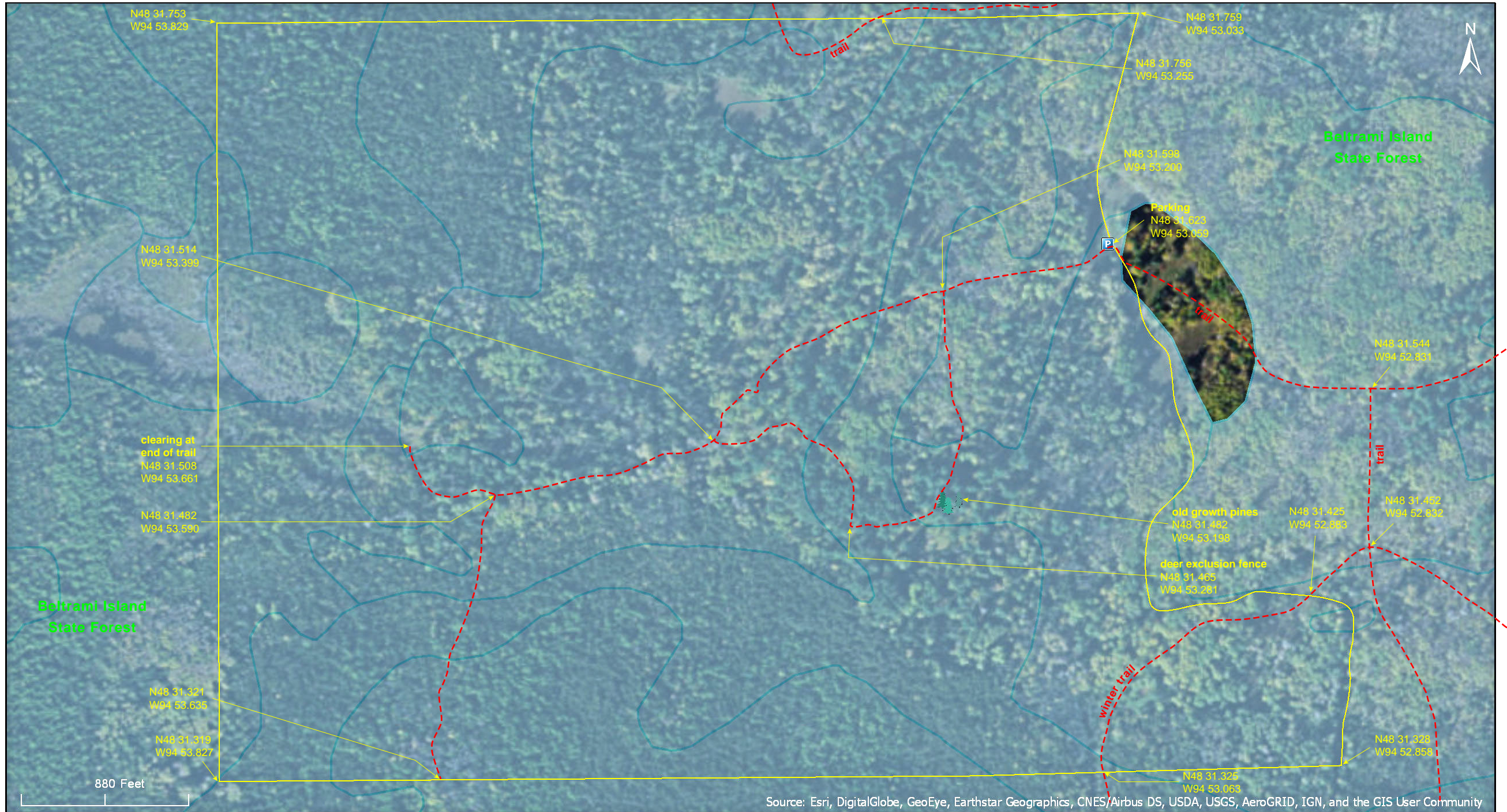
Lake of the Woods County



Gustafson's Camp SNA

Lake of the Woods County





Source: Esri, DigitalGlobe, GeoEye, Earthstar Geographics, CNES/Airbus DS, USDA, USGS, AeroGRID, IGN, and the GIS User Community

Gustafson's Camp SNA

Directions from Minnesota DNR

Directions: From Baudette 2.5 miles W on MN Hwy 11, then 10.8 miles S on Co Rd 3 (Co Rd 1/Wilderness Dr), then 11.9 miles W on Co Rd 87 (Stoney Corners Forest Rd), then 2.1 miles S on unnamed road to large clearing. Park and trek W into site. GPS recommended.

Lat/Lon: 48.527054, -94.884322

This site has no maintained trails or other recreational facilities. This site is in an Audubon Important Bird Area. This site is within the Beltrami Island State Forest.

Notes from MinnesotaSeasons.com

Unnamed Forest Road (Turnoff)

N48 33.158, W94 53.370

Parking

N48 31.623, W94 53.059

Getting There

An unnamed forest road leads 2.1 miles south from Stoney Corners Trail to a parking area for this SNA. It is a winding, two-rut road, wet in spots and is crossed by a narrow stream at one point. Vehicles without 4-wheel drive should have no problem.

Flies and Mosquitoes

Visitors may want to stop at the turnoff to the unnamed forest road and apply DEET. They will be greeted at the parking area by scores of deer flies and horseflies, and in the forest by uncountable mosquitoes. On my visit the flies did not bite (possibly deterred by a liberal application of DEET) and did not follow me into the forest. A mosquito head net was brought but not needed.

Trails

According to the MN DNR Website, there are no maintained trails. The key word is "maintained." The main trail leads from the parking area west 0.8 miles to a small clearing 200 yards short of the western boundary of the site. It is a wide trail and there are no shrubs or trees growing on it. It had not been mowed in the spring of 2013 and was blocked at several points by wind thrown trees and drooping branches.

There are two side trails accessed from the main trail. The first one is 0.1 mile from the parking area. It is similar in width and condition to the main trail. A 0.4 mile long loop, it leads through some spectacular old growth pines, past a deer enclosure, and back to the main trail. It rejoins the main trail .04 miles from the parking area.

A second side trail leads south 0.2 miles to the southern boundary of the site. This trail is no more than a narrow footpath through a cedar swamp. It should not be missed. Visitors will have to step carefully to avoid numerous, water-filled, 1' to 4' wide pools, but waterproof footwear is not needed.

Waterproof footwear is recommended if venturing off of the trails on this map.

DISCLAIMER OF WARRANTIES AND LIMITATIONS OF LIABILITY

MinnesotaSeasons.com, The Nature Conservancy, U.S. Department of Agriculture, Forest Service, U.S. Fish and Wildlife Service, the state of Minnesota, the Minnesota Department of Natural Resources, and their employees, make no representations or warranties, express or implied, with respect to the use of or reliance on the data provided herewith, regardless of its format or means of transmission. There are no guarantees or representations to the user as to the accuracy, currency, completeness, suitability or reliability of this data for any purpose. THE USER ACCEPTS THE DATA AND/OR SOFTWARE "AS IS" AND ASSUMES ALL RISKS ASSOCIATED WITH ITS USE.

IN NO EVENT SHALL MINNESOTASEASONS.COM, TNC, USDA-FS, USFWS, OR MNDNR BE LIABLE FOR ANY DIRECT, INDIRECT, INCIDENTAL, SPECIAL, EXEMPLARY, OR CONSEQUENTIAL DAMAGES (INCLUDING, BUT NOT LIMITED TO, PROCUREMENT OF SUBSTITUTE GOODS OR SERVICES; LOSS OF USE, DATA, OR PROFITS; OR BUSINESS INTERRUPTION) HOWEVER CAUSED AND ON ANY THEORY OF LIABILITY, WHETHER IN CONTRACT, STRICT LIABILITY, OR TORT (INCLUDING NEGLIGENCE OR OTHERS) ARISING IN ANY WAY OUT OF THE USE OF THIS DATA, EVEN IF ADVISED OF THE POSSIBILITY OF SUCH DAMAGE OR FOR ANY CLAIM BY ANY OTHER PARTY.

Your use of the data is acceptance on your part of the terms and conditions set forth herein.