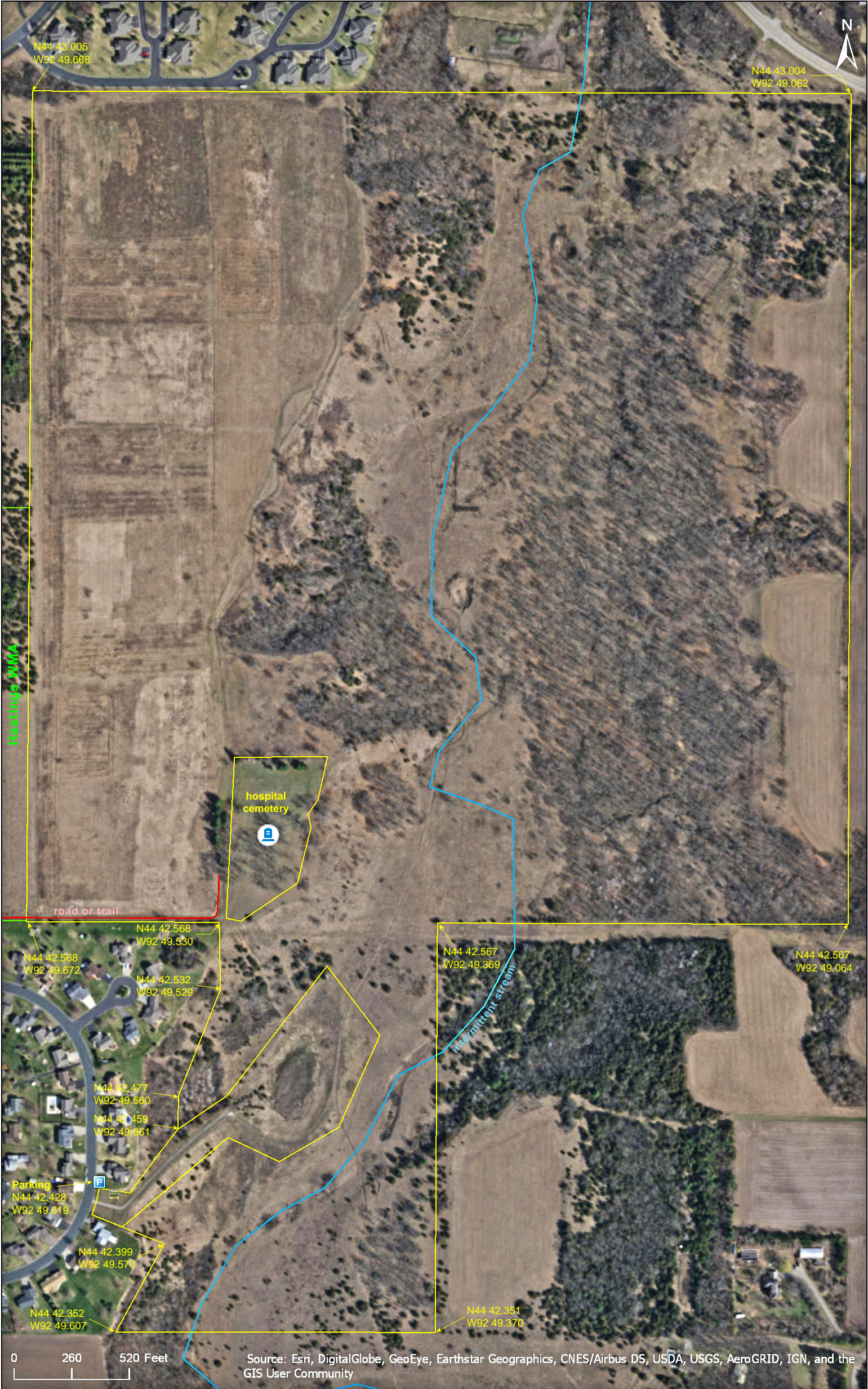


Hastings Sand Coulee SNA
North Unit

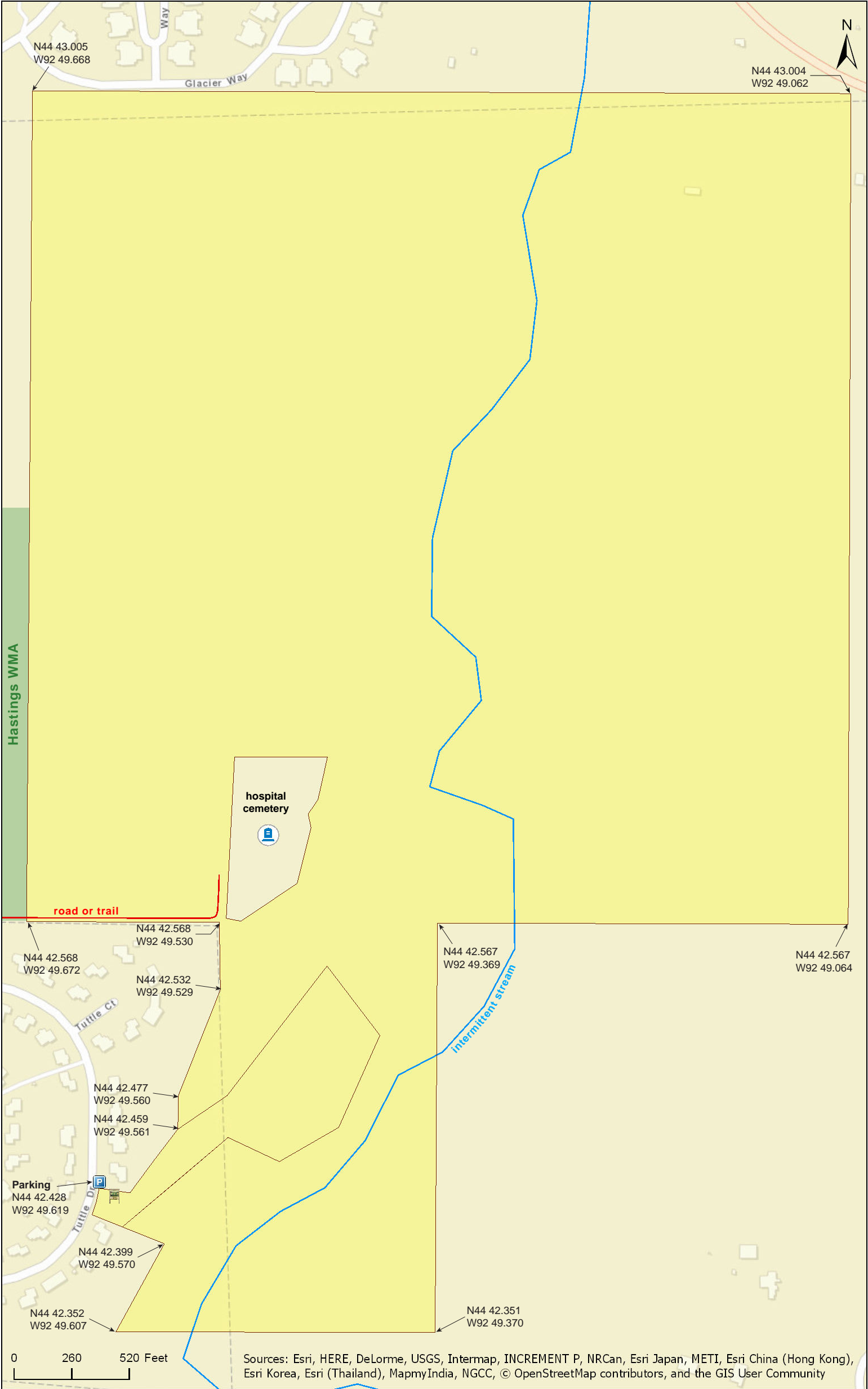
Dakota County



Hastings Sand Coulee SNA

North Unit

Dakota County



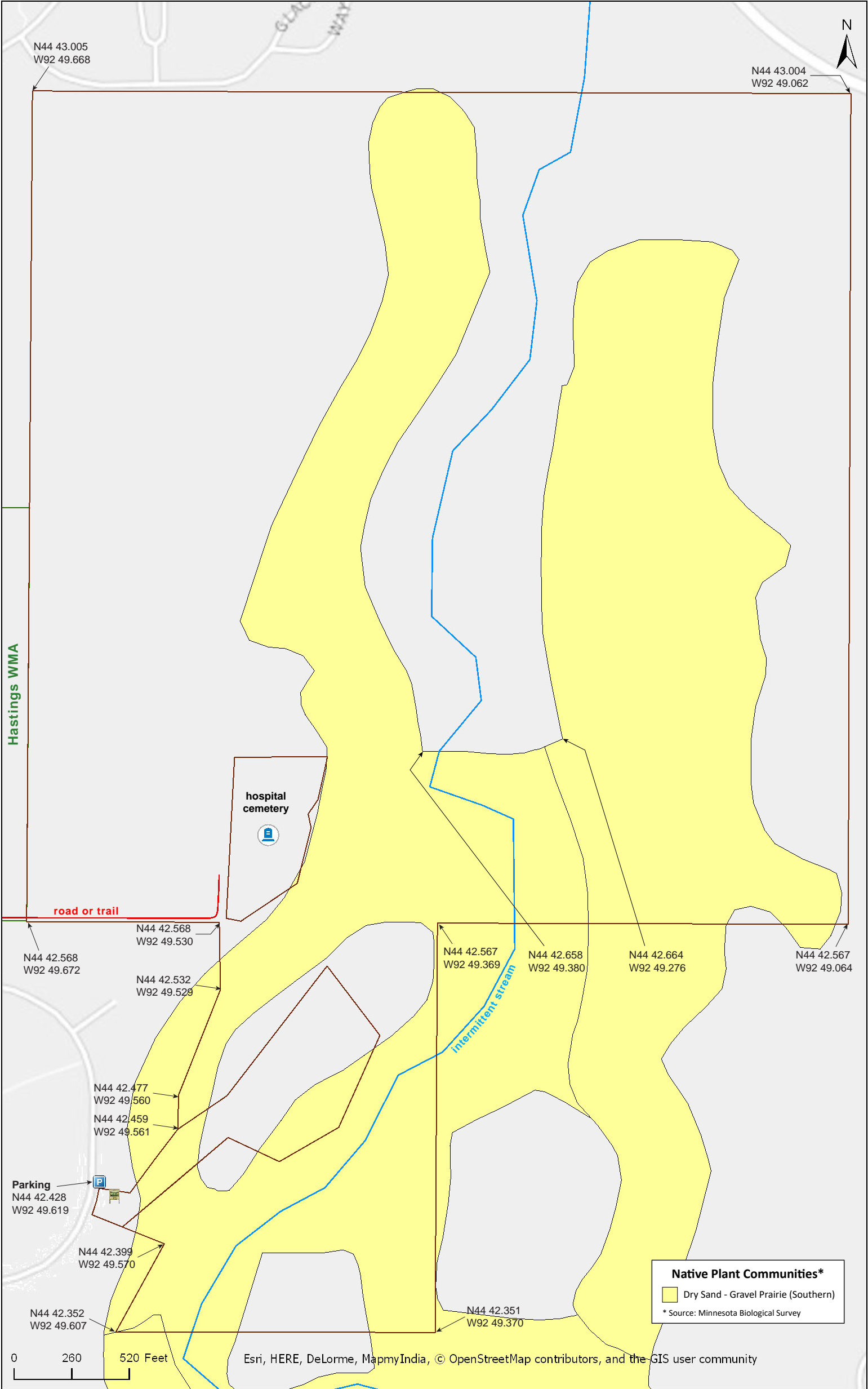
Hastings Sand Coulee SNA
North Unit

Dakota County



Hastings Sand Coulee SNA
North Unit

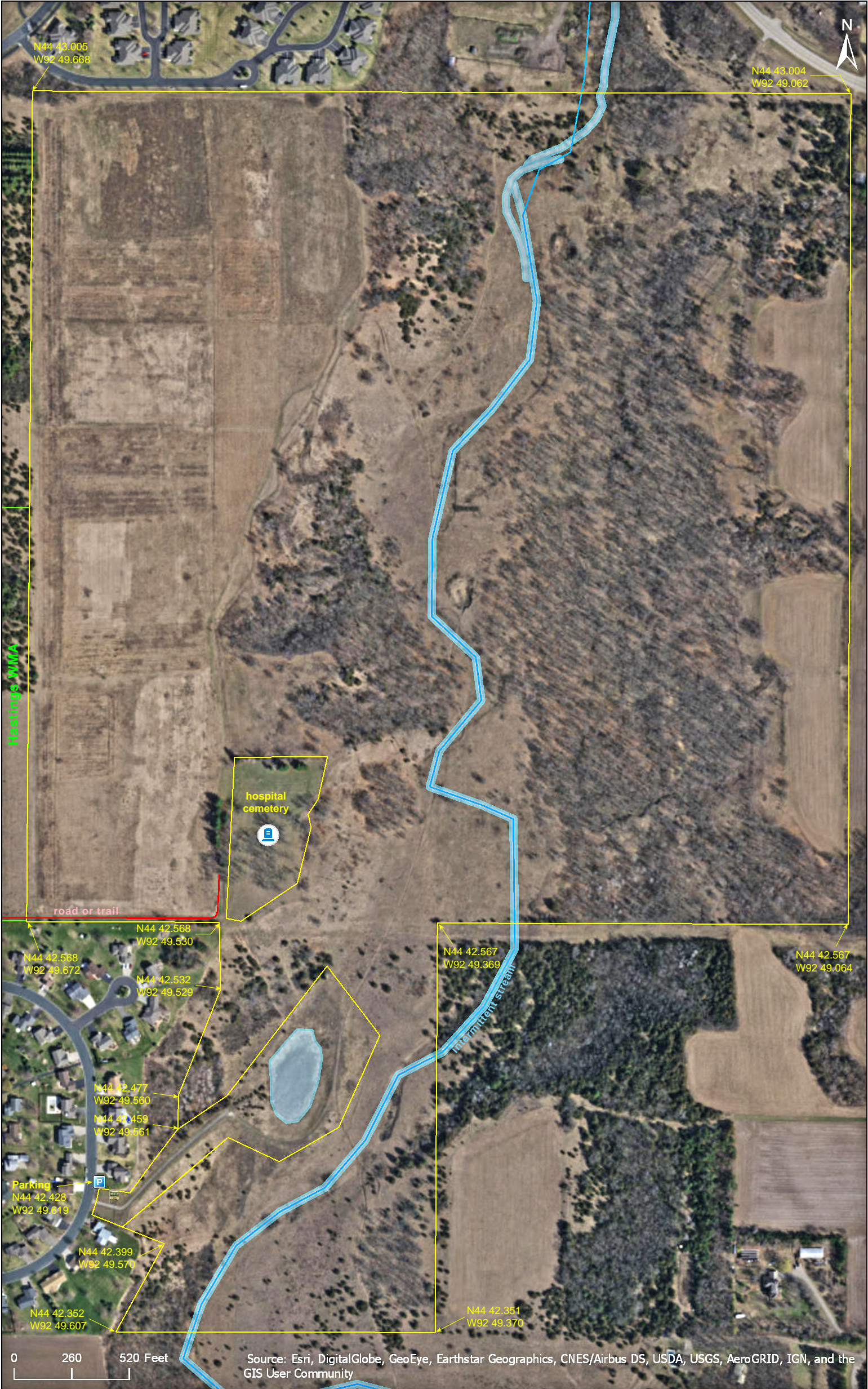
Dakota County



Hastings Sand Coulee SNA
North Unit

National Wetlands Inventory

Dakota County



Hastings Sand Coulee SNA North Unit

Directions and Notes from Minnesota DNR

North Unit

Directions: From Hastings 1 mile SE on MN Hwy 316, then 0.6 mile E and S on Tuttle Dr. Park at stormwater utility and hike maintenance road NE into site.

Lat/Lon: 44.707128, -92.826985

South Unit

Directions: From Hastings 2.4 miles SE on MN Hwy 316. Park in lot on SW, just past guard rail.

Lat/Lon: 44.693457, -92.817891

The scenic slopes and ravines of the coulee are vulnerable to erosion. Please take care to avoid damage to the slopes when visiting the area.

Hastings WMA is adjacent to this site.

Notes from MinnesotaSeasons.com

Parking

North Unit (Stormwater Utility)
N44 42.428, W92 49.619

South Unit Parking Lot (MN Hwy 316)
N44 41.608, W92 49.073

This SNA is made up of three disconnected units. The center unit is an abandoned gravel pit.

Hiking Trails

There are no maintained hiking trails. A maintained snowmobile trail, Dakota County Trails Snowmobile Trail 123, passes through the south unit.

DISCLAIMER OF WARRANTIES AND LIMITATIONS OF LIABILITY

MinnesotaSeasons.com, The Nature Conservancy, U.S. Department of Agriculture, Forest Service, U.S. Fish and Wildlife Service, the state of Minnesota, the Minnesota Department of Natural Resources, and their employees, make no representations or warranties, express or implied, with respect to the use of or reliance on the data provided herewith, regardless of its format or means of transmission. There are no guarantees or representations to the user as to the accuracy, currency, completeness, suitability or reliability of this data for any purpose. THE USER ACCEPTS THE DATA AND/OR SOFTWARE "AS IS" AND ASSUMES ALL RISKS ASSOCIATED WITH ITS USE.

IN NO EVENT SHALL MINNESOTASEASONS.COM, TNC, USDA-FS, USFWS, OR MNDNR BE LIABLE FOR ANY DIRECT, INDIRECT, INCIDENTAL, SPECIAL, EXEMPLARY, OR CONSEQUENTIAL DAMAGES (INCLUDING, BUT NOT LIMITED TO, PROCUREMENT OF SUBSTITUTE GOODS OR SERVICES; LOSS OF USE, DATA, OR PROFITS; OR BUSINESS INTERRUPTION) HOWEVER CAUSED AND ON ANY THEORY OF LIABILITY, WHETHER IN CONTRACT, STRICT LIABILITY, OR TORT (INCLUDING NEGLIGENCE OR OTHERS) ARISING IN ANY WAY OUT OF THE USE OF THIS DATA, EVEN IF ADVISED OF THE POSSIBILITY OF SUCH DAMAGE OR FOR ANY CLAIM BY ANY OTHER PARTY.

Your use of the data is acceptance on your part of the terms and conditions set forth herein.