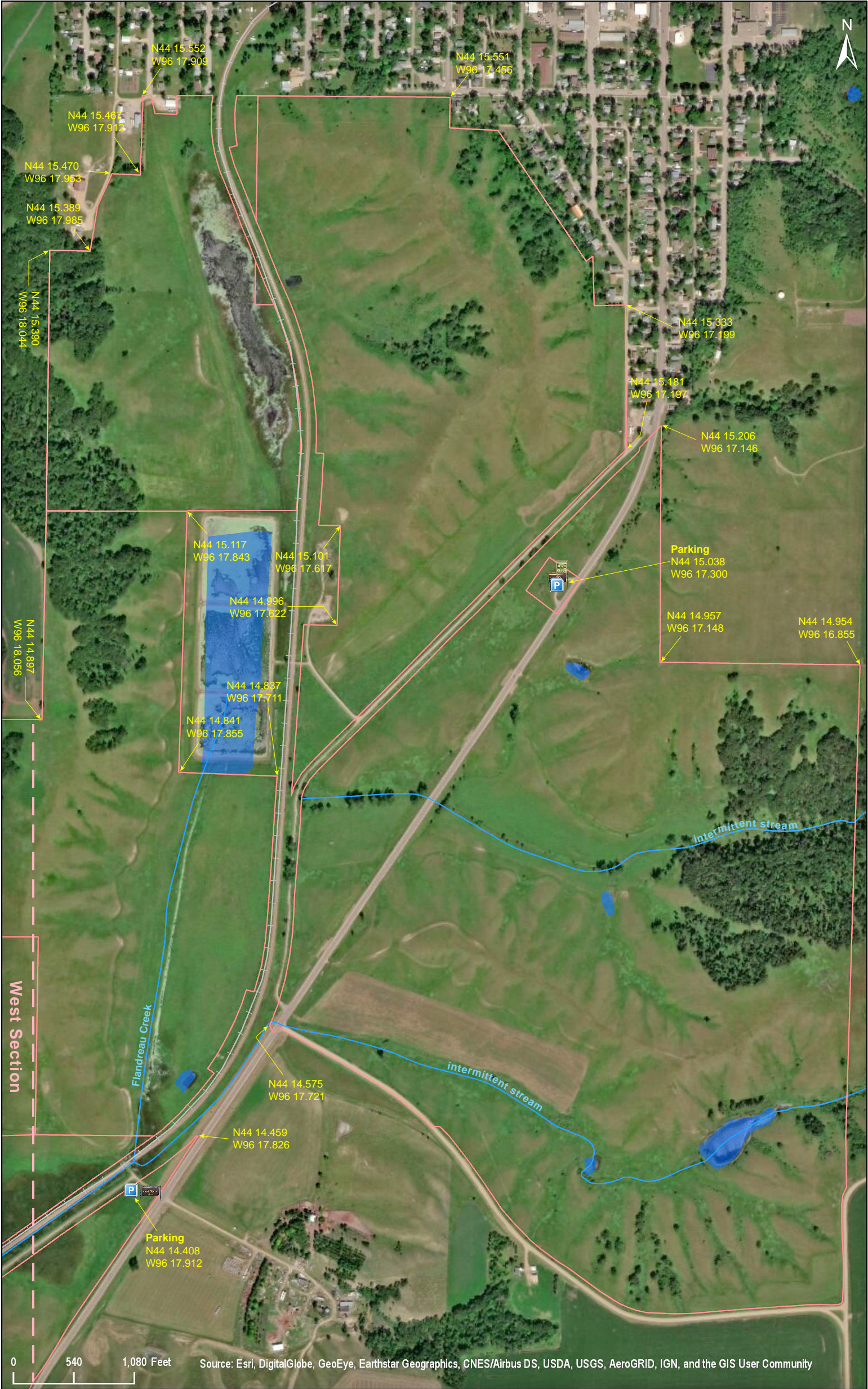


Hole-in-the-Mountain Prairie  
East Section

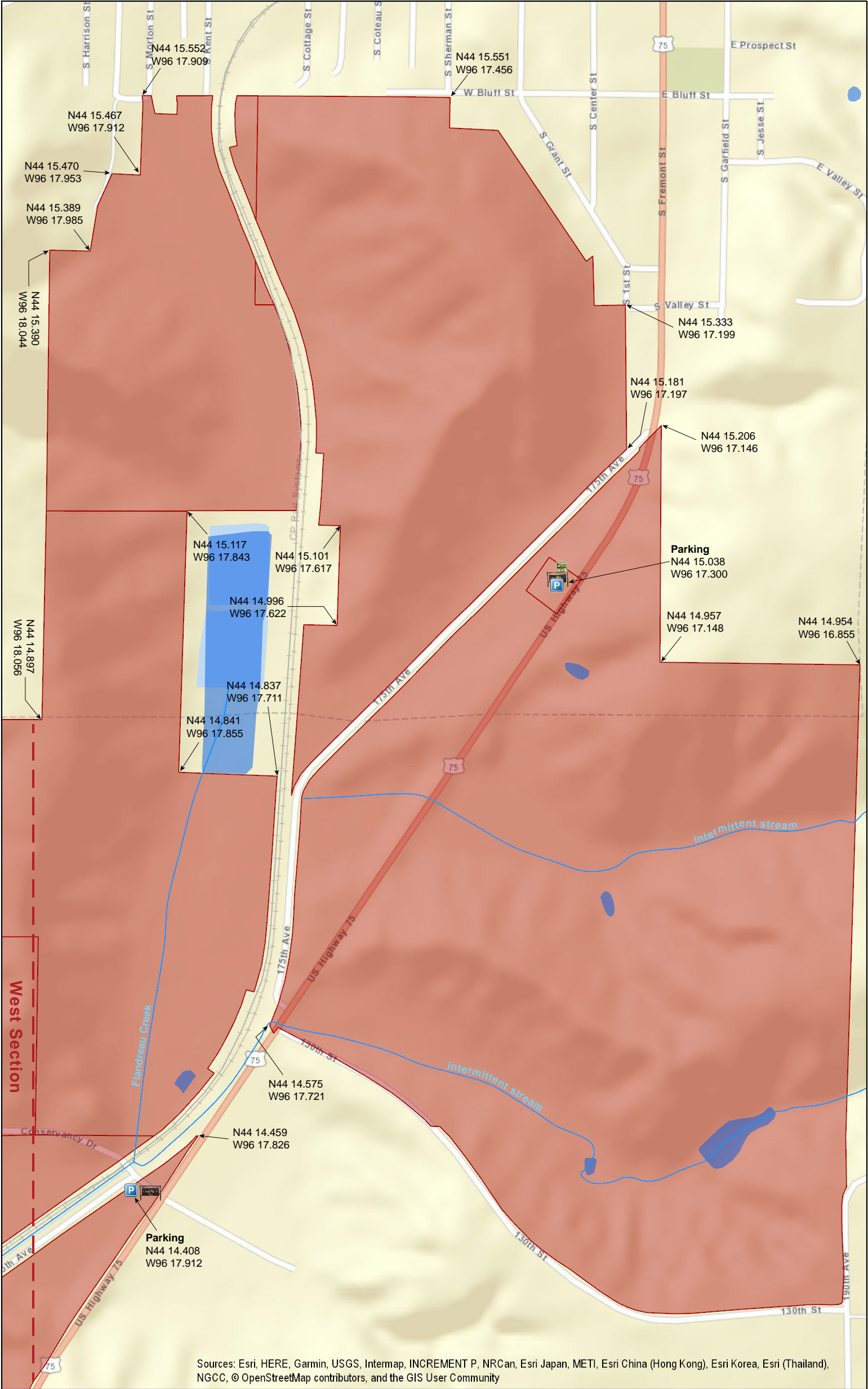
Lincoln County





Hole-in-the-Mountain Prairie  
East Section

Lincoln County

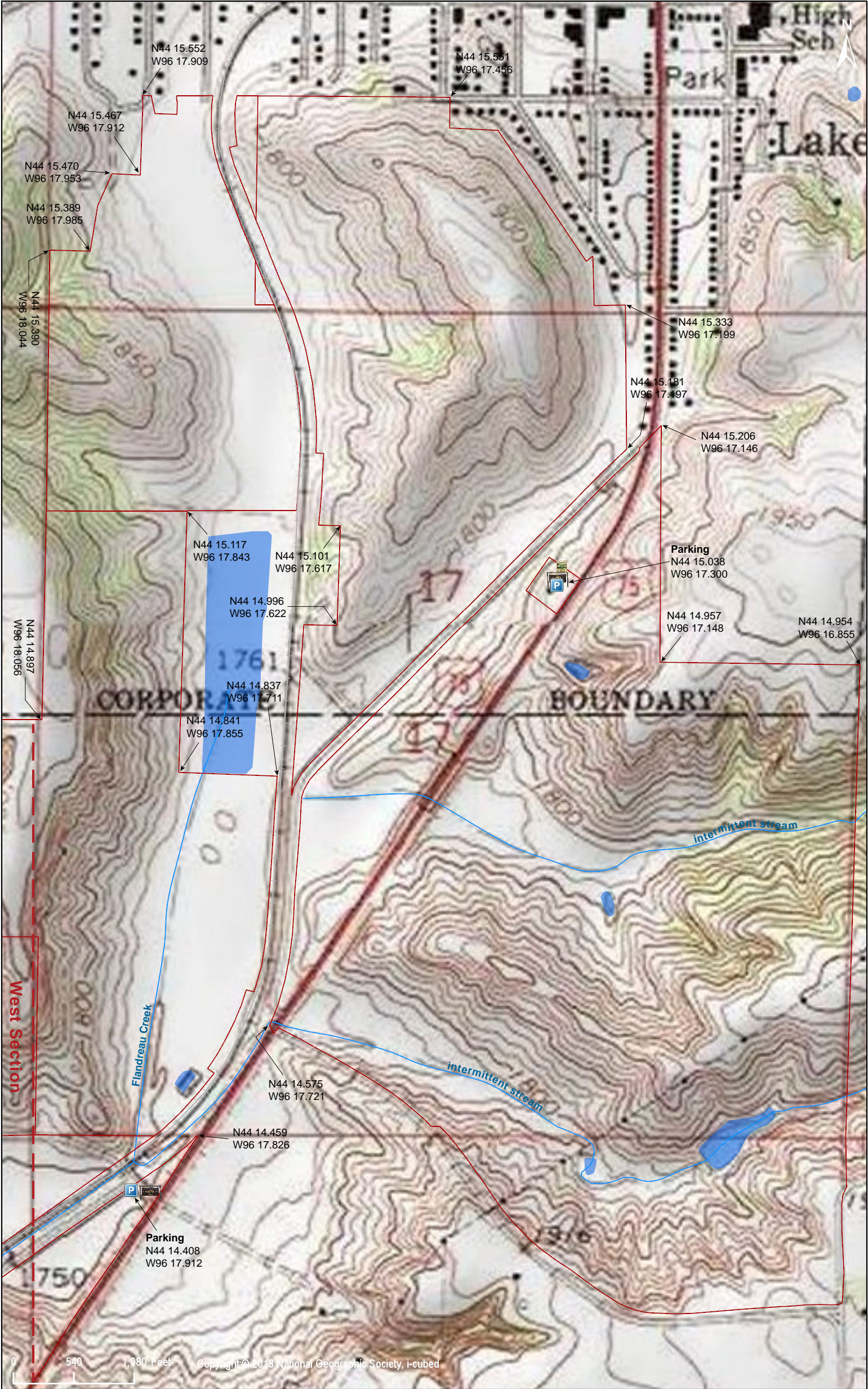


Sources: Esri, HERE, Garmin, USGS, Intermap, INCREMENT P, NRCan, Esri Japan, METI, Esri China (Hong Kong), Esri Korea, Esri (Thailand), NGCC, © OpenStreetMap contributors, and the GIS User Community



Hole-in-the-Mountain Prairie  
East Section

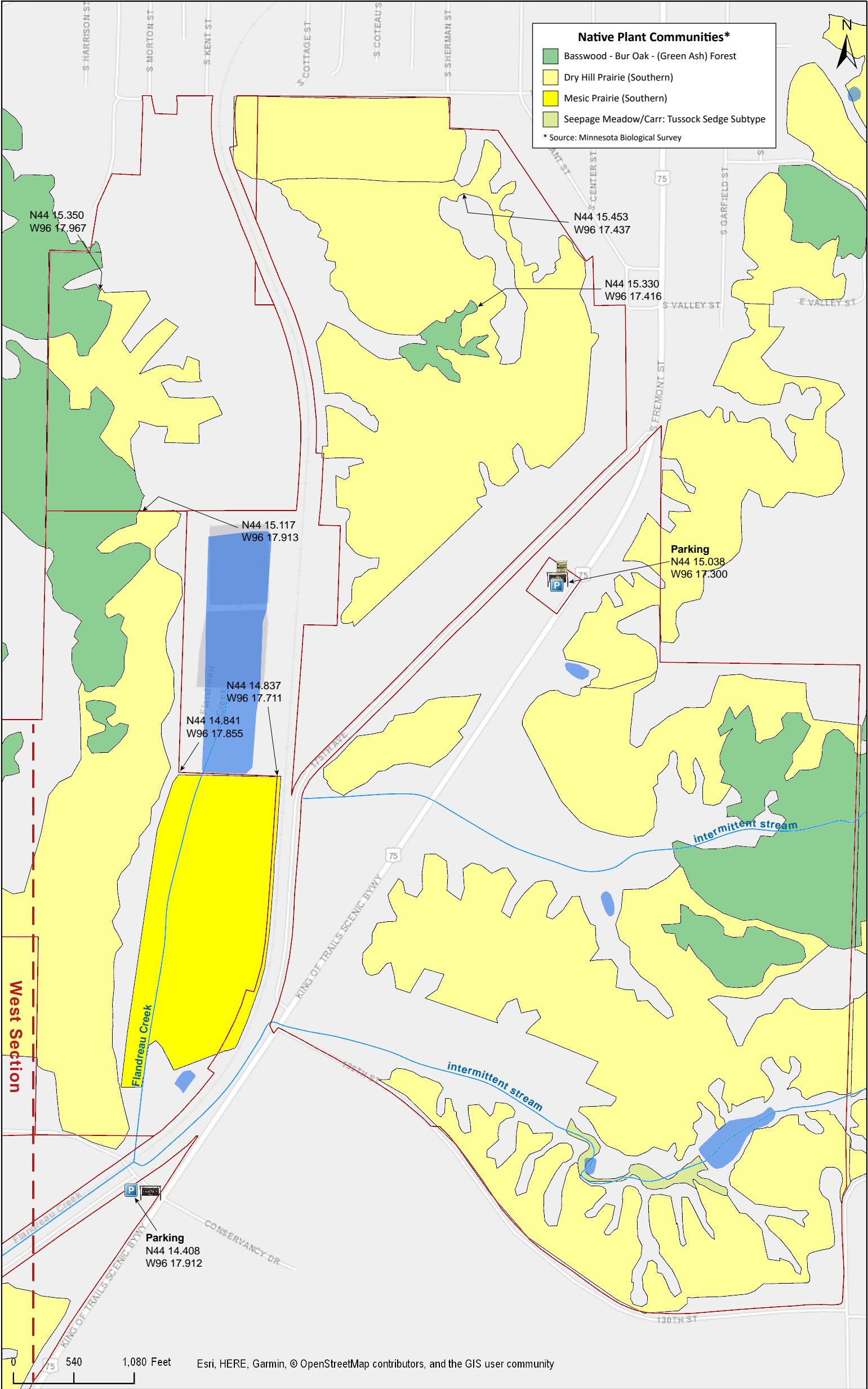
Lincoln County





Hole-in-the-Mountain Prairie  
East Section

Lincoln County

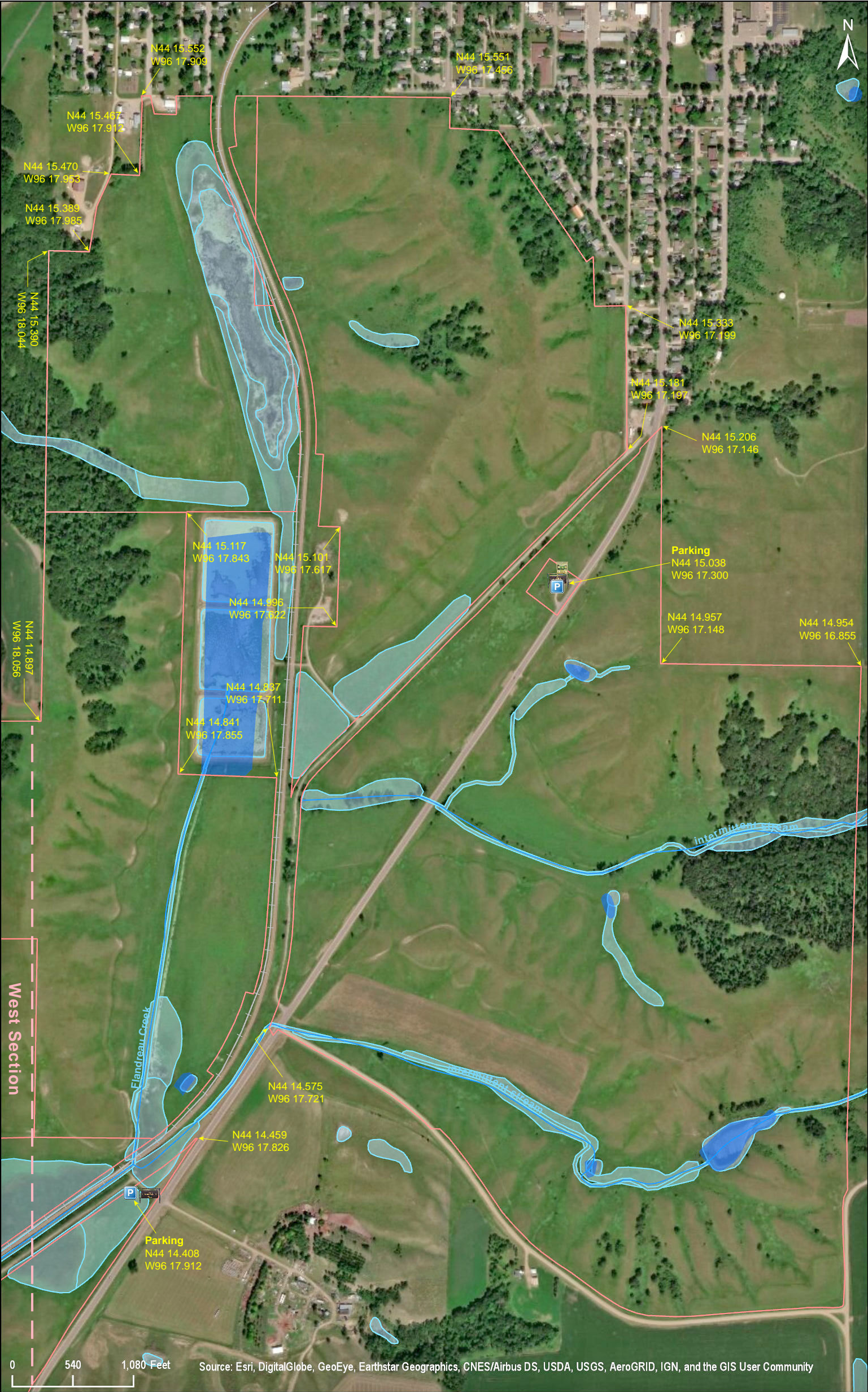




Hole-in-the-Mountain Prairie  
East Section

National Wetlands Inventory

Lincoln County





## **Directions and Notes from The Nature Conservancy**

### **Directions**

From the City of Lake Benton, go south on U.S. 75 for 1.5 miles and park at the turn-out along the west side of the highway.

## **Notes from MinnesotaSeasons.com**

### **Parking**

#### **Conservancy Drive**

N44 14.408, W96 17.912

Conservancy Drive is a single lane dirt road. Pull off the road and park on the south shoulder, leaving room for vehicles to pass.

#### **Turn-out on U.S, Hwy 75**

N44 15.038, W96 17.300

## **DISCLAIMER OF WARRANTIES AND LIMITATIONS OF LIABILITY**

MinnesotaSeasons.com, The Nature Conservancy, U.S. Department of Agriculture, Forest Service, U.S. Fish and Wildlife Service, the state of Minnesota, the Minnesota Department of Natural Resources, and their employees, make no representations or warranties, express or implied, with respect to the use of or reliance on the data provided herewith, regardless of its format or means of transmission. There are no guarantees or representations to the user as to the accuracy, currency, completeness, suitability or reliability of this data for any purpose. THE USER ACCEPTS THE DATA AND/OR SOFTWARE "AS IS" AND ASSUMES ALL RISKS ASSOCIATED WITH ITS USE.

IN NO EVENT SHALL MINNESOTASEASONS.COM, TNC, USDA-FS, USFWS, OR MNDNR BE LIABLE FOR ANY DIRECT, INDIRECT, INCIDENTAL, SPECIAL, EXEMPLARY, OR CONSEQUENTIAL DAMAGES (INCLUDING, BUT NOT LIMITED TO, PROCUREMENT OF SUBSTITUTE GOODS OR SERVICES; LOSS OF USE, DATA, OR PROFITS; OR BUSINESS INTERRUPTION) HOWEVER CAUSED AND ON ANY THEORY OF LIABILITY, WHETHER IN CONTRACT, STRICT LIABILITY, OR TORT (INCLUDING NEGLIGENCE OR OTHERS) ARISING IN ANY WAY OUT OF THE USE OF THIS DATA, EVEN IF ADVISED OF THE POSSIBILITY OF SUCH DAMAGE OR FOR ANY CLAIM BY ANY OTHER PARTY.

Your use of the data is acceptance on your part of the terms and conditions set forth herein.