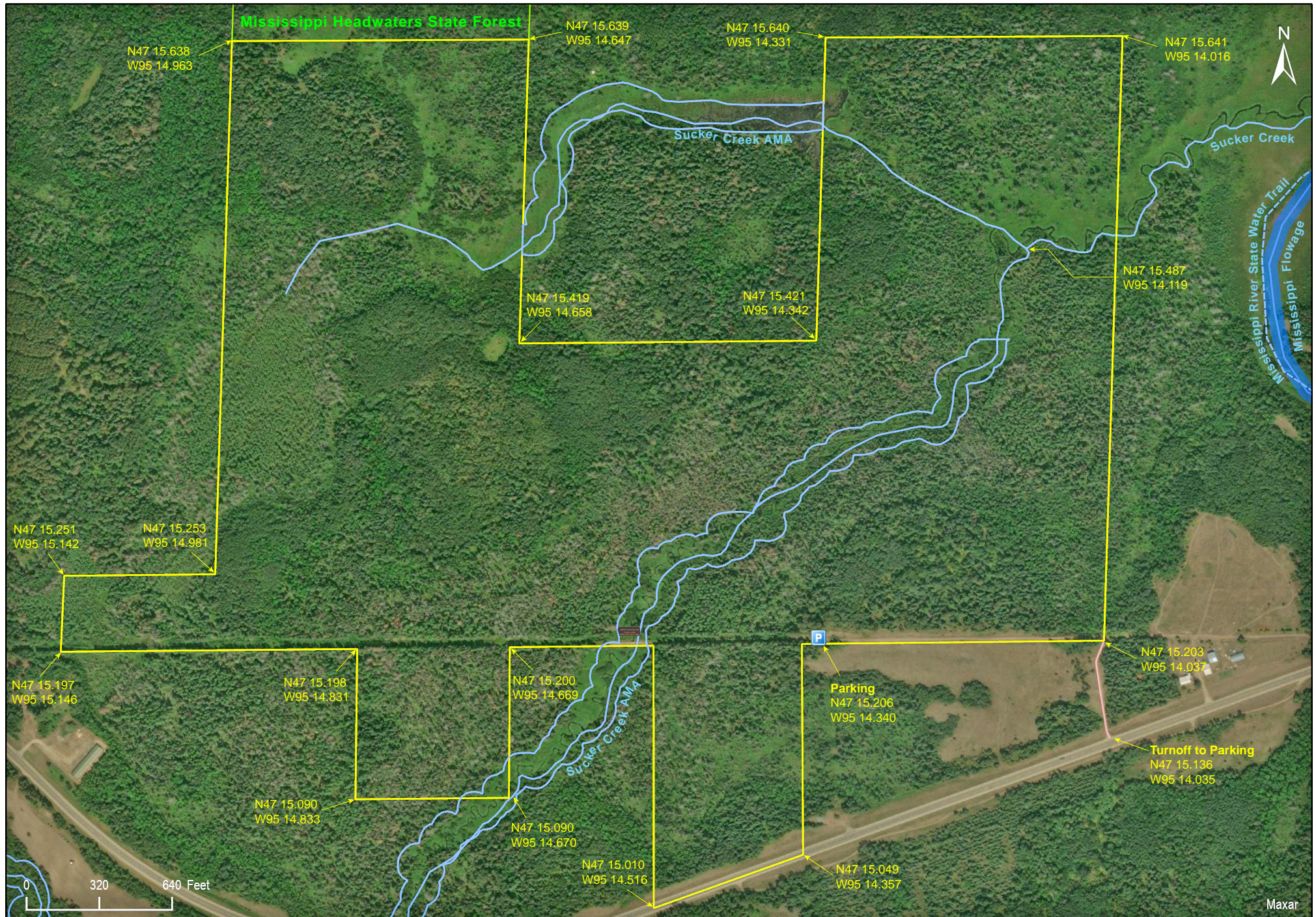


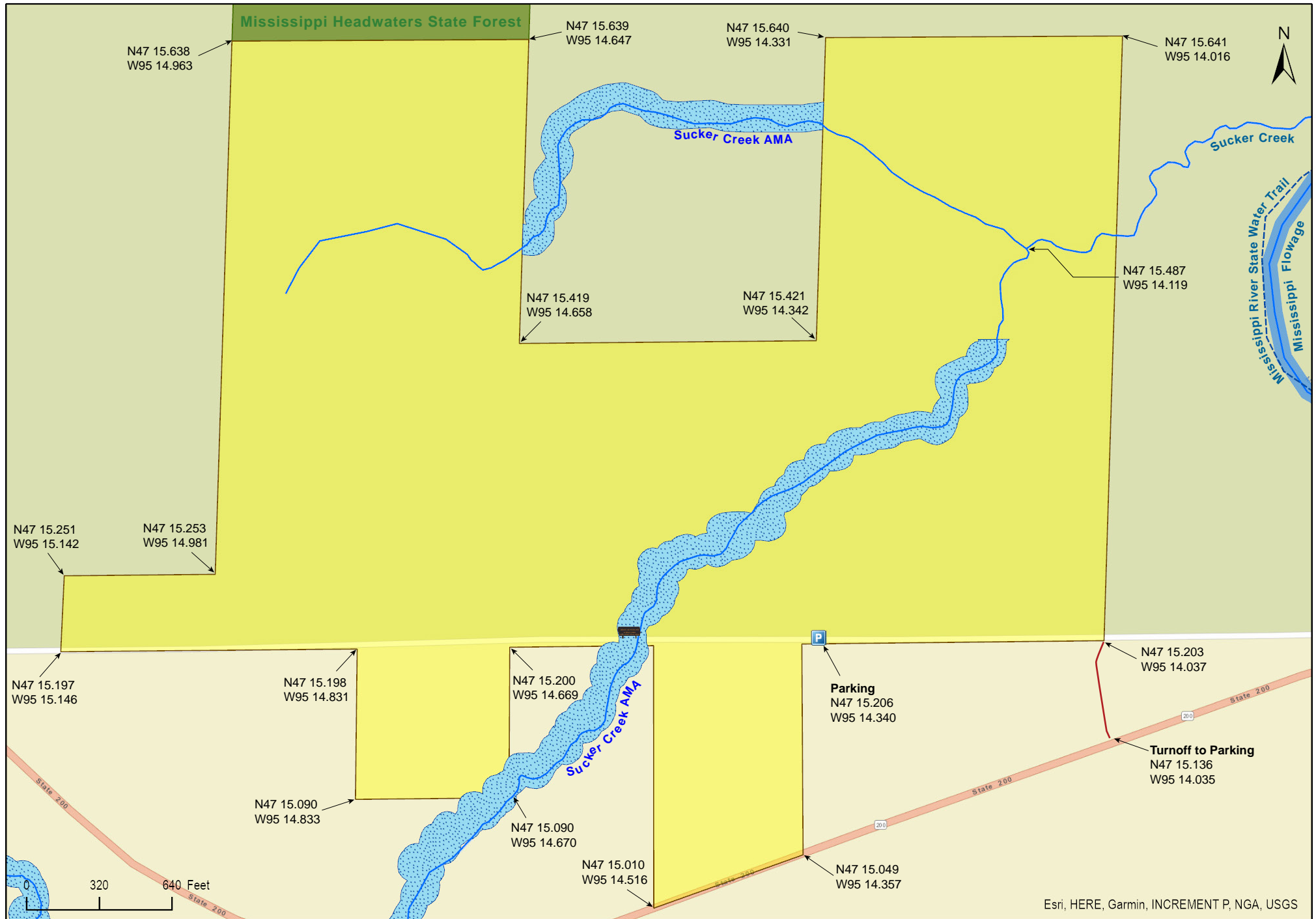
Iron Springs Bog SNA

Clearwater County



Iron Springs Bog SNA

Clearwater County



Esri, HERE, Garmin, INCREMENT P, NGA, USGS

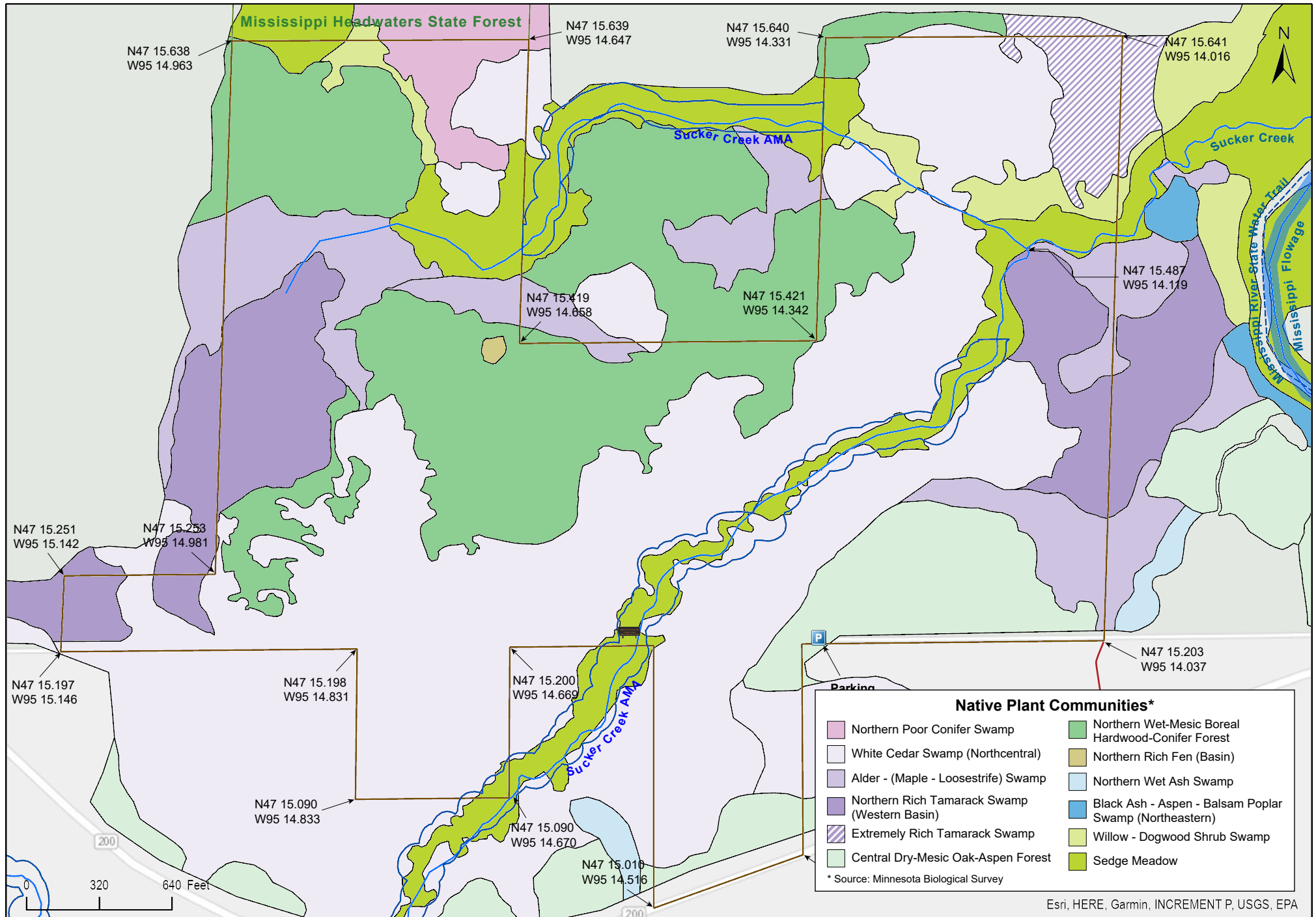
Iron Springs Bog SNA

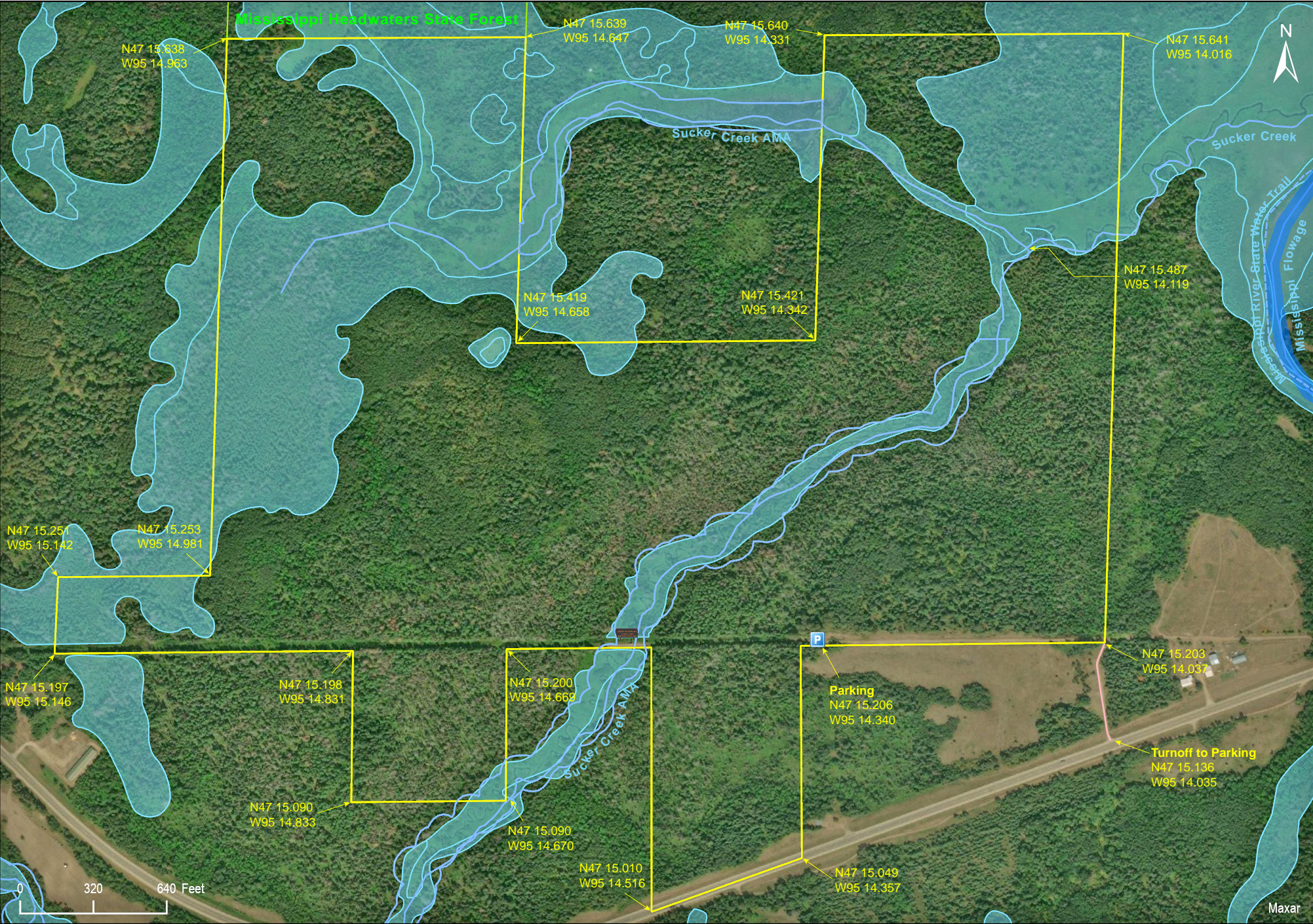
Clearwater County



Iron Springs Bog SNA

Clearwater County





Iron Springs Bog SNA

Directions and Notes from Minnesota DNR

Directions

From Park Rapids 20 miles N on US Hwy 71, then 7 miles NW on MN Hwy 200, (1 mile W of the entrance to Itasca State Park), then N and W 0.3 mile on gravel road. Park on N shoulder.

Lat/Lon

47.253431, -95.239002

This site has no maintained trails or other recreational facilities. This site is within Mississippi Headwaters State Forest.

Notes from MinnesotaSeasons.com

Getting There

To get to the site from MN Hwy 200, turn north onto the unmarked two-track road at the location shown above (Turnoff to Parking). Proceed north for 150 yards. Turn left (west) and drive 400 yards (0.23 miles). Park on the shoulder.

Turnoff to Parking

N47 15.136, W95 14.035

Parking

N47 15.206, W95 14.340

DISCLAIMER OF WARRANTIES AND LIMITATIONS OF LIABILITY

MinnesotaSeasons.com, The Nature Conservancy, U.S. Department of Agriculture, Forest Service, U.S. Fish and Wildlife Service, the state of Minnesota, the Minnesota Department of Natural Resources, and their employees, make no representations or warranties, express or implied, with respect to the use of or reliance on the data provided herewith, regardless of its format or means of transmission. There are no guarantees or representations to the user as to the accuracy, currency, completeness, suitability or reliability of this data for any purpose. THE USER ACCEPTS THE DATA AND/OR SOFTWARE "AS IS" AND ASSUMES ALL RISKS ASSOCIATED WITH ITS USE.

IN NO EVENT SHALL MINNESOTASEASONS.COM, TNC, USDA-FS, USFWS, OR MNDNR BE LIABLE FOR ANY DIRECT, INDIRECT, INCIDENTAL, SPECIAL, EXEMPLARY, OR CONSEQUENTIAL DAMAGES (INCLUDING, BUT NOT LIMITED TO, PROCUREMENT OF SUBSTITUTE GOODS OR SERVICES; LOSS OF USE, DATA, OR PROFITS; OR BUSINESS INTERRUPTION) HOWEVER CAUSED AND ON ANY THEORY OF LIABILITY, WHETHER IN CONTRACT, STRICT LIABILITY, OR TORT (INCLUDING NEGLIGENCE OR OTHERS) ARISING IN ANY WAY OUT OF THE USE OF THIS DATA, EVEN IF ADVISED OF THE POSSIBILITY OF SUCH DAMAGE OR FOR ANY CLAIM BY ANY OTHER PARTY.

Your use of the data is acceptance on your part of the terms and conditions set forth herein.