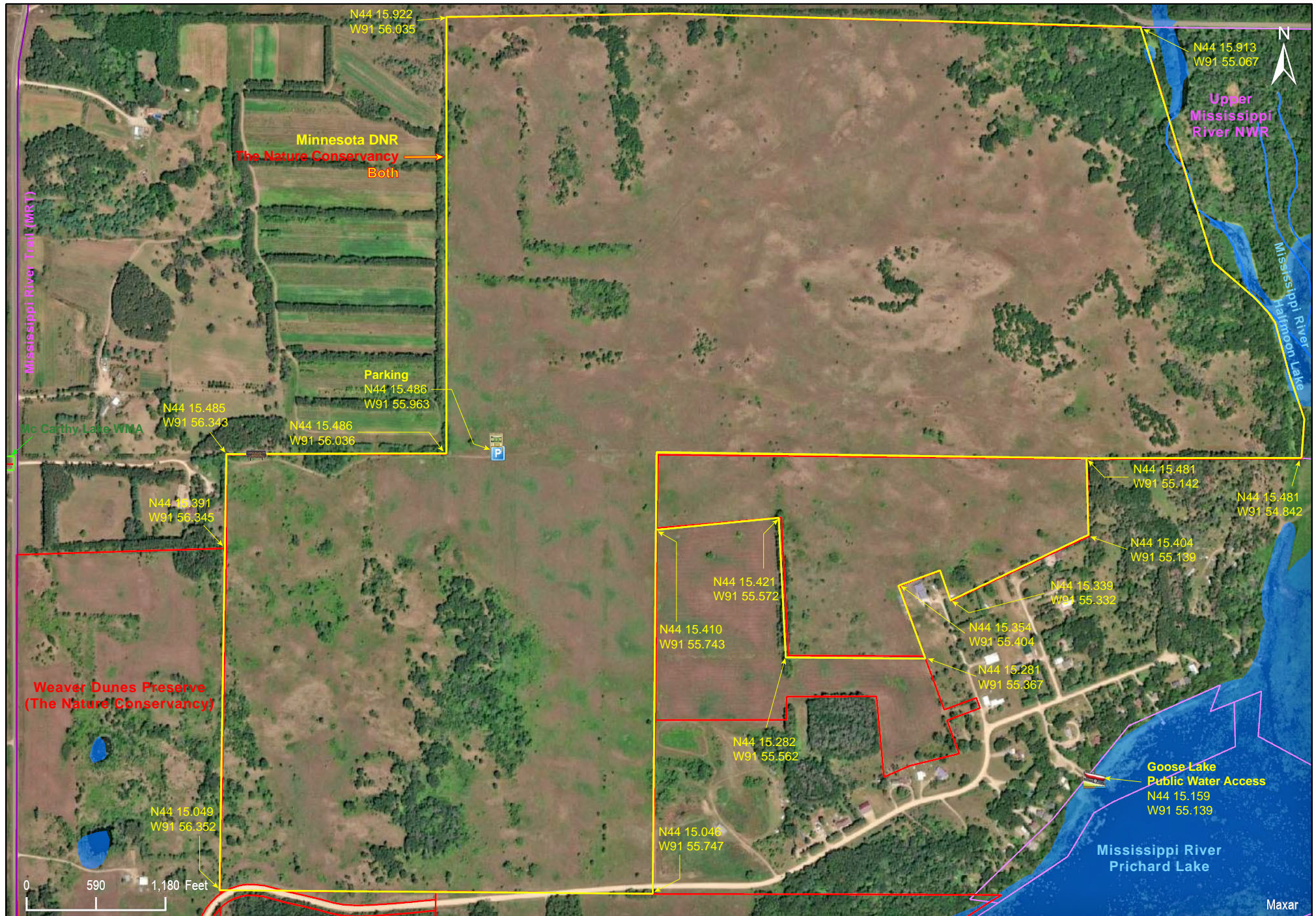


Kellogg-Weaver Dunes SNA Weaver Dunes Unit

Wabasha County



Wabasha County



Based on Minnesota DNR data dated 9/24/2021 and The Nature Conservancy data dated 10/14/2021

Kellogg-Weaver Dunes SNA Weaver Dunes Unit

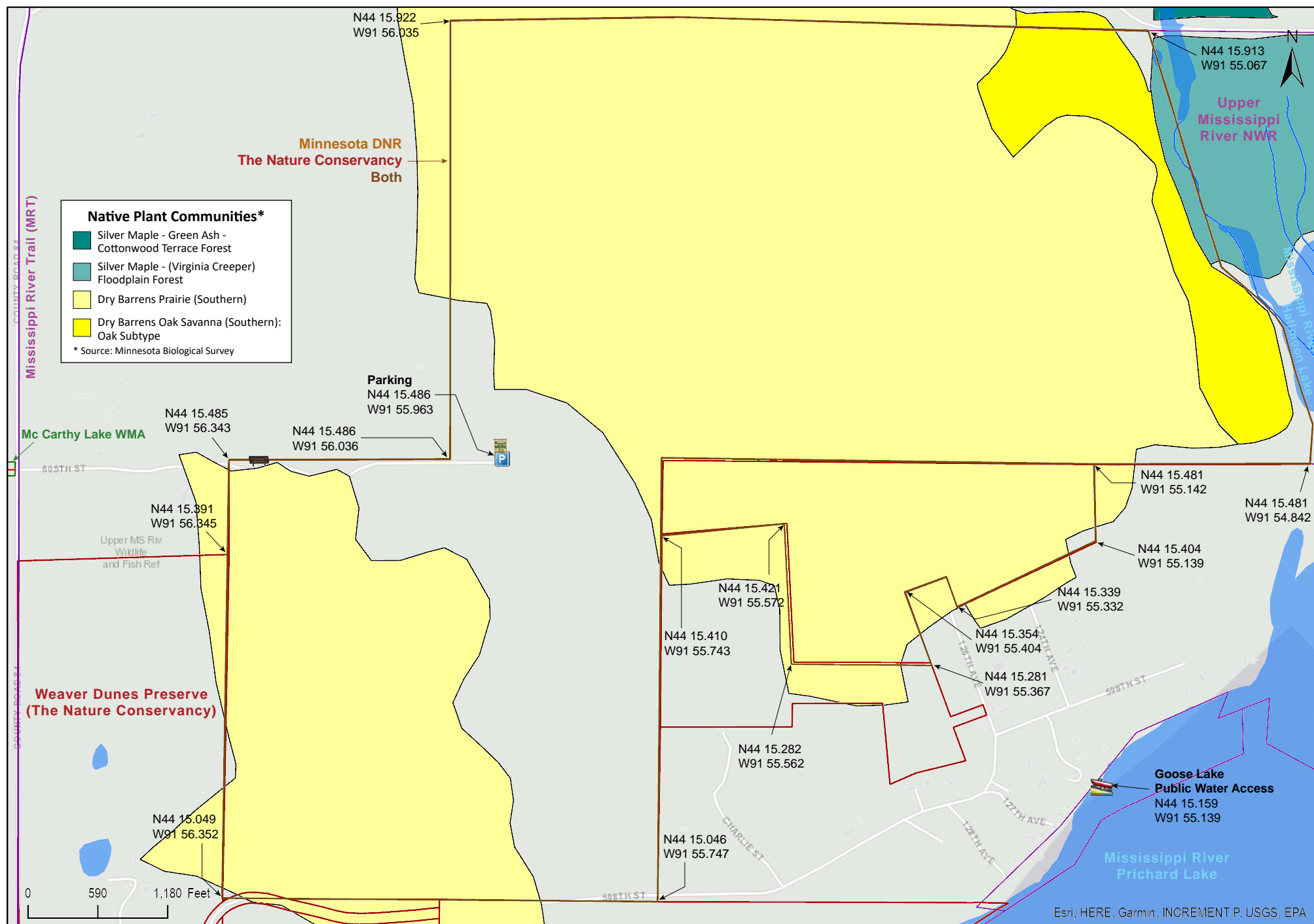
Wabasha County

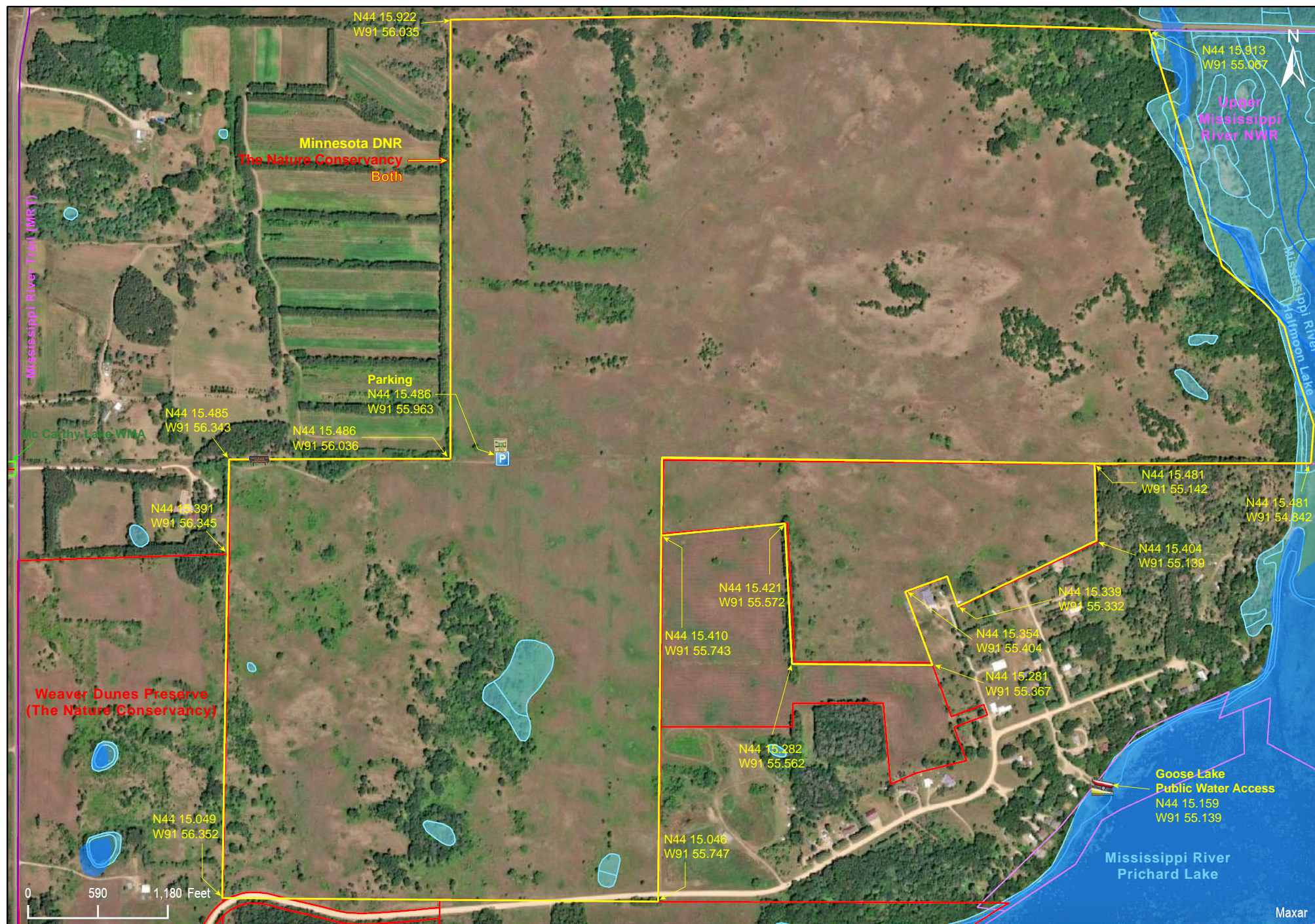


Kellogg-Weaver Dunes SNA

Weaver Dunes Unit

Wabasha County



Kellogg-Weaver Dunes SNA
Weaver Dunes Unit

Kellogg-Weaver Dunes SNA

Weaver Dunes Unit

Directions and Notes from Minnesota DNR

Directions

From Kellogg 5.5 miles E and S on Co Rd 84. E on Twp Rd 141 about 0.2 mile, stay left at fork and continue about 0.375 mile to parking at end of field road.

Lat/Lon:

4.2581, -91.932724

This site has no maintained trails or other recreational facilities. This site is in an Audubon Important Bird Area and Watchable Wildlife Viewing Area. McCarthy Lake WMA and the Upper Mississippi Wildlife & Fish Refuge are adjacent to this site.

Directions and Notes from The Nature Conservancy

Directions

To reach the Weaver Dunes Preserve SNA from the north:

- Travel south on Highway 61 to Kellogg, MN turn left into Kellogg at the blue topped water tower.
- At the stop sign, turn right to get on Dodge Street, going south
- Follow the signs to get onto County Road 84, going south
- Travel approx. 6 miles south of Kellogg to blue address tag 60042. Turn left into the Conservancy preserve.

To reach the Weaver Dunes Preserve SNA from the south:

- Travel north on Highway 61 about 2 miles north of the town of Weaver
- Between mile markers 48 and 49, County Road 84 will intersect on the right
- Turn right onto County Road 84, winding north through wetlands
- Travel approx. 3 miles to blue address tag 60042. Turn right into the Conservancy preserve.

Notes from MinnesotaSeasons.com

Parking

N44 15.486, W91 55.963

DISCLAIMER OF WARRANTIES AND LIMITATIONS OF LIABILITY

MinnesotaSeasons.com, The Nature Conservancy, U.S. Department of Agriculture, Forest Service, U.S. Fish and Wildlife Service, the state of Minnesota, the Minnesota Department of Natural Resources, and their employees, make no representations or warranties, express or implied, with respect to the use of or reliance on the data provided herewith, regardless of its format or means of transmission. There are no guarantees or representations to the user as to the accuracy, currency, completeness, suitability or reliability of this data for any purpose. THE USER ACCEPTS THE DATA AND/OR SOFTWARE "AS IS" AND ASSUMES ALL RISKS ASSOCIATED WITH ITS USE.

IN NO EVENT SHALL MINNESOTASEASONS.COM, TNC, USDA-FS, USFWS, OR MNDNR BE LIABLE FOR ANY DIRECT, INDIRECT, INCIDENTAL, SPECIAL, EXEMPLARY, OR CONSEQUENTIAL DAMAGES (INCLUDING, BUT NOT LIMITED TO, PROCUREMENT OF SUBSTITUTE GOODS OR SERVICES; LOSS OF USE, DATA, OR PROFITS; OR BUSINESS INTERRUPTION) HOWEVER CAUSED AND ON ANY THEORY OF LIABILITY, WHETHER IN CONTRACT, STRICT LIABILITY, OR TORT (INCLUDING NEGLIGENCE OR OTHERS) ARISING IN ANY WAY OUT OF THE USE OF THIS DATA, EVEN IF ADVISED OF THE POSSIBILITY OF SUCH DAMAGE OR FOR ANY CLAIM BY ANY OTHER PARTY.

Your use of the data is acceptance on your part of the terms and conditions set forth herein.