

King's and Queen's Bluff SNA  
King's Bluff

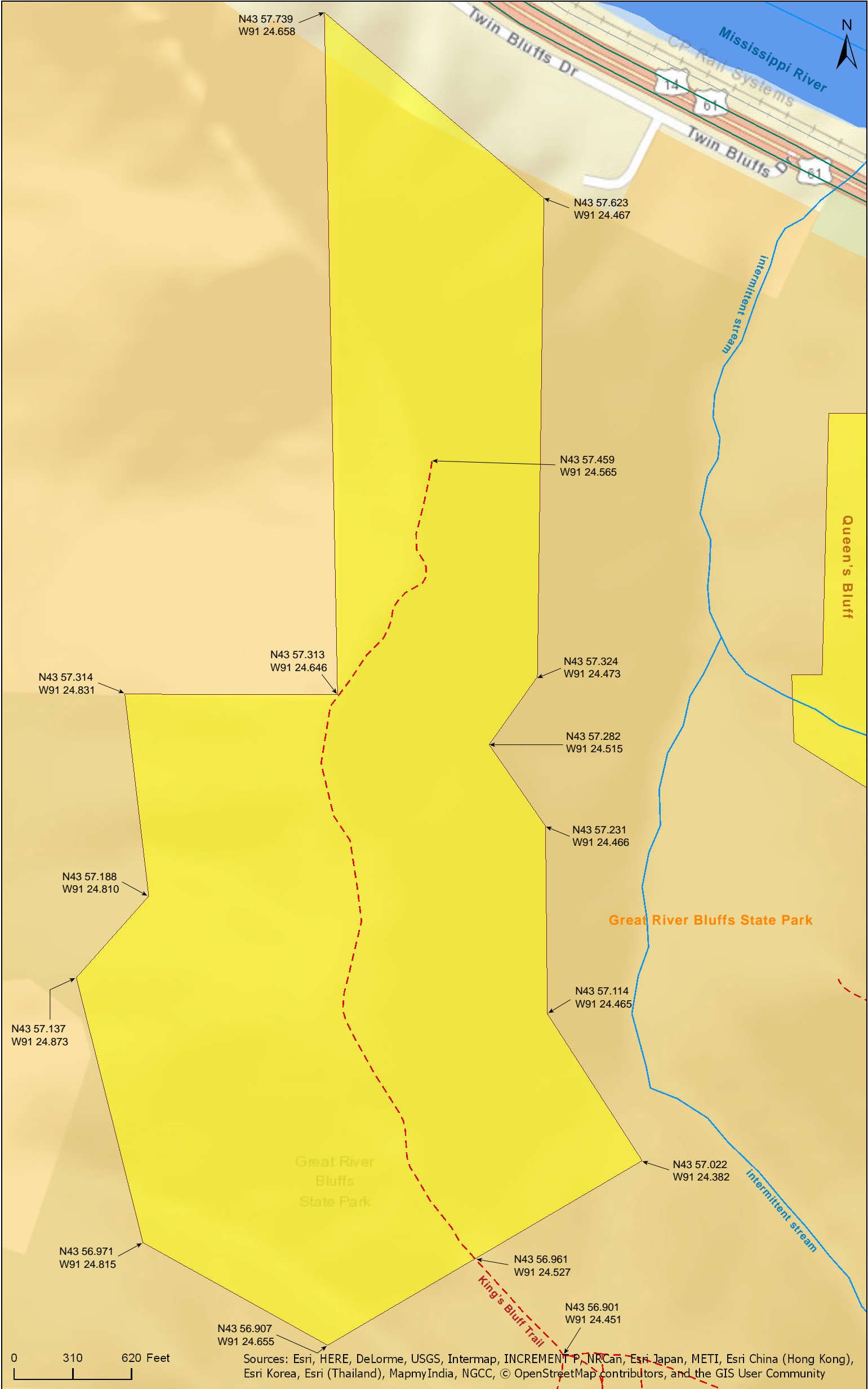
Winona County





King's and Queen's Bluff SNA  
King's Bluff

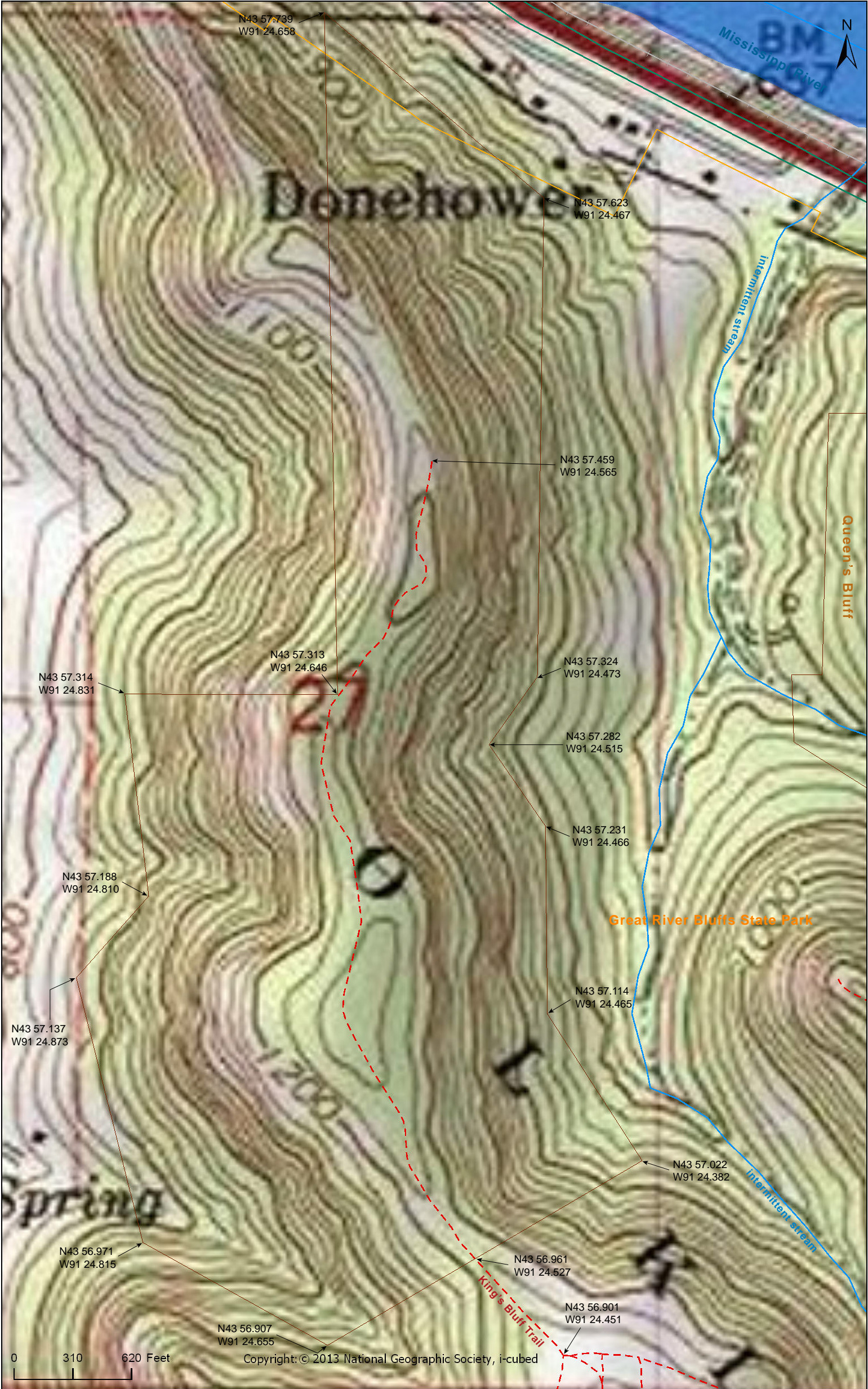
Winona County





King's and Queen's Bluff SNA  
King's Bluff

Winona County

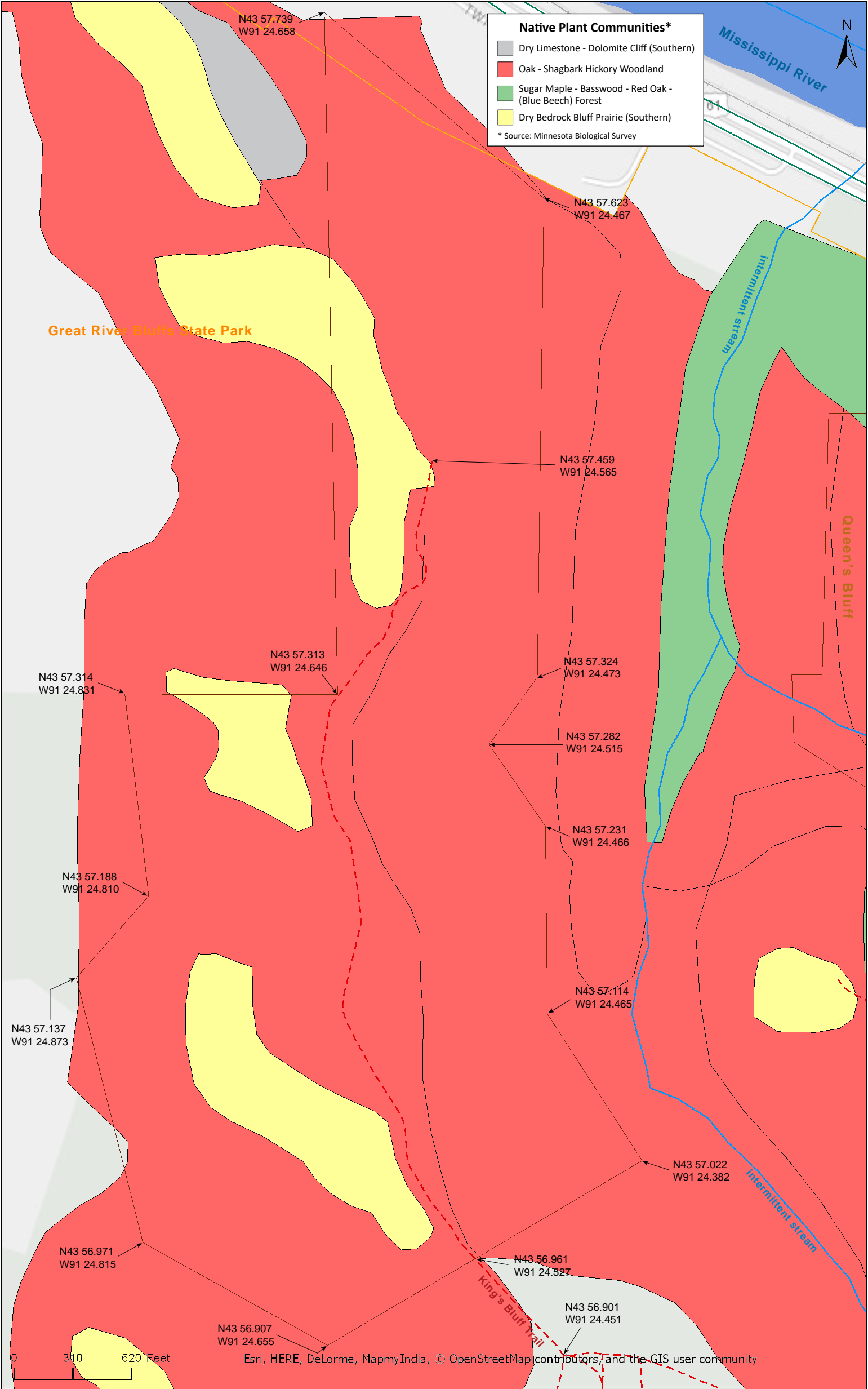




# King's and Queen's Bluff SNA

## King's Bluff

Winona County





King's and Queen's Bluff SNA  
King's Bluff

National Wetlands Inventory

Winona County





# King's and Queen's Bluff SNA

## King's Bluff

### **Directions and Notes from Minnesota DNR**

**Directions:** From Winona 20 miles SE on US Hwy 61, then 4 miles S on Co Rd 3, then E into Great River Bluffs State Park. Park in lot 0.4 mile past office. Hike trail E and N to site.

**Lat/Lon:** 43.944468, -91.402952

Sanctuary (Queen's Bluff open by permit only). This site is in a Watchable Wildlife Viewing Area. An interpretive trail passes through King's Bluff. Recreational facilities available in Great River Bluffs State Park.

### **Notes from MinnesotaSeasons.com**

#### **Parking**

King's Bluff Parking  
N43 56.668, W91 24.177

A trail leads from a parking area to King's Bluff.

### **DISCLAIMER OF WARRANTIES AND LIMITATIONS OF LIABILITY**

MinnesotaSeasons.com, The Nature Conservancy, U.S. Department of Agriculture, Forest Service, U.S. Fish and Wildlife Service, the state of Minnesota, the Minnesota Department of Natural Resources, and their employees, make no representations or warranties, express or implied, with respect to the use of or reliance on the data provided herewith, regardless of its format or means of transmission. There are no guarantees or representations to the user as to the accuracy, currency, completeness, suitability or reliability of this data for any purpose. THE USER ACCEPTS THE DATA AND/OR SOFTWARE "AS IS" AND ASSUMES ALL RISKS ASSOCIATED WITH ITS USE.

IN NO EVENT SHALL MINNESOTASEASONS.COM, TNC, USDA-FS, USFWS, OR MNDNR BE LIABLE FOR ANY DIRECT, INDIRECT, INCIDENTAL, SPECIAL, EXEMPLARY, OR CONSEQUENTIAL DAMAGES (INCLUDING, BUT NOT LIMITED TO, PROCUREMENT OF SUBSTITUTE GOODS OR SERVICES; LOSS OF USE, DATA, OR PROFITS; OR BUSINESS INTERRUPTION) HOWEVER CAUSED AND ON ANY THEORY OF LIABILITY, WHETHER IN CONTRACT, STRICT LIABILITY, OR TORT (INCLUDING NEGLIGENCE OR OTHERS) ARISING IN ANY WAY OUT OF THE USE OF THIS DATA, EVEN IF ADVISED OF THE POSSIBILITY OF SUCH DAMAGE OR FOR ANY CLAIM BY ANY OTHER PARTY.

Your use of the data is acceptance on your part of the terms and conditions set forth herein.