

Lake Alexander Preserve  
East Unit

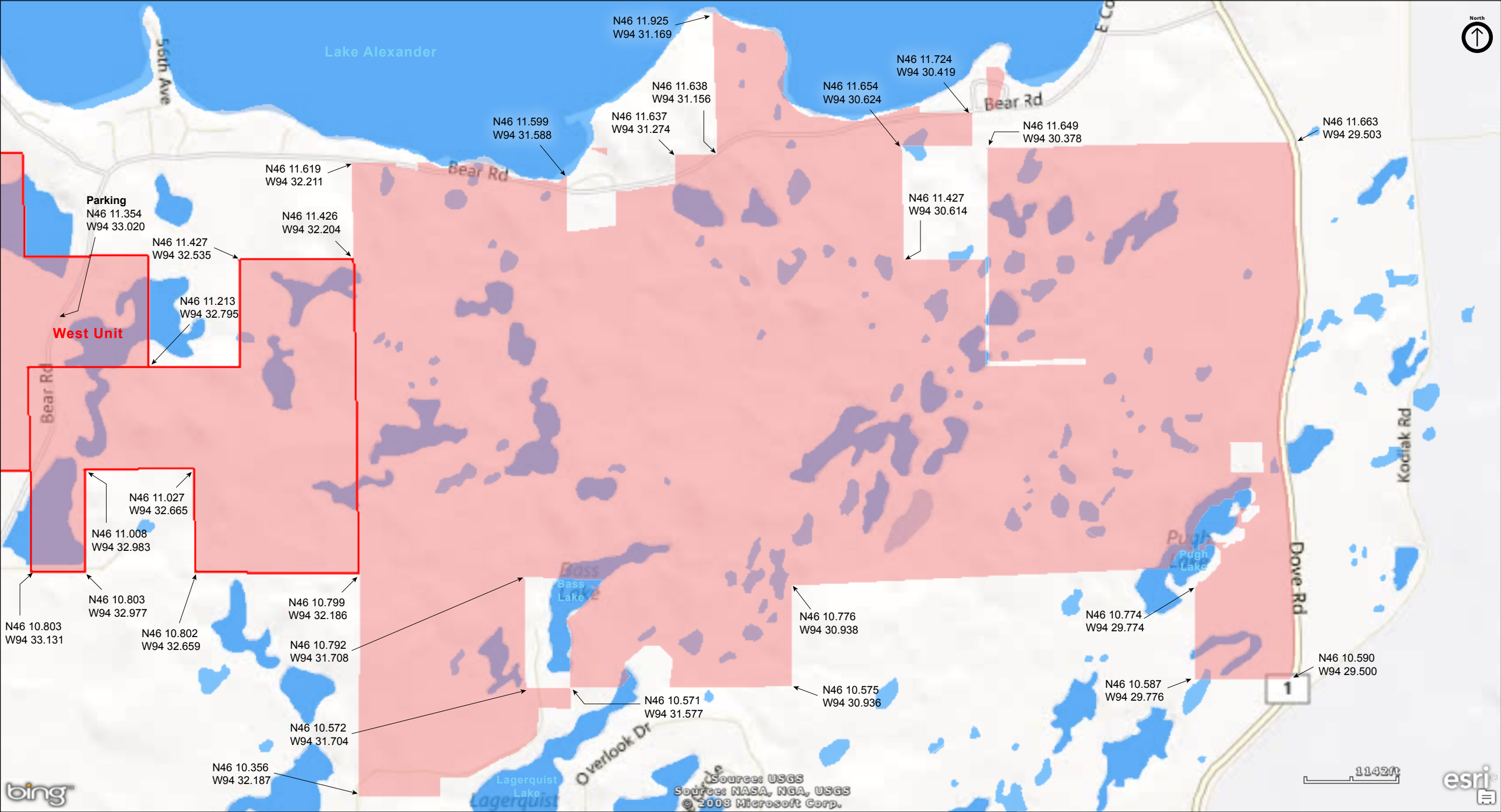
Morrison County





Lake Alexander Preserve  
East Unit

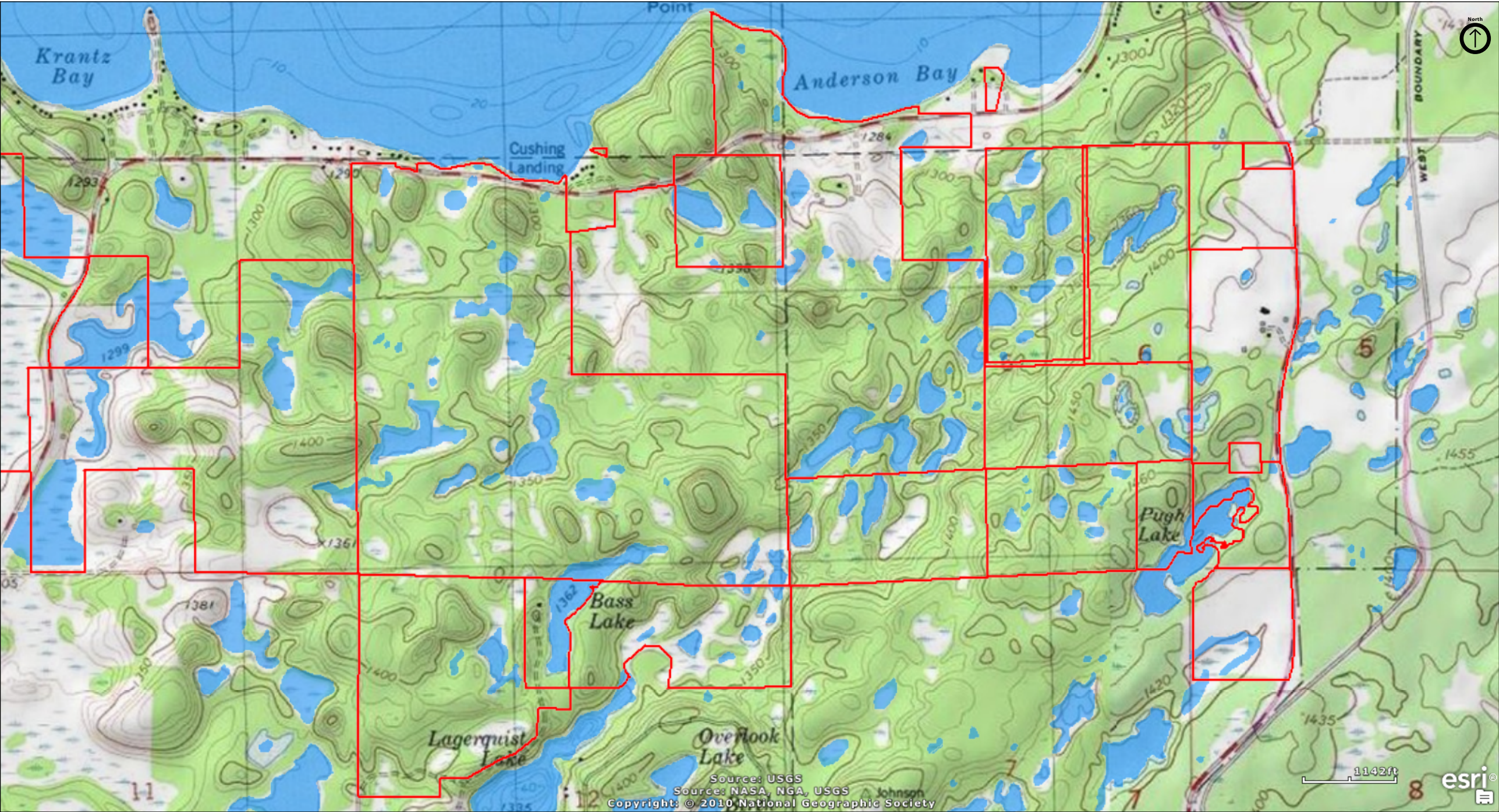
Morrison County





Lake Alexander Preserve  
East Unit

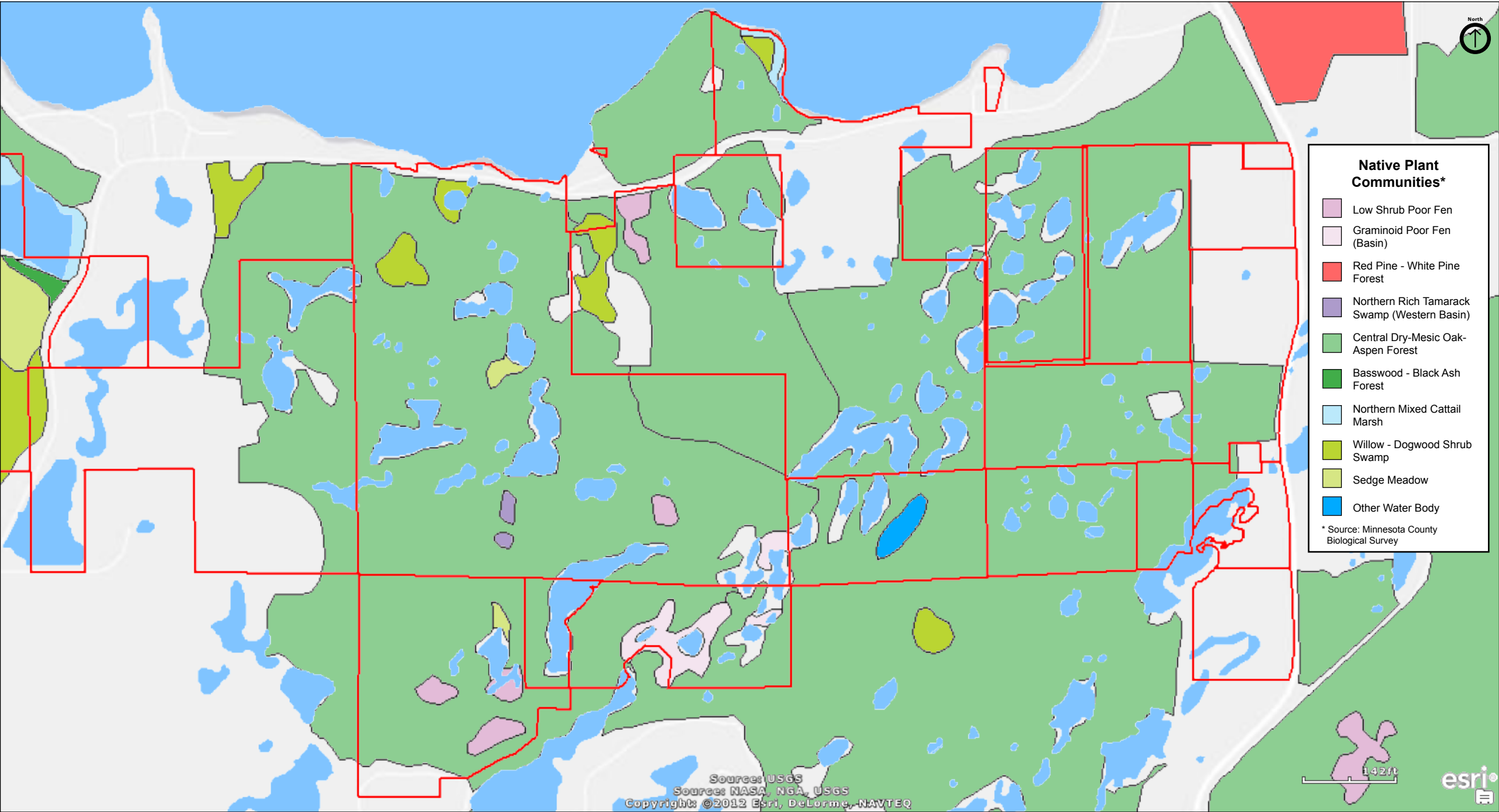
Morrison County





Lake Alexander Preserve  
East Unit

Morrison County





# Lake Alexander Preserve

## East Unit

### Directions and Notes from The Nature Conservancy

From Little Falls:

- Take U.S. Highway 10 north for 15 miles until you reach Cushing
- At Cushing, drive north on County Road 5 for five miles to the preserve site
- Park along the side of any of the gated road approaches

### Notes from MinnesotaSeasons.com

#### **Parking**

N46 11.354, W94 33.020

#### **Unfragmented South Unit**

Since 2008, The Nature Conservancy has enlarged this preserve by acquiring 77 acres and obtaining easements on 570 acres of land adjacent to it. This includes an easement on a 231.5 acre section that connects the east and west units of the preserve. The new additions expanded the size of the preserve from 1,631 acres in 2008 to its current size of 2,278 acres (2013), including the unconnected, 331-acre north unit.

### **DISCLAIMER OF WARRANTIES AND LIMITATIONS OF LIABILITY**

MinnesotaSeasons.com, The Nature Conservancy, U.S. Department of Agriculture, Forest Service, U.S. Fish and Wildlife Service, the state of Minnesota, the Minnesota Department of Natural Resources, and their employees, make no representations or warranties, express or implied, with respect to the use of or reliance on the data provided herewith, regardless of its format or means of transmission. There are no guarantees or representations to the user as to the accuracy, currency, completeness, suitability or reliability of this data for any purpose. THE USER ACCEPTS THE DATA AND/OR SOFTWARE "AS IS" AND ASSUMES ALL RISKS ASSOCIATED WITH ITS USE.

IN NO EVENT SHALL MINNESOTASEASONS.COM, TNC, USDA-FS, USFWS, OR MNDNR BE LIABLE FOR ANY DIRECT, INDIRECT, INCIDENTAL, SPECIAL, EXEMPLARY, OR CONSEQUENTIAL DAMAGES (INCLUDING, BUT NOT LIMITED TO, PROCUREMENT OF SUBSTITUTE GOODS OR SERVICES; LOSS OF USE, DATA, OR PROFITS; OR BUSINESS INTERRUPTION) HOWEVER CAUSED AND ON ANY THEORY OF LIABILITY, WHETHER IN CONTRACT, STRICT LIABILITY, OR TORT (INCLUDING NEGLIGENCE OR OTHERS) ARISING IN ANY WAY OUT OF THE USE OF THIS DATA, EVEN IF ADVISED OF THE POSSIBILITY OF SUCH DAMAGE OR FOR ANY CLAIM BY ANY OTHER PARTY.

Your use of the data is acceptance on your part of the terms and conditions set forth herein.