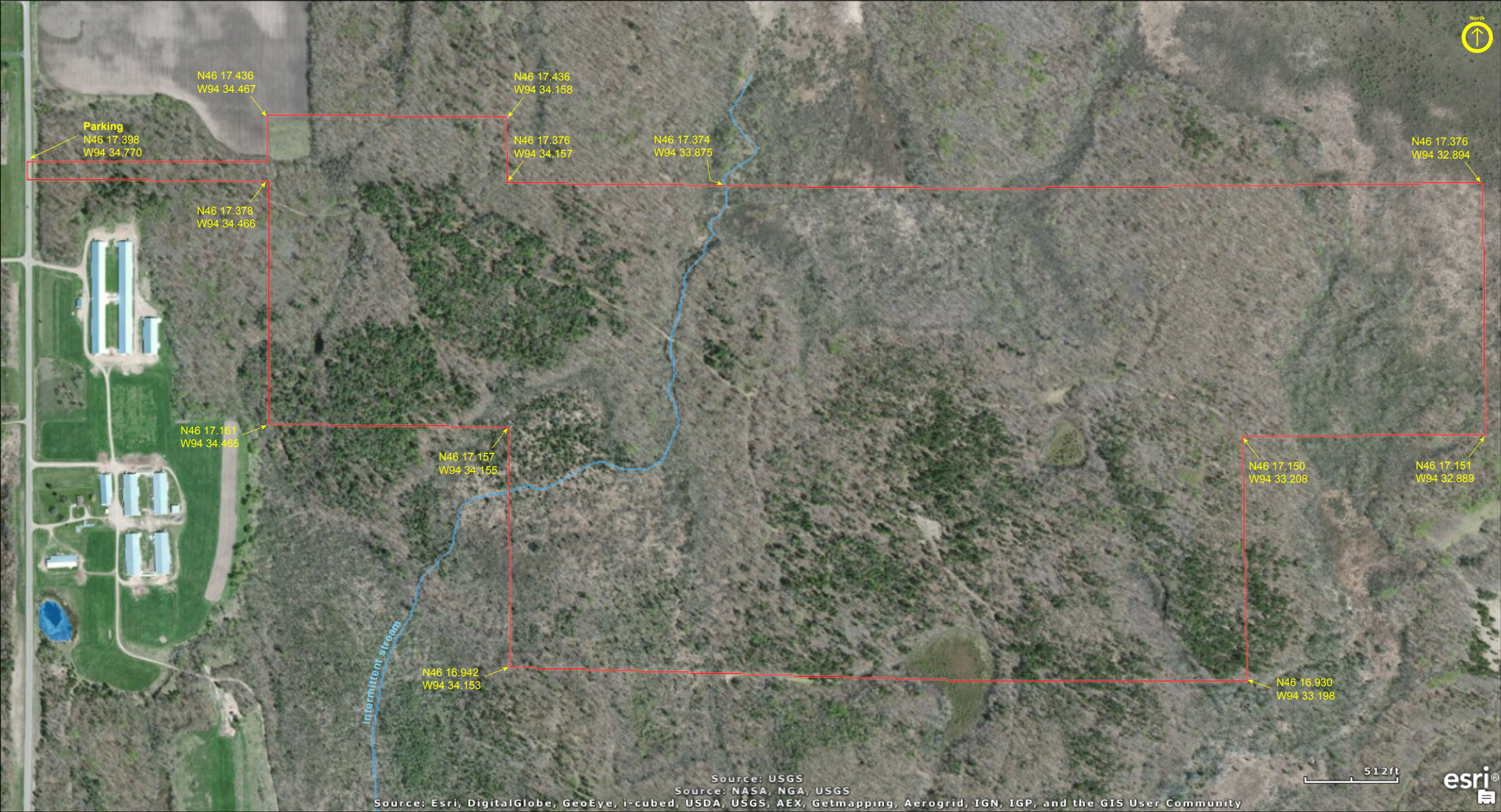


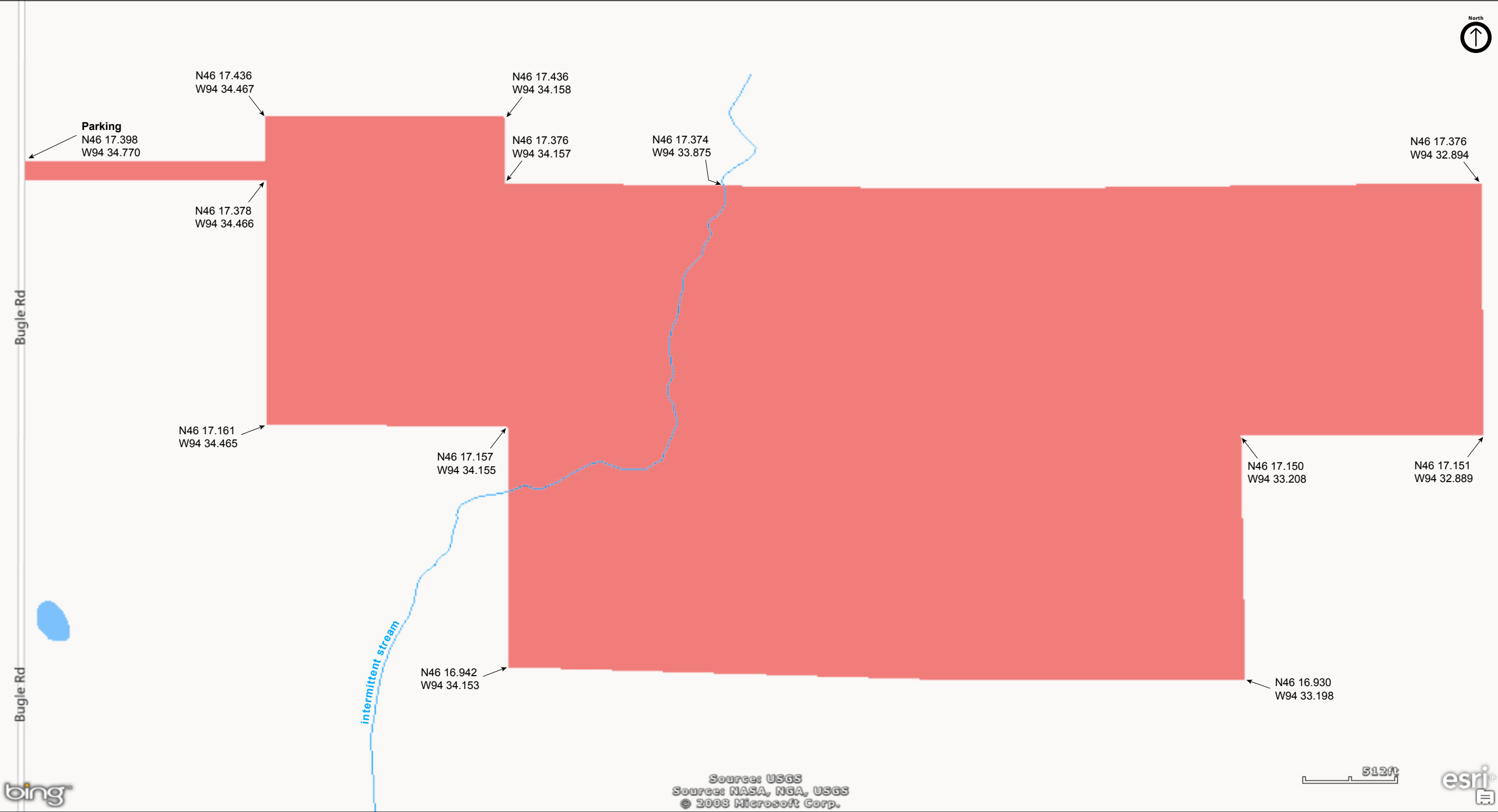
Lake Alexander Preserve
North Unit

Morrison County



Lake Alexander Preserve
North Unit

Morrison County



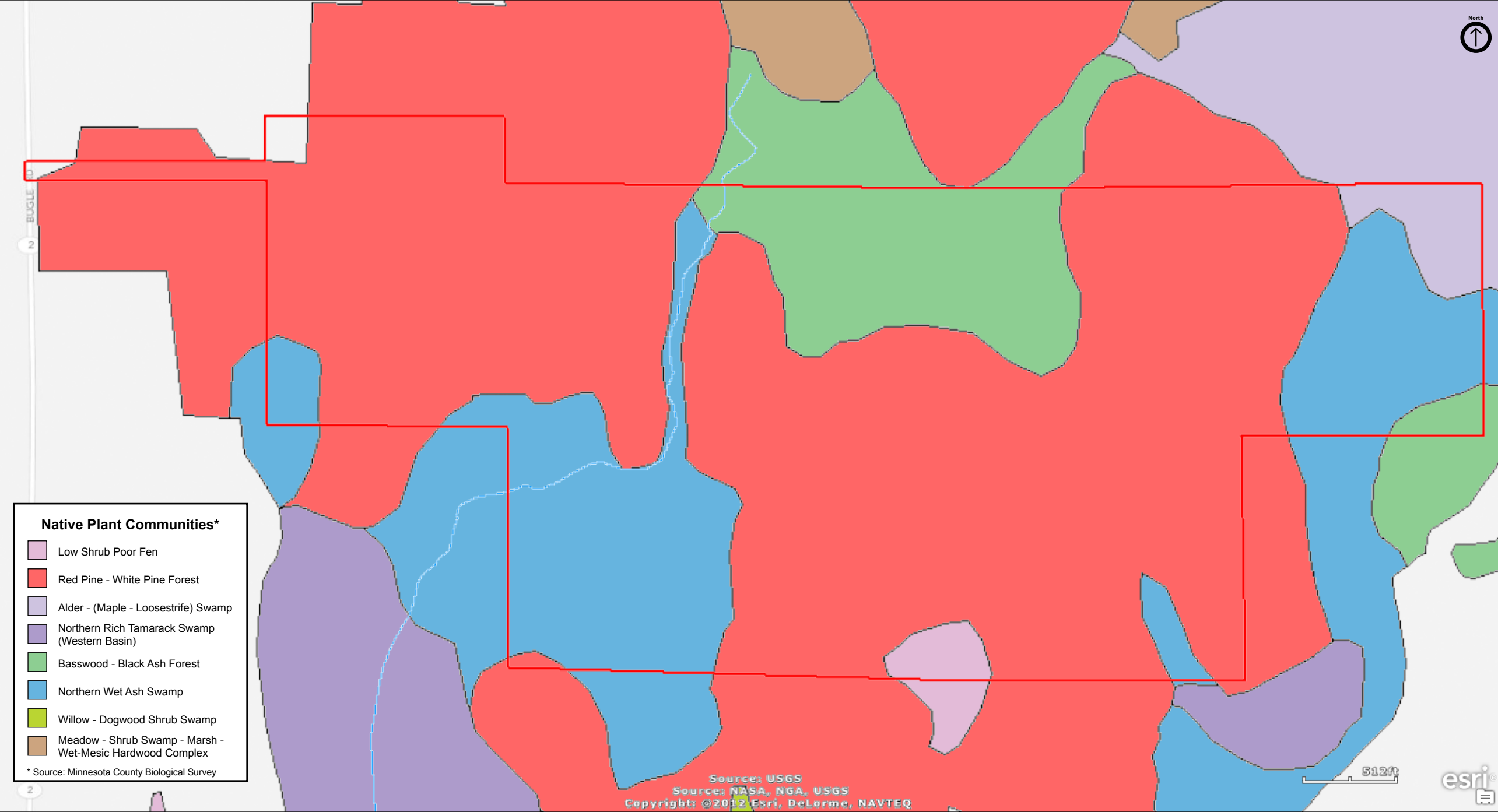
Lake Alexander Preserve
North Unit

Morrison County



Lake Alexander Preserve
North Unit

Morrison County



Lake Alexander Preserve

North Unit

Directions and Notes from The Nature Conservancy

The Nature Conservancy Website does not give directions to this unit of the preserve.

Notes from MinnesotaSeasons.com

Parking

N46 17.398, W94 34.770

Directions to the North Unit

The Nature Conservancy Website does not give directions to the north unit. From Cushing, take US Highway 10 north 13.5 miles to Azalea Road (County Road 28). Drive west on Azalea Road 3.25 miles to Bugle Road (County Road 2). Drive south on Bugle Road 1.5 miles to the parking spot for the preserve on the east side of the road. Hike east on the narrow access corridor to the preserve.

DISCLAIMER OF WARRANTIES AND LIMITATIONS OF LIABILITY

MinnesotaSeasons.com, The Nature Conservancy, U.S. Department of Agriculture, Forest Service, U.S. Fish and Wildlife Service, the state of Minnesota, the Minnesota Department of Natural Resources, and their employees, make no representations or warranties, express or implied, with respect to the use of or reliance on the data provided herewith, regardless of its format or means of transmission. There are no guarantees or representations to the user as to the accuracy, currency, completeness, suitability or reliability of this data for any purpose. THE USER ACCEPTS THE DATA AND/OR SOFTWARE "AS IS" AND ASSUMES ALL RISKS ASSOCIATED WITH ITS USE.

IN NO EVENT SHALL MINNESOTASEASONS.COM, TNC, USDA-FS, USFWS, OR MNDNR BE LIABLE FOR ANY DIRECT, INDIRECT, INCIDENTAL, SPECIAL, EXEMPLARY, OR CONSEQUENTIAL DAMAGES (INCLUDING, BUT NOT LIMITED TO, PROCUREMENT OF SUBSTITUTE GOODS OR SERVICES; LOSS OF USE, DATA, OR PROFITS; OR BUSINESS INTERRUPTION) HOWEVER CAUSED AND ON ANY THEORY OF LIABILITY, WHETHER IN CONTRACT, STRICT LIABILITY, OR TORT (INCLUDING NEGLIGENCE OR OTHERS) ARISING IN ANY WAY OUT OF THE USE OF THIS DATA, EVEN IF ADVISED OF THE POSSIBILITY OF SUCH DAMAGE OR FOR ANY CLAIM BY ANY OTHER PARTY.

Your use of the data is acceptance on your part of the terms and conditions set forth herein.