

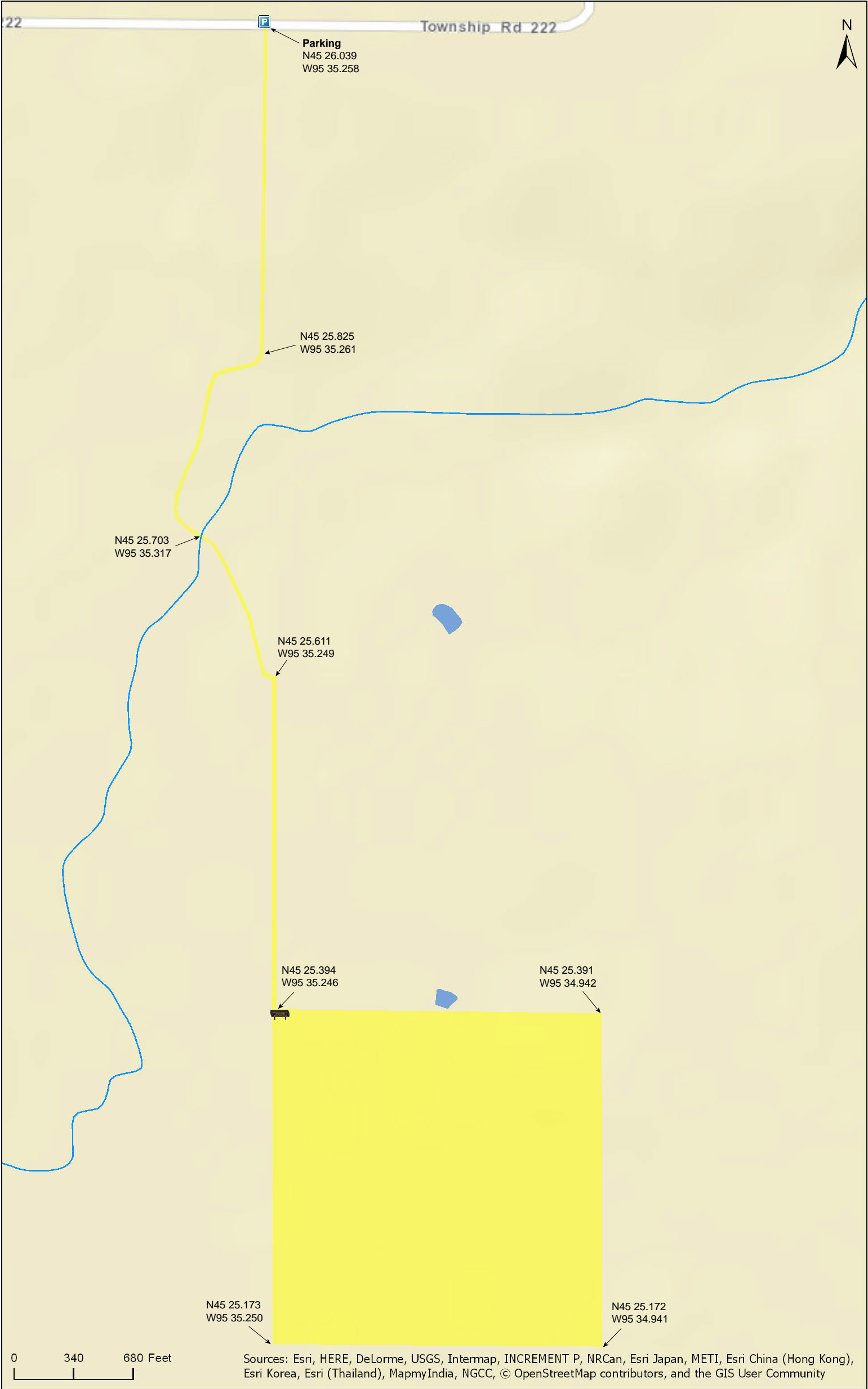
Langhei Prairie SNA  
Approach

Pope County



Langhei Prairie SNA  
Approach

Pope County





Langhei Prairie SNA

Pope County







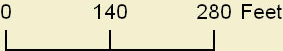
N45 25.394  
W95 35.246

N45 25.391  
W95 34.942

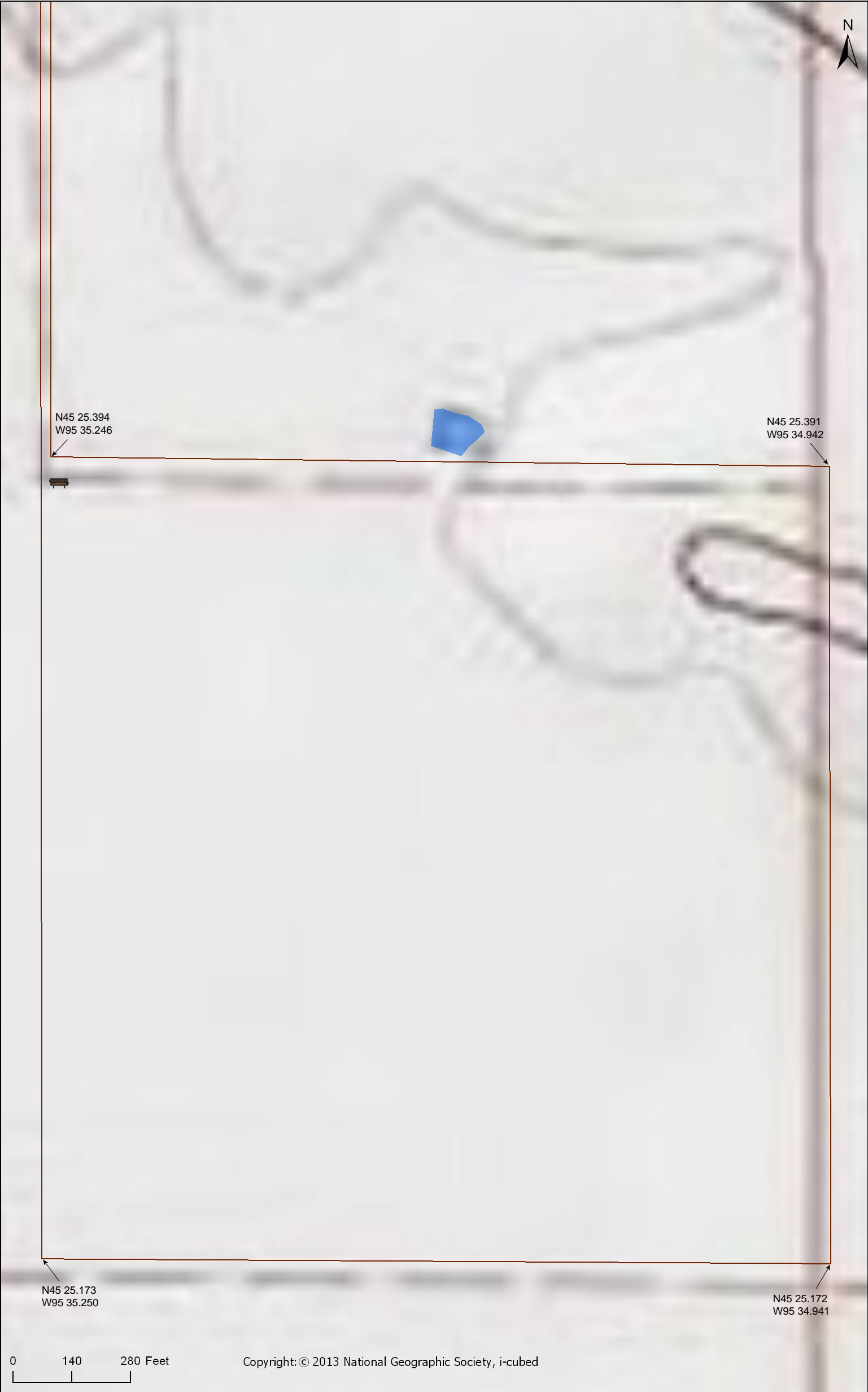


N45 25.173  
W95 35.250

N45 25.172  
W95 34.941



Sources: Esri, HERE, DeLorme, USGS, Intermap, INCREMENT P, NRCan, Esri Japan, METI, Esri China (Hong Kong), Esri Korea, Esri (Thailand), MapmyIndia, NGCC, © OpenStreetMap contributors, and the GIS User Community



Langhei Prairie SNA

Pope County

**Native Plant Communities\***

- Mesic Prairie (Southern)
- Basin Meadow/Carr
- Wet Prairie (Southern)

\* Source: Minnesota Biological Survey

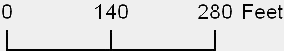


N45 25.394  
W95 35.246

N45 25.391  
W95 34.942

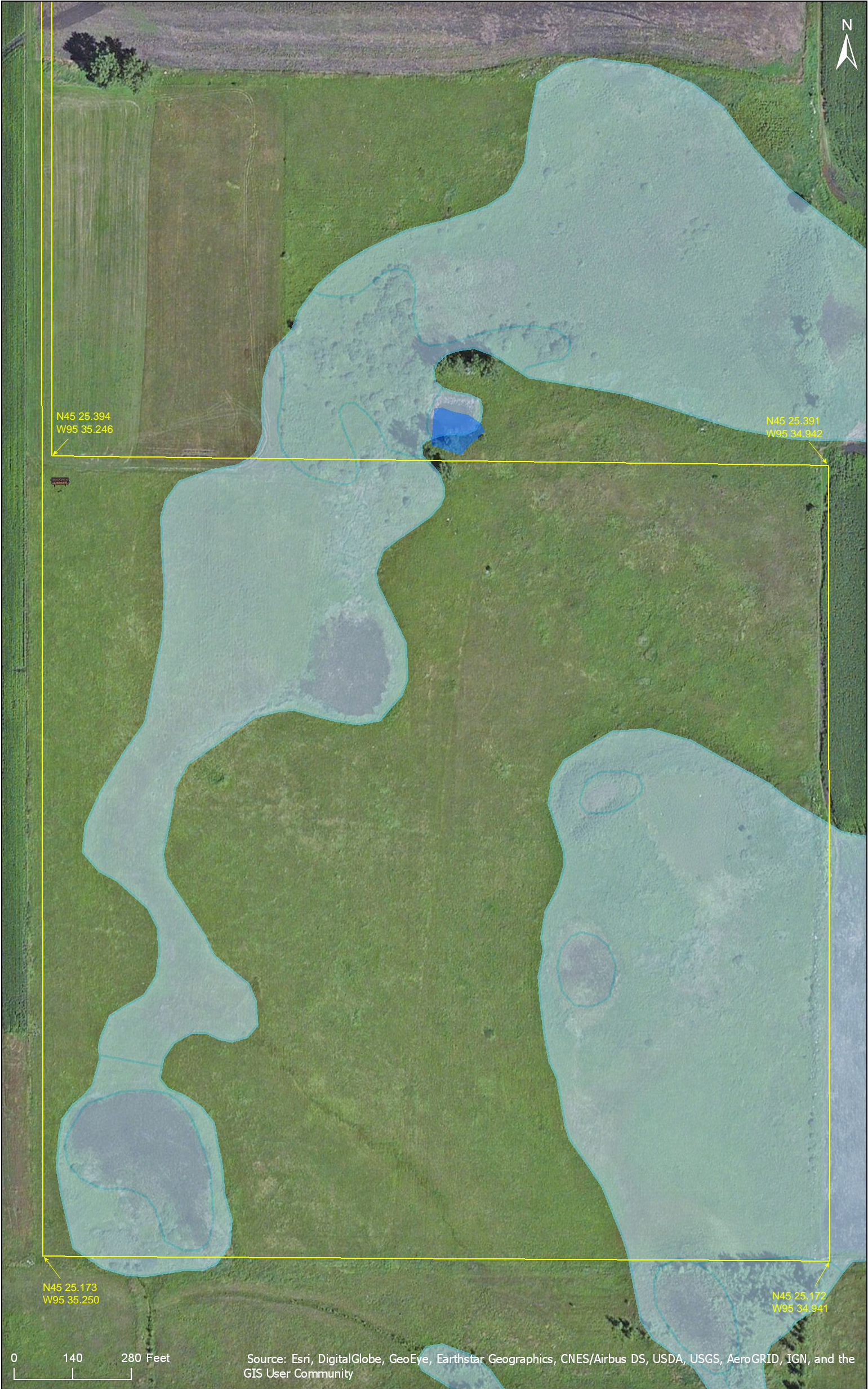
N45 25.173  
W95 35.250

N45 25.172  
W95 34.941



Esri, HERE, DeLorme, MapmyIndia, © OpenStreetMap contributors, and the GIS user community





0 140 280 Feet

Source: Esri, DigitalGlobe, GeoEye, Earthstar Geographics, CNES/Airbus DS, USDA, USGS, AeroGRID, IGN, and the GIS User Community



# Langhei Prairie SNA

## **Directions and Notes from Minnesota DNR**

**Directions:** From Starbuck 11.5 miles S on MN Hwy 29, then 1 mile W on 320th St, then 0.5 mile S on 320th St, then 0.25 mile W on 325th St. Park in pull-off on S. Hike field road corridor 0.8 mile S to site.

**Lat/Lon:** 45.433974, -95.587634

This site has no maintained trails or other recreational facilities.

## **Notes from MinnesotaSeasons.com**

### **Parking**

N45 26.039, W95 35.258

Park on the shoulder of Township Road T-222 next to the access road. Do not block the road.

## **DISCLAIMER OF WARRANTIES AND LIMITATIONS OF LIABILITY**

MinnesotaSeasons.com, The Nature Conservancy, U.S. Department of Agriculture, Forest Service, U.S. Fish and Wildlife Service, the state of Minnesota, the Minnesota Department of Natural Resources, and their employees, make no representations or warranties, express or implied, with respect to the use of or reliance on the data provided herewith, regardless of its format or means of transmission. There are no guarantees or representations to the user as to the accuracy, currency, completeness, suitability or reliability of this data for any purpose. THE USER ACCEPTS THE DATA AND/OR SOFTWARE "AS IS" AND ASSUMES ALL RISKS ASSOCIATED WITH ITS USE.

IN NO EVENT SHALL MINNESOTASEASONS.COM, TNC, USDA-FS, USFWS, OR MNDNR BE LIABLE FOR ANY DIRECT, INDIRECT, INCIDENTAL, SPECIAL, EXEMPLARY, OR CONSEQUENTIAL DAMAGES (INCLUDING, BUT NOT LIMITED TO, PROCUREMENT OF SUBSTITUTE GOODS OR SERVICES; LOSS OF USE, DATA, OR PROFITS; OR BUSINESS INTERRUPTION) HOWEVER CAUSED AND ON ANY THEORY OF LIABILITY, WHETHER IN CONTRACT, STRICT LIABILITY, OR TORT (INCLUDING NEGLIGENCE OR OTHERS) ARISING IN ANY WAY OUT OF THE USE OF THIS DATA, EVEN IF ADVISED OF THE POSSIBILITY OF SUCH DAMAGE OR FOR ANY CLAIM BY ANY OTHER PARTY.

Your use of the data is acceptance on your part of the terms and conditions set forth herein.