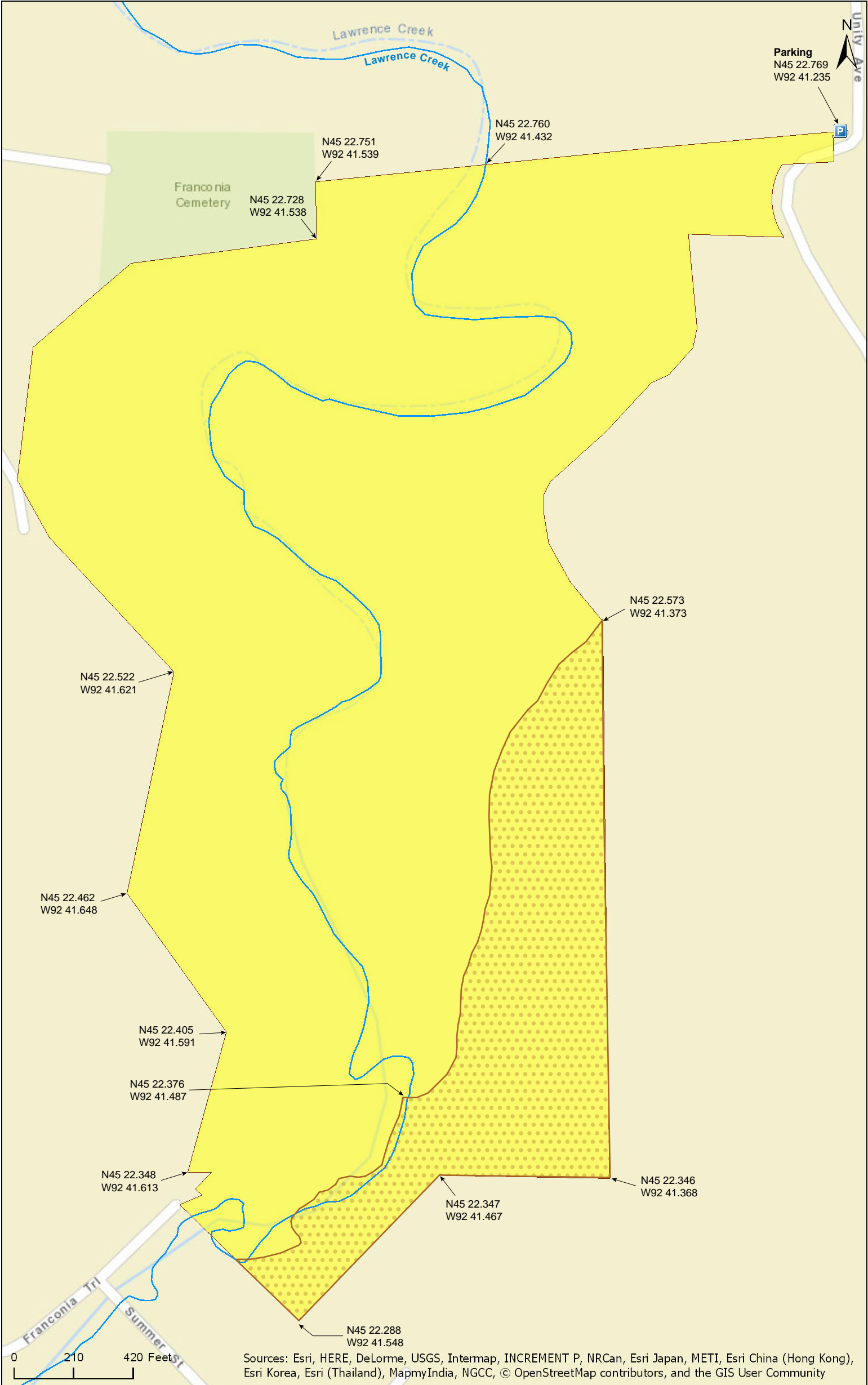




Lawrence Creek SNA

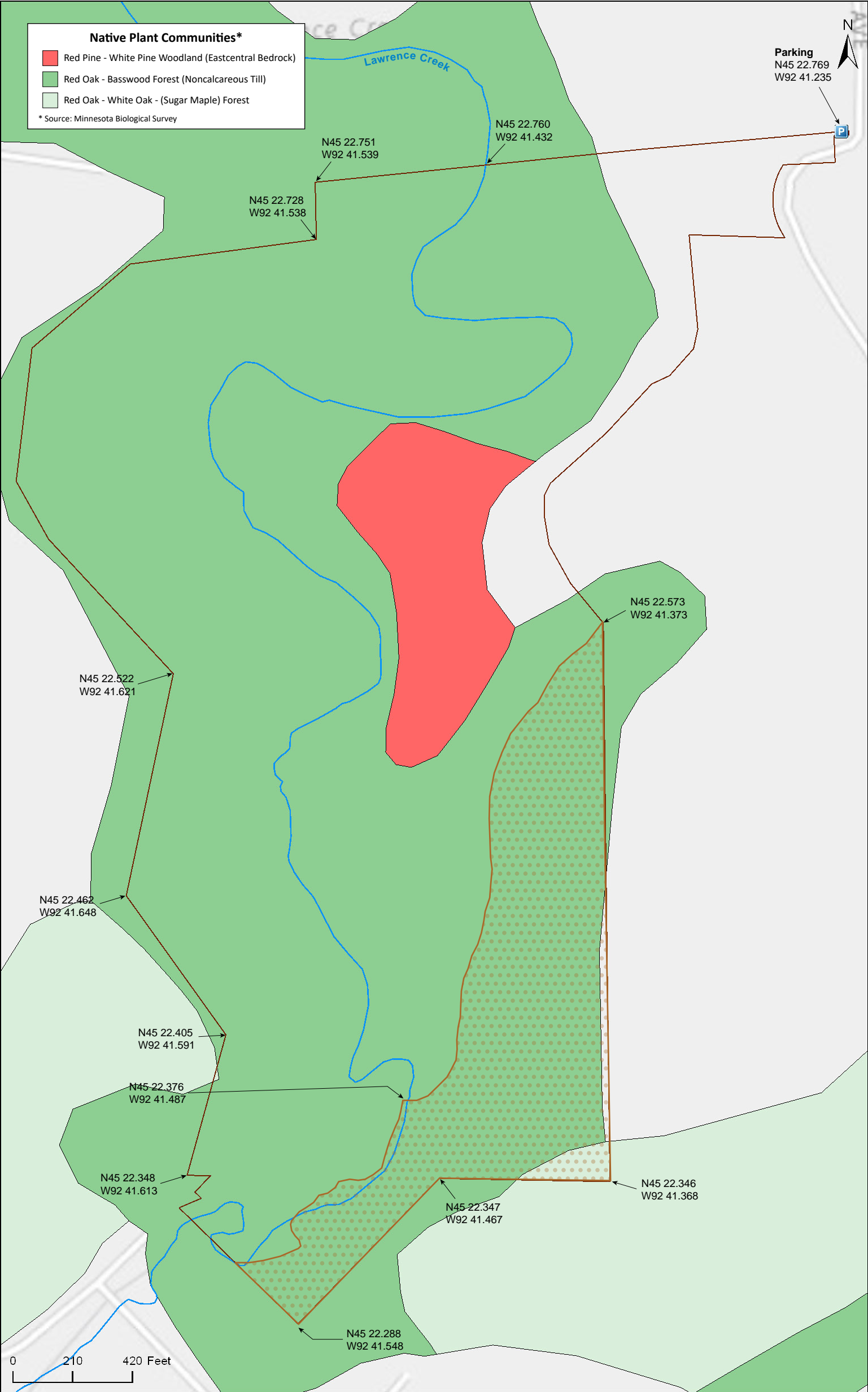
Chisago County





Lawrence Creek SNA

Chisago County





Lawrence Creek SNA

Directions and Notes from Minnesota DNR

Directions: From Taylors Falls 2.5 miles SW on US Hwy 8/St. Croix Trail, then 0.1 mile S on Unity Ave. Park in pull off at corner where Unity Ave turns W. Hike west through old field into woods of site.

Lat/Lon: 45.379481, -92.687254

Sanctuary (posted sanctuary portion closed). This site has no maintained trails or other recreational facilities. The steep cliffs and rugged terrain here present a safety hazard to visitors. The plant communities on cliffs are also sensitive to disturbance. Stay back from cliffs and off steep slopes. This site is an Audubon Important Bird Area. The site is adjacent to the Lower St. Croix National Scenic Riverway.

Notes from MinnesotaSeasons.com

Parking

N45 22.769, W92 41.235

DISCLAIMER OF WARRANTIES AND LIMITATIONS OF LIABILITY

MinnesotaSeasons.com, The Nature Conservancy, U.S. Department of Agriculture, Forest Service, U.S. Fish and Wildlife Service, the state of Minnesota, the Minnesota Department of Natural Resources, and their employees, make no representations or warranties, express or implied, with respect to the use of or reliance on the data provided herewith, regardless of its format or means of transmission. There are no guarantees or representations to the user as to the accuracy, currency, completeness, suitability or reliability of this data for any purpose. THE USER ACCEPTS THE DATA AND/OR SOFTWARE "AS IS" AND ASSUMES ALL RISKS ASSOCIATED WITH ITS USE.

IN NO EVENT SHALL MINNESOTASEASONS.COM, TNC, USDA-FS, USFWS, OR MNDNR BE LIABLE FOR ANY DIRECT, INDIRECT, INCIDENTAL, SPECIAL, EXEMPLARY, OR CONSEQUENTIAL DAMAGES (INCLUDING, BUT NOT LIMITED TO, PROCUREMENT OF SUBSTITUTE GOODS OR SERVICES; LOSS OF USE, DATA, OR PROFITS; OR BUSINESS INTERRUPTION) HOWEVER CAUSED AND ON ANY THEORY OF LIABILITY, WHETHER IN CONTRACT, STRICT LIABILITY, OR TORT (INCLUDING NEGLIGENCE OR OTHERS) ARISING IN ANY WAY OUT OF THE USE OF THIS DATA, EVEN IF ADVISED OF THE POSSIBILITY OF SUCH DAMAGE OR FOR ANY CLAIM BY ANY OTHER PARTY.

Your use of the data is acceptance on your part of the terms and conditions set forth herein.