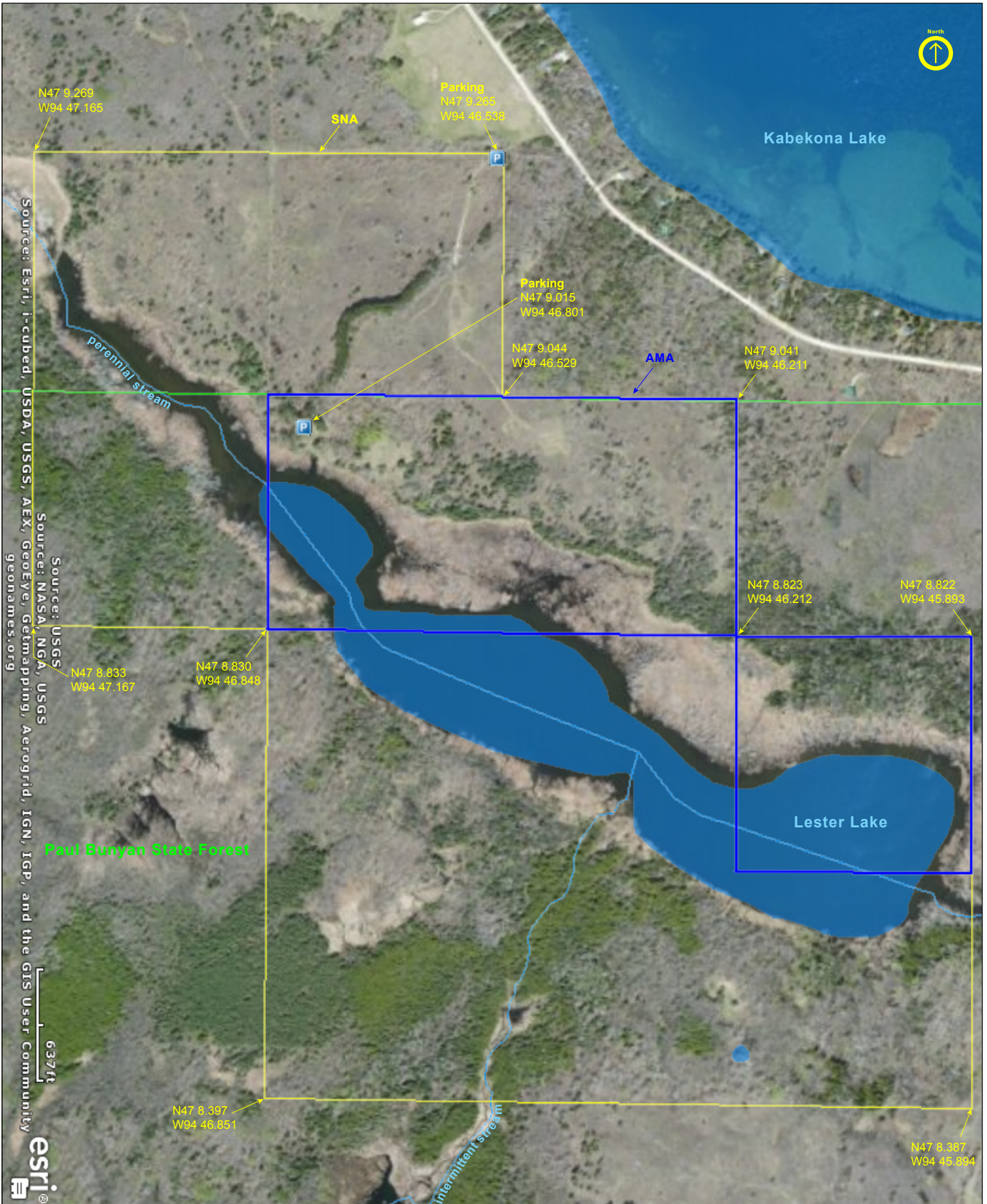


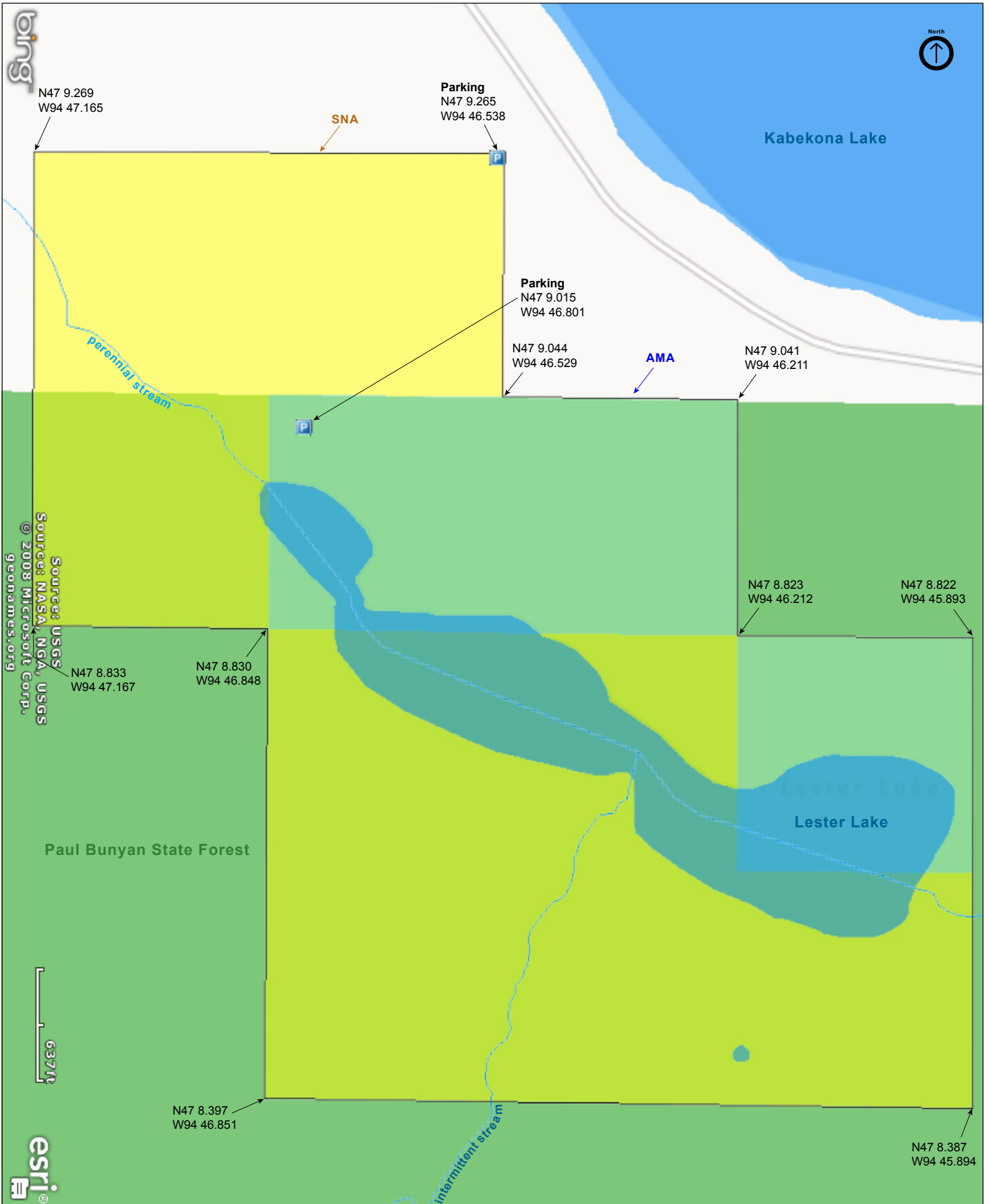
# Lester Lake Forest SNA/AMA

Hubbard County



# Lester Lake Forest SNA/AMA

Hubbard County



# Lester Lake Forest SNA/AMA

Hubbard County



# Lester Lake Forest SNA/AMA

## Directions and Notes from Minnesota DNR

1) From Laporte 2 miles W on MN Hwy 200, then 3.5 miles S on MN Hwy 64. Then 1.5 miles SE on Co Hwy 37 (S Kabekona Lake Dr), then 0.5 mile W then S on road to water access. Park in lot at dead end.

2) From Laporte 2 miles W on MN Hwy 200, then 3.5 miles S on MN Hwy 64. Then 1.5 miles SE on Co Hwy 37 (S Kabekona Lake Dr), then about 375 feet W to parking lot.

This site has no maintained trails or other recreational facilities.

This site is adjacent to Paul Bunyan State Forest.

## Notes from MinnesotaSeasons.com

### **Parking**

Co Hwy 37 (S Kabekona Lake Dr.)  
N47 9.256, W94 46.549

Lester Lake  
N47 8.993, W94 46.790

## **DISCLAIMER OF WARRANTIES AND LIMITATIONS OF LIABILITY**

MinnesotaSeasons.com, The Nature Conservancy, U.S. Department of Agriculture, Forest Service, U.S. Fish and Wildlife Service, the state of Minnesota, the Minnesota Department of Natural Resources, and their employees, make no representations or warranties, express or implied, with respect to the use of or reliance on the data provided herewith, regardless of its format or means of transmission. There are no guarantees or representations to the user as to the accuracy, currency, completeness, suitability or reliability of this data for any purpose. THE USER ACCEPTS THE DATA AND/OR SOFTWARE "AS IS" AND ASSUMES ALL RISKS ASSOCIATED WITH ITS USE.

IN NO EVENT SHALL MINNESOTASEASONS.COM, TNC, USDA-FS, USFWS, OR MNDNR BE LIABLE FOR ANY DIRECT, INDIRECT, INCIDENTAL, SPECIAL, EXEMPLARY, OR CONSEQUENTIAL DAMAGES (INCLUDING, BUT NOT LIMITED TO, PROCUREMENT OF SUBSTITUTE GOODS OR SERVICES; LOSS OF USE, DATA, OR PROFITS; OR BUSINESS INTERRUPTION) HOWEVER CAUSED AND ON ANY THEORY OF LIABILITY, WHETHER IN CONTRACT, STRICT LIABILITY, OR TORT (INCLUDING NEGLIGENCE OR OTHERS) ARISING IN ANY WAY OUT OF THE USE OF THIS DATA, EVEN IF ADVISED OF THE POSSIBILITY OF SUCH DAMAGE OR FOR ANY CLAIM BY ANY OTHER PARTY.

Your use of the data is acceptance on your part of the terms and conditions set forth herein.