

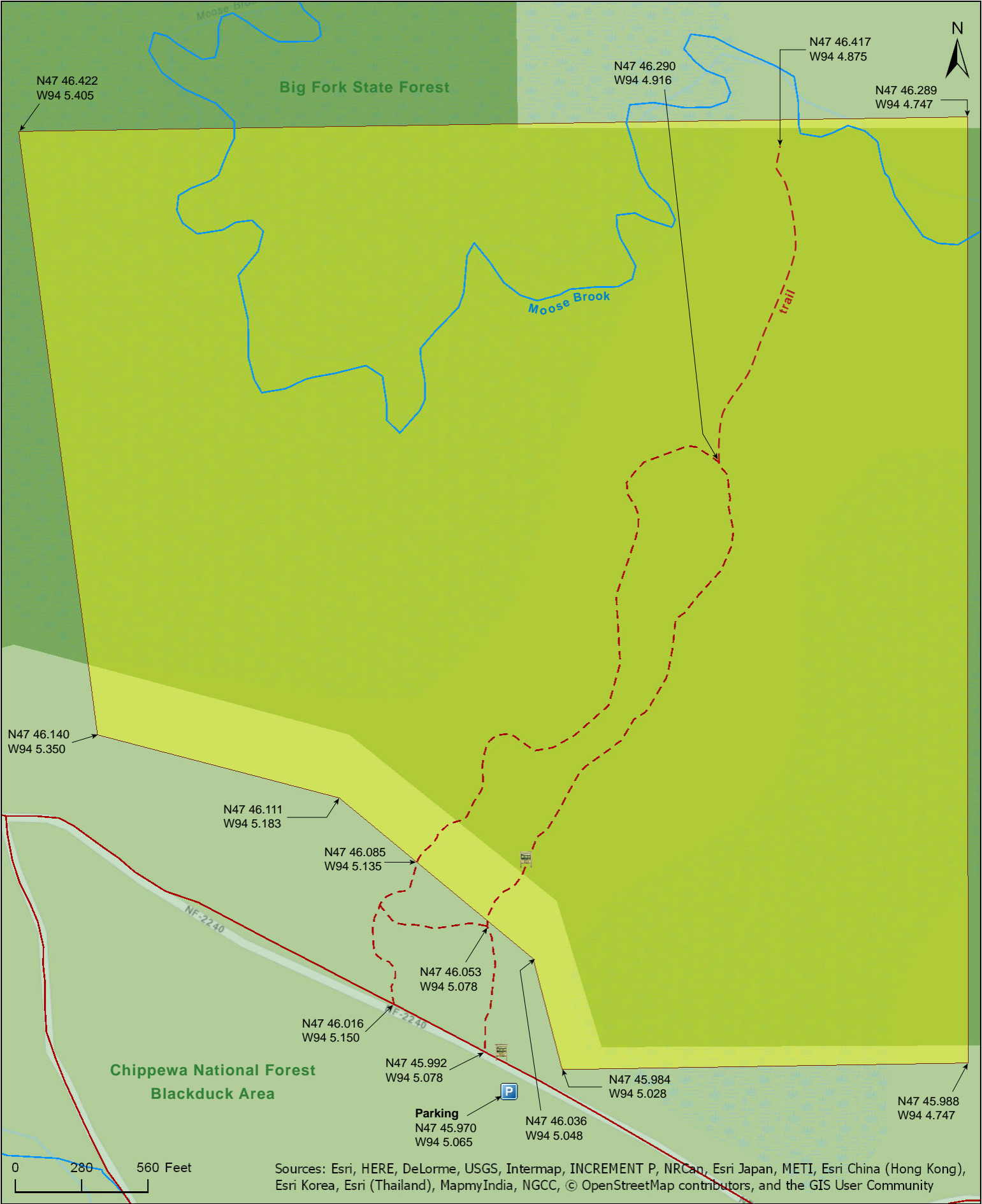
Lost 40 SNA

Itasca County



Lost 40 SNA

Itasca County



Lost 40 SNA

Itasca County





Directions and Notes from Minnesota DNR

Directions: From Alvwood, 11 miles E on Co Hwy 29, then 2 miles N on Co Hwy 26, then 0.8 mile W on Forest Rd 2240. Parking in lot on S.

Lat/Lon: 47.766171, -94.084421

An interpretive trail passes through site... This site is in an Audubon Important Bird Area and Watchable Wildlife Viewing Area. This site is within the Chippewa National Forest.

Notes from MinnesotaSeasons.com

Parking

N47 45.970, W94 5.065

This SNA lies within the borders of the Big Fork State Forest. It is in the Blackduck Area of the Chippewa National Forest.

Popular Site

Despite its remoteness, this is a well-used site. A visitor who walks slowly looking at plants, birds, and insects is likely to be passed more than once by retired baby boomers power-walking this easy one-mile trail.

Directions and Notes from The U.S. Forest Service

Directions: From Blackduck take County Roads 30/13 to Alvwood, travel north on State Highway 46 for 1/2 mile to County Road 29. Follow 29 east for about 11 miles to Dora Lake and County Road 26. Travel 2 miles north on 26 to Forest Road 2240. About 1 1/2 miles west of this intersection you will find a sign for the Lost Forty.

Experience the forest of yesteryear at the Lost Forty. Minnesota was one of the largest timber-producing states in the country in the late 1800s, but 144 acres of red and white pines went untouched by loggers when a surveying error mapped the area as part of Coddington Lake. The survey crew's error in 1882, became one of Minnesota's greatest treasures. Today, less than two percent of Minnesota's forested land contains old growth timber. The Lost Forty pines are 300-400 years old, originating when the pilgrims came to America. The trees remain as remnants of the natural resources that drew people to new frontiers and shaping America's character. A one-mile, self-guided trail winds its way through the towering pines of the Lost Forty.

DISCLAIMER OF WARRANTIES AND LIMITATIONS OF LIABILITY

MinnesotaSeasons.com, The Nature Conservancy, U.S. Department of Agriculture, Forest Service, U.S. Fish and Wildlife Service, the state of Minnesota, the Minnesota Department of Natural Resources, and their employees, make no representations or warranties, express or implied, with respect to the use of or reliance on the data provided herewith, regardless of its format or means of transmission. There are no guarantees or representations to the user as to the accuracy, currency, completeness, suitability or reliability of this data for any purpose. THE USER ACCEPTS THE DATA AND/OR SOFTWARE "AS IS" AND ASSUMES ALL RISKS ASSOCIATED WITH ITS USE.

IN NO EVENT SHALL MINNESOTASEASONS.COM, TNC, USDA-FS, USFWS, OR MNDNR BE LIABLE FOR ANY DIRECT, INDIRECT, INCIDENTAL, SPECIAL, EXEMPLARY, OR CONSEQUENTIAL DAMAGES (INCLUDING, BUT NOT LIMITED TO, PROCUREMENT OF SUBSTITUTE GOODS OR SERVICES; LOSS OF USE, DATA, OR PROFITS; OR BUSINESS INTERRUPTION) HOWEVER CAUSED AND ON ANY THEORY OF LIABILITY, WHETHER IN CONTRACT, STRICT LIABILITY, OR TORT (INCLUDING NEGLIGENCE OR OTHERS) ARISING IN ANY WAY OUT OF THE USE OF THIS DATA, EVEN IF ADVISED OF THE POSSIBILITY OF SUCH DAMAGE OR FOR ANY CLAIM BY ANY OTHER PARTY.

Your use of the data is acceptance on your part of the terms and conditions set forth herein.