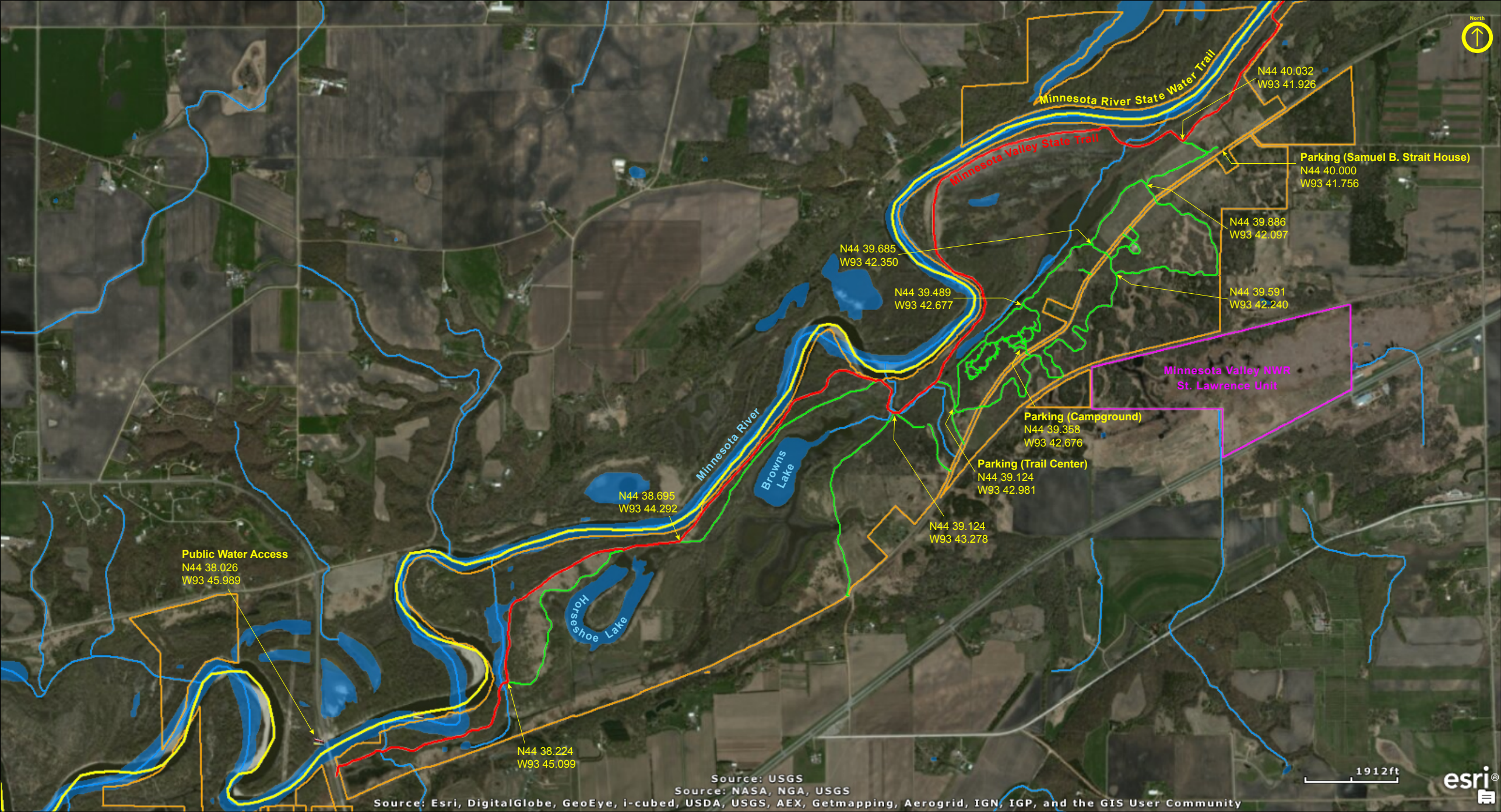


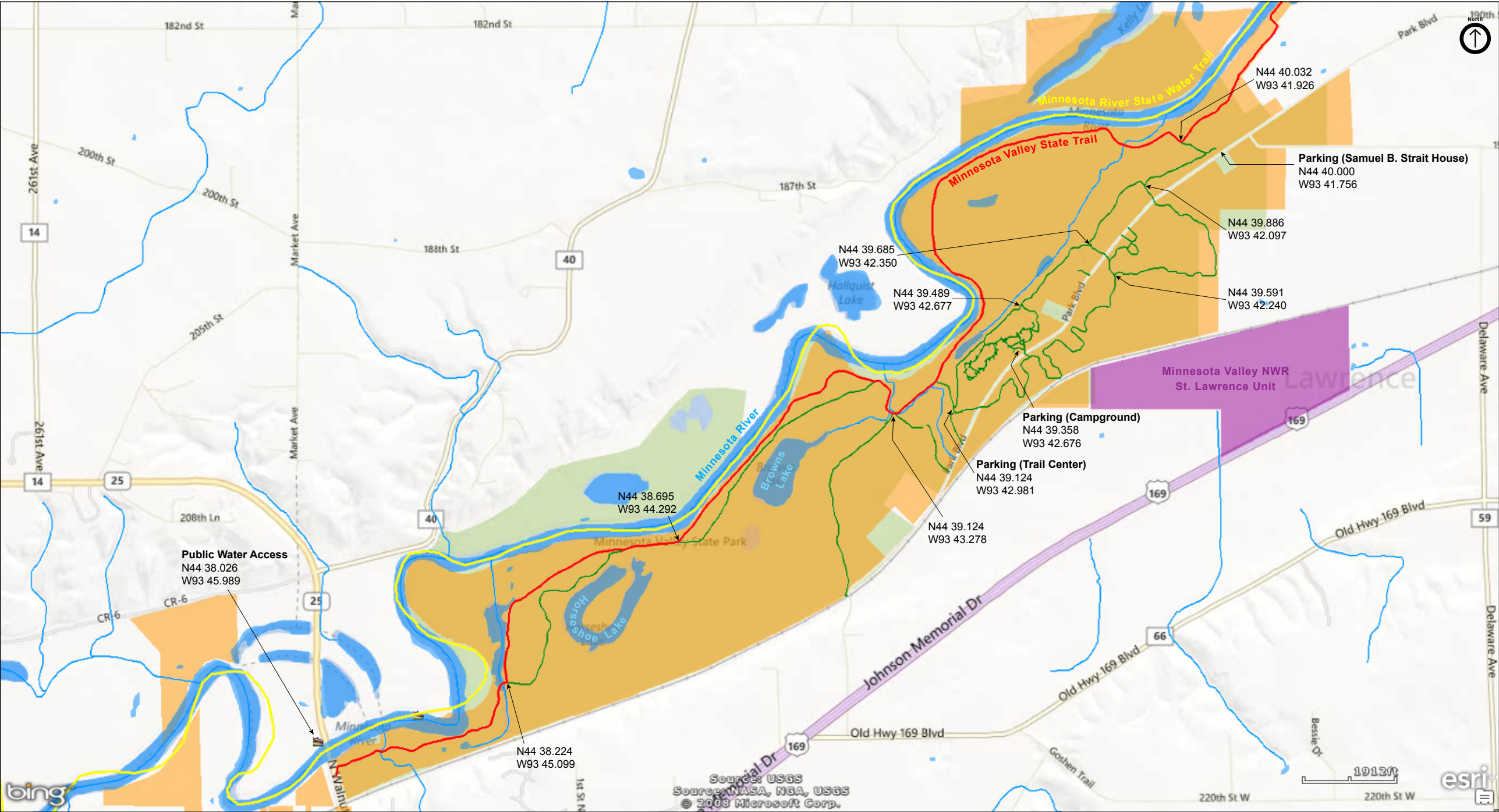
Minnesota Valley State Recreation Area
Lawrence Unit

Scott County



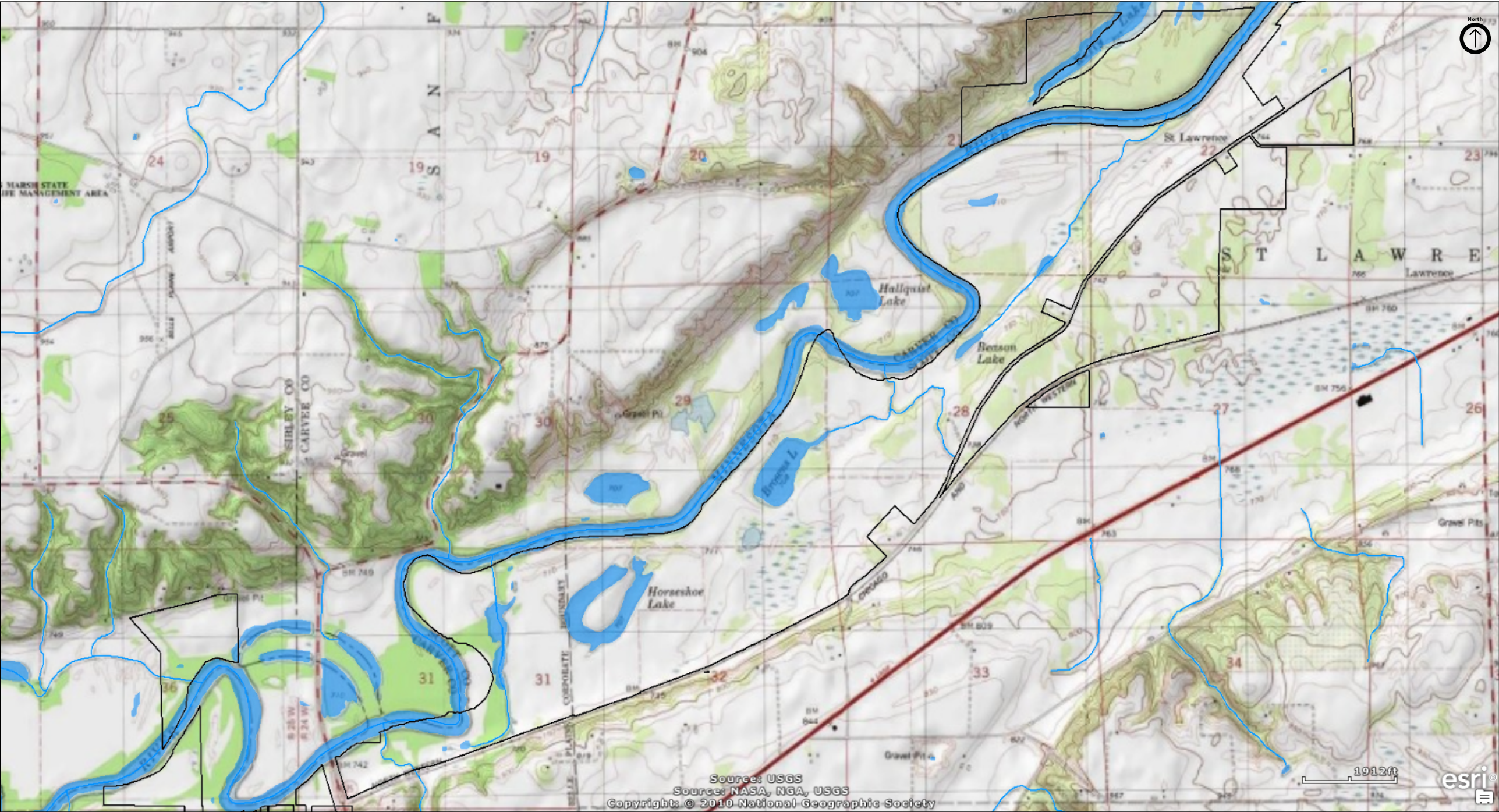
Minnesota Valley State Recreation Area
Lawrence Unit

Scott County



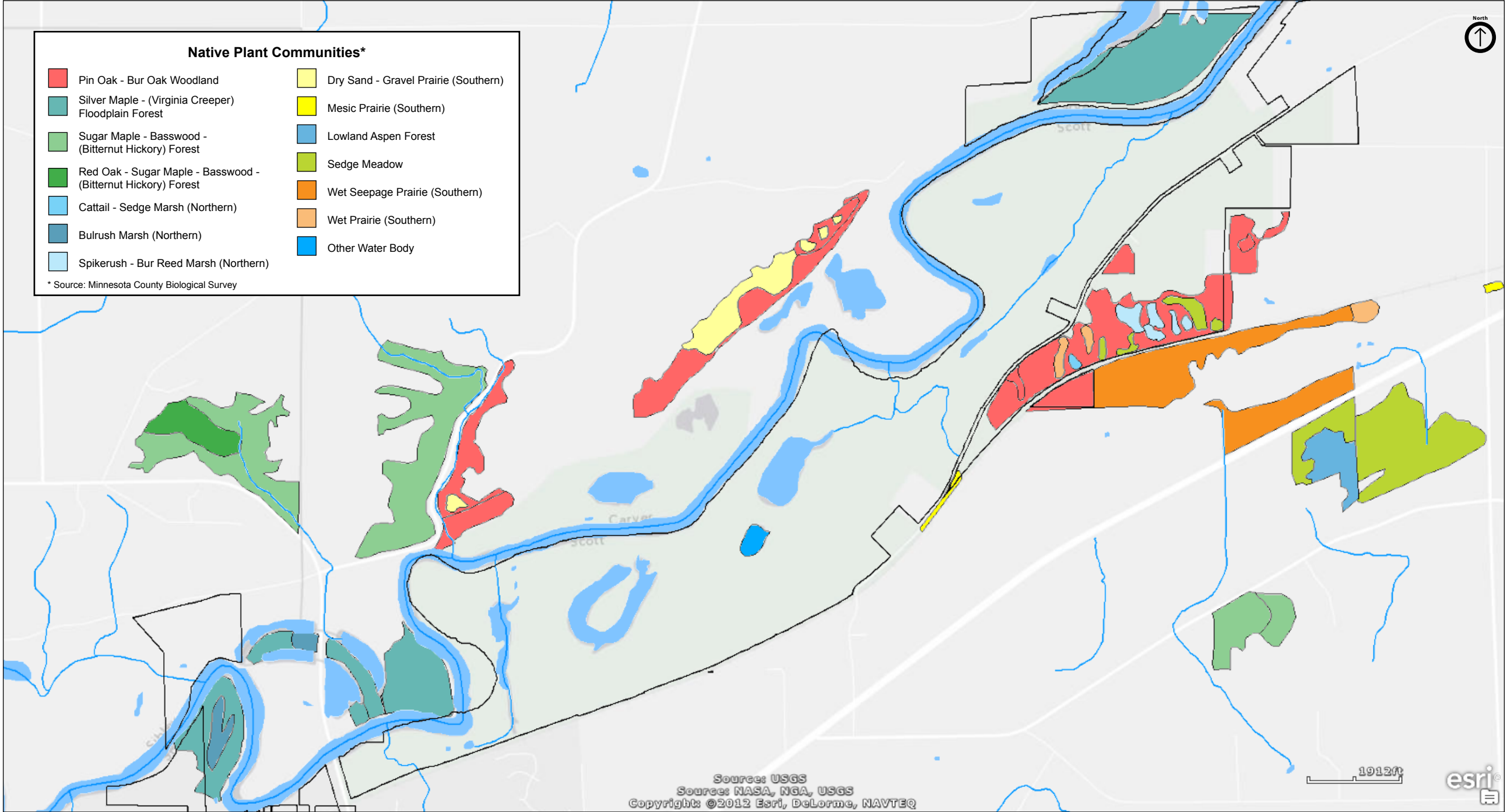
Minnesota Valley State Recreation Area
Lawrence Unit

Scott County



Minnesota Valley State Recreation Area Lawrence Unit

Scott County



Minnesota Valley State Recreation Area

Lawrence Unit

Directions and Notes from Minnesota DNR

Take HWY 169 to Jordan, at the traffic light turn North onto County Road 9, turn left onto Township Road 57.

Equestrian campground, State Trail Access, Picnic Shelter/Warming House, Strait House, hiking and Cross Country Ski Trails.

Notes from MinnesotaSeasons.com

Parking

Trail Center
N44 39.124, W93 42.981

The Minnesota Valley State Trail passes through the site.

The Minnesota River State Water Trail passes along the northern border of the site.

DISCLAIMER OF WARRANTIES AND LIMITATIONS OF LIABILITY

MinnesotaSeasons.com, The Nature Conservancy, U.S. Department of Agriculture, Forest Service, U.S. Fish and Wildlife Service, the state of Minnesota, the Minnesota Department of Natural Resources, and their employees, make no representations or warranties, express or implied, with respect to the use of or reliance on the data provided herewith, regardless of its format or means of transmission. There are no guarantees or representations to the user as to the accuracy, currency, completeness, suitability or reliability of this data for any purpose. THE USER ACCEPTS THE DATA AND/OR SOFTWARE "AS IS" AND ASSUMES ALL RISKS ASSOCIATED WITH ITS USE.

IN NO EVENT SHALL MINNESOTASEASONS.COM, TNC, USDA-FS, USFWS, OR MNDNR BE LIABLE FOR ANY DIRECT, INDIRECT, INCIDENTAL, SPECIAL, EXEMPLARY, OR CONSEQUENTIAL DAMAGES (INCLUDING, BUT NOT LIMITED TO, PROCUREMENT OF SUBSTITUTE GOODS OR SERVICES; LOSS OF USE, DATA, OR PROFITS; OR BUSINESS INTERRUPTION) HOWEVER CAUSED AND ON ANY THEORY OF LIABILITY, WHETHER IN CONTRACT, STRICT LIABILITY, OR TORT (INCLUDING NEGLIGENCE OR OTHERS) ARISING IN ANY WAY OUT OF THE USE OF THIS DATA, EVEN IF ADVISED OF THE POSSIBILITY OF SUCH DAMAGE OR FOR ANY CLAIM BY ANY OTHER PARTY.

Your use of the data is acceptance on your part of the terms and conditions set forth herein.