

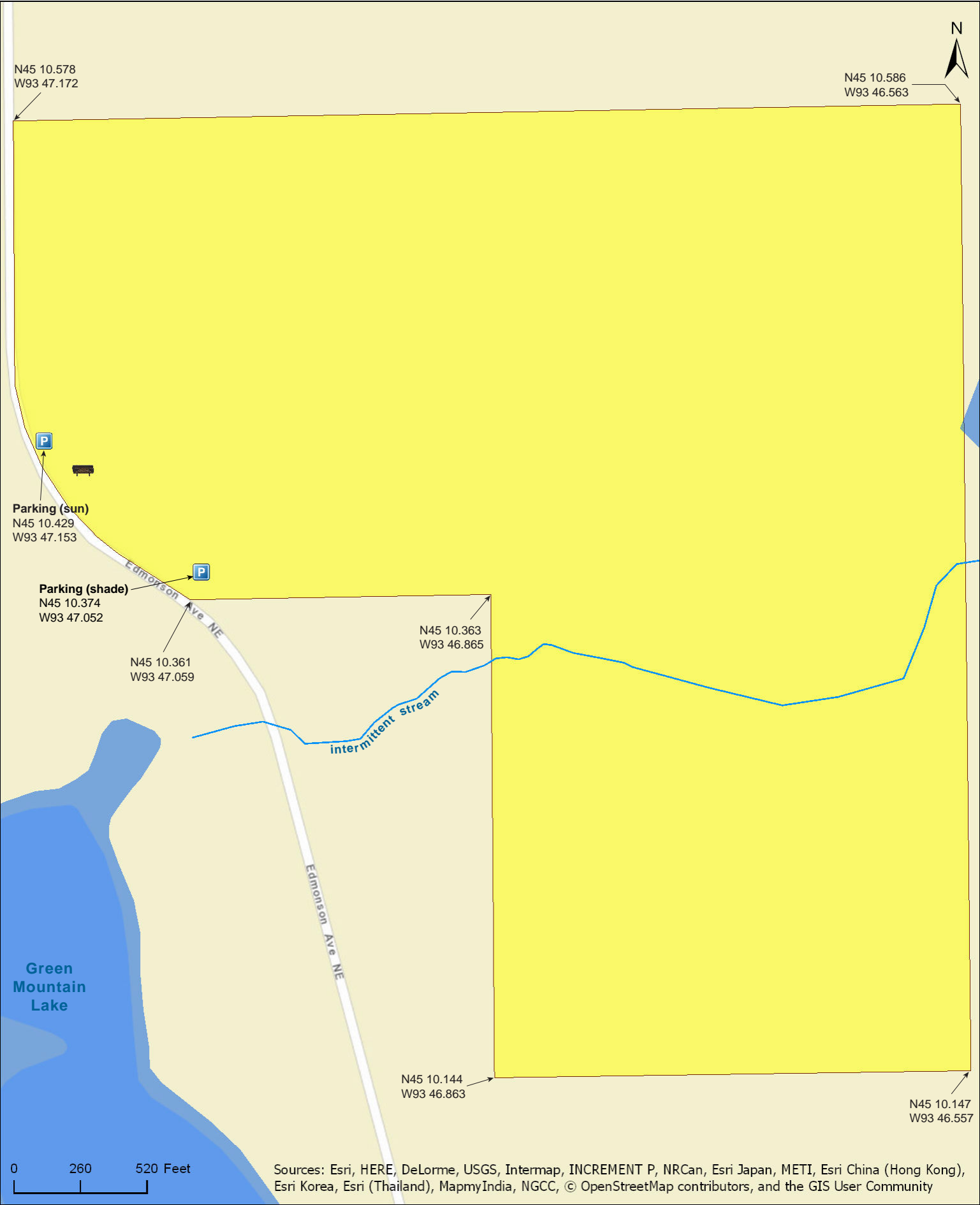
Mary Schmidt Crawford Woods SNA

Wright County



Mary Schmidt Crawford Woods SNA

Wright County



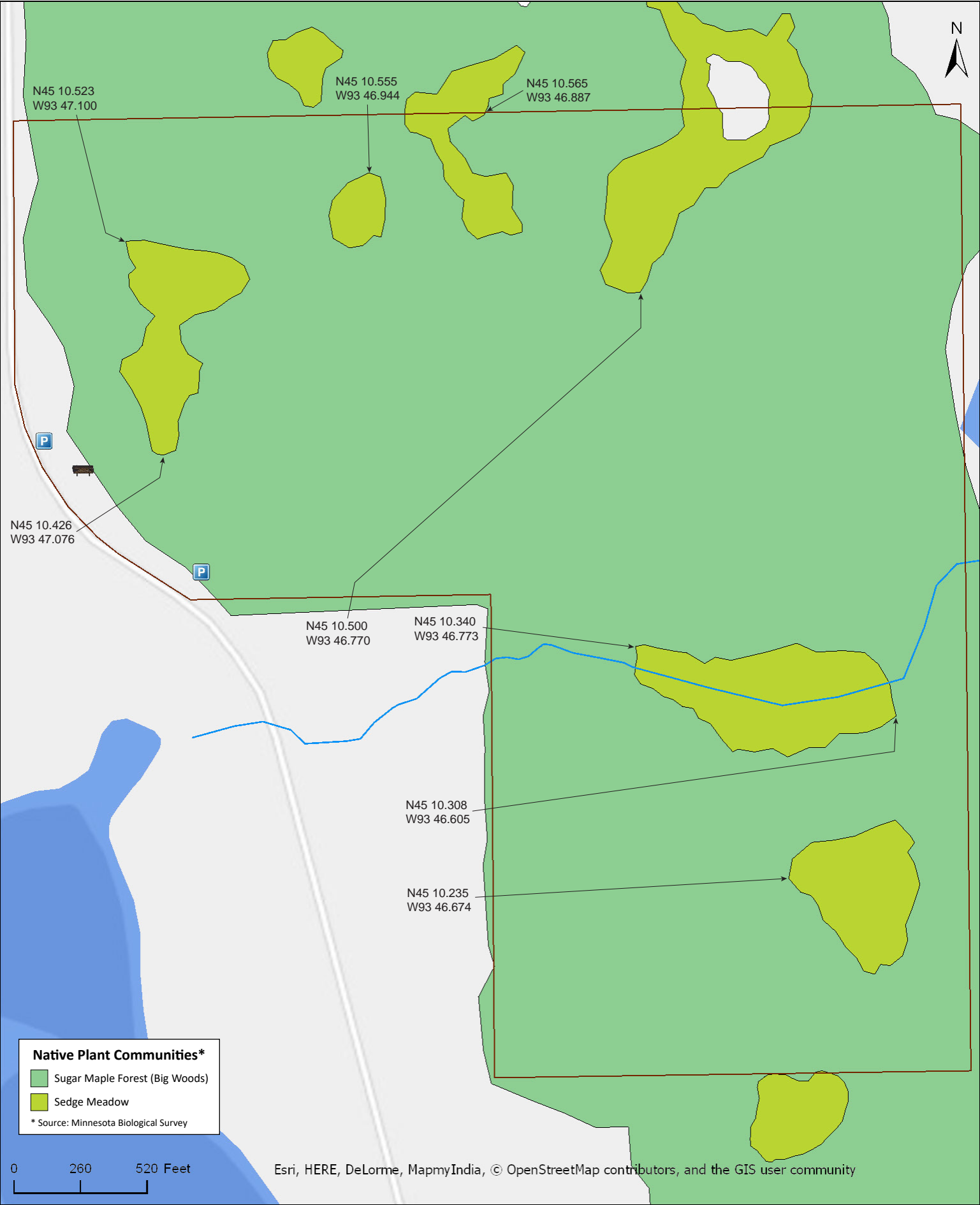
Mary Schmidt Crawford Woods SNA

Wright County



Mary Schmidt Crawford Woods SNA

Wright County





Mary Schmidt Crawford Woods SNA

Directions and Notes from Minnesota DNR

Directions

From Buffalo 4 miles E on Co Hwy 35, then 0.5 mile S on Twp Rd 126 (Edmunson Ave NE). Park on E shoulder near wood-routed sign.

Lat/Lon

45.173818, -93.785875

This site has no maintained trails or other recreational facilities.

Notes from MinnesotaSeasons.com

Parking

There is a slightly raised ditch crossing and short grassy roadway on the east side of Twp Rd 126 (Edmunson Ave. NE) that leads to the wood routed SNA sign. Park on the road shoulder or pull across the ditch and park in the sun.

N45 10.429, W93 47.153

One hundred yards south on the east side of Twp Rd 126 (Edmunson Ave. NE) there is a small, well-shaded parking lot. The parking lot is within the SNA boundary.

N45 10.374, W93 47.052

Hiking Trails

An old logging road forms the southern boundary of the panhandle portion of the SNA. A well worn, meandering footpath leads from the parking lot about 100 yards to a stone marker.

DISCLAIMER OF WARRANTIES AND LIMITATIONS OF LIABILITY

MinnesotaSeasons.com, The Nature Conservancy, U.S. Department of Agriculture, Forest Service, U.S. Fish and Wildlife Service, the state of Minnesota, the Minnesota Department of Natural Resources, and their employees, make no representations or warranties, express or implied, with respect to the use of or reliance on the data provided herewith, regardless of its format or means of transmission. There are no guarantees or representations to the user as to the accuracy, currency, completeness, suitability or reliability of this data for any purpose. THE USER ACCEPTS THE DATA AND/OR SOFTWARE "AS IS" AND ASSUMES ALL RISKS ASSOCIATED WITH ITS USE.

IN NO EVENT SHALL MINNESOTASEASONS.COM, TNC, USDA-FS, USFWS, OR MNDNR BE LIABLE FOR ANY DIRECT, INDIRECT, INCIDENTAL, SPECIAL, EXEMPLARY, OR CONSEQUENTIAL DAMAGES (INCLUDING, BUT NOT LIMITED TO, PROCUREMENT OF SUBSTITUTE GOODS OR SERVICES; LOSS OF USE, DATA, OR PROFITS; OR BUSINESS INTERRUPTION) HOWEVER CAUSED AND ON ANY THEORY OF LIABILITY, WHETHER IN CONTRACT, STRICT LIABILITY, OR TORT (INCLUDING NEGLIGENCE OR OTHERS) ARISING IN ANY WAY OUT OF THE USE OF THIS DATA, EVEN IF ADVISED OF THE POSSIBILITY OF SUCH DAMAGE OR FOR ANY CLAIM BY ANY OTHER PARTY.

Your use of the data is acceptance on your part of the terms and conditions set forth herein.