

Mound Prairie SNA
South Unit

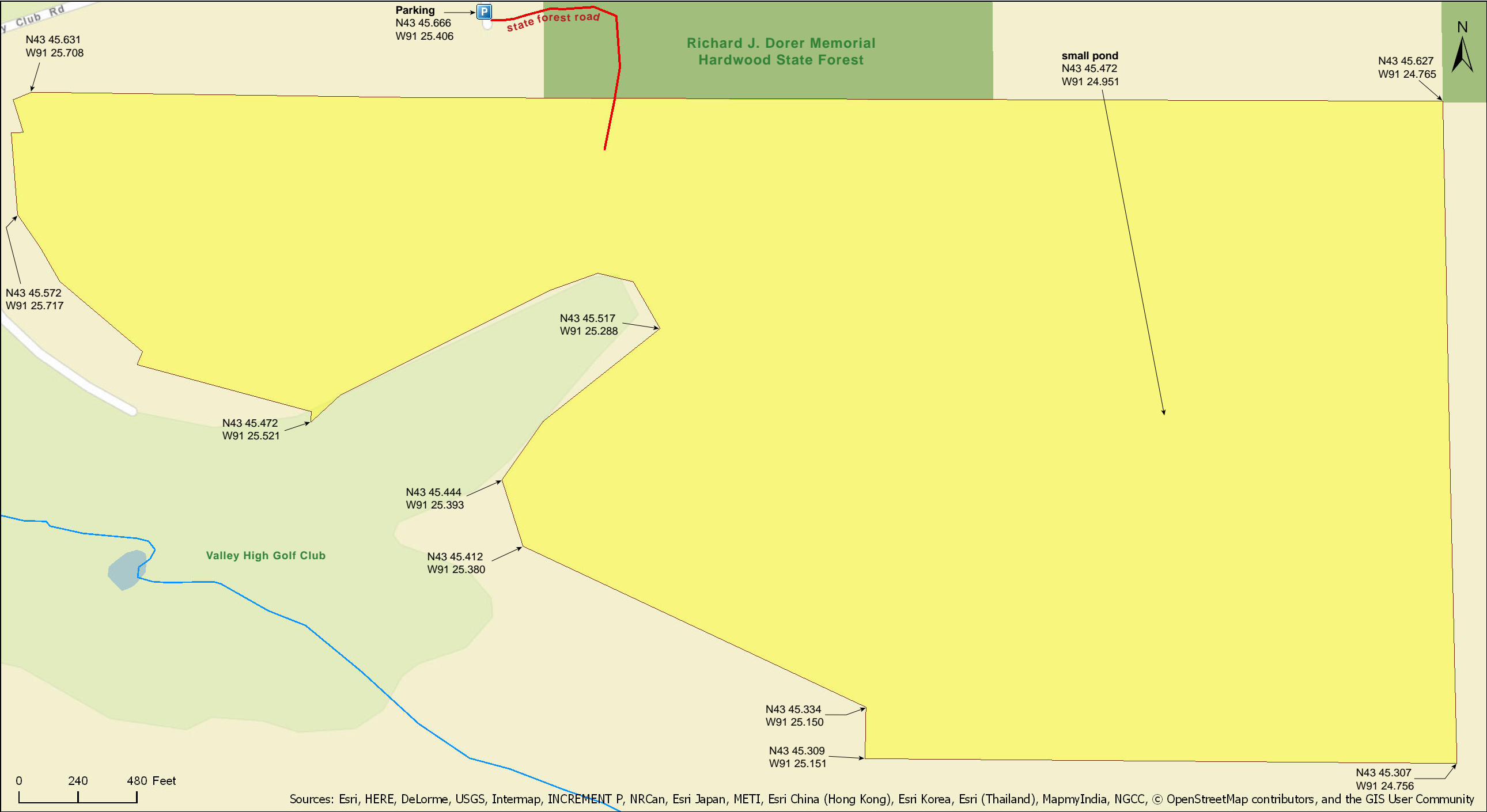
Houston County



Source: Esri, DigitalGlobe, GeoEye, Earthstar Geographics, CNES/Airbus DS, USDA, USGS, AeroGRID, IGN, and the GIS User Community

Mound Prairie SNA
South Unit

Houston County



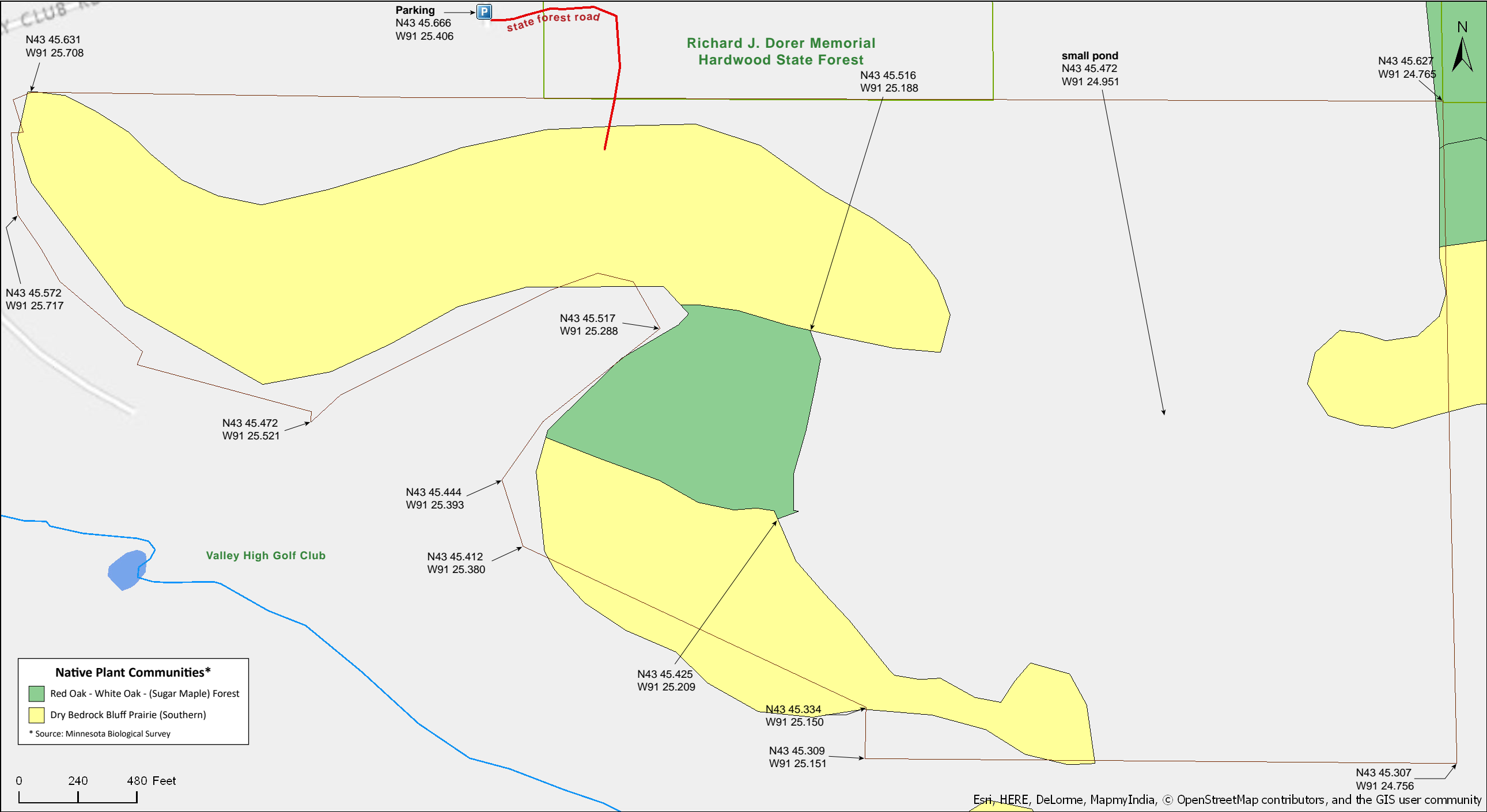
Mound Prairie SNA
South Unit

Houston County

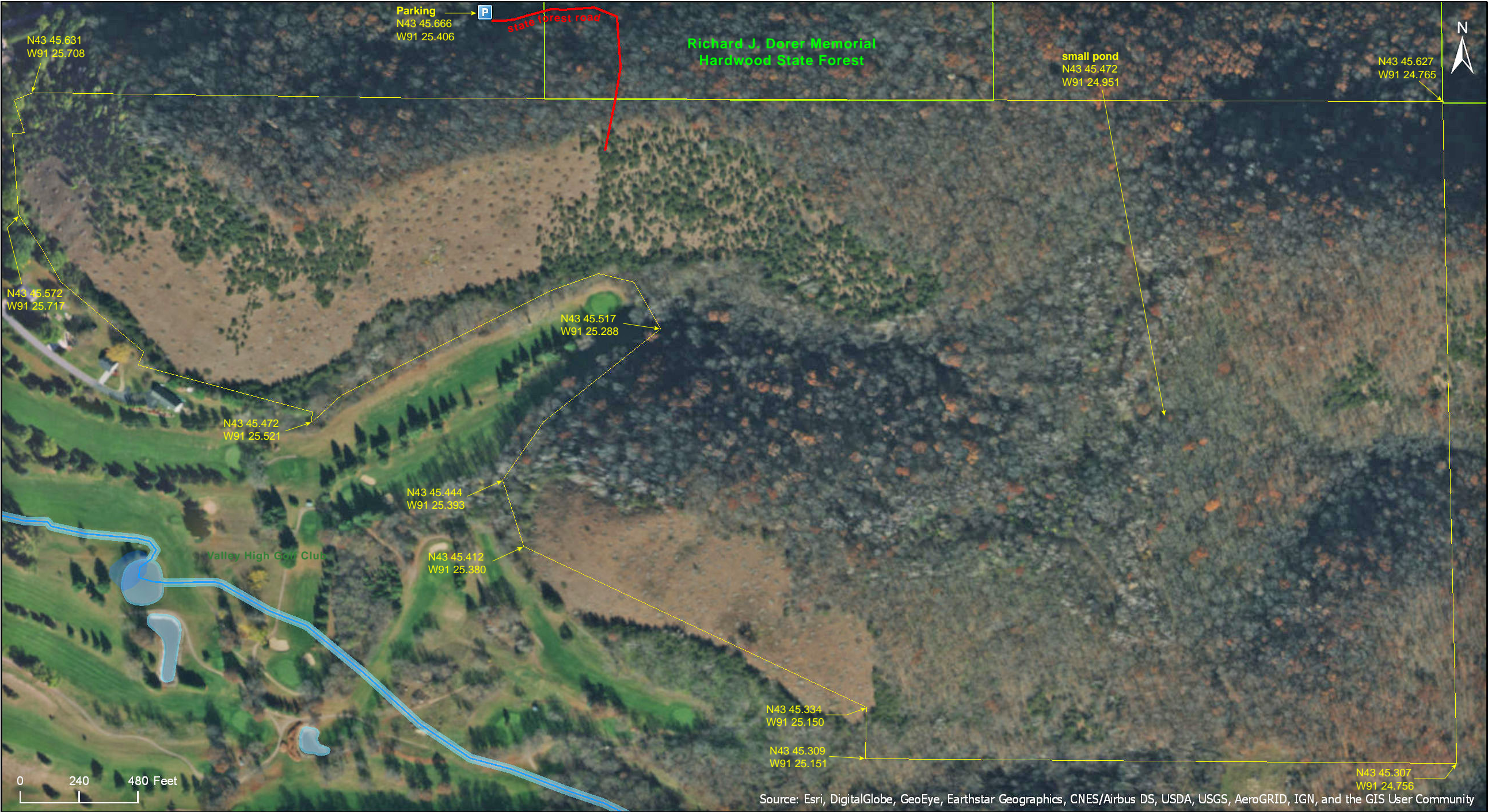


Mound Prairie SNA
South Unit

Houston County



Mound Prairie SNA
South Unit



Source: Esri, DigitalGlobe, GeoEye, Earthstar Geographics, CNES/Airbus DS, USDA, USGS, AeroGRID, IGN, and the GIS User Community

Mound Prairie SNA

South Unit

Directions and Notes from Minnesota DNR

North Unit

Directions: From Hokah 3.5 miles W on MN Hwy 16. Turn NW at Carlson Rd and park in pull-off on W.

Lat/Lon: 43.766605, -91.424359

South Unit

Directions: From Hokah 4 miles W on MN Hwy 16, then 0.1 mile S on Mound Prairie Dr, then 0.6 mile E and S on Golfview Dr. Park at gated dead end and hike forest road E and S into site.

Lat/Lon: 43.761105, -91.42343

This site has no maintained trails or other recreational facilities. This site is in an Audubon Important Bird Area.

Mound Prairie is located within the Richard J. Dorer Memorial Hardwood State Forest, just south of the Root River.

Notes from MinnesotaSeasons.com

Parking

North Unit

N43 45.996, W91 25.462

South Unit

N43 45.666, W91 25.406

Three Units

This SNA consists of three disconnected units. The tiny Central Unit is 2.9 acres of steep bluff prairie. It is 150 yards south of the South Unit parking area on Golfview Dr.

Hiking Trails

Beginning at the South Unit parking spot, a trail follows a forest road east ¼ mile then turns south and enters the SNA. Twenty yards after it turns south look for an orangish-yellow SNA boundary marker a few yards to the left (east). This marks the northern boundary of the SNA. The trail ends here but the forest road continues

south to a gate at the southern boundary of the SNA. A second former forest road branches off of this road near the south gate. It leads northwest then west, following a gradually narrowing ridge. It ends just east of a steep slope with an oak forest to the north and bluff prairie to the south. This second forest road is not maintained and is densely overgrown for most of its length with successional shrubs. It is sometimes easier to follow it from a short distance than to try to walk on it.

DISCLAIMER OF WARRANTIES AND LIMITATIONS OF LIABILITY

MinnesotaSeasons.com, The Nature Conservancy, U.S. Department of Agriculture, Forest Service, U.S. Fish and Wildlife Service, the state of Minnesota, the Minnesota Department of Natural Resources, and their employees, make no representations or warranties, express or implied, with respect to the use of or reliance on the data provided herewith, regardless of its format or means of transmission. There are no guarantees or representations to the user as to the accuracy, currency, completeness, suitability or reliability of this data for any purpose. THE USER ACCEPTS THE DATA AND/OR SOFTWARE "AS IS" AND ASSUMES ALL RISKS ASSOCIATED WITH ITS USE.

IN NO EVENT SHALL MINNESOTASEASONS.COM, TNC, USDA-FS, USFWS, OR MNDNR BE LIABLE FOR ANY DIRECT, INDIRECT, INCIDENTAL, SPECIAL, EXEMPLARY, OR CONSEQUENTIAL DAMAGES (INCLUDING, BUT NOT LIMITED TO, PROCUREMENT OF SUBSTITUTE GOODS OR SERVICES; LOSS OF USE, DATA, OR PROFITS; OR BUSINESS INTERRUPTION) HOWEVER CAUSED AND ON ANY THEORY OF LIABILITY, WHETHER IN CONTRACT, STRICT LIABILITY, OR TORT (INCLUDING NEGLIGENCE OR OTHERS) ARISING IN ANY WAY OUT OF THE USE OF THIS DATA, EVEN IF ADVISED OF THE POSSIBILITY OF SUCH DAMAGE OR FOR ANY CLAIM BY ANY OTHER PARTY.

Your use of the data is acceptance on your part of the terms and conditions set forth herein.