

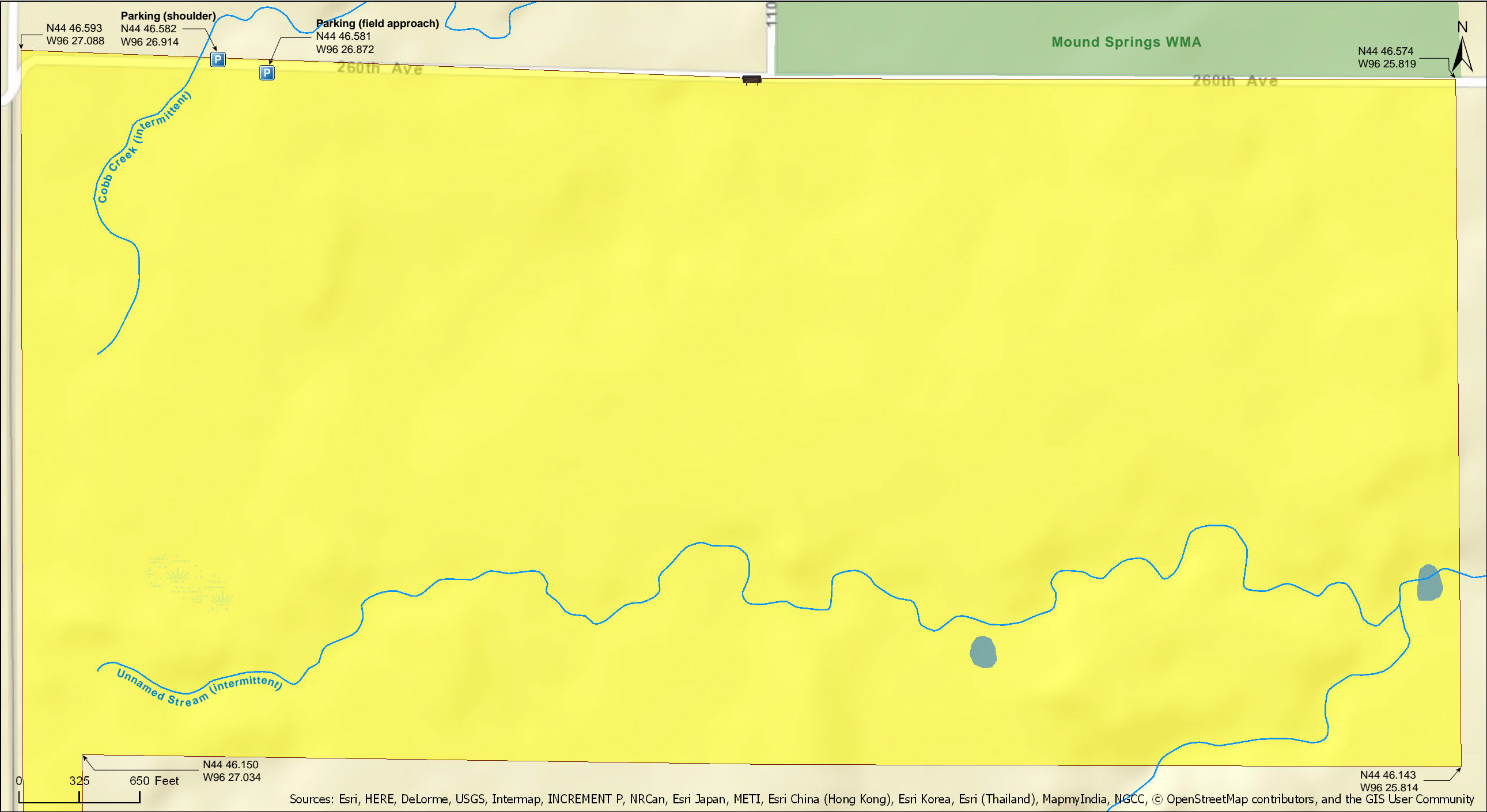
Mound Spring Prairie SNA  
North Unit, North Section

Yellow Medicine County



Mound Spring Prairie SNA  
North Unit, North Section

Yellow Medicine County





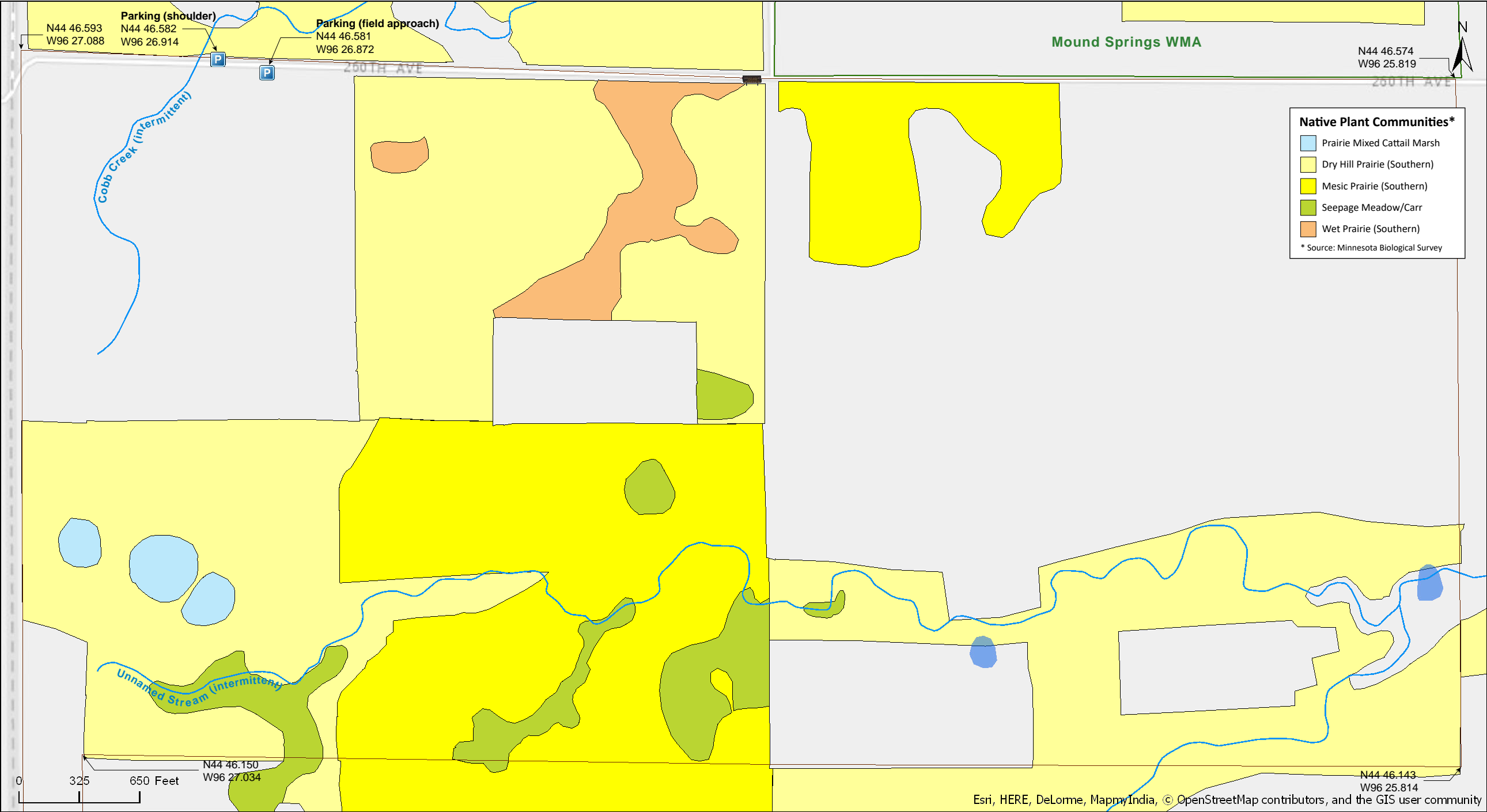
Mound Spring Prairie SNA  
North Unit, North Section

Yellow Medicine County



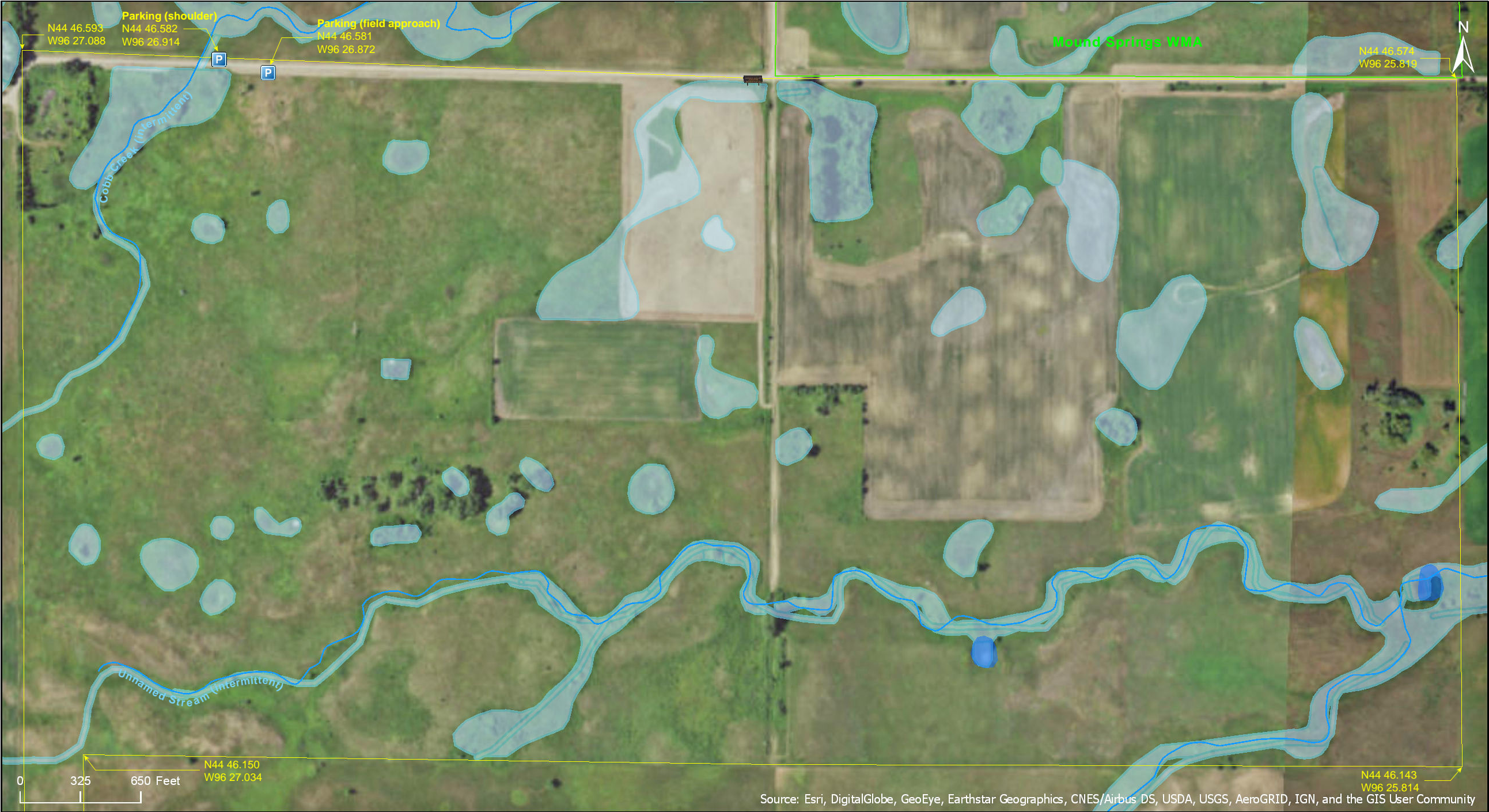
Mound Spring Prairie SNA  
North Unit, North Section

Yellow Medicine County





Mound Spring Prairie SNA  
North Unit, North Section



# Mound Spring Prairie SNA

## North Unit, North Section

### Directions and Notes from Minnesota DNR

#### North Unit, North Section

**Directions:** From Gary, South Dakota 0.5 mile E on MN Co Rd 4, then 1 mile S on 110th St, then 0.4 mile W on 260th St. Park on S road shoulder.

**Lat/Lon:** 44.776368, -96.448569

#### North Unit, South Section

**Directions:** From Gary, South Dakota 1.5 mile E on MN Co Rd 4, then 2 miles S on Co Rd 15, then 1 mile W on 250th Ave, then 0.3 mile S on 110th St. Park on W road shoulder.

**Lat/Lon:** 44.757247, -96.440426

#### South Unit

**Directions:** From Gary, South Dakota 1.5 mile E on MN Co Rd 4, then 3 miles S on Co Rd 15, 0.5 mile W on Co Rd E3, then 0.4 mile S on 155th St. Park in pull-off on E.

**Lat/Lon:** 44.740872, -96.430078

This site has no maintained trails or other recreational facilities. This site is in an Audubon Important Bird Area. Mound Spring WMA is adjacent to this site.

### Notes from MinnesotaSeasons.com

#### Parking

##### North Unit, North Section (260th Ave.)

N44 46.581, W96 26.872

Pull off the road onto the field approach on the south side of 260th Ave. 0.37 mile west of 110th St.

##### North Unit, South Section (110th St.)

N44 45.435, W96 26.426

##### South Unit

N44 44.453, W96 25.805

### DISCLAIMER OF WARRANTIES AND LIMITATIONS OF LIABILITY

MinnesotaSeasons.com, The Nature Conservancy, U.S. Department of Agriculture, Forest Service, U.S. Fish and Wildlife Service, the state of Minnesota, the Minnesota Department of Natural Resources, and their employees, make no representations or warranties, express or implied, with respect to the use of or reliance on the data provided herewith, regardless of its format or means of transmission. There are no guarantees or representations to the user as to the accuracy, currency, completeness, suitability or reliability of this data for any purpose. THE USER ACCEPTS THE DATA AND/OR SOFTWARE "AS IS" AND ASSUMES ALL RISKS ASSOCIATED WITH ITS USE.

IN NO EVENT SHALL MINNESOTASEASONS.COM, TNC, USDA-FS, USFWS, OR MNDNR BE LIABLE FOR ANY DIRECT, INDIRECT, INCIDENTAL, SPECIAL, EXEMPLARY, OR CONSEQUENTIAL DAMAGES (INCLUDING, BUT NOT LIMITED TO, PROCUREMENT OF SUBSTITUTE GOODS OR SERVICES; LOSS OF USE, DATA, OR PROFITS; OR BUSINESS INTERRUPTION) HOWEVER CAUSED AND ON ANY THEORY OF LIABILITY, WHETHER IN CONTRACT, STRICT LIABILITY, OR TORT (INCLUDING NEGLIGENCE OR OTHERS) ARISING IN ANY WAY OUT OF THE USE OF THIS DATA, EVEN IF ADVISED OF THE POSSIBILITY OF SUCH DAMAGE OR FOR ANY CLAIM BY ANY OTHER PARTY.

Your use of the data is acceptance on your part of the terms and conditions set forth herein.