

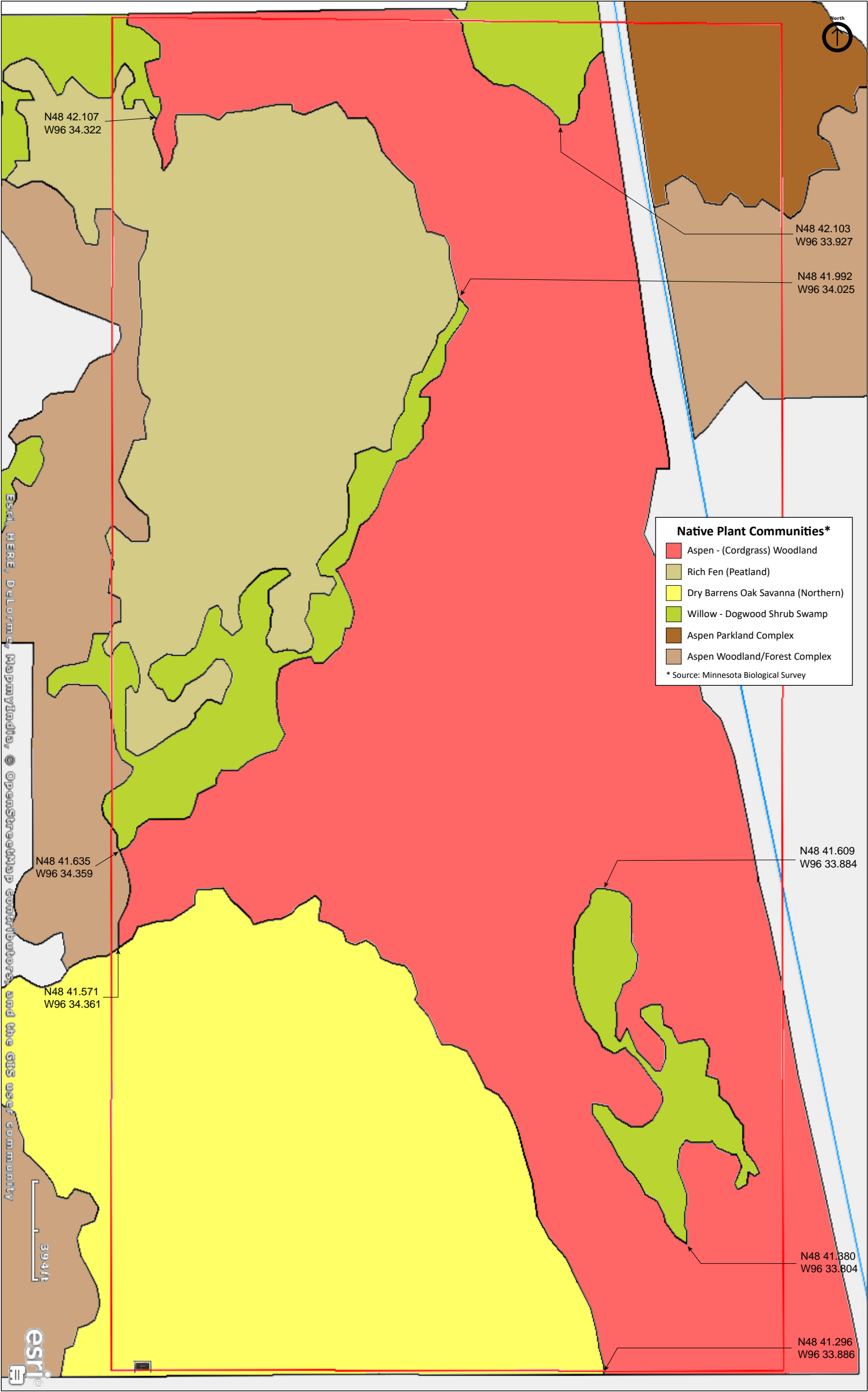


Norway Dunes

Kittson County









Norway Dunes

Directions and Notes from The Nature Conservancy

From Halma, go east on County Road 7 for about eight-tenths of a mile, and turn north onto a gravel road. Continue for two miles and pull over to the side where a dirt road heads west. A grassy two-track trail heads east. Follow it for one-half a mile to the mailbox in the southwest corner of the preserve.

Notes from MinnesotaSeasons.com

Parking

N48 41.304, W96 35.018

There is no designated parking area. What appears to have been at one time a designated parking area is located near the sign and mailbox. However, the access to the area was blocked in 2011—it appears intentionally— by a downed quaking aspen. In addition, the directions on the Nature Conservancy Web site suggest parking on the township road.

Park on the shoulder on the east side of Township Road T-289 at the GPS location above (Parking). Walk east on the mowed, two-track road there. There are “No Trespassing” signs on each side of the mowed road. Where the mowed road veers north continue walking straight east through the unmowed meadow. The southwest corner of the preserve is ½ mile from the township road. There is a wood sign identifying the nature preserve and a mailbox with a visitor’s log there.

DISCLAIMER OF WARRANTIES AND LIMITATIONS OF LIABILITY

MinnesotaSeasons.com, The Nature Conservancy, U.S. Department of Agriculture, Forest Service, U.S. Fish and Wildlife Service, the state of Minnesota, the Minnesota Department of Natural Resources, and their employees, make no representations or warranties, express or implied, with respect to the use of or reliance on the data provided herewith, regardless of its format or means of transmission. There are no guarantees or representations to the user as to the accuracy, currency, completeness, suitability or reliability of this data for any purpose. THE USER ACCEPTS THE DATA AND/OR SOFTWARE "AS IS" AND ASSUMES ALL RISKS ASSOCIATED WITH ITS USE.

IN NO EVENT SHALL MINNESOTASEASONS.COM, TNC, USDA-FS, USFWS, OR MNDNR BE LIABLE FOR ANY DIRECT, INDIRECT, INCIDENTAL, SPECIAL, EXEMPLARY, OR CONSEQUENTIAL DAMAGES (INCLUDING, BUT NOT LIMITED TO, PROCUREMENT OF SUBSTITUTE GOODS OR SERVICES; LOSS OF USE, DATA, OR PROFITS; OR BUSINESS INTERRUPTION) HOWEVER CAUSED AND ON ANY THEORY OF LIABILITY, WHETHER IN CONTRACT, STRICT LIABILITY, OR TORT (INCLUDING NEGLIGENCE OR OTHERS) ARISING IN ANY WAY OUT OF THE USE OF THIS DATA, EVEN IF ADVISED OF THE POSSIBILITY OF SUCH DAMAGE OR FOR ANY CLAIM BY ANY OTHER PARTY.

Your use of the data is acceptance on your part of the terms and conditions set forth herein.