

Ordway Prairie South Section

Pope County



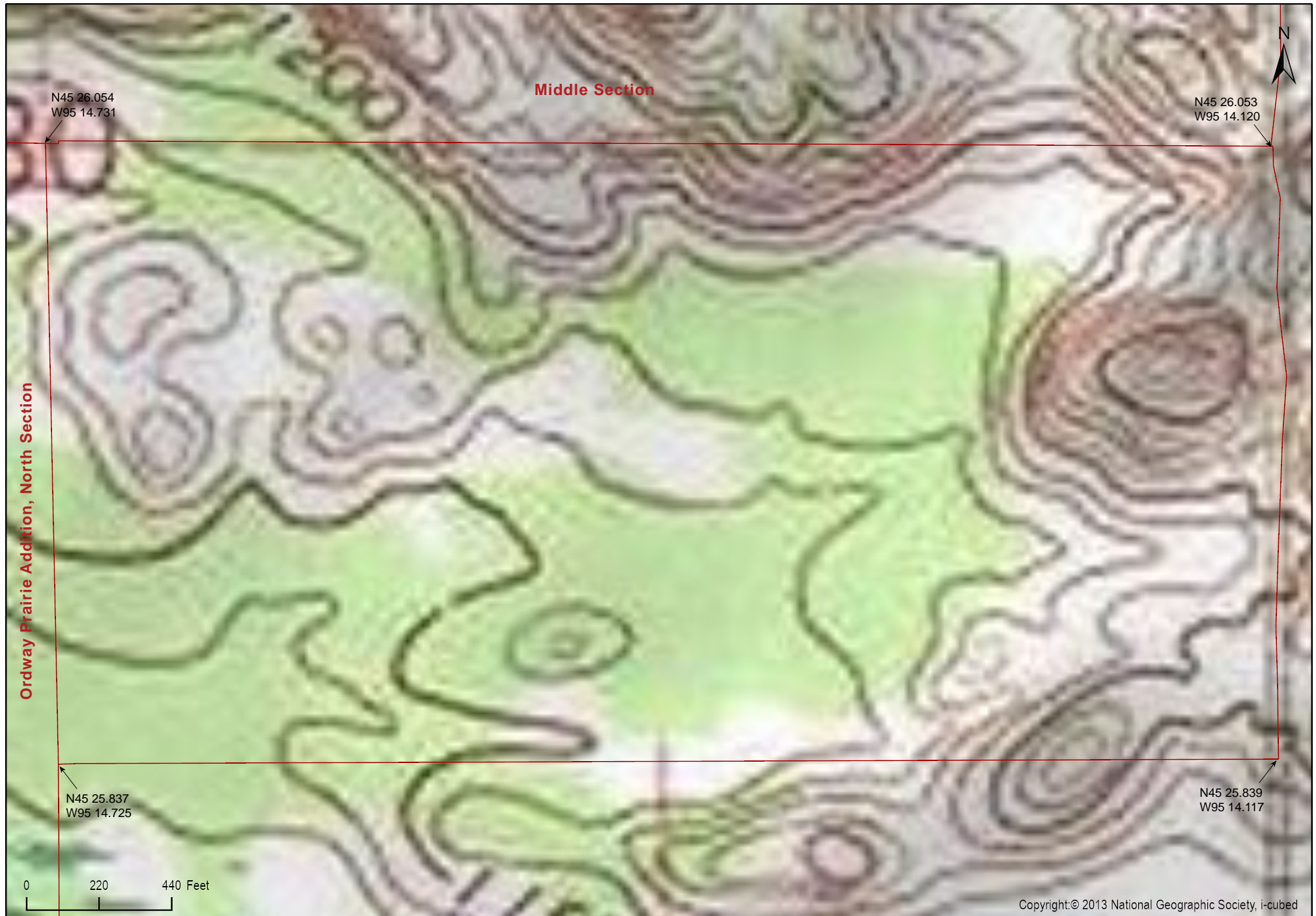
Ordway Prairie South Section

Pope County



Ordway Prairie South Section

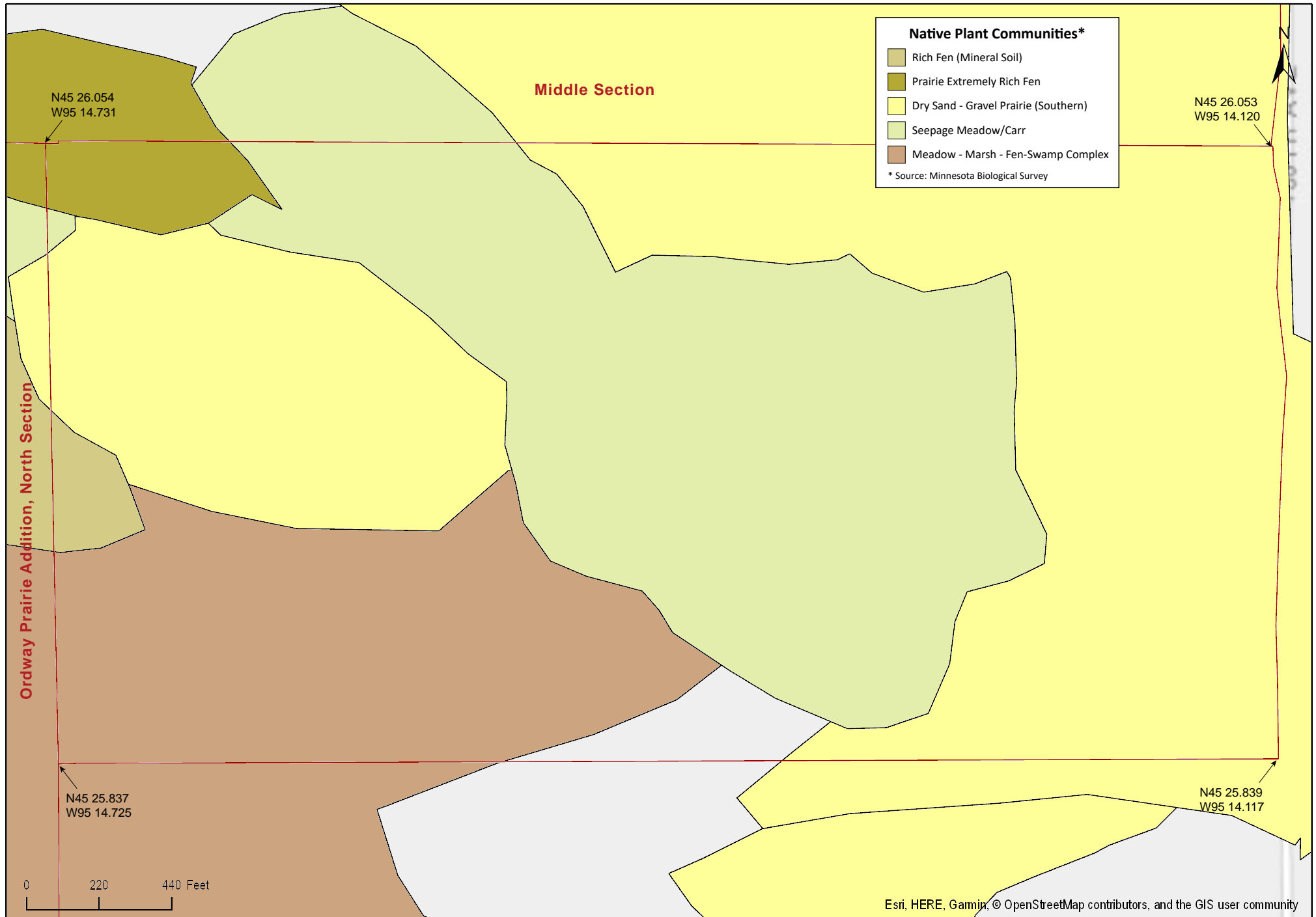
Pope County



Copyright:© 2013 National Geographic Society, i-cubed

Ordway Prairie South Section

Pope County



Ordway Prairie South Section



Source: Esri, DigitalGlobe, GeoEye, Earthstar Geographics, CNES/Airbus DS, USDA, USGS, AeroGRID, IGN, and the GIS User Community

Ordway Prairie South Section

Directions and Notes from The Nature Conservancy

Directions

From Brooten:

- Take County Road 8 west about seven miles, then turn south onto State Highway 104.
- Go south three miles to the northwest corner of the preserve (on the east side of the road).
- Continue a short distance to a pull-off for a historical marker. Park there to see the preserve.

Nearest services are six miles south in Sunburg, seven miles northeast in Brooten, or northwest in Glenwood. Also nearby are the Wildlife Management Areas of Oleander and Little Jo to the southeast and Skarpness and Bargar to the north.

Notes from MinnesotaSeasons.com

Parking

Roadside Park

There is a roadside park on the east side of MN Hwy 104 near the northwest corner of the preserve. The parking lot has room for several cars.

N45 26.710, W95 15.240

Field Access

There are two field accesses on the east side of MN Hwy 104 at the west boundary of the preserve. Park on a field access.

N45 26.415, W95 15.298

N45 26.160, W95 15.296

DISCLAIMER OF WARRANTIES AND LIMITATIONS OF LIABILITY

MinnesotaSeasons.com, The Nature Conservancy, U.S. Department of Agriculture, Forest Service, U.S. Fish and Wildlife Service, the state of Minnesota, the Minnesota Department of Natural Resources, and their employees, make no representations or warranties, express or implied, with respect to the use of or reliance on the data provided herewith, regardless of its format or means of transmission. There are no guarantees or representations to the user as to the accuracy, currency, completeness, suitability or reliability of this data for any purpose. THE USER ACCEPTS THE DATA AND/OR SOFTWARE "AS IS" AND ASSUMES ALL RISKS ASSOCIATED WITH ITS USE.

IN NO EVENT SHALL MINNESOTASEASONS.COM, TNC, USDA-FS, USFWS, OR MNDNR BE LIABLE FOR ANY DIRECT, INDIRECT, INCIDENTAL, SPECIAL, EXEMPLARY, OR CONSEQUENTIAL DAMAGES (INCLUDING, BUT NOT LIMITED TO, PROCUREMENT OF SUBSTITUTE GOODS OR SERVICES; LOSS OF USE, DATA, OR PROFITS; OR BUSINESS INTERRUPTION) HOWEVER CAUSED AND ON ANY THEORY OF LIABILITY, WHETHER IN CONTRACT, STRICT LIABILITY, OR TORT (INCLUDING NEGLIGENCE OR OTHERWISE) ARISING IN ANY WAY OUT OF THE USE OF THIS DATA, EVEN IF ADVISED OF THE POSSIBILITY OF SUCH DAMAGE OR FOR ANY CLAIM BY ANY OTHER PARTY.

Your use of the data is acceptance on your part of the terms and conditions set forth herein.