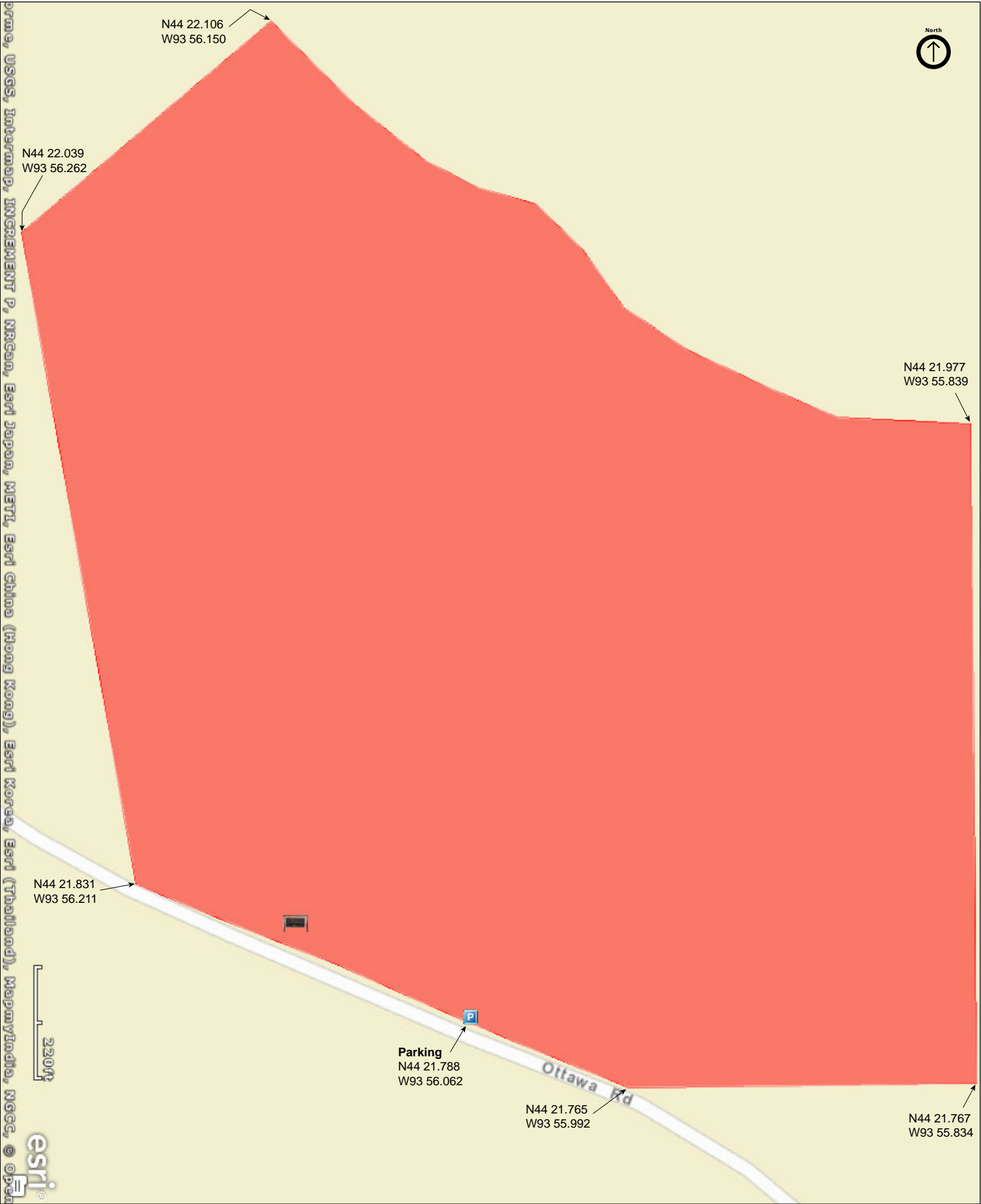




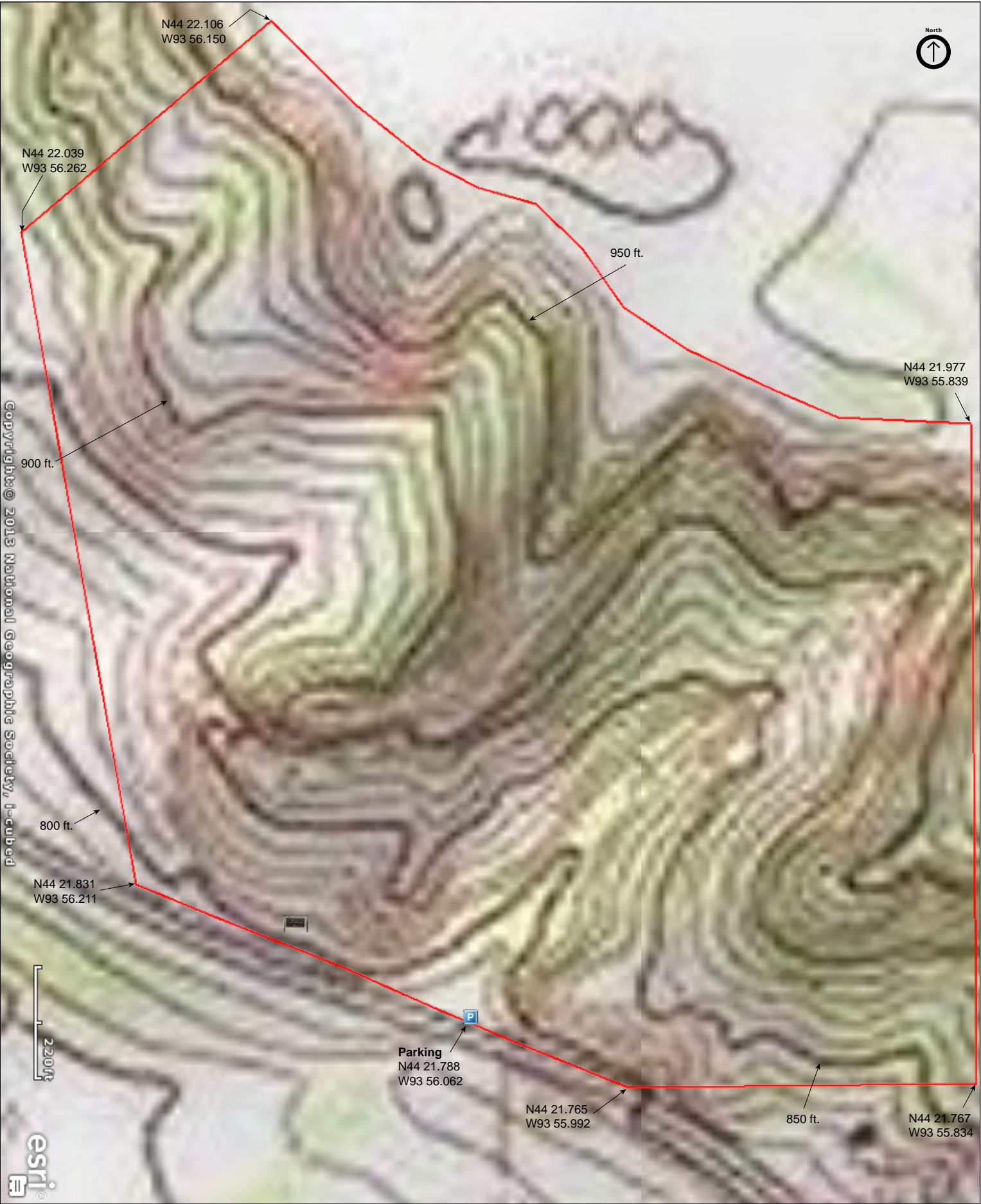
Ottawa Bluffs

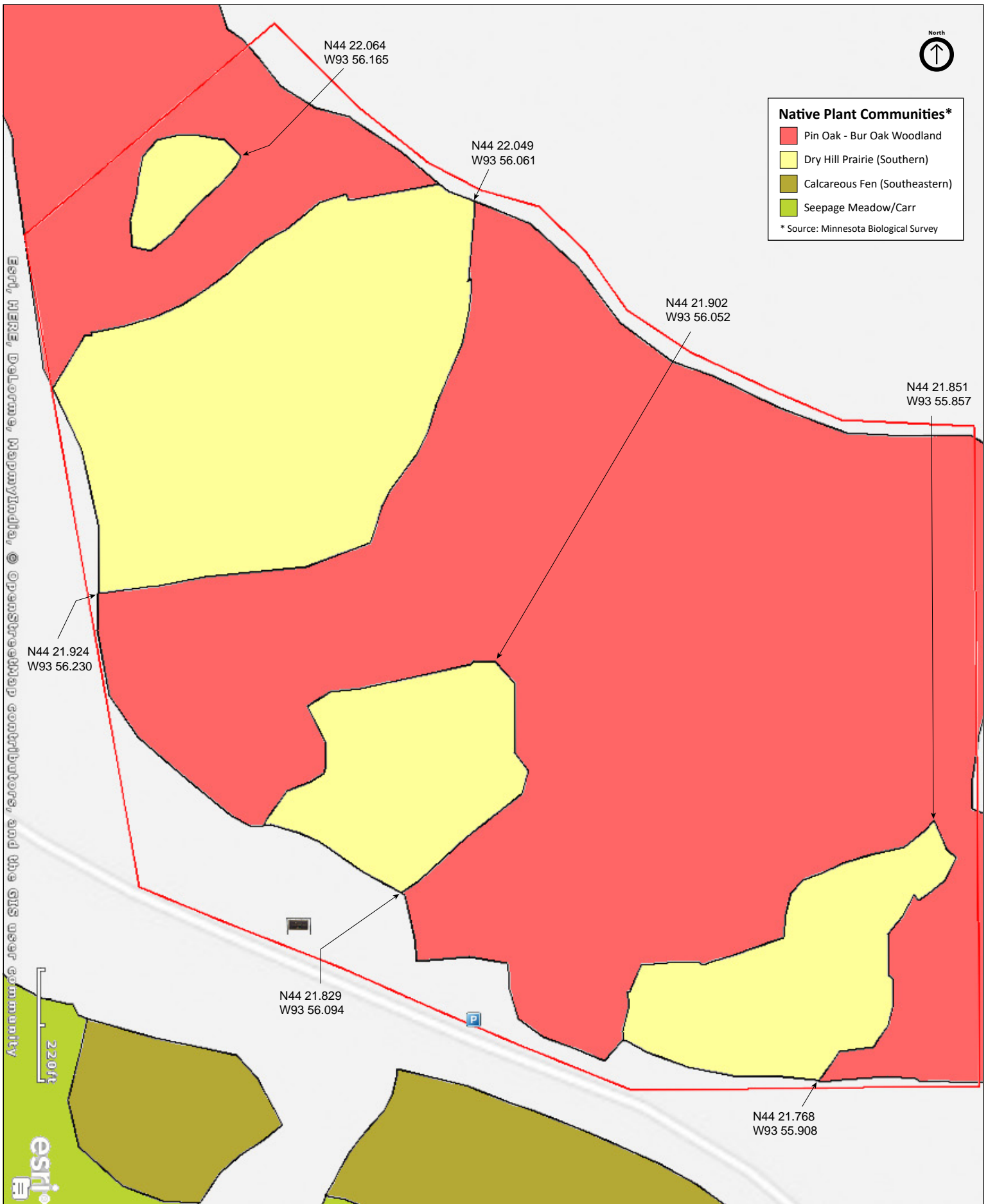
Le Sueur County



Ottawa Bluffs

Le Sueur County







Ottawa Bluffs

Directions and Notes from The Nature Conservancy

From St. Peter, go east on Highway 99 for about one mile. Turn left on County Road 23. After about four miles, look on the right for the small yellow and green Conservancy boundary marker signs, and for a green mailbox which holds preserve information. Park along the edge of the road. Nearest services are in St. Peter.

Please respect the Indian mound and do not disturb it. Consider that, when the mound was constructed (hundreds of years ago), the countryside was a mixture of prairie, oak savanna, and woodland, in all directions.

...volunteers have been working at Ottawa Bluffs to remove trees and brush from selected areas, and to bring the role of fire back to the woody areas of the preserve. This work consists mostly of cutting eastern red cedar and European buckthorn.

Notes from MinnesotaSeasons.com

Parking

N44 21.788, W93 56.062

There are no maintained trails.

A well-worn footpath leads from the kiosk and parking spot through the woods to a cornfield at the top of the bluff.

DISCLAIMER OF WARRANTIES AND LIMITATIONS OF LIABILITY

MinnesotaSeasons.com, The Nature Conservancy, U.S. Department of Agriculture, Forest Service, U.S. Fish and Wildlife Service, the state of Minnesota, the Minnesota Department of Natural Resources, and their employees, make no representations or warranties, express or implied, with respect to the use of or reliance on the data provided herewith, regardless of its format or means of transmission. There are no guarantees or representations to the user as to the accuracy, currency, completeness, suitability or reliability of this data for any purpose. THE USER ACCEPTS THE DATA AND/OR SOFTWARE "AS IS" AND ASSUMES ALL RISKS ASSOCIATED WITH ITS USE.

IN NO EVENT SHALL MINNESOTASEASONS.COM, TNC, USDA-FS, USFWS, OR MNDNR BE LIABLE FOR ANY DIRECT, INDIRECT, INCIDENTAL, SPECIAL, EXEMPLARY, OR CONSEQUENTIAL DAMAGES (INCLUDING, BUT NOT LIMITED TO, PROCUREMENT OF SUBSTITUTE GOODS OR SERVICES; LOSS OF USE, DATA, OR PROFITS; OR BUSINESS INTERRUPTION) HOWEVER CAUSED AND ON ANY THEORY OF LIABILITY, WHETHER IN CONTRACT, STRICT LIABILITY, OR TORT (INCLUDING NEGLIGENCE OR OTHERS) ARISING IN ANY WAY OUT OF THE USE OF THIS DATA, EVEN IF ADVISED OF THE POSSIBILITY OF SUCH DAMAGE OR FOR ANY CLAIM BY ANY OTHER PARTY.

Your use of the data is acceptance on your part of the terms and conditions set forth herein.