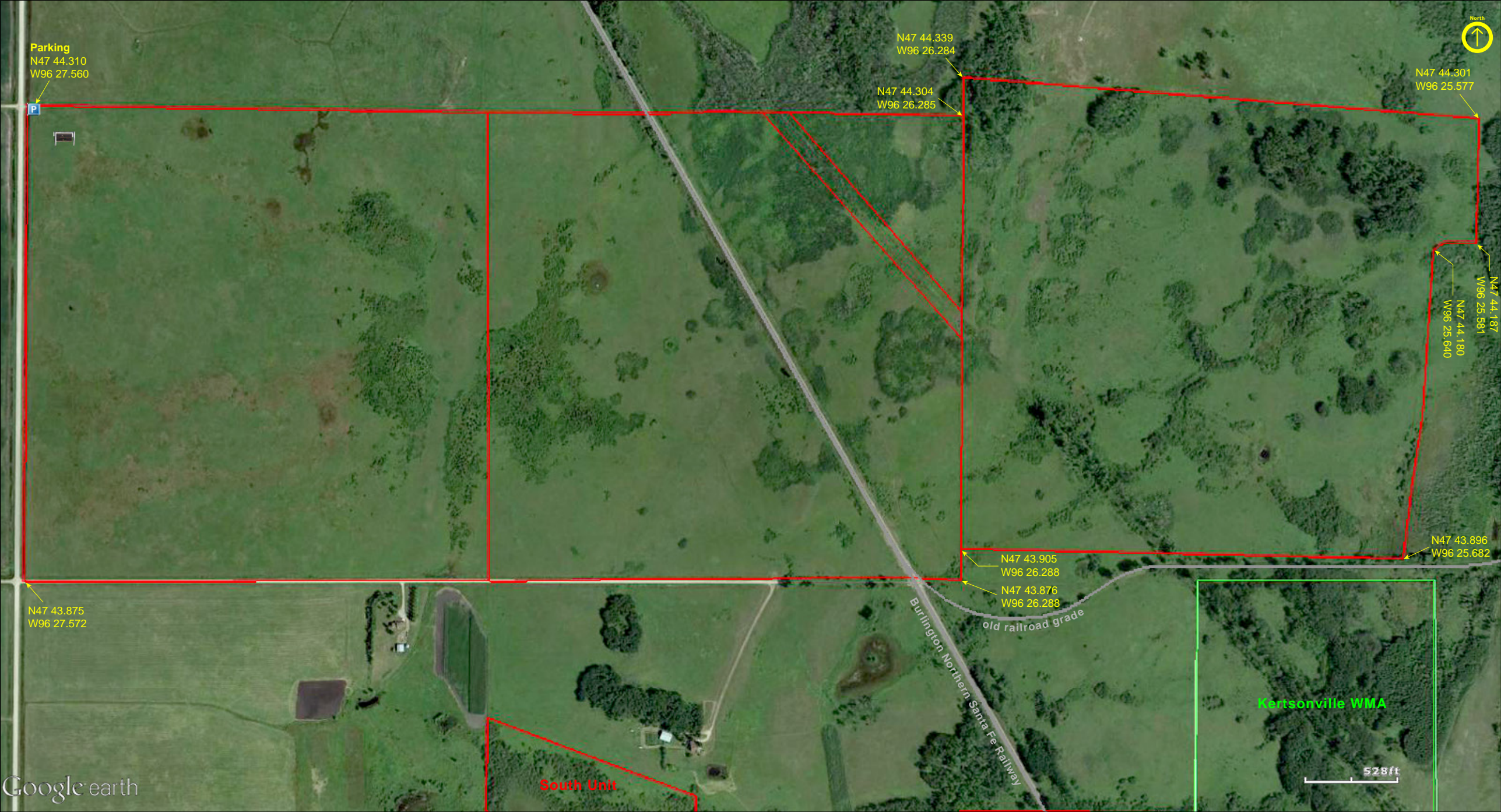


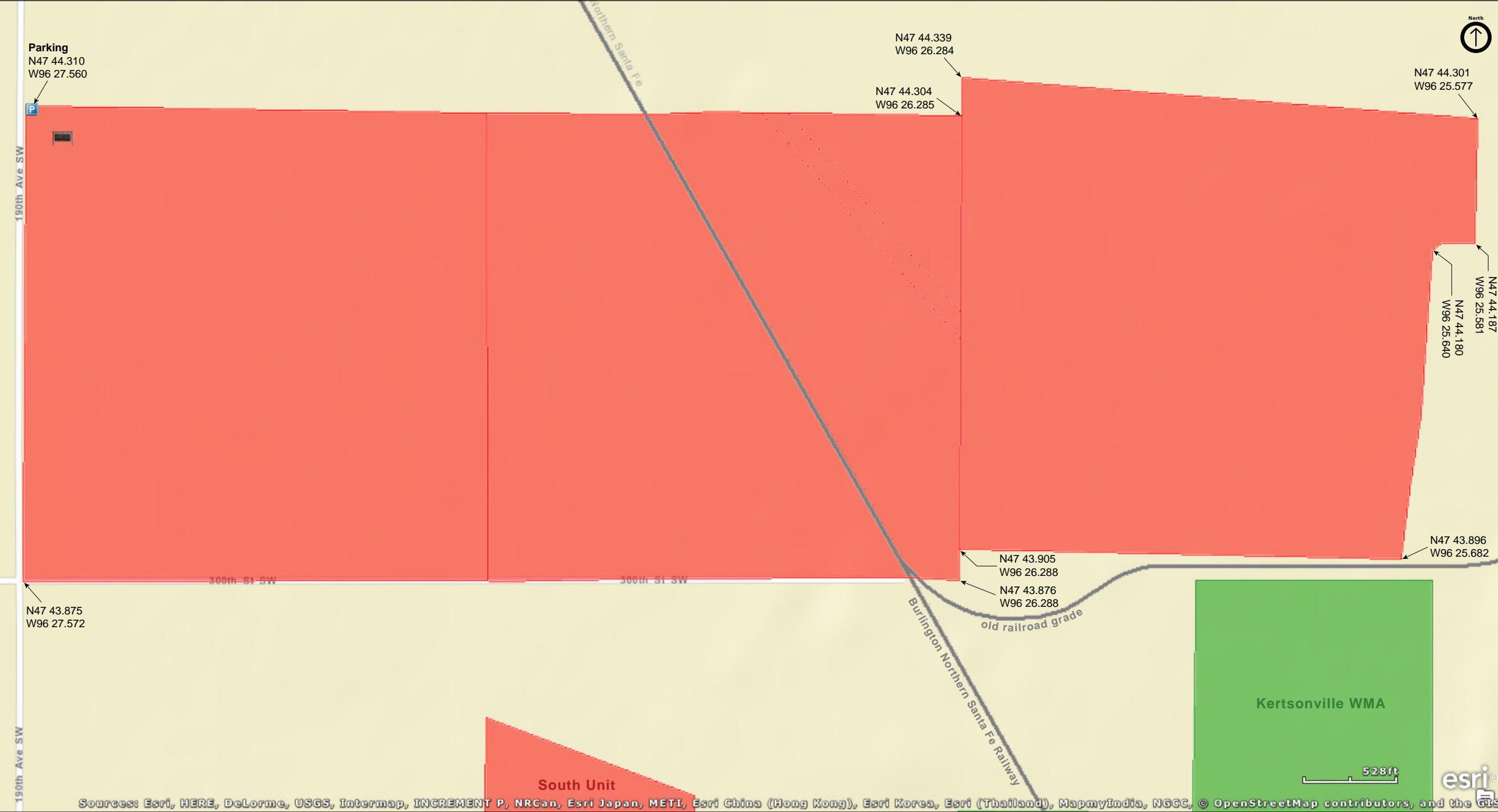
Pankratz Memorial Prairie
North Unit

Polk County



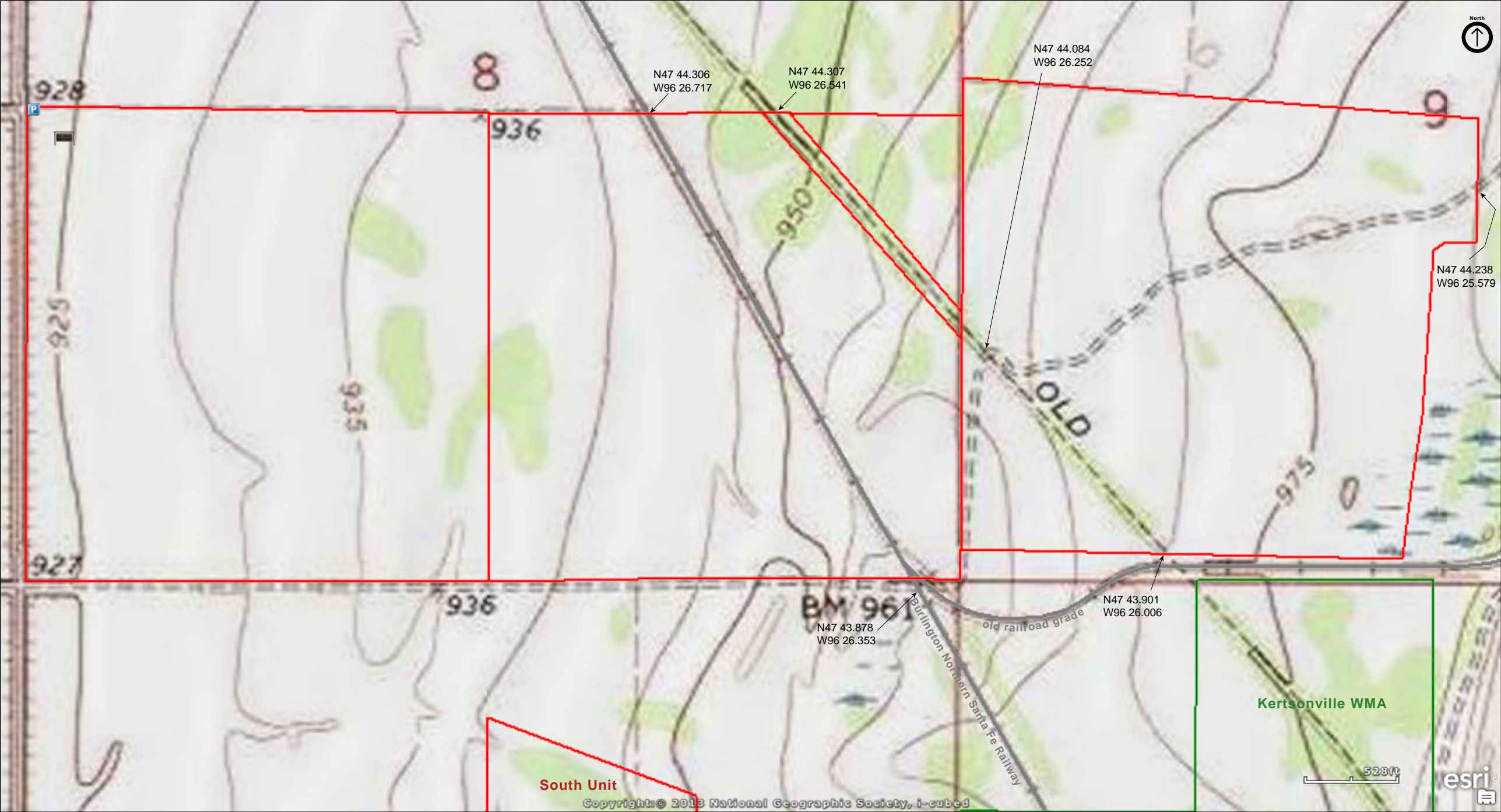
Pankratz Memorial Prairie
North Unit

Polk County



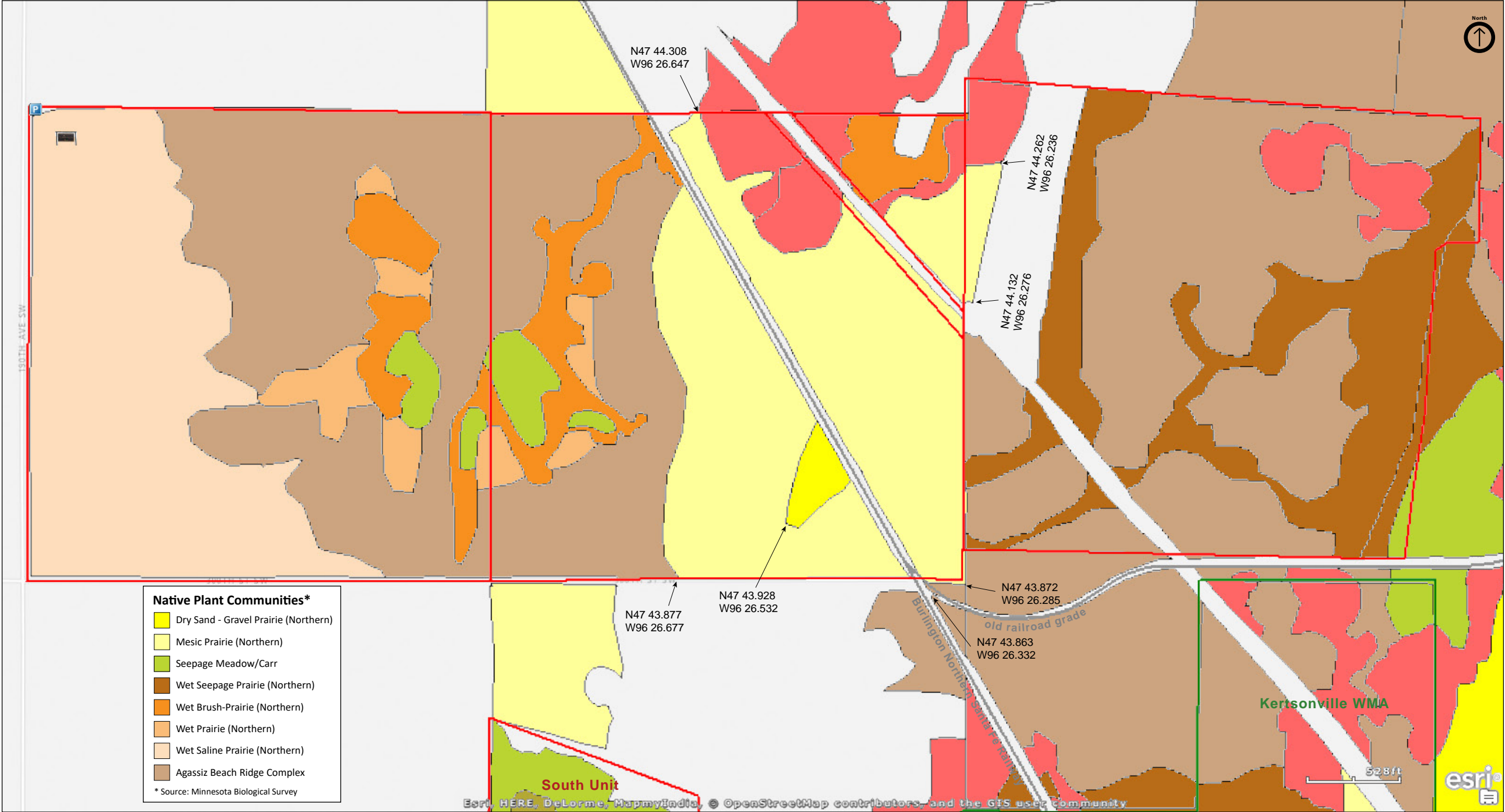
Pankratz Memorial Prairie
North Unit

Polk County

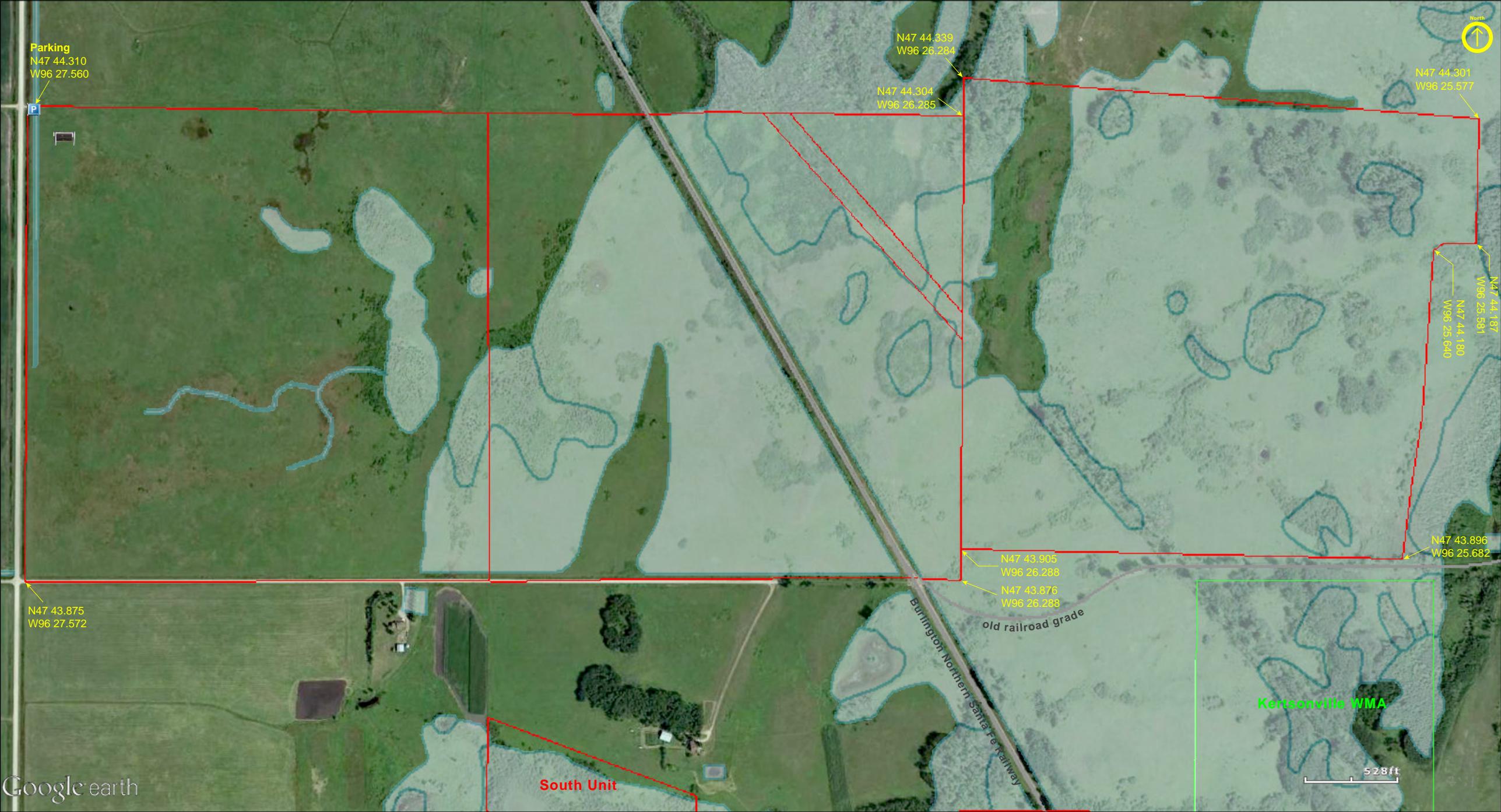


Pankratz Memorial Prairie
North Unit

Polk County



Pankratz Memorial Prairie
North Unit



Pankratz Memorial Prairie North Unit

Directions and Notes from The Nature Conservancy

To visit the north unit: From Crookston, drive east on U.S. Highway 2 for six miles to the intersection with County Road 46. Turn south and travel one-and-a-half miles to reach the west corner of the unit. To park, turn east onto the gravel road by the preserve sign. Please do not block the township road. The boulder rubbed smooth by buffalo is located here, near the center.

Pankratz is made of two tracts of land - a 468-acre north unit and a 452-acre south unit. It is five miles from the Conservancy's largest prairie-wetland restoration project in U.S. history - Glacial Ridge.

Herds of buffalo roamed this sandy soil, polishing smooth a large glacial boulder with the weight of their bodies. This boulder stands as a testament to pre-settlement times.

Notes from MinnesotaSeasons.com

Parking

N47 44.310, W96 27.560

DISCLAIMER OF WARRANTIES AND LIMITATIONS OF LIABILITY

MinnesotaSeasons.com, The Nature Conservancy, U.S. Department of Agriculture, Forest Service, U.S. Fish and Wildlife Service, the state of Minnesota, the Minnesota Department of Natural Resources, and their employees, make no representations or warranties, express or implied, with respect to the use of or reliance on the data provided herewith, regardless of its format or means of transmission. There are no guarantees or representations to the user as to the accuracy, currency, completeness, suitability or reliability of this data for any purpose. THE USER ACCEPTS THE DATA AND/OR SOFTWARE "AS IS" AND ASSUMES ALL RISKS ASSOCIATED WITH ITS USE.

IN NO EVENT SHALL MINNESOTASEASONS.COM, TNC, USDA-FS, USFWS, OR MNDNR BE LIABLE FOR ANY DIRECT, INDIRECT, INCIDENTAL, SPECIAL, EXEMPLARY, OR CONSEQUENTIAL DAMAGES (INCLUDING, BUT NOT LIMITED TO, PROCUREMENT OF SUBSTITUTE GOODS OR SERVICES; LOSS OF USE, DATA, OR PROFITS; OR BUSINESS INTERRUPTION) HOWEVER CAUSED AND ON ANY THEORY OF LIABILITY, WHETHER IN CONTRACT, STRICT LIABILITY, OR TORT (INCLUDING NEGLIGENCE OR OTHERS) ARISING IN ANY WAY OUT OF THE USE OF THIS DATA, EVEN IF ADVISED OF THE POSSIBILITY OF SUCH DAMAGE OR FOR ANY CLAIM BY ANY OTHER PARTY.

Your use of the data is acceptance on your part of the terms and conditions set forth herein.