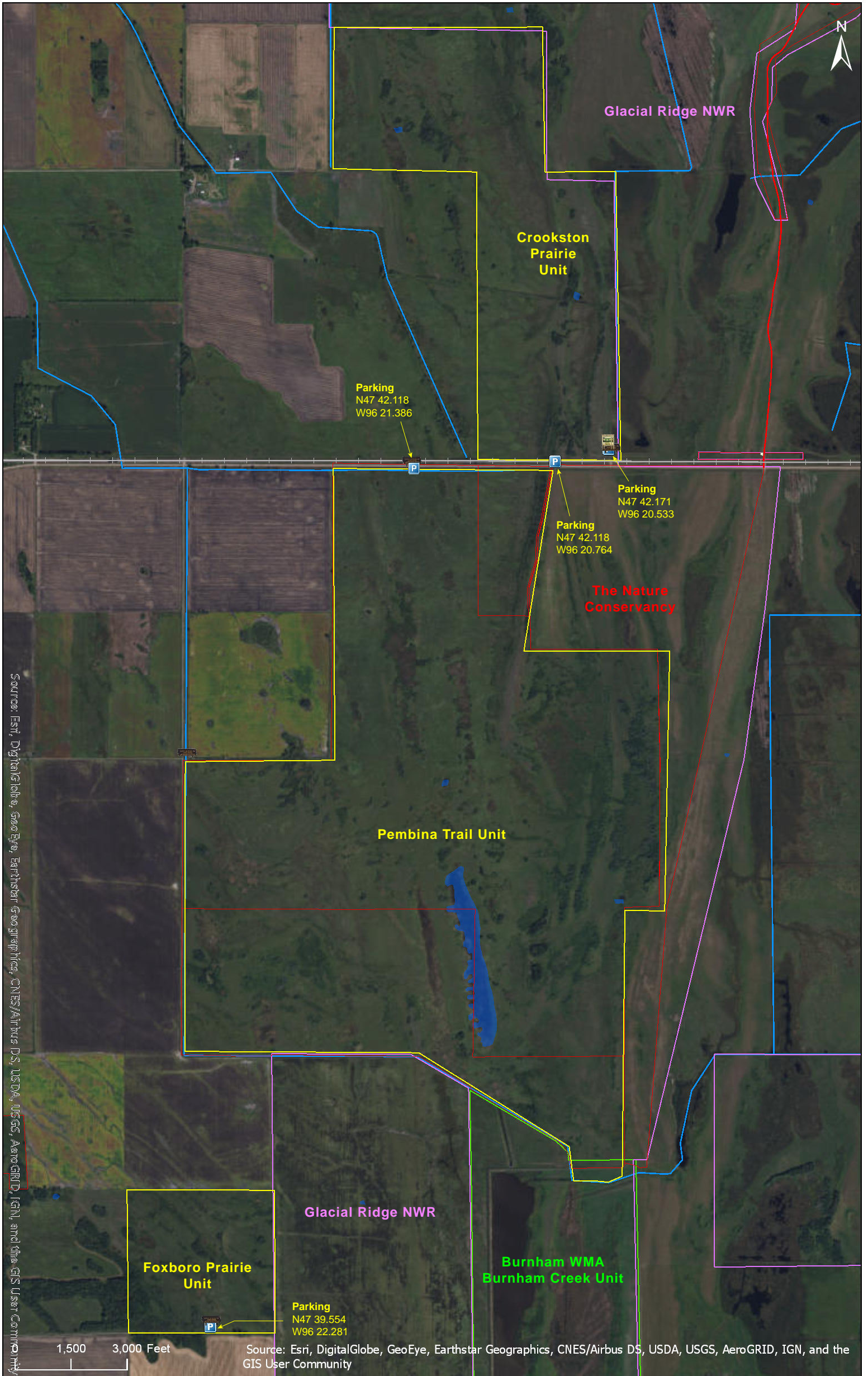


Pembina Trail Preserve SNA

Polk County

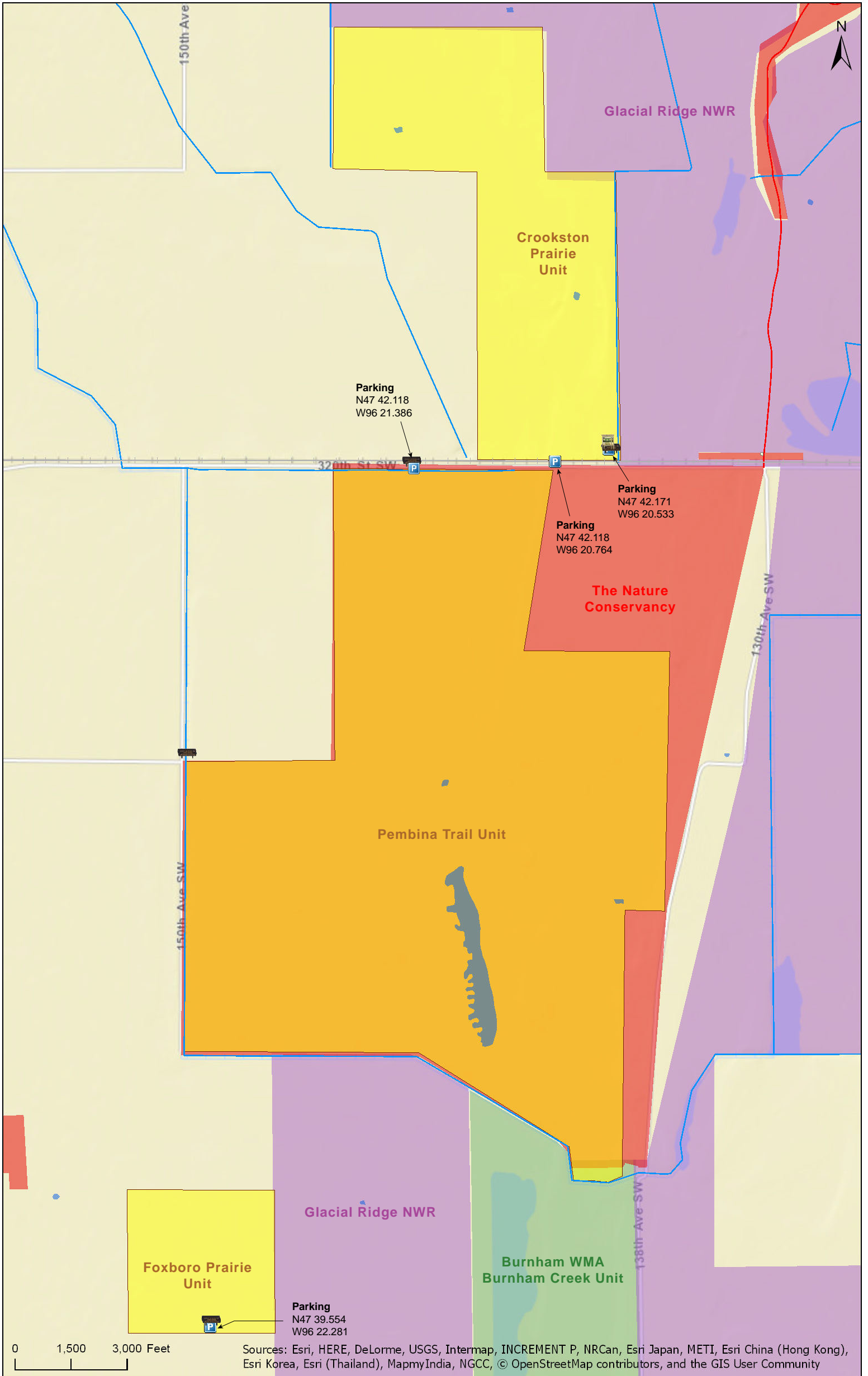


Source: Esri, DigitalGlobe, GeoEye, Earthstar Geographics, CNES/Airbus DS, USDA, USGS, AeroGRID, IGN, and the GIS User Community

Source: Esri, DigitalGlobe, GeoEye, Earthstar Geographics, CNES/Airbus DS, USDA, USGS, AeroGRID, IGN, and the GIS User Community

Pembina Trail Preserve SNA

Polk County



Pembina Trail Preserve SNA

Directions and Notes from Minnesota DNR (All Units)

Directions: From Mentor 10 miles W on Co Hwy 45. Park in pull-off on S.

Lat/Lon: 47.701965, -96.346064

This site has no maintained trails or other recreational facilities. This site is in an Audubon Important Bird Area and Watchable Wildlife Viewing Area. Glacial Ridge National Wildlife Refuge and Burnham WMA are adjacent to this site.

Directions and Notes from The Nature Conservancy

From Crookston, take State Highway 102 southeast to the intersection with County Road 45. Turn east (left) and drive for six-and-a-half miles. Watch for The Nature Conservancy signs on the right side of the road. Park at the entrance of an old field road that formerly led into the preserve. There is a large wooden sign marking the access.

From Fertile, take State Highway 32 north to the intersection with County Road 45. Turn west (left) on County Road 45 and drive for 4 miles. Park at the entrance of an old field road that formerly led into the preserve. There is a large wooden sign marking the access.

Notes from MinnesotaSeasons.com

Parking

Pembina Trail Unit

Old Field Road

N47 42.118, W96 20.764

Field Access

N47 42.118, W96 21.386

Park on the field access or at the old field road on the south side of County Road 45 (320th St. SW), at the locations shown above.

Crookston Unit

N47 42.171, W96 20.533

From County Road 45 (320th St. SW) turn north onto a gravel road. The road crosses the railroad tracks and ends after 70 yards at a small parking area, where there is an information kiosk and informational display.

Foxboro Unit

N47 39.554, W96 22.281

From County Road 44 (160th Ave. SW) turn east on 350th St. SW, a minimum maintenance road. Park at the end of the road at the location shown above (Parking).

DISCLAIMER OF WARRANTIES AND LIMITATIONS OF LIABILITY

MinnesotaSeasons.com, The Nature Conservancy, U.S. Department of Agriculture, Forest Service, U.S. Fish and Wildlife Service, the state of Minnesota, the Minnesota Department of Natural Resources, and their employees, make no representations or warranties, express or implied, with respect to the use of or reliance on the data provided herewith, regardless of its format or means of transmission. There are no guarantees or representations to the user as to the accuracy, currency, completeness, suitability or reliability of this data for any purpose. THE USER ACCEPTS THE DATA AND/OR SOFTWARE "AS IS" AND ASSUMES ALL RISKS ASSOCIATED WITH ITS USE.

IN NO EVENT SHALL MINNESOTASEASONS.COM, TNC, USDA-FS, USFWS, OR MNDNR BE LIABLE FOR ANY DIRECT, INDIRECT, INCIDENTAL, SPECIAL, EXEMPLARY, OR CONSEQUENTIAL DAMAGES (INCLUDING, BUT NOT LIMITED TO, PROCUREMENT OF SUBSTITUTE GOODS OR SERVICES; LOSS OF USE, DATA, OR PROFITS; OR BUSINESS INTERRUPTION) HOWEVER CAUSED AND ON ANY THEORY OF LIABILITY, WHETHER IN CONTRACT, STRICT LIABILITY, OR TORT (INCLUDING NEGLIGENCE OR OTHERS) ARISING IN ANY WAY OUT OF THE USE OF THIS DATA, EVEN IF ADVISED OF THE POSSIBILITY OF SUCH DAMAGE OR FOR ANY CLAIM BY ANY OTHER PARTY.

Your use of the data is acceptance on your part of the terms and conditions set forth herein.