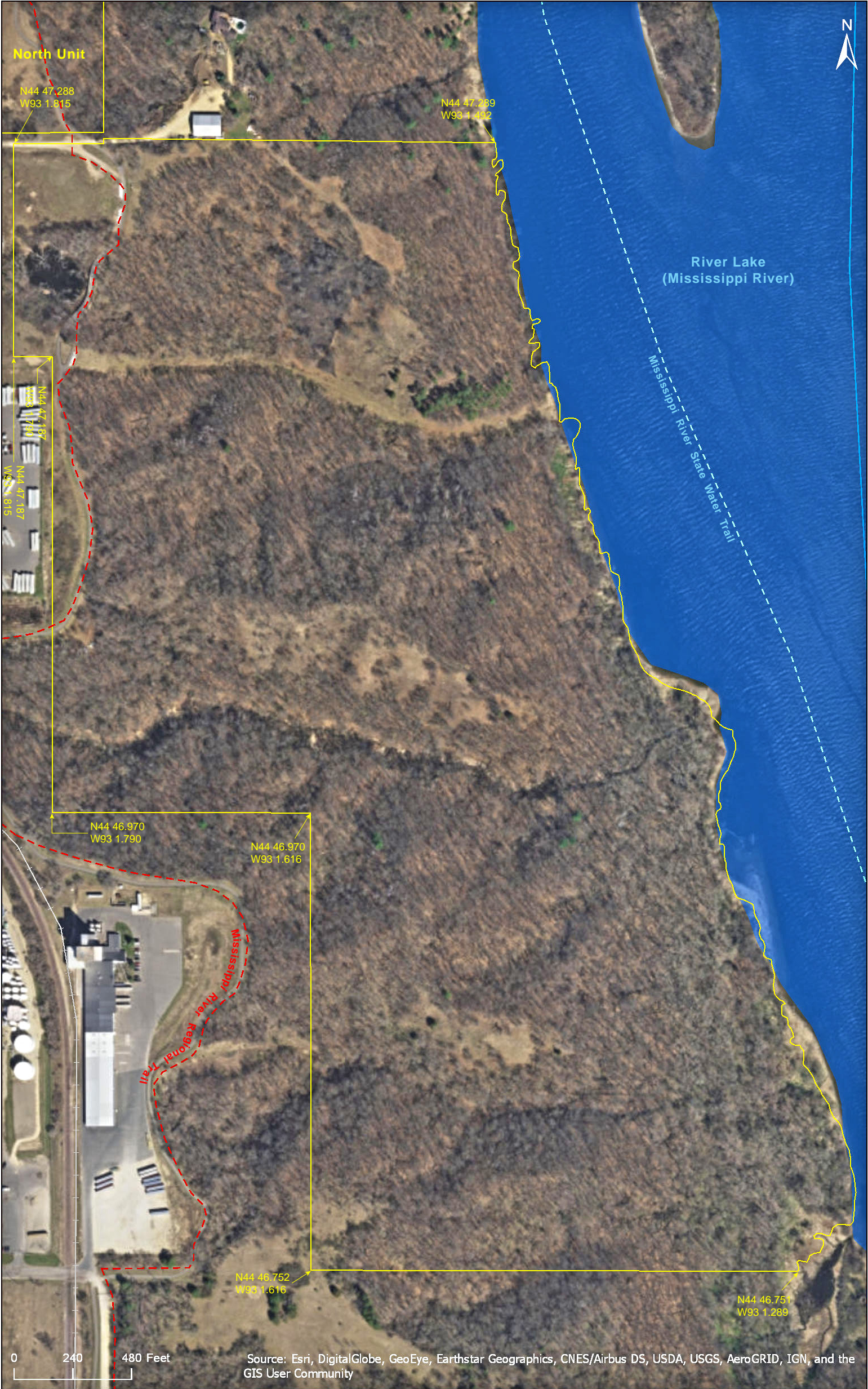


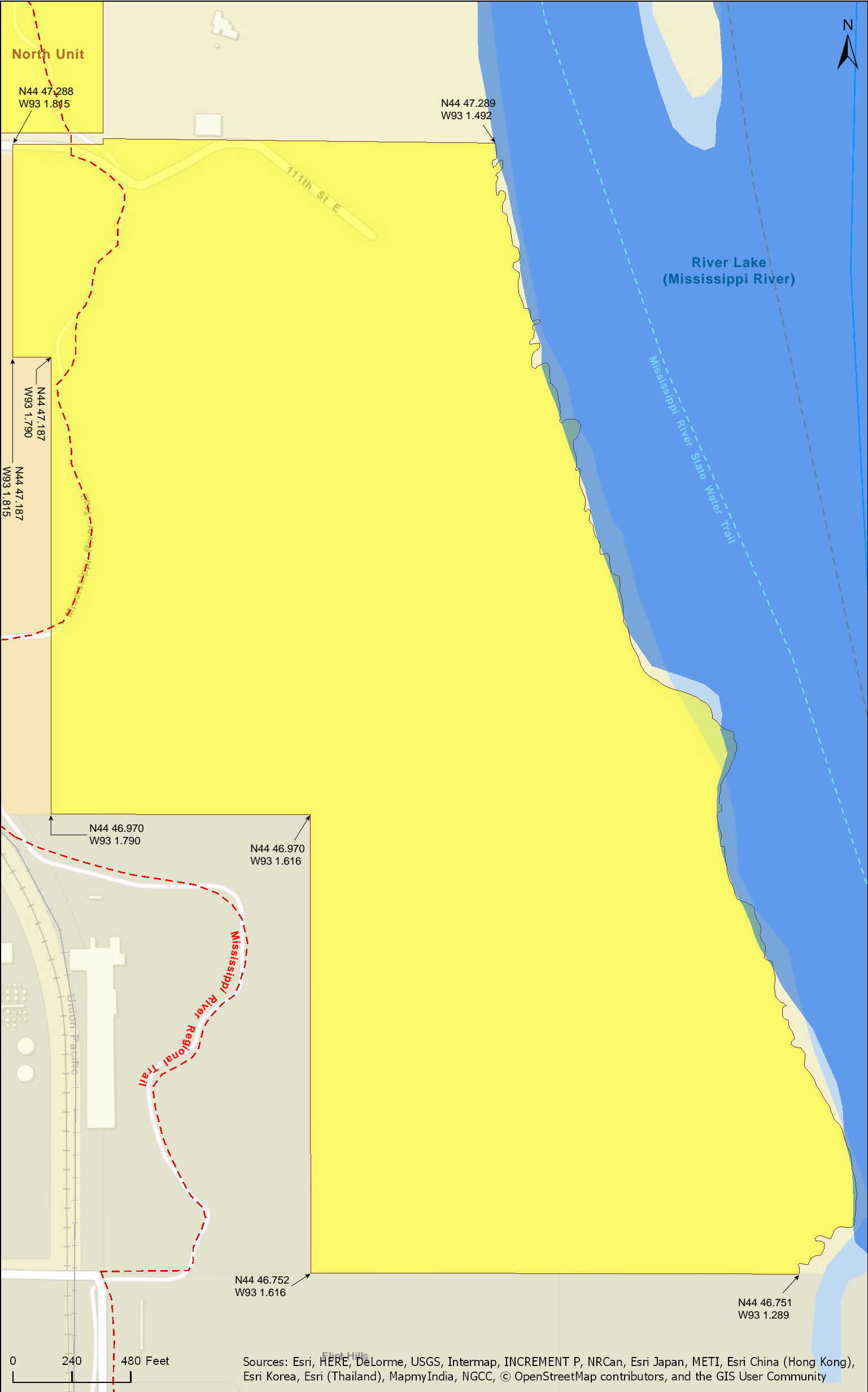
Pine Bend Bluffs SNA
South Unit

Dakota County



Pine Bend Bluffs SNA
South Unit

Dakota County



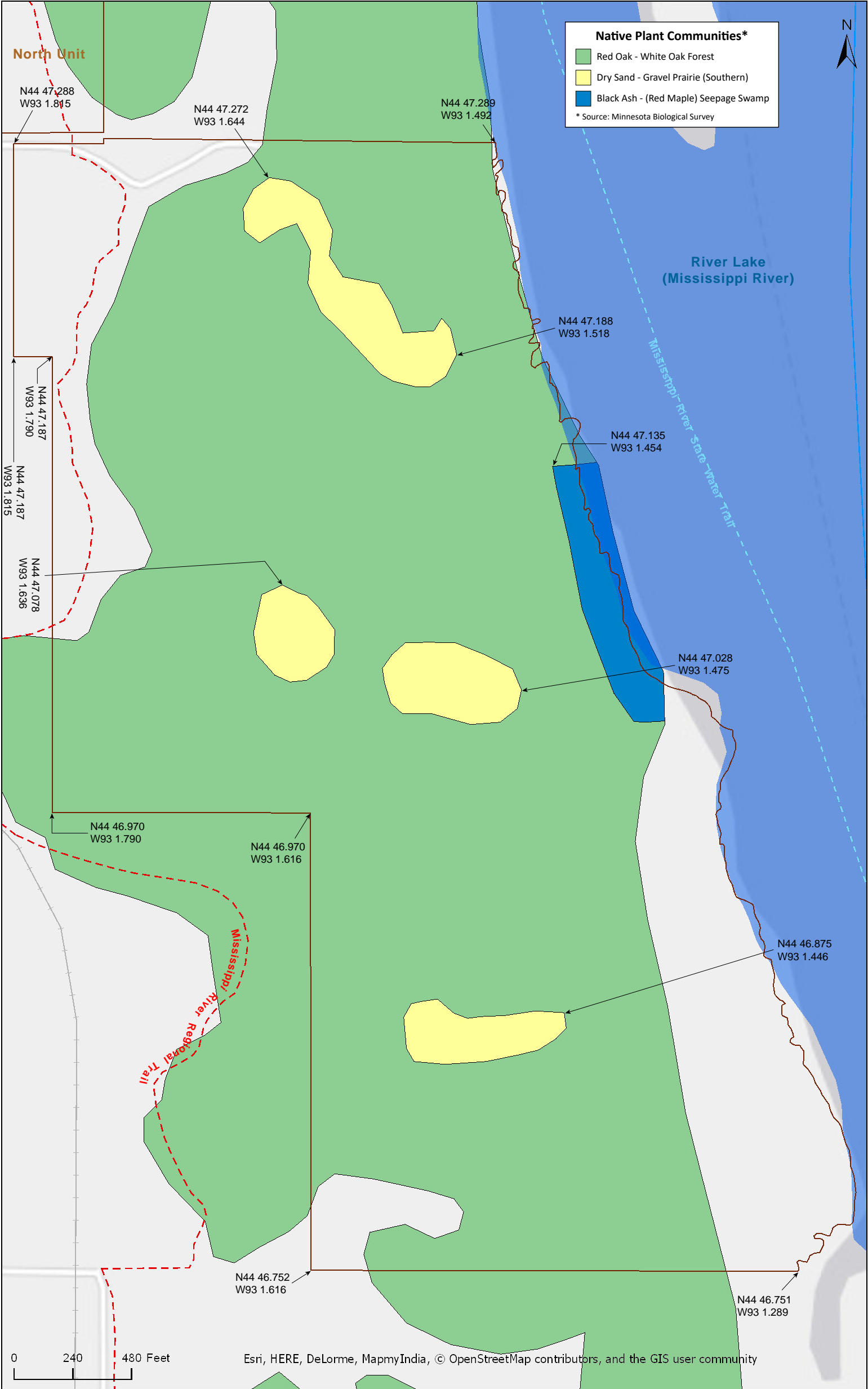
Pine Bend Bluffs SNA
South Unit

Dakota County



Pine Bend Bluffs SNA
South Unit

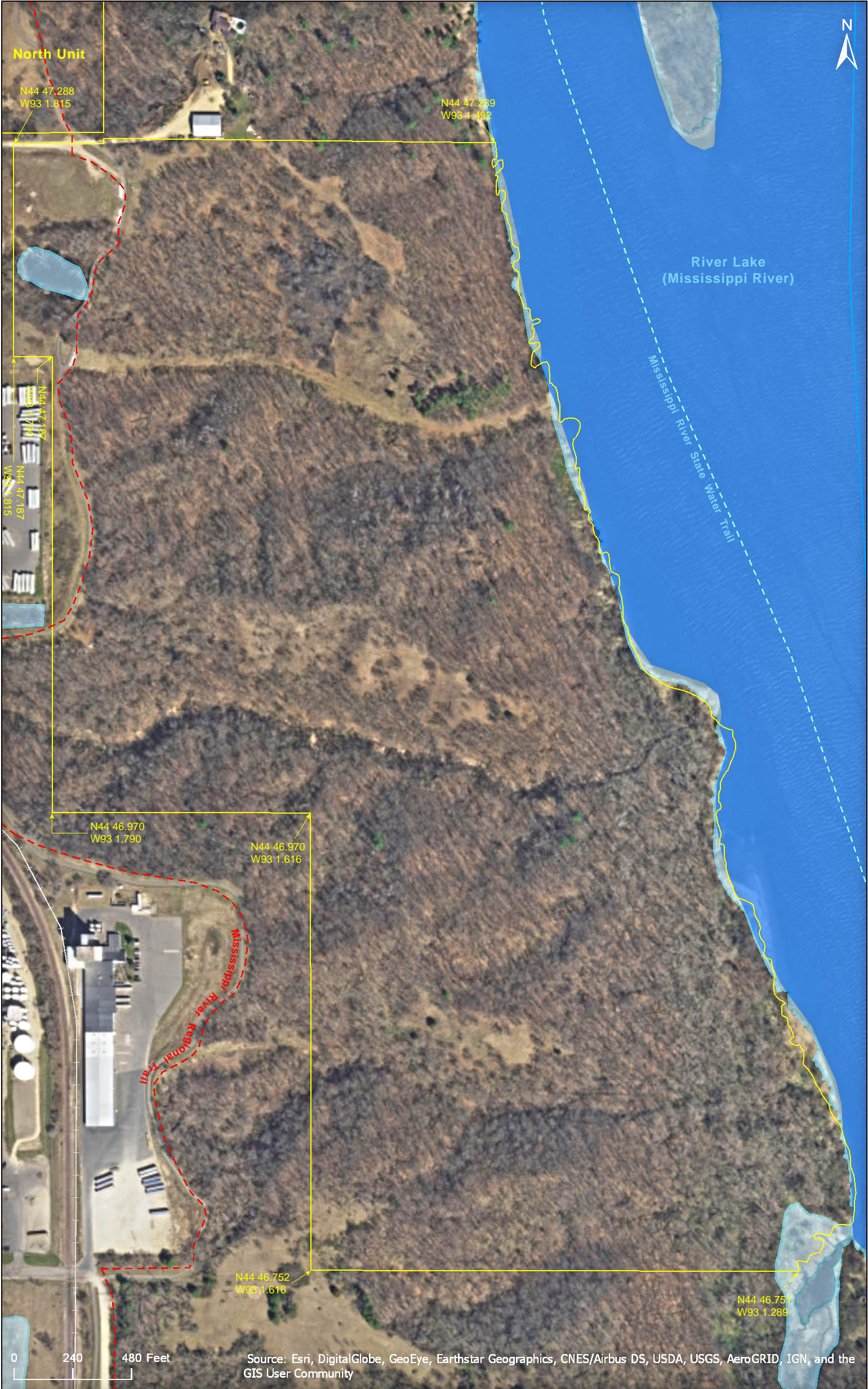
Dakota County



Pine Bend Bluffs SNA
South Unit

National Wetlands Inventory

Dakota County



Pine Bend Bluffs SNA South Unit

Directions and Notes from Minnesota DNR

Directions: In Inver Grove Heights from I-494 7 miles S on US Hwy 52, then E over 52 on 117th St, then 0.8 mile N on Courthouse Blvd (frontage road), then 0.15 mi E on 111th St. Park in pull-off on N.

Lat/Lon: 44.788223, -93.031454

The Mississippi River Regional Trail passes through site, see detail map. This site is in an Audubon Important Bird Area. The Mississippi River Water Trail is adjacent to this site.

Notes from MinnesotaSeasons.com

Parking

N44 47.293, W93 1.887

This relatively new SNA was dedicated in May of 2004. In the spring of 2006 the Friends of the Mississippi River sowed little bluestem seed on recently-cleared prairie north of the small pond. North of the SNA is an area of private property owned by Flint Hills Resources. North of that is the Katharine Ordway Natural History Study Area.

Bike Trail

In 2012, construction began on the Pine Bend Bluffs segment of the Mississippi River Regional Trail (MRRT), which passes through the SNA. The MRRT is a paved bike trail that will eventually connect Hastings and South St. Paul. Construction of the Pine Bend Bluffs segment was completed in the summer of 2013.

DISCLAIMER OF WARRANTIES AND LIMITATIONS OF LIABILITY

MinnesotaSeasons.com, The Nature Conservancy, U.S. Department of Agriculture, Forest Service, U.S. Fish and Wildlife Service, the state of Minnesota, the Minnesota Department of Natural Resources, and their employees, make no representations or warranties, express or implied, with respect to the use of or reliance on the data provided herewith, regardless of its format or means of transmission. There are no guarantees or representations to the user as to the accuracy, currency, completeness, suitability or reliability of this data for any purpose. THE USER ACCEPTS THE DATA AND/OR SOFTWARE "AS IS" AND ASSUMES ALL RISKS ASSOCIATED WITH ITS USE.

IN NO EVENT SHALL MINNESOTASEASONS.COM, TNC, USDA-FS, USFWS, OR MNDNR BE LIABLE FOR ANY DIRECT, INDIRECT, INCIDENTAL, SPECIAL, EXEMPLARY, OR CONSEQUENTIAL DAMAGES (INCLUDING, BUT NOT LIMITED TO, PROCUREMENT OF SUBSTITUTE GOODS OR SERVICES; LOSS OF USE, DATA, OR PROFITS; OR BUSINESS INTERRUPTION) HOWEVER CAUSED AND ON ANY THEORY OF LIABILITY, WHETHER IN CONTRACT, STRICT LIABILITY, OR TORT (INCLUDING NEGLIGENCE OR OTHERS) ARISING IN ANY WAY OUT OF THE USE OF THIS DATA, EVEN IF ADVISED OF THE POSSIBILITY OF SUCH DAMAGE OR FOR ANY CLAIM BY ANY OTHER PARTY.

Your use of the data is acceptance on your part of the terms and conditions set forth herein.