

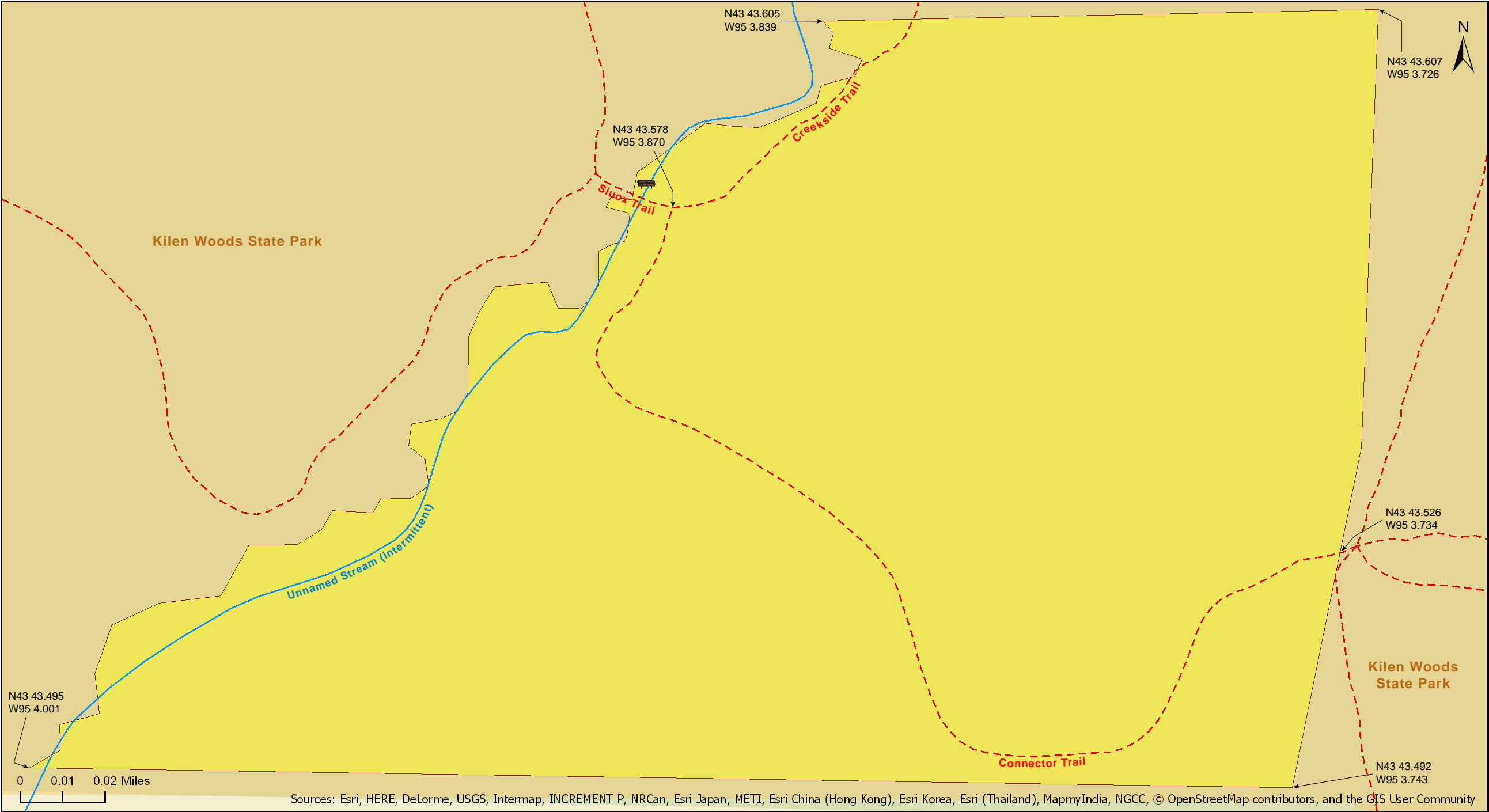
Prairie Bush Clover SNA

Jackson County



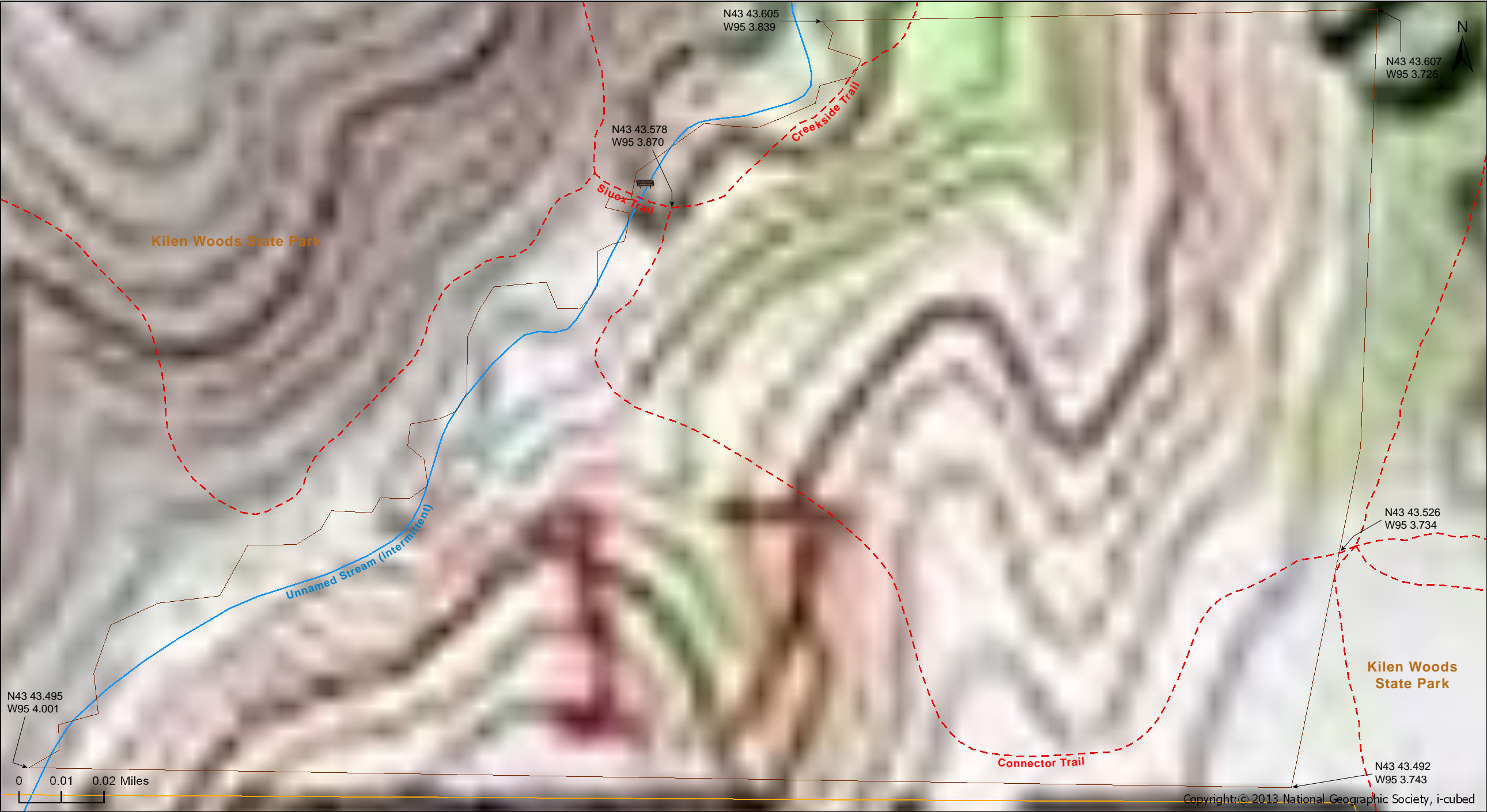
Prairie Bush Clover SNA

Jackson County



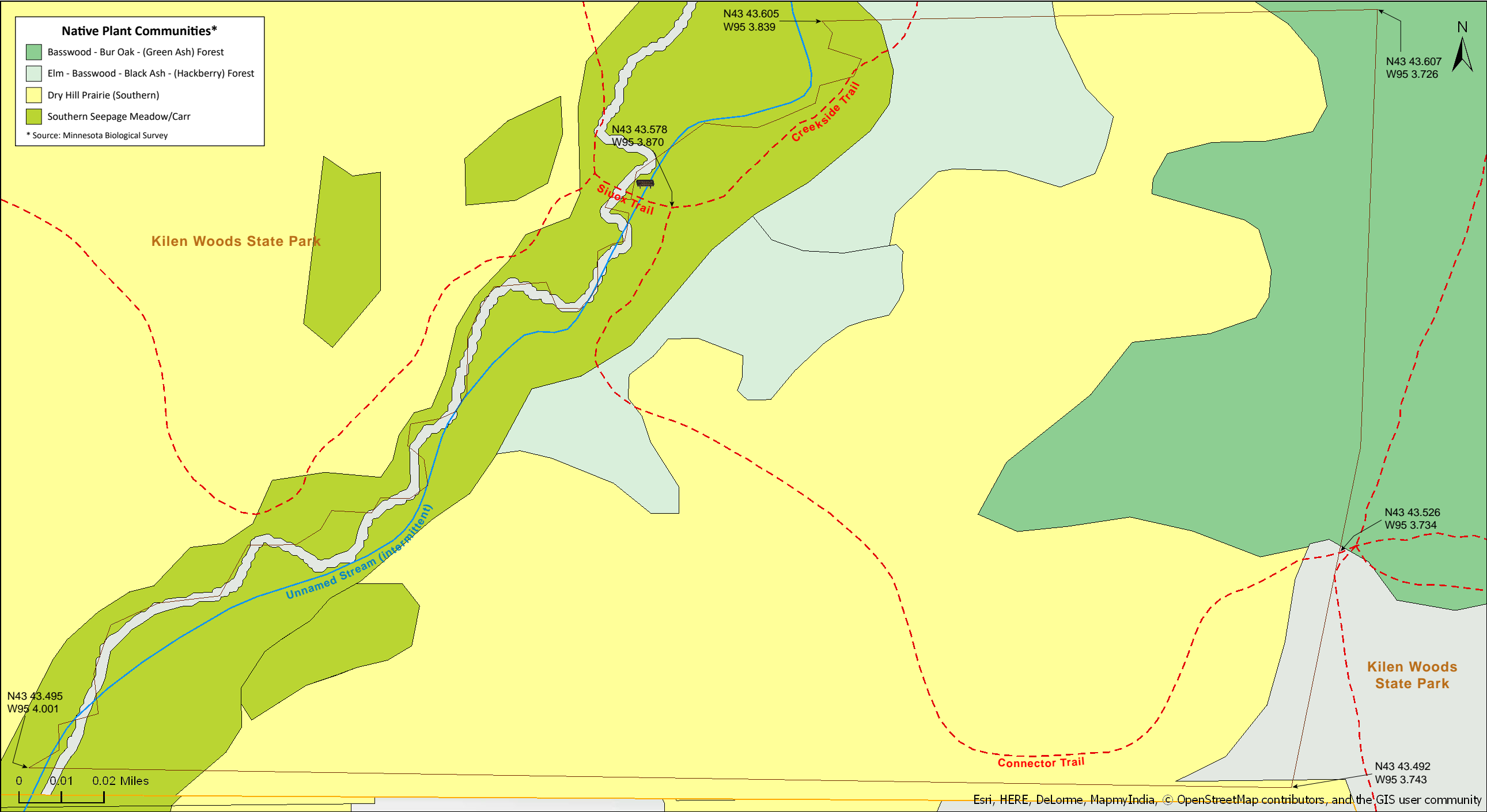
Prairie Bush Clover SNA

Jackson County



Prairie Bush Clover SNA

Jackson County





Prairie Bush Clover SNA

Directions and Notes from Minnesota DNR

Directions: From Windom 8.5 miles S on Co Hwy 17, then 1.5 miles E on Co Hwy 24 into Kilen Woods State Park. Park in lot near office and hike trails S to site.

Lat/Lon: 43.730577, -95.066959

A hiking trail passes through site. This site is in an Audubon Important Bird Area and Watchable Wildlife Viewing Area. Recreational facilities available in Kilen Woods State Park.

Notes from MinnesotaSeasons.com

Parking

Kilen Woods State Park
N43 43.826, W95 4.012

Hiking Trails

This SNA is lies within Kilen Woods State Park. The state park Connector, Sioux, and Creekside Trails pass through this SNA.

DISCLAIMER OF WARRANTIES AND LIMITATIONS OF LIABILITY

MinnesotaSeasons.com, The Nature Conservancy, U.S. Department of Agriculture, Forest Service, U.S. Fish and Wildlife Service, the state of Minnesota, the Minnesota Department of Natural Resources, and their employees, make no representations or warranties, express or implied, with respect to the use of or reliance on the data provided herewith, regardless of its format or means of transmission. There are no guarantees or representations to the user as to the accuracy, currency, completeness, suitability or reliability of this data for any purpose. THE USER ACCEPTS THE DATA AND/OR SOFTWARE "AS IS" AND ASSUMES ALL RISKS ASSOCIATED WITH ITS USE.

IN NO EVENT SHALL MINNESOTASEASONS.COM, TNC, USDA-FS, USFWS, OR MNDNR BE LIABLE FOR ANY DIRECT, INDIRECT, INCIDENTAL, SPECIAL, EXEMPLARY, OR CONSEQUENTIAL DAMAGES (INCLUDING, BUT NOT LIMITED TO, PROCUREMENT OF SUBSTITUTE GOODS OR SERVICES; LOSS OF USE, DATA, OR PROFITS; OR BUSINESS INTERRUPTION) HOWEVER CAUSED AND ON ANY THEORY OF LIABILITY, WHETHER IN CONTRACT, STRICT LIABILITY, OR TORT (INCLUDING NEGLIGENCE OR OTHERS) ARISING IN ANY WAY OUT OF THE USE OF THIS DATA, EVEN IF ADVISED OF THE POSSIBILITY OF SUCH DAMAGE OR FOR ANY CLAIM BY ANY OTHER PARTY.

Your use of the data is acceptance on your part of the terms and conditions set forth herein.