

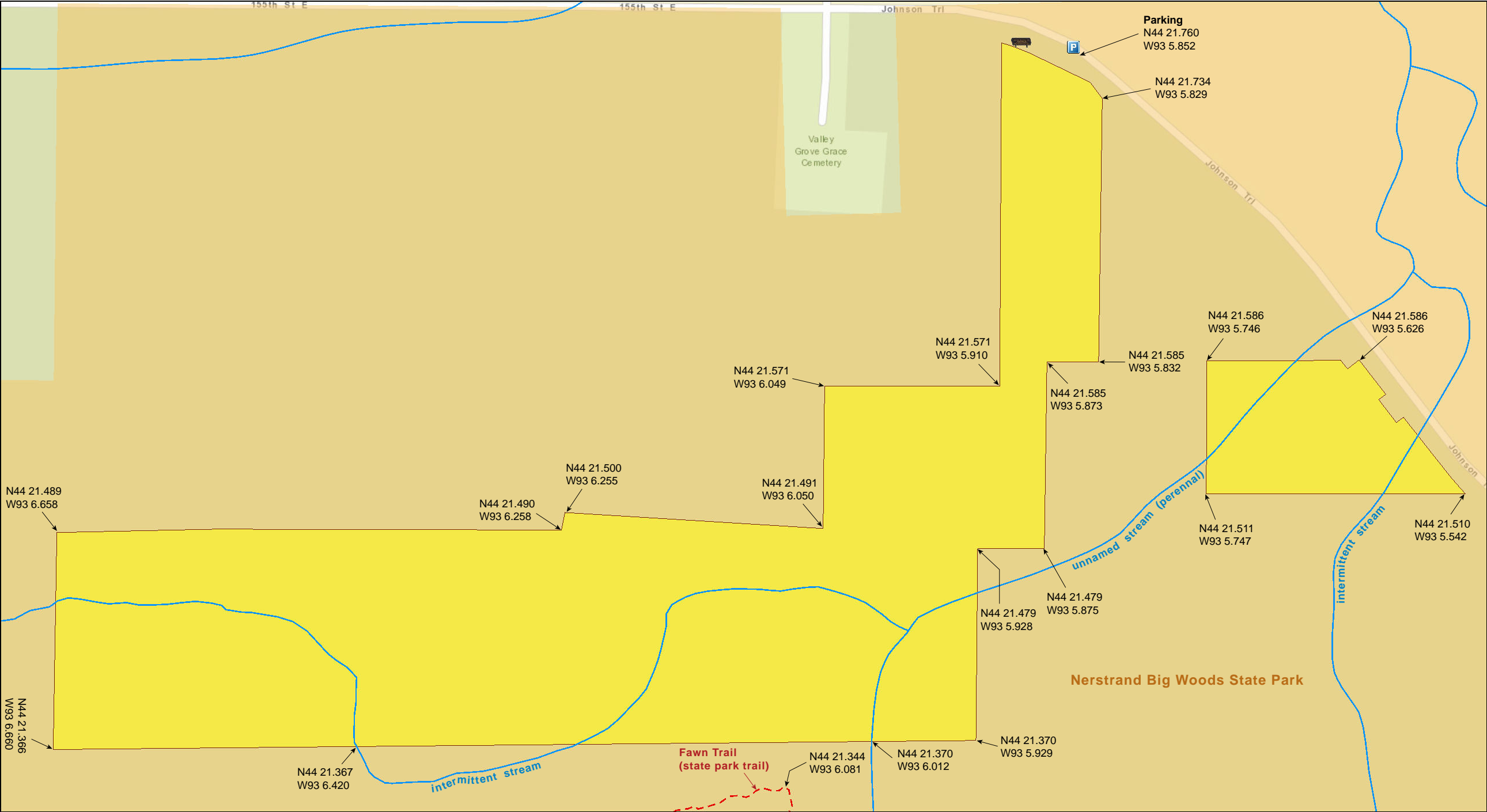
Prairie Creek Woods SNA

Rice County



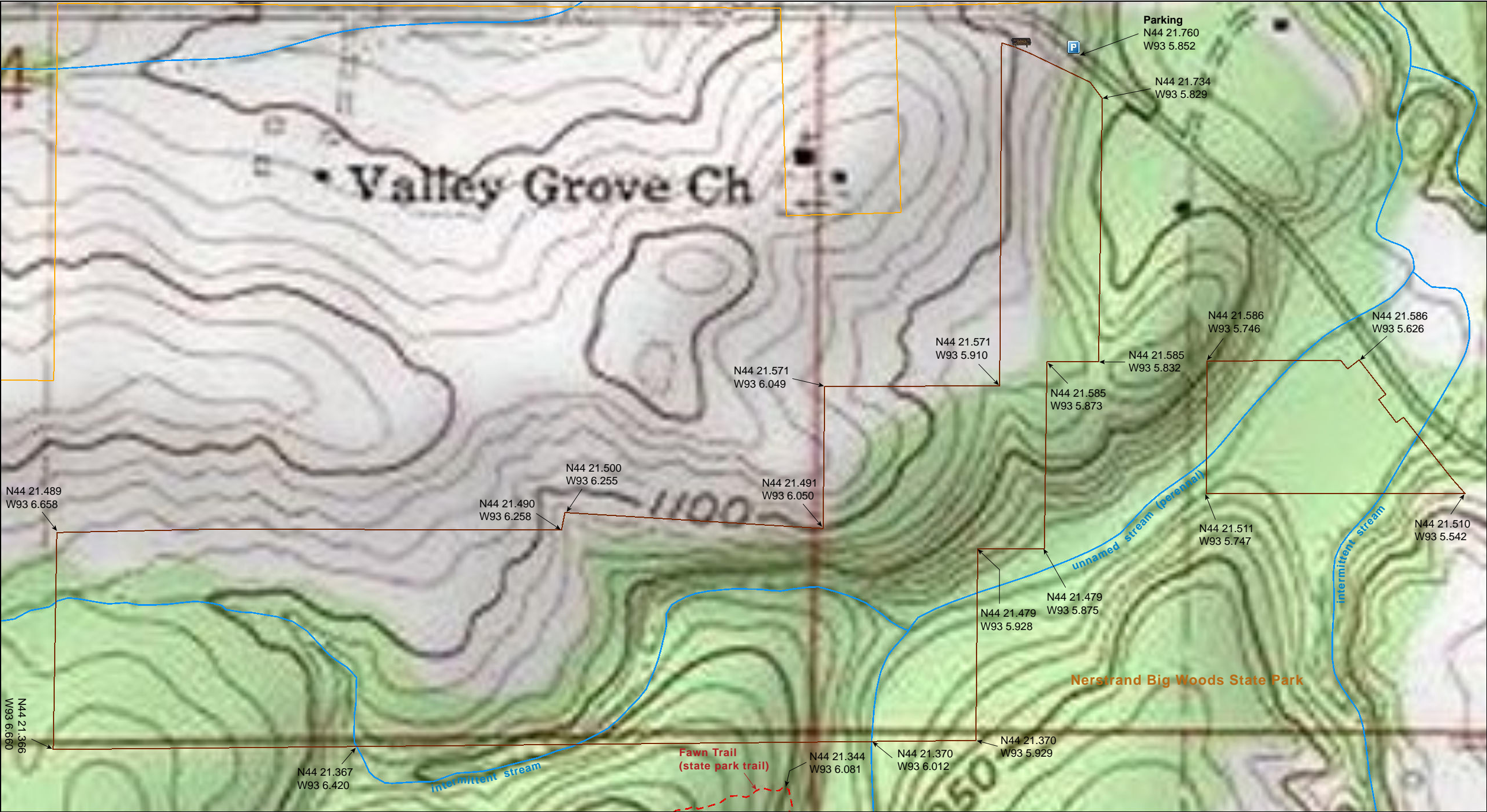
Prairie Creek Woods SNA

Rice County



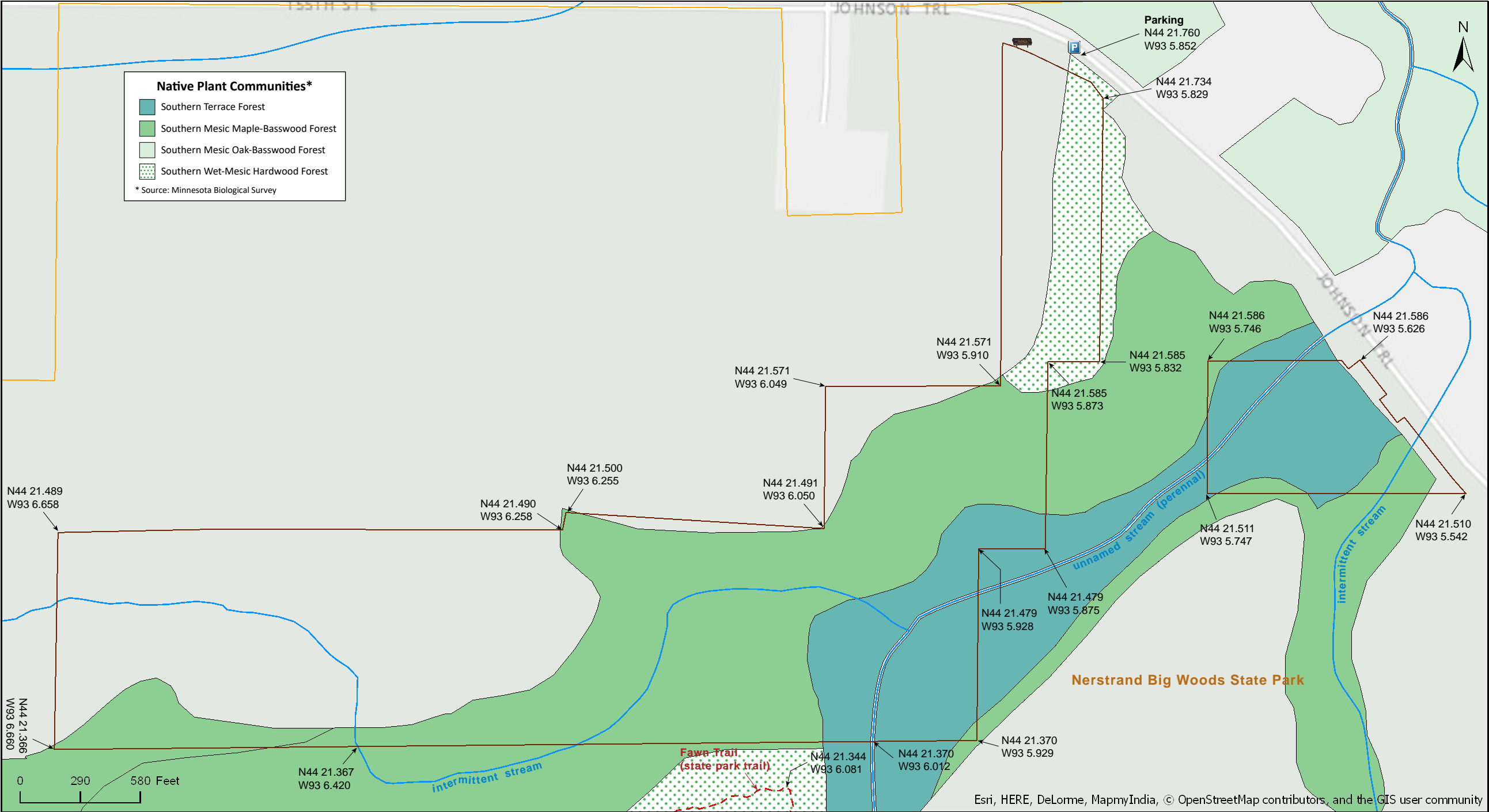
Prairie Creek Woods SNA

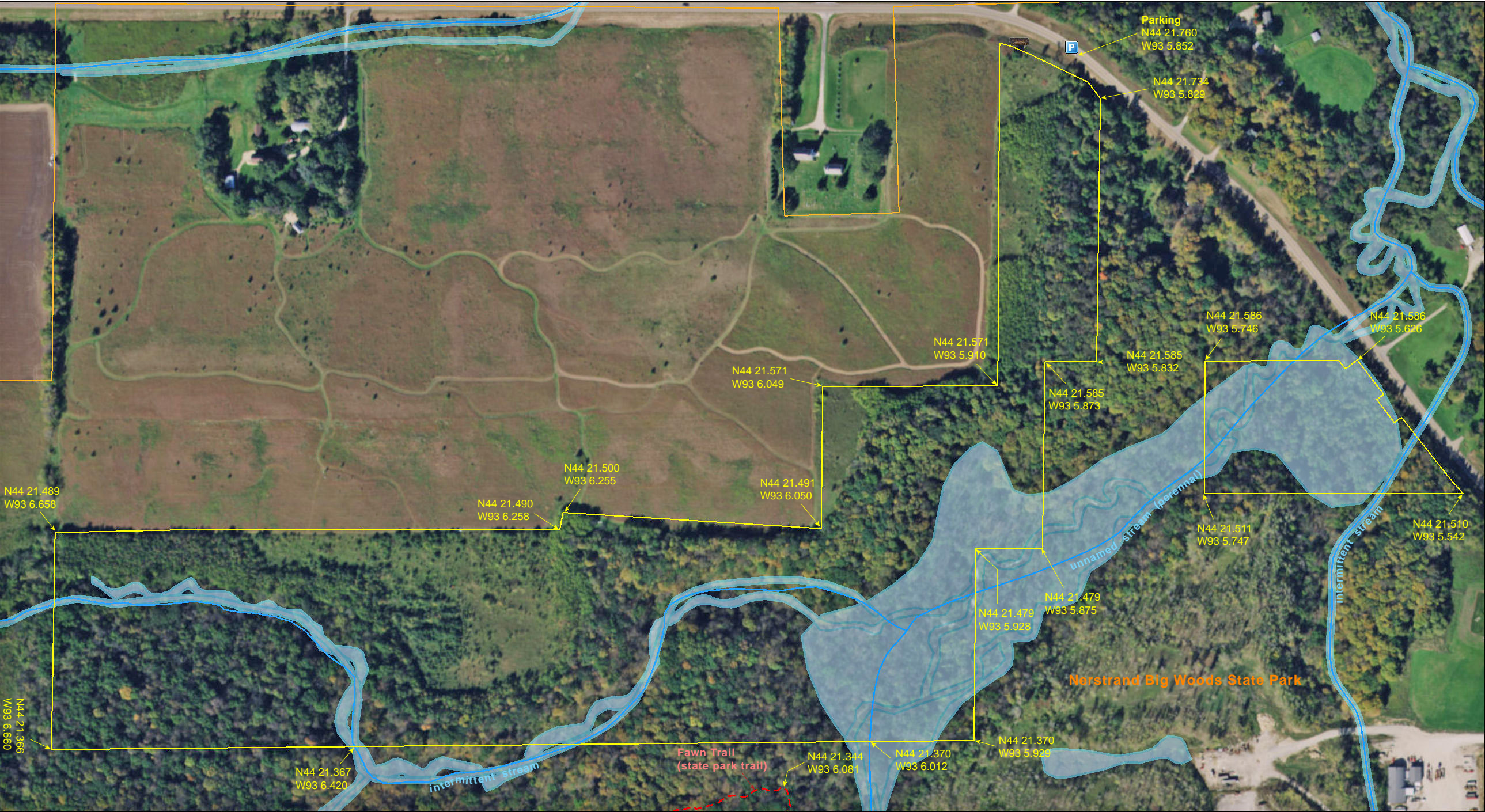
Rice County



Prairie Creek Woods SNA

Rice County





Prairie Creek Woods SNA

Directions and Notes from Minnesota DNR

Directions: From Nerstrand 0.5 mile W and 1 mile N on MN Hwy 246, then 1 mile W on Co Hwy 30. Park on S road shoulder.

Lat/Lon: 44.362664, -93.097537

This site has no maintained trails. This site is in a Watchable Wildlife Viewing Area. Recreational facilities available in Nerstrand Big Woods State Park.

Notes from MinnesotaSeasons.com

Parking

Road Shoulder

N44 21.760, W93 5.852

Nerstrand Big Woods State Park

N44 20.606, W93 6.382

Parking on the shoulder at the curve in the road, which the Minnesota DNR suggests, is not safe for you or for other drivers who will not see your car until they are almost upon it. Park instead in Nerstrand Big Woods State Park and hike to the SNA.

DISCLAIMER OF WARRANTIES AND LIMITATIONS OF LIABILITY

MinnesotaSeasons.com, The Nature Conservancy, U.S. Department of Agriculture, Forest Service, U.S. Fish and Wildlife Service, the state of Minnesota, the Minnesota Department of Natural Resources, and their employees, make no representations or warranties, express or implied, with respect to the use of or reliance on the data provided herewith, regardless of its format or means of transmission. There are no guarantees or representations to the user as to the accuracy, currency, completeness, suitability or reliability of this data for any purpose. THE USER ACCEPTS THE DATA AND/OR SOFTWARE "AS IS" AND ASSUMES ALL RISKS ASSOCIATED WITH ITS USE.

IN NO EVENT SHALL MINNESOTASEASONS.COM, TNC, USDA-FS, USFWS, OR MNDNR BE LIABLE FOR ANY DIRECT, INDIRECT, INCIDENTAL, SPECIAL, EXEMPLARY, OR CONSEQUENTIAL DAMAGES (INCLUDING, BUT NOT LIMITED TO, PROCUREMENT OF SUBSTITUTE GOODS OR SERVICES; LOSS OF USE, DATA, OR PROFITS; OR BUSINESS INTERRUPTION) HOWEVER CAUSED AND ON ANY THEORY OF LIABILITY, WHETHER IN CONTRACT, STRICT LIABILITY, OR TORT (INCLUDING NEGLIGENCE OR OTHERS) ARISING IN ANY WAY OUT OF THE USE OF THIS DATA, EVEN IF ADVISED OF THE POSSIBILITY OF SUCH DAMAGE OR FOR ANY CLAIM BY ANY OTHER PARTY.

Your use of the data is acceptance on your part of the terms and conditions set forth herein.