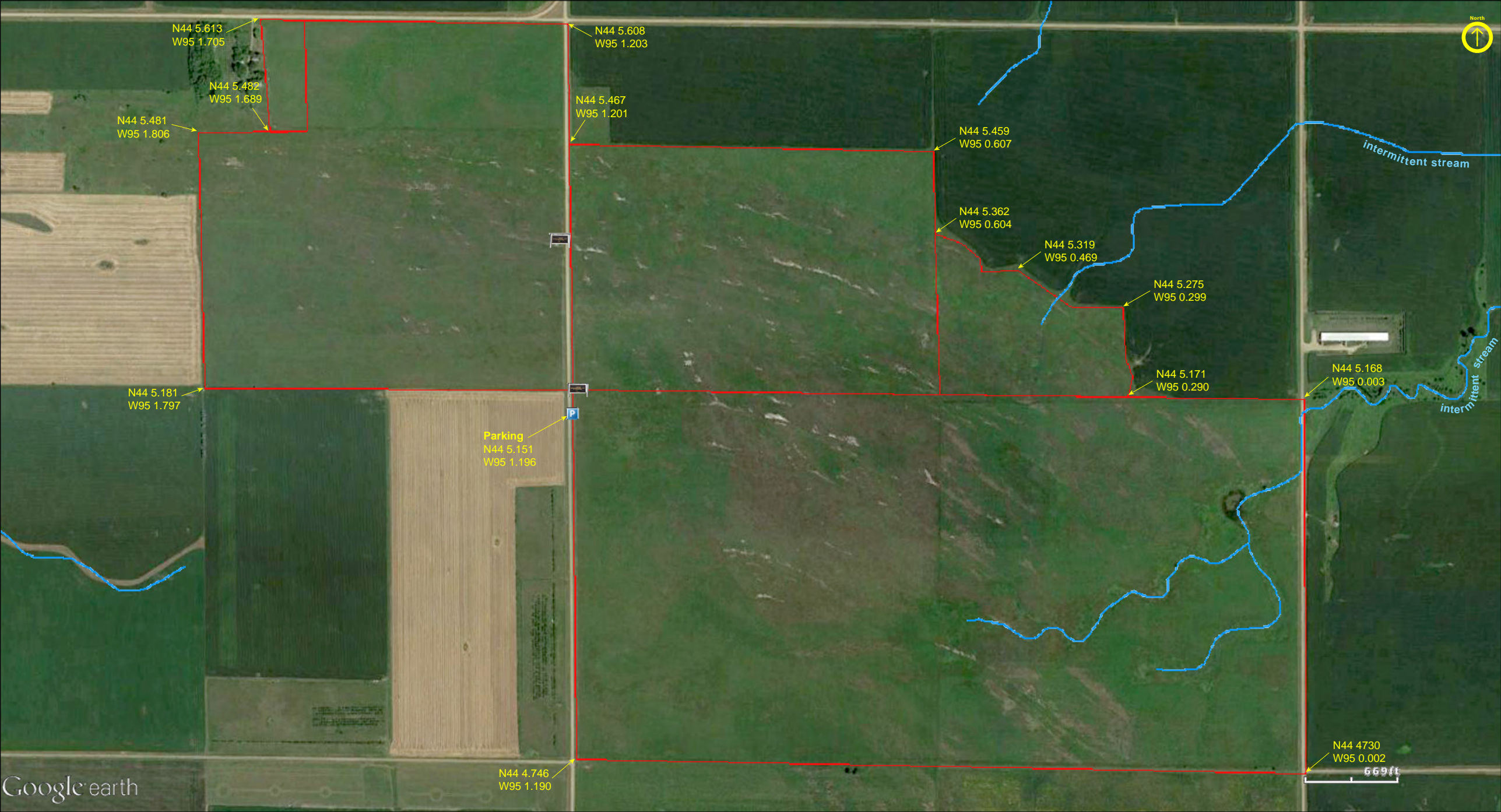


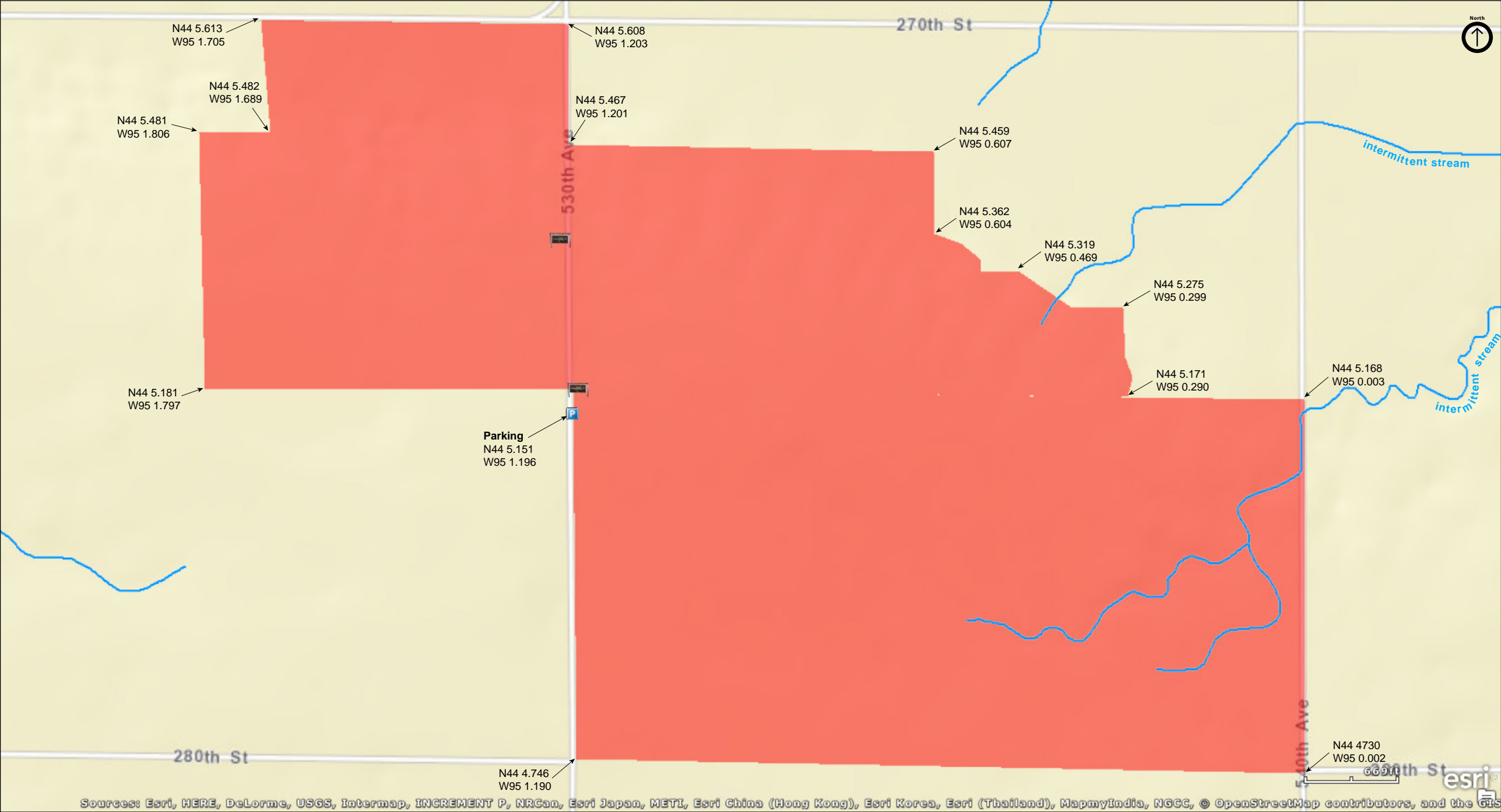
Red Rock Prairie

Cottonwood County



Red Rock Prairie

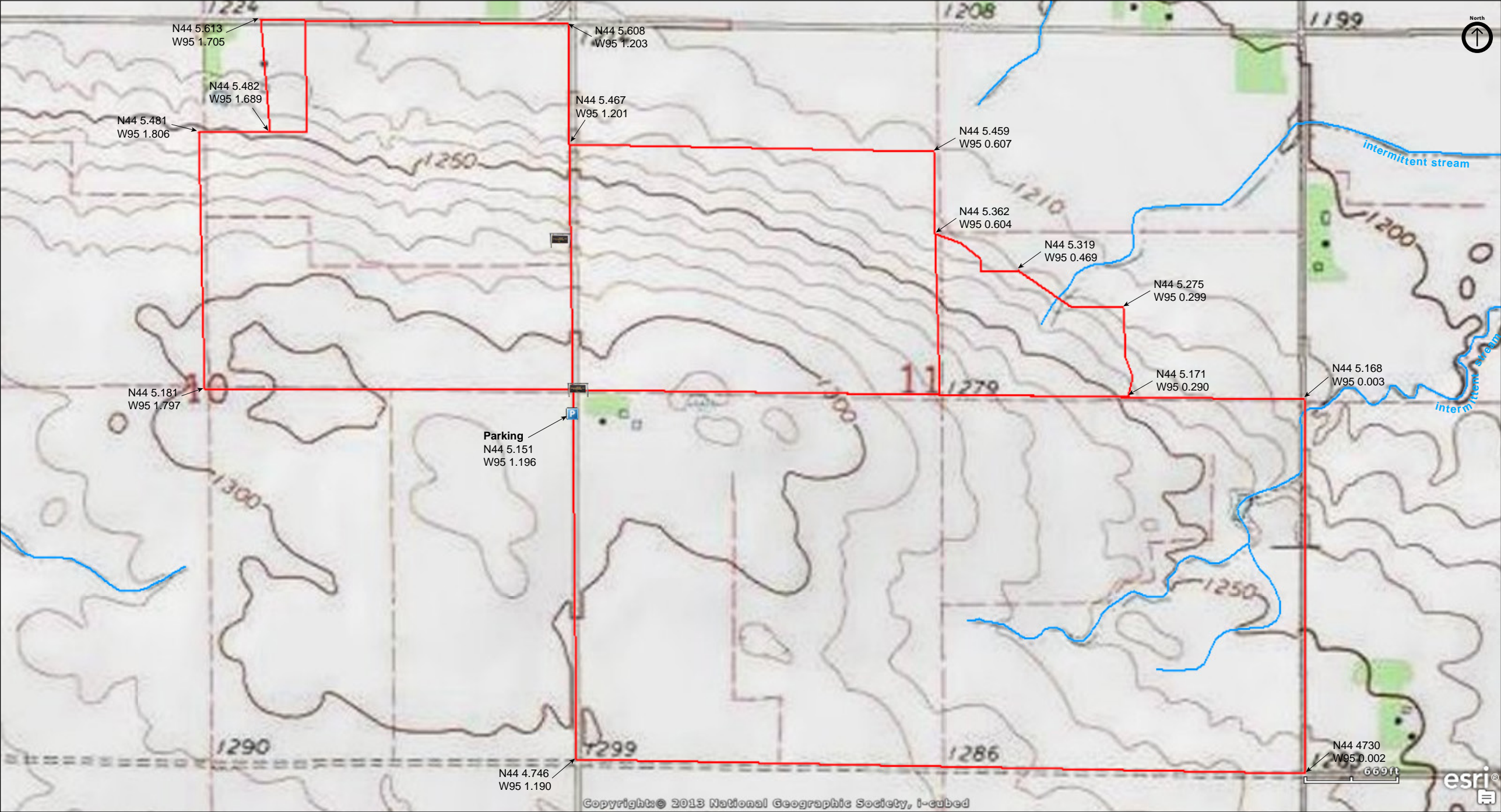
Cottonwood County



Sources: Esri, HERE, DeLorme, USGS, Intermap, INCREMENT P, NRCan, Esri Japan, METI, Esri China (Hong Kong), Esri Korea, Esri (Thailand), MapmyIndia, NGCC, © OpenStreetMap contributors, and the GIS

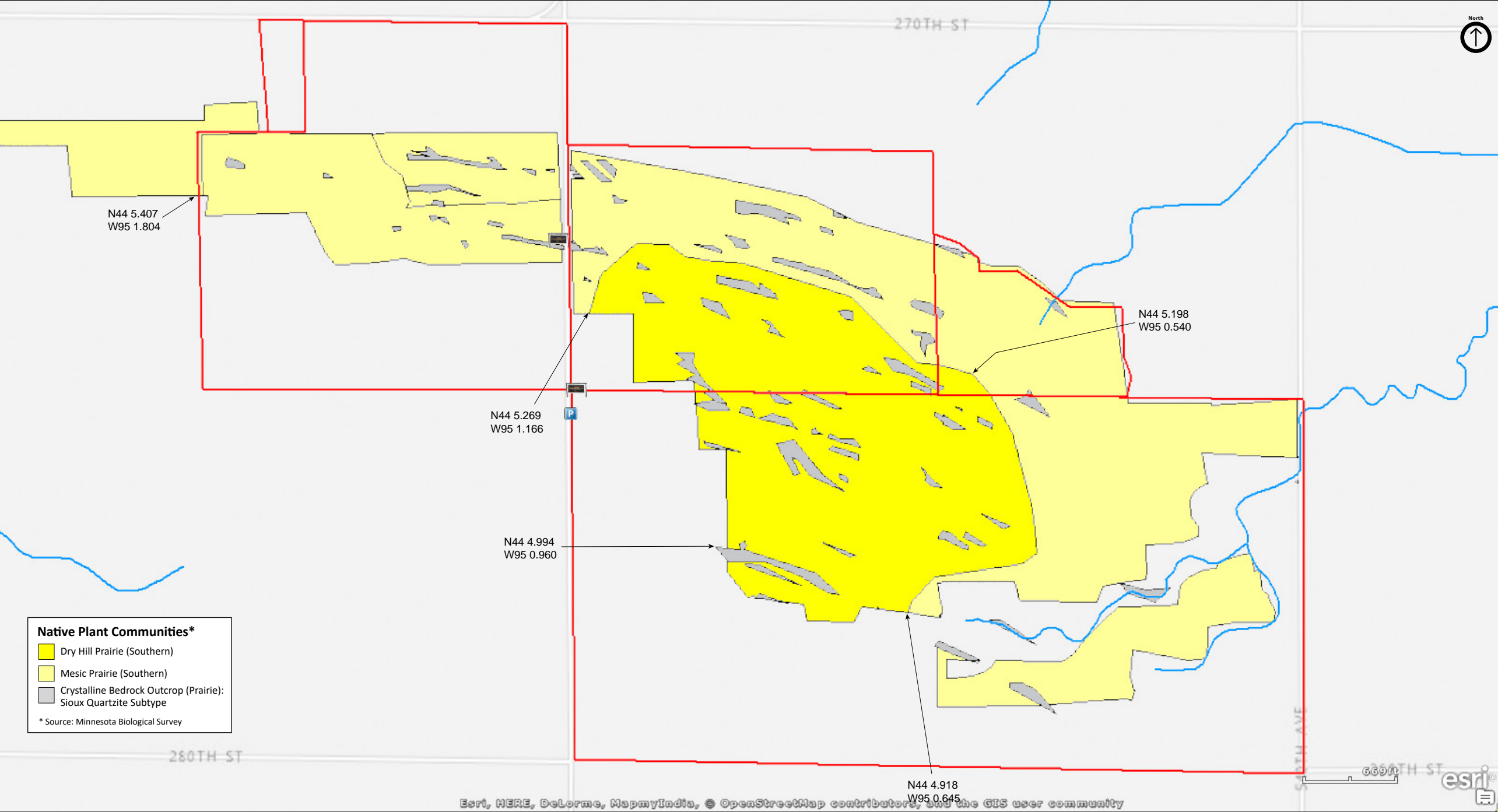
Red Rock Prairie

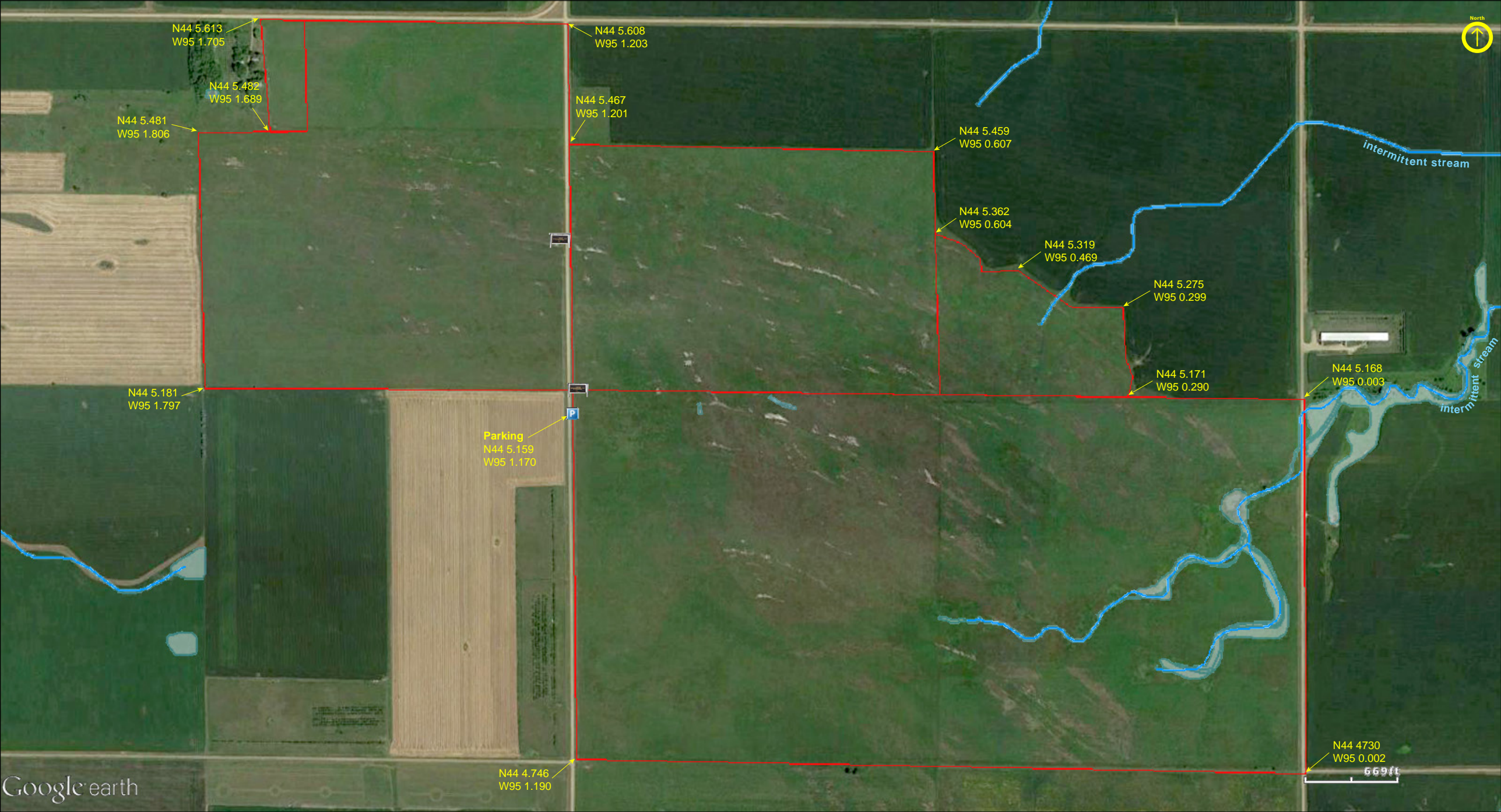
Cottonwood County



Red Rock Prairie

Cottonwood County





Red Rock Prairie

Directions and Notes from The Nature Conservancy

Take U.S. Highway 71 north from Windom 15 miles to Highway 10. Travel east on Highway 10 five miles to Highway 45, which is a gravel road. Go south one and one-half miles. The preserve is on the east and west sides of the road. Parking is available on the east side of the road near the main sign.

Each year, the Conservancy conducts ecologically sensitive controlled burns at Red Rock Prairie to enhance the quality of the vegetation.... Weedy plants like smooth brome and Kentucky bluegrass compete with the prairie's native plants. By using controlled burns, the Conservancy can keep these invasive plants in check.

Notes from MinnesotaSeasons.com

Parking

N44 5.151, W95 1.196

DISCLAIMER OF WARRANTIES AND LIMITATIONS OF LIABILITY

MinnesotaSeasons.com, The Nature Conservancy, U.S. Department of Agriculture, Forest Service, U.S. Fish and Wildlife Service, the state of Minnesota, the Minnesota Department of Natural Resources, and their employees, make no representations or warranties, express or implied, with respect to the use of or reliance on the data provided herewith, regardless of its format or means of transmission. There are no guarantees or representations to the user as to the accuracy, currency, completeness, suitability or reliability of this data for any purpose. THE USER ACCEPTS THE DATA AND/OR SOFTWARE "AS IS" AND ASSUMES ALL RISKS ASSOCIATED WITH ITS USE.

IN NO EVENT SHALL MINNESOTASEASONS.COM, TNC, USDA-FS, USFWS, OR MNDNR BE LIABLE FOR ANY DIRECT, INDIRECT, INCIDENTAL, SPECIAL, EXEMPLARY, OR CONSEQUENTIAL DAMAGES (INCLUDING, BUT NOT LIMITED TO, PROCUREMENT OF SUBSTITUTE GOODS OR SERVICES; LOSS OF USE, DATA, OR PROFITS; OR BUSINESS INTERRUPTION) HOWEVER CAUSED AND ON ANY THEORY OF LIABILITY, WHETHER IN CONTRACT, STRICT LIABILITY, OR TORT (INCLUDING NEGLIGENCE OR OTHERS) ARISING IN ANY WAY OUT OF THE USE OF THIS DATA, EVEN IF ADVISED OF THE POSSIBILITY OF SUCH DAMAGE OR FOR ANY CLAIM BY ANY OTHER PARTY.

Your use of the data is acceptance on your part of the terms and conditions set forth herein.