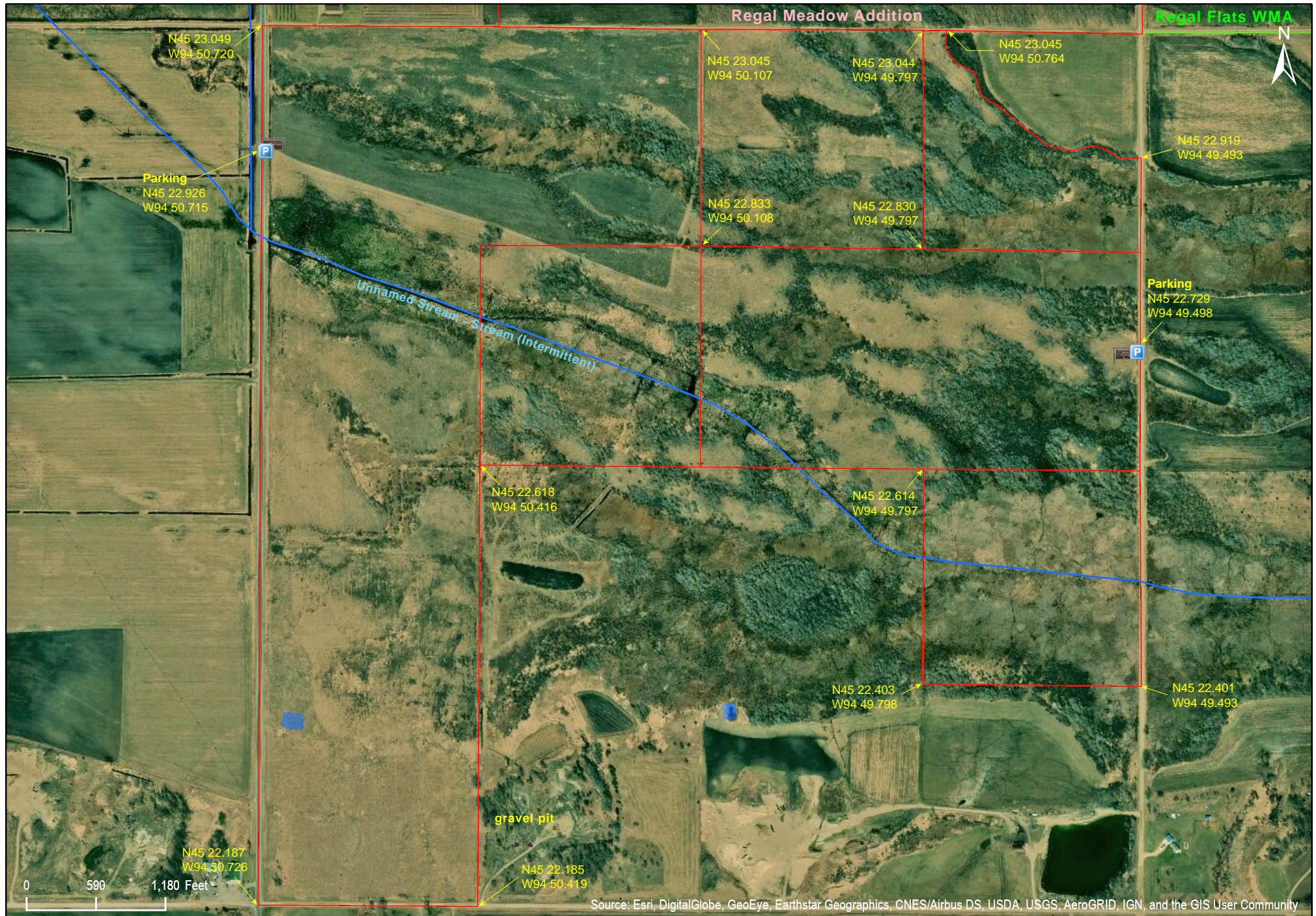


Regal Meadow West Unit

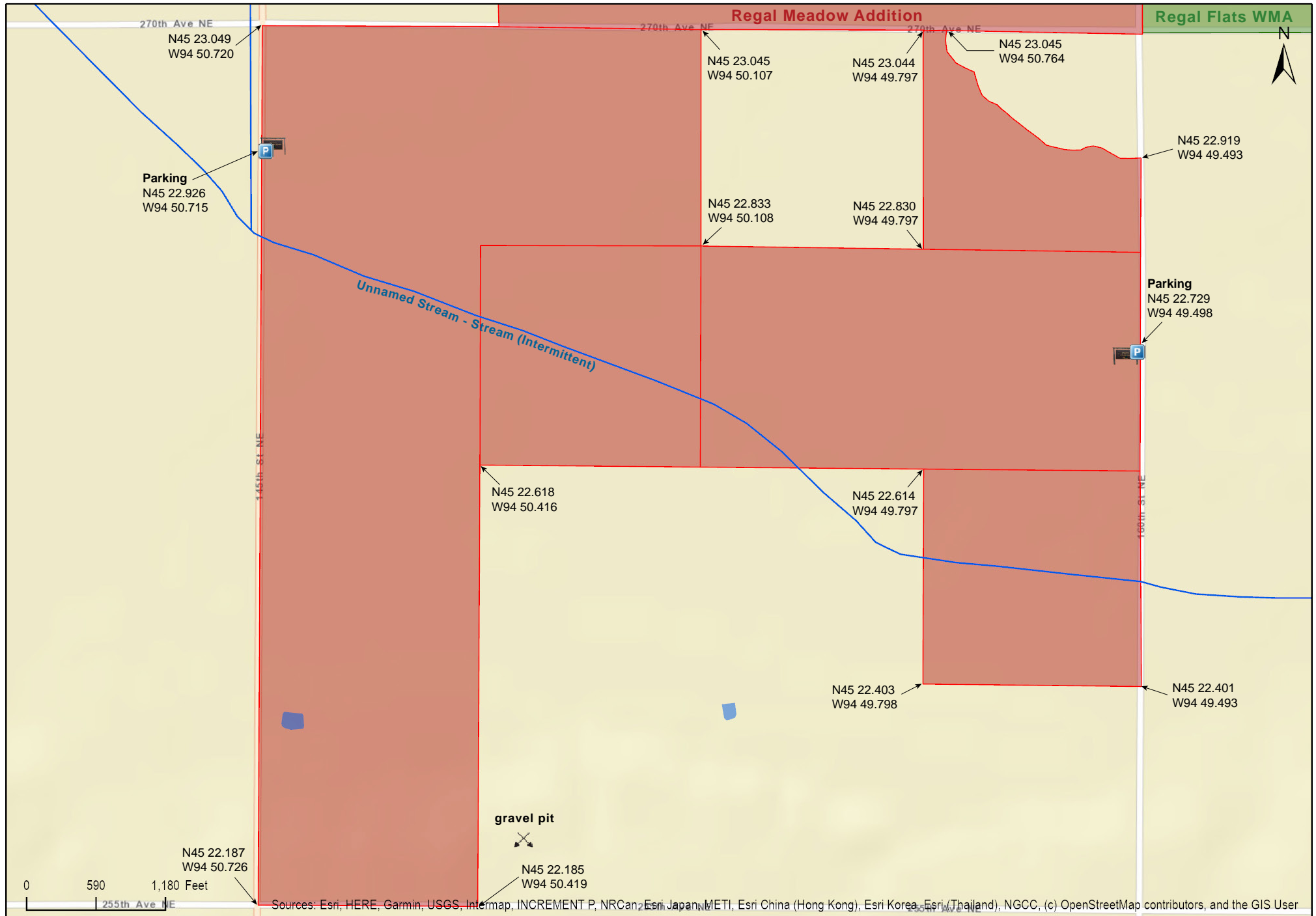
Kandiyohi County



Source: Esri, DigitalGlobe, GeoEye, Earthstar Geographics, CNES/Airbus DS, USDA, USGS, AeroGRID, IGN, and the GIS User Community

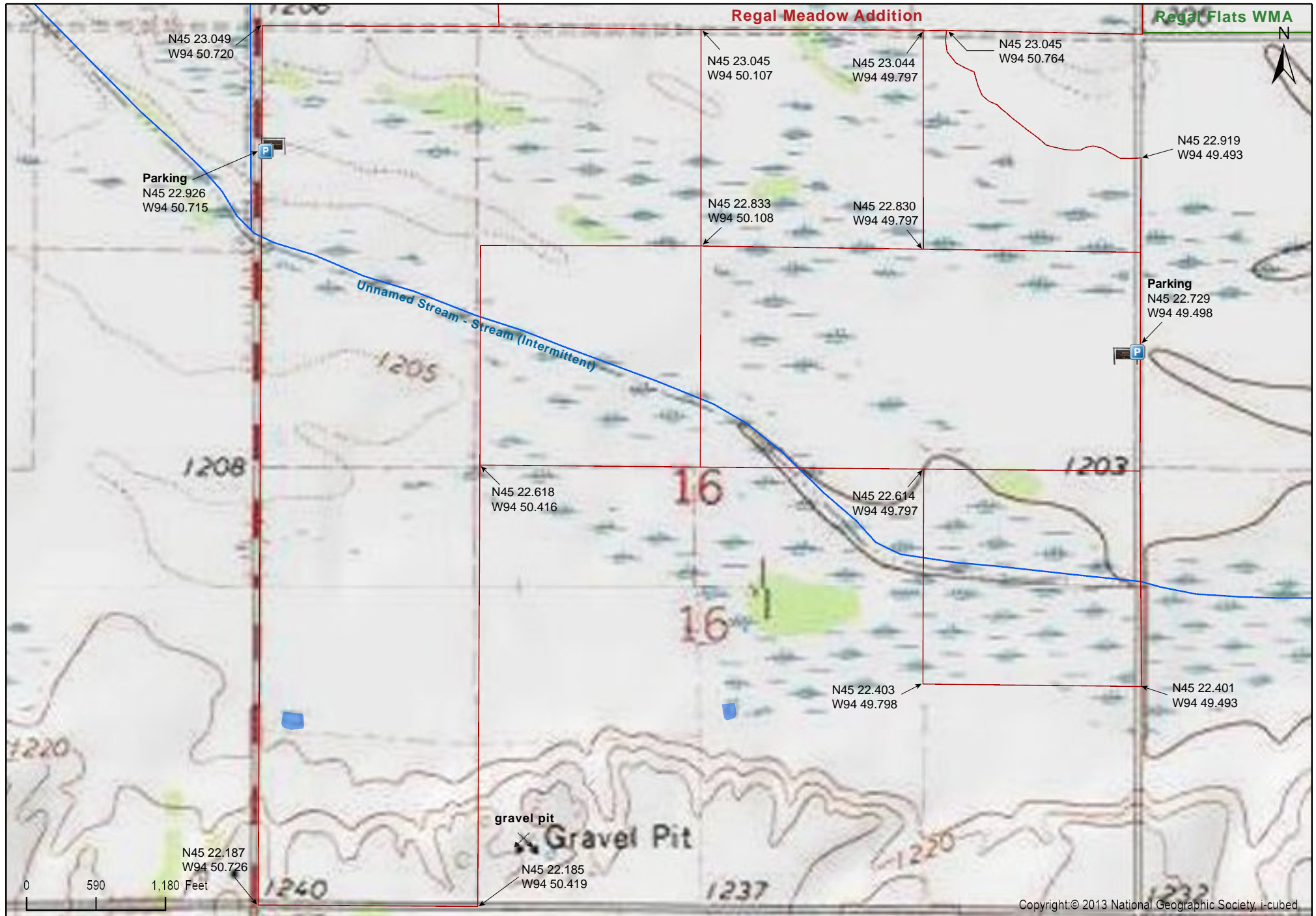
Regal Meadow West Unit

Kandiyohi County



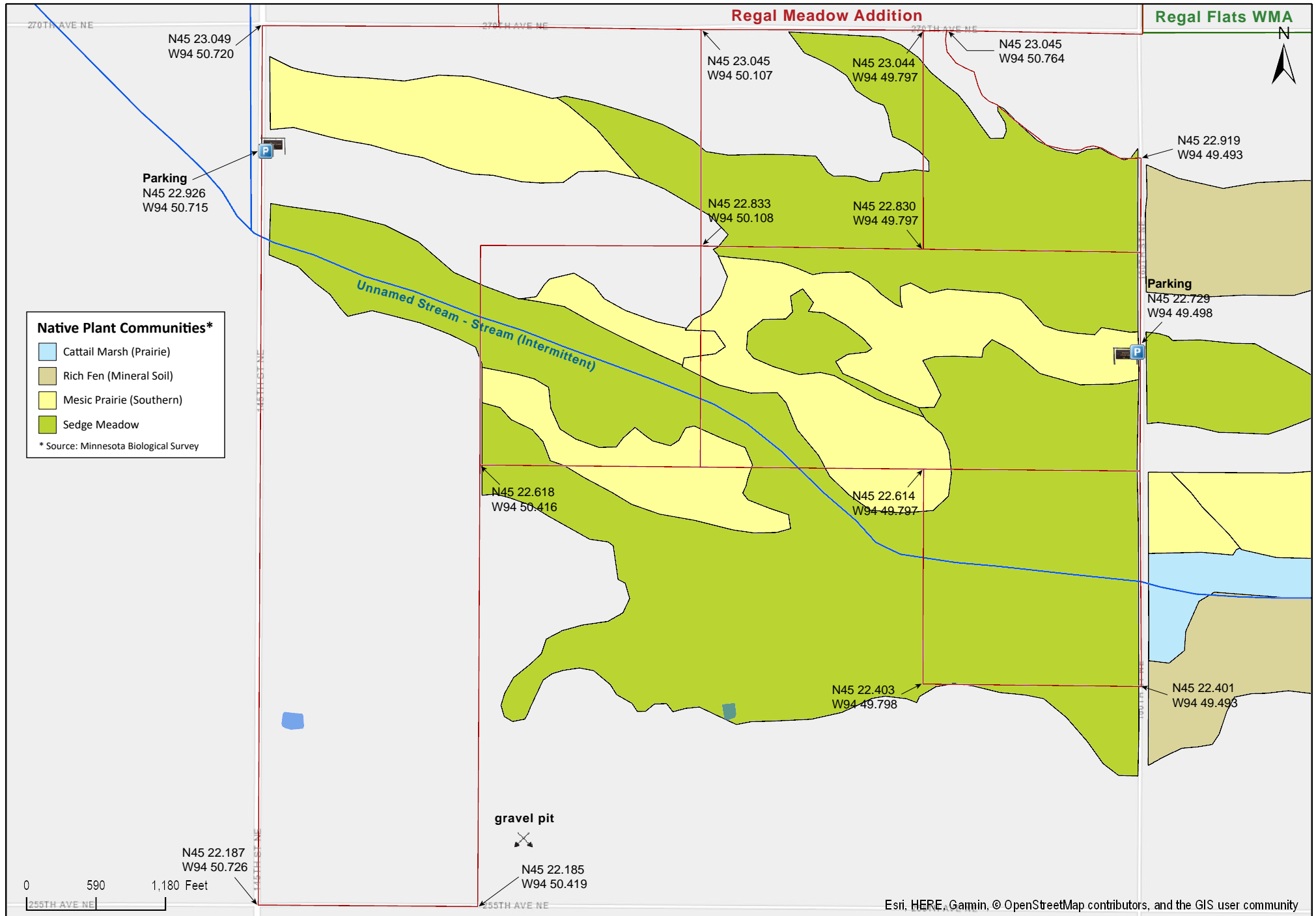
Regal Meadow West Unit

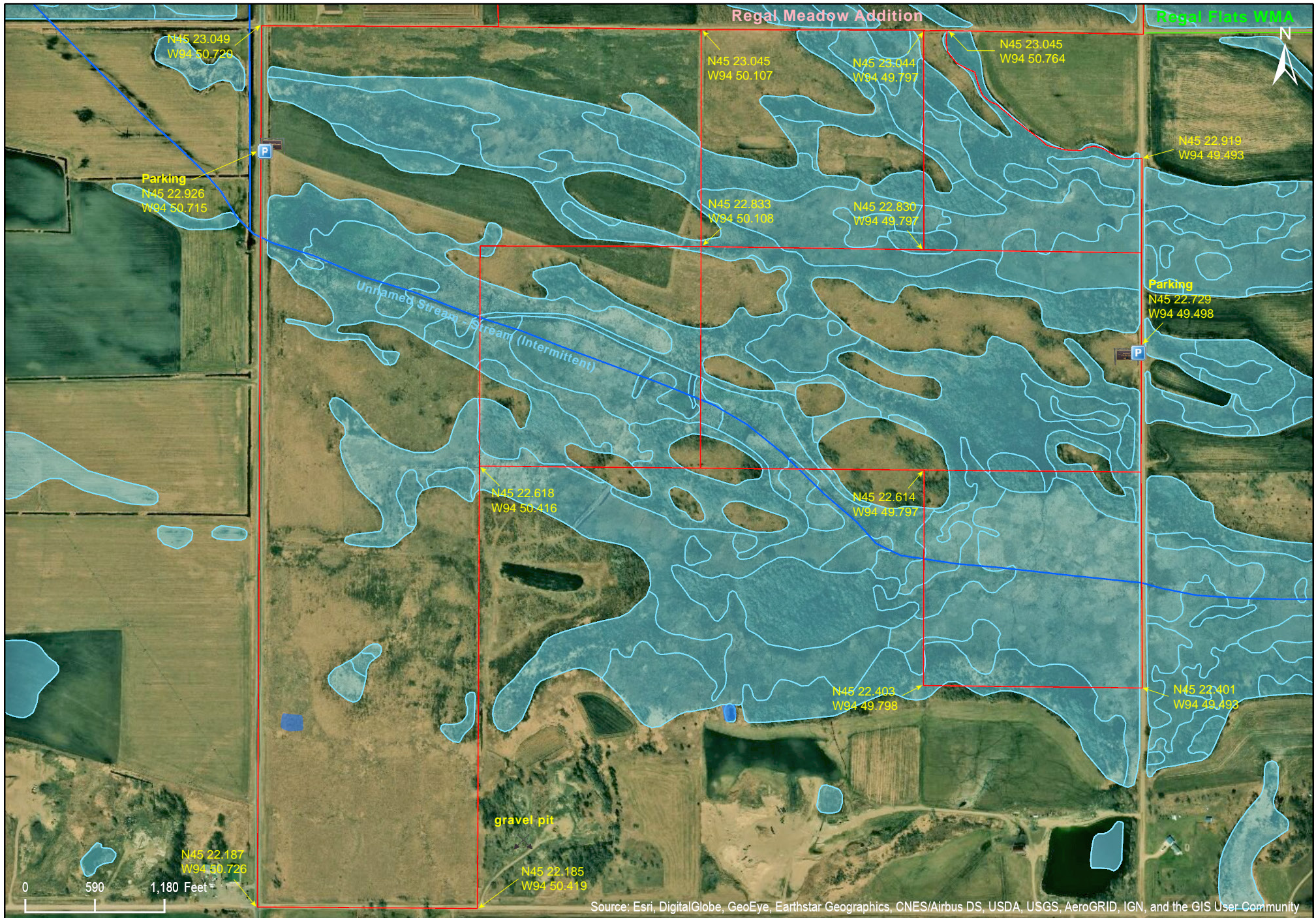
Kandiyohi County



Regal Meadow West Unit

Kandiyohi County



Regal Meadow
West Unit

Regal Meadow West Unit

Directions and Notes from The Nature Conservancy

Directions

From Paynesville, take Minnesota Highway 23 southwest for approximately six miles to Hawick. Turn north and drive on a gravel road for two miles. The preserve is on the west side of the road.

Notes from MinnesotaSeasons.com

Parking

County Road 2 (145th St. NE)

There is a field access on the east side of County Road 2 (145th St. NE) near the northwest corner of the unit. Park on the field access.

N45 22.926, W94 50.715

160th St. NE

There is a field access on the west side of 160th St. NE at the east boundary of the unit. Park on the field access.

N45 22.729, W94 49.498

DISCLAIMER OF WARRANTIES AND LIMITATIONS OF LIABILITY

MinnesotaSeasons.com, The Nature Conservancy, U.S. Department of Agriculture, Forest Service, U.S. Fish and Wildlife Service, the state of Minnesota, the Minnesota Department of Natural Resources, and their employees, make no representations or warranties, express or implied, with respect to the use of or reliance on the data provided herewith, regardless of its format or means of transmission. There are no guarantees or representations to the user as to the accuracy, currency, completeness, suitability or reliability of this data for any purpose. THE USER ACCEPTS THE DATA AND/OR SOFTWARE "AS IS" AND ASSUMES ALL RISKS ASSOCIATED WITH ITS USE.

IN NO EVENT SHALL MINNESOTASEASONS.COM, TNC, USDA-FS, USFWS, OR MNDNR BE LIABLE FOR ANY DIRECT, INDIRECT, INCIDENTAL, SPECIAL, EXEMPLARY, OR CONSEQUENTIAL DAMAGES (INCLUDING, BUT NOT LIMITED TO, PROCUREMENT OF SUBSTITUTE GOODS OR SERVICES; LOSS OF USE, DATA, OR PROFITS; OR BUSINESS INTERRUPTION) HOWEVER CAUSED AND ON ANY THEORY OF LIABILITY, WHETHER IN CONTRACT, STRICT LIABILITY, OR TORT (INCLUDING NEGLIGENCE OR OTHERWISE) ARISING IN ANY WAY OUT OF THE USE OF THIS DATA, EVEN IF ADVISED OF THE POSSIBILITY OF SUCH DAMAGE OR FOR ANY CLAIM BY ANY OTHER PARTY.

Your use of the data is acceptance on your part of the terms and conditions set forth herein.