

Roscoe Prairie SNA

Stearns County





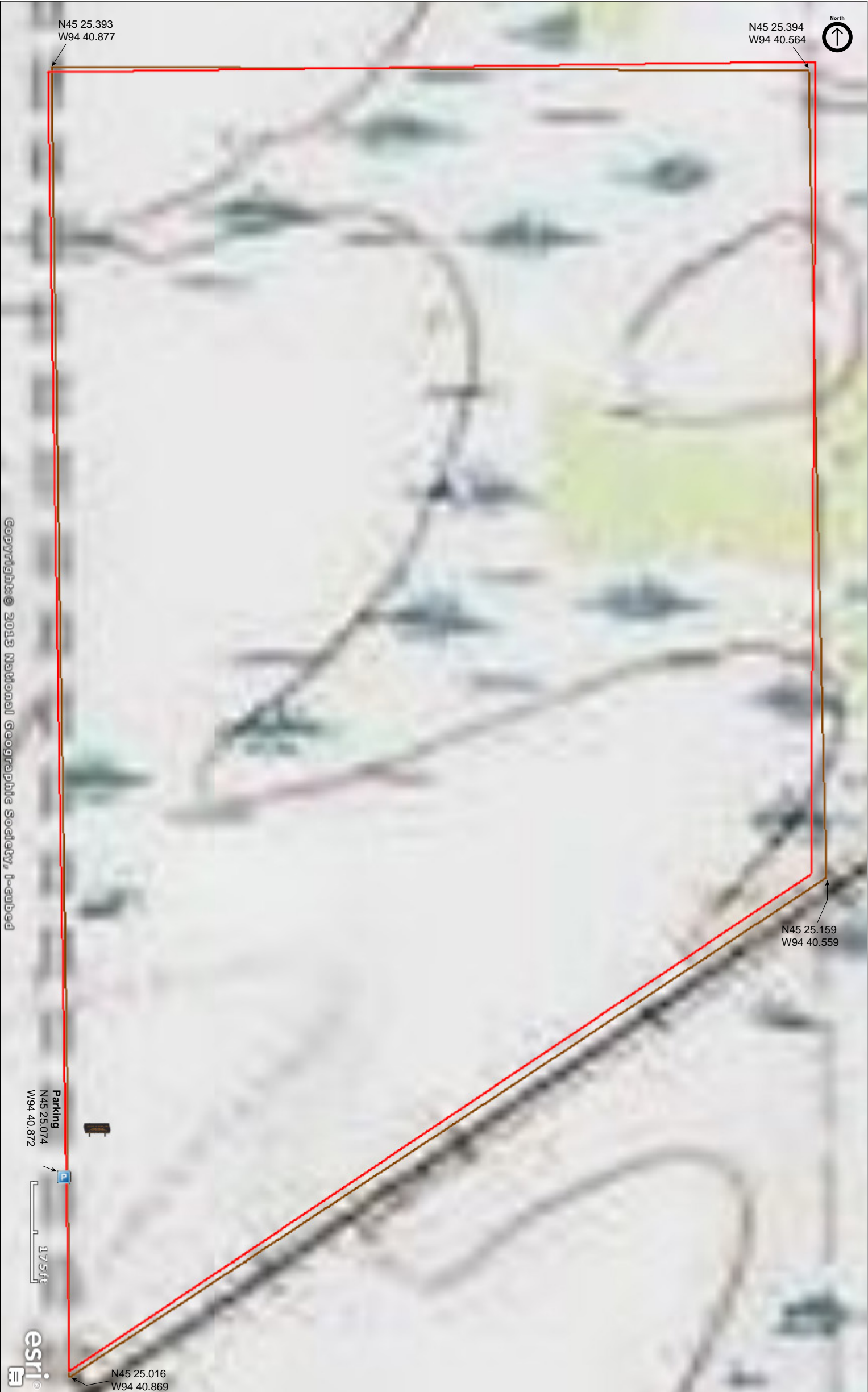
Roscoe Prairie SNA

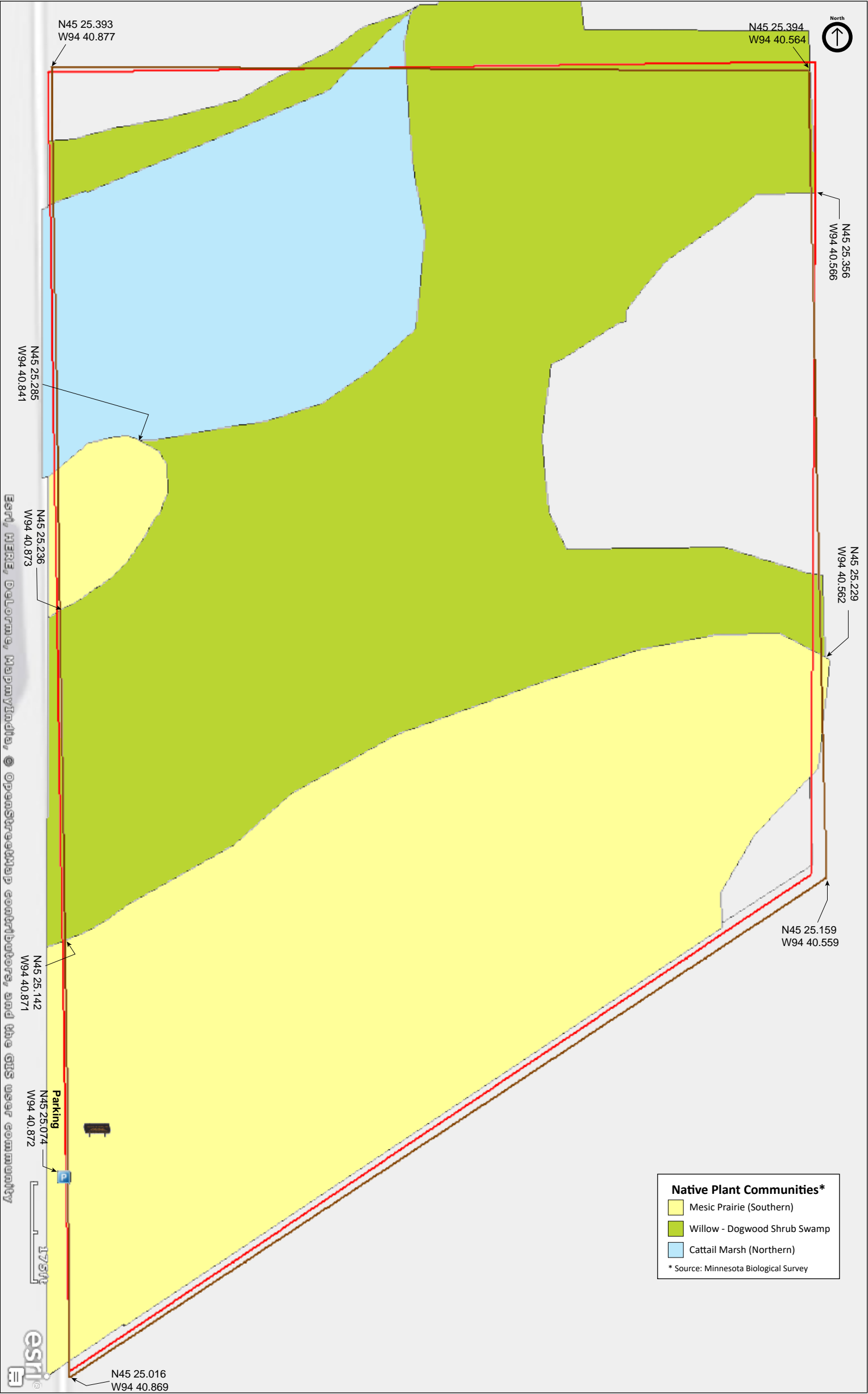
Stearns County



Roscoe Prairie SNA

Stearns County











# Roscoe Prairie SNA

## **Notes from Minnesota DNR**

**Directions:** From Roscoe 2 miles W on Co Hwy 16, then 0.6 miles S on 273rd Ave. Park in pull-off on E.

**Lat/Lon:** 45.417893, -94.681199

An undeveloped portion of the Glacial Lakes State Trail is adjacent to site.

## **Directions and Notes from The Nature Conservancy**

From Paynesville, travel north on County Road 33 for 2.5 miles to County Road 16. Turn east on C.R. 16 and travel one mile. Go south on a gravel road; drive  $\frac{1}{2}$  mile and park near the TNC sign. An abandoned railroad, now a state trail, marks the southern boundary. Nearest services are in Paynesville.

There is ... a recurring threat of woody invasion by willow and aspen in the wet prairie areas, a problem that is addressed by burning and girdling the aspen.

## **Notes from MinnesotaSeasons.com**

### **Parking**

N45 25.074, W94 40.872

### **Snowmobile Trail**

The south boundary of the SNA is adjacent to a Stearns County snowmobile trail. The trail uses an abandoned railway, the former BNSF Cold Spring Branch. It is part of a 22-mile undeveloped segment of the Glacial Lakes State Trail.

### **Wet and Dry**

The prairie is dry and the aspen woodland is mostly dry. The rest of the site is wet. Getting to the aspen woodland requires crossing a strip of willow-dogwood shrub swamp. Waterproof footwear is recommended if venturing beyond the prairie portion of this site.

## **DISCLAIMER OF WARRANTIES AND LIMITATIONS OF LIABILITY**

MinnesotaSeasons.com, The Nature Conservancy, U.S. Department of Agriculture, Forest Service, U.S. Fish and Wildlife Service, the state of Minnesota, the Minnesota Department of Natural Resources, and their employees, make no representations or warranties, express or implied, with respect to the use of or reliance on the data provided herewith, regardless of its format or means of transmission. There are no guarantees or representations to the user as to the accuracy, currency, completeness, suitability or reliability of this data for any purpose. THE USER ACCEPTS THE DATA AND/OR SOFTWARE "AS IS" AND ASSUMES ALL RISKS ASSOCIATED WITH ITS USE.

IN NO EVENT SHALL MINNESOTASEASONS.COM, TNC, USDA-FS, USFWS, OR MNDNR BE LIABLE FOR ANY DIRECT, INDIRECT, INCIDENTAL, SPECIAL, EXEMPLARY, OR CONSEQUENTIAL DAMAGES (INCLUDING, BUT NOT LIMITED TO, PROCUREMENT OF SUBSTITUTE GOODS OR SERVICES; LOSS OF USE, DATA, OR PROFITS; OR BUSINESS INTERRUPTION) HOWEVER CAUSED AND ON ANY THEORY OF LIABILITY, WHETHER IN CONTRACT, STRICT LIABILITY, OR TORT (INCLUDING NEGLIGENCE OR OTHERS) ARISING IN ANY WAY OUT OF THE USE OF THIS DATA, EVEN IF ADVISED OF THE POSSIBILITY OF SUCH DAMAGE OR FOR ANY CLAIM BY ANY OTHER PARTY.

Your use of the data is acceptance on your part of the terms and conditions set forth herein.