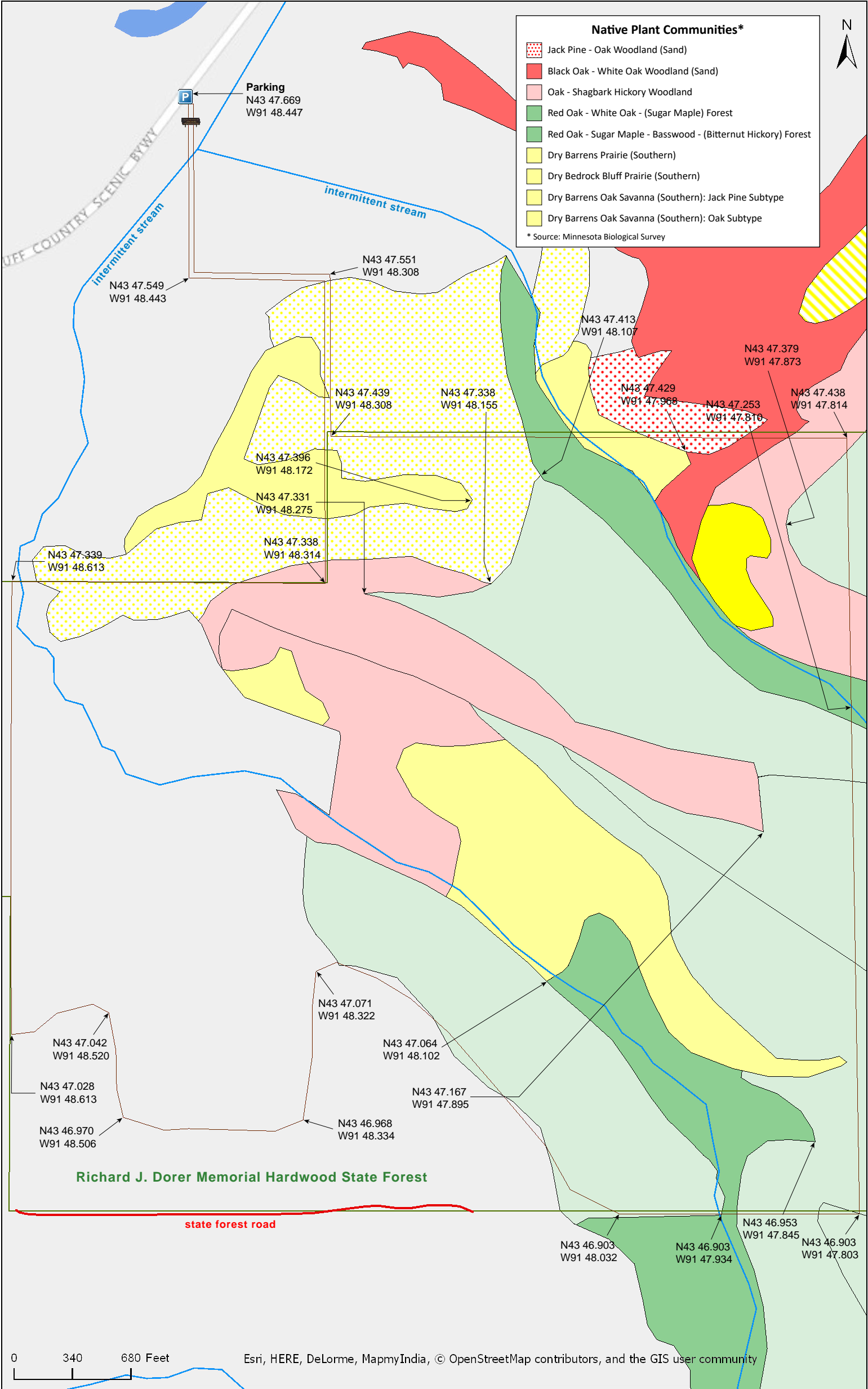


Rushford Sand Barrens SNA

Fillmore County





Rushford Sand Barrens SNA

Directions and Notes from Minnesota DNR

Directions: From Rushford 3 miles W on MN Hwy 16. Park in pull-off on S. Hike S, E, then S along treed corridor to site.

Lat/Lon: 43.794475, -91.807451

This site has no maintained trails or other recreational facilities. This site is in an Audubon Important Bird Area.

Notes from MinnesotaSeasons.com

Parking

N43 47.669, W91 48.447

In 2010, the wood routed SNA sign was completely obscured by tall shrubs. Look for a field access (crossing the roadside ditch) on the east side of the road just south of the Root River bridge. It is in front of a long row of shrubbery and trees separating two crop fields.

This site lies within the Richard J. Dorer Memorial Hardwood State Forest.

Hiking Trails

A footpath leads to the top of the first ridge.

DISCLAIMER OF WARRANTIES AND LIMITATIONS OF LIABILITY

MinnesotaSeasons.com, The Nature Conservancy, U.S. Department of Agriculture, Forest Service, U.S. Fish and Wildlife Service, the state of Minnesota, the Minnesota Department of Natural Resources, and their employees, make no representations or warranties, express or implied, with respect to the use of or reliance on the data provided herewith, regardless of its format or means of transmission. There are no guarantees or representations to the user as to the accuracy, currency, completeness, suitability or reliability of this data for any purpose. THE USER ACCEPTS THE DATA AND/OR SOFTWARE "AS IS" AND ASSUMES ALL RISKS ASSOCIATED WITH ITS USE.

IN NO EVENT SHALL MINNESOTASEASONS.COM, TNC, USDA-FS, USFWS, OR MNDNR BE LIABLE FOR ANY DIRECT, INDIRECT, INCIDENTAL, SPECIAL, EXEMPLARY, OR CONSEQUENTIAL DAMAGES (INCLUDING, BUT NOT LIMITED TO, PROCUREMENT OF SUBSTITUTE GOODS OR SERVICES; LOSS OF USE, DATA, OR PROFITS; OR BUSINESS INTERRUPTION) HOWEVER CAUSED AND ON ANY THEORY OF LIABILITY, WHETHER IN CONTRACT, STRICT LIABILITY, OR TORT (INCLUDING NEGLIGENCE OR OTHERS) ARISING IN ANY WAY OUT OF THE USE OF THIS DATA, EVEN IF ADVISED OF THE POSSIBILITY OF SUCH DAMAGE OR FOR ANY CLAIM BY ANY OTHER PARTY.

Your use of the data is acceptance on your part of the terms and conditions set forth herein.