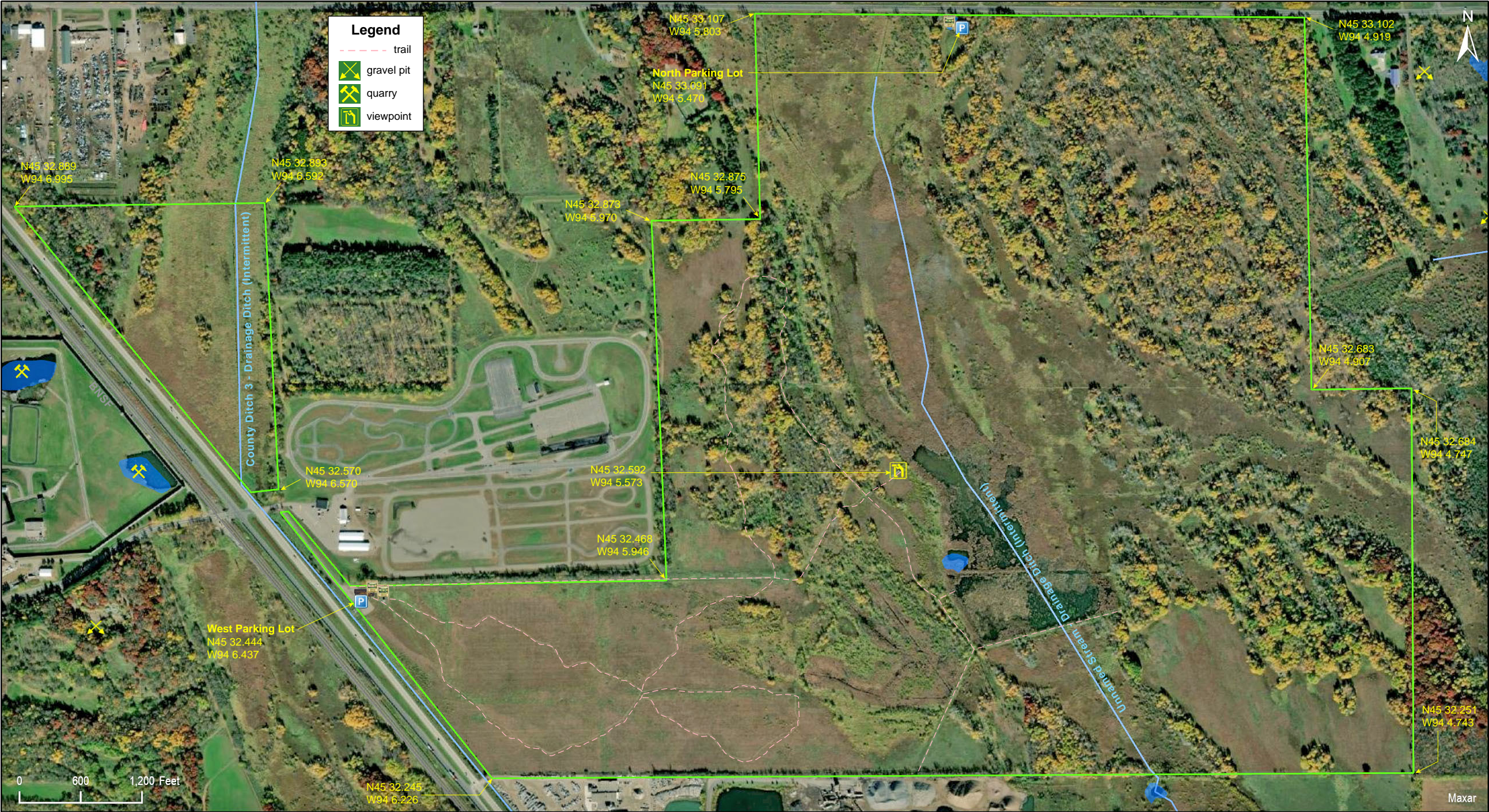


Sand Prairie Wildlife Management & Environmental Education Area

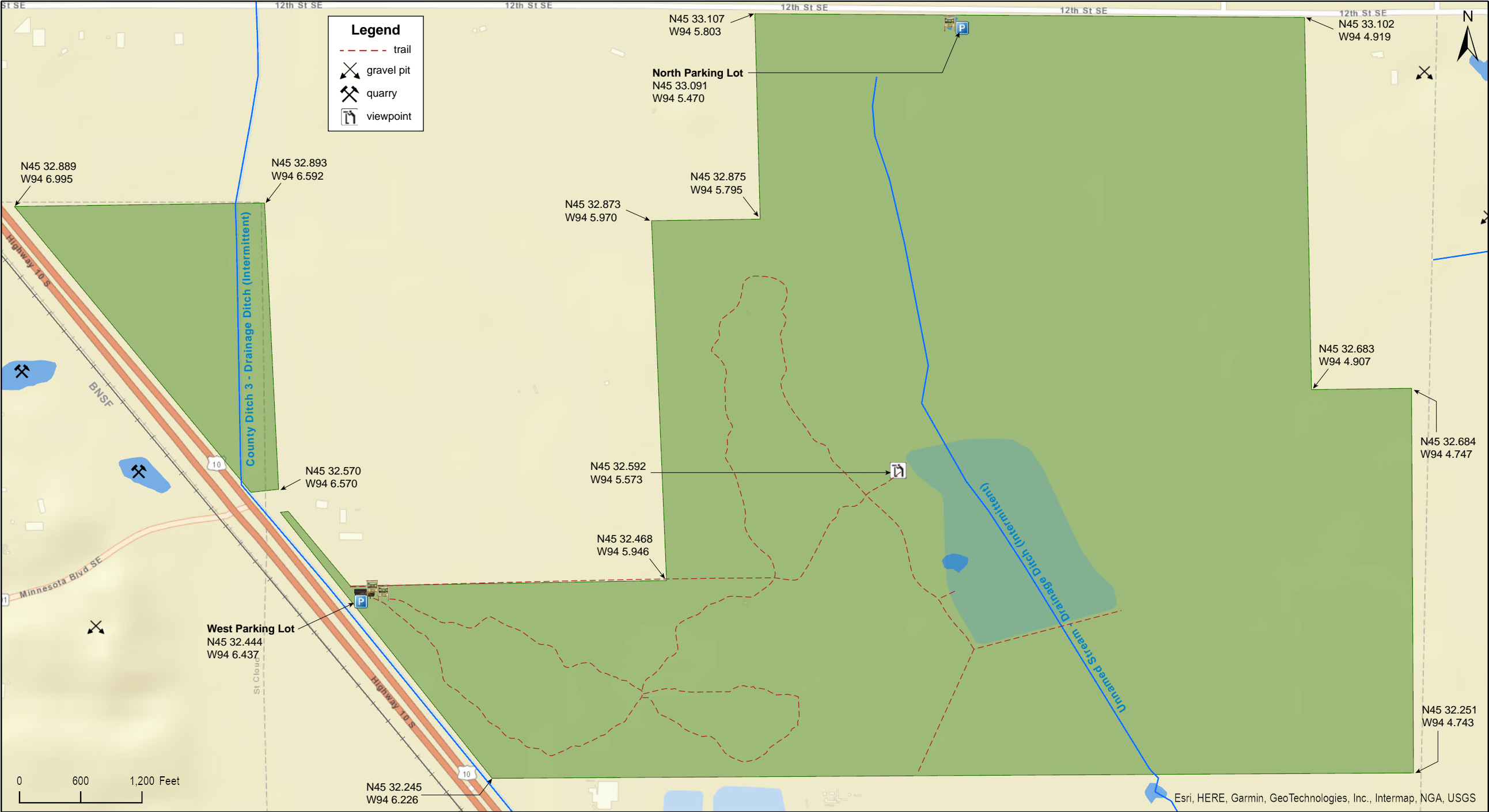
Sherburne County





Sand Prairie Wildlife Management & Environmental Education Area

Sherburne County





Sherburne County

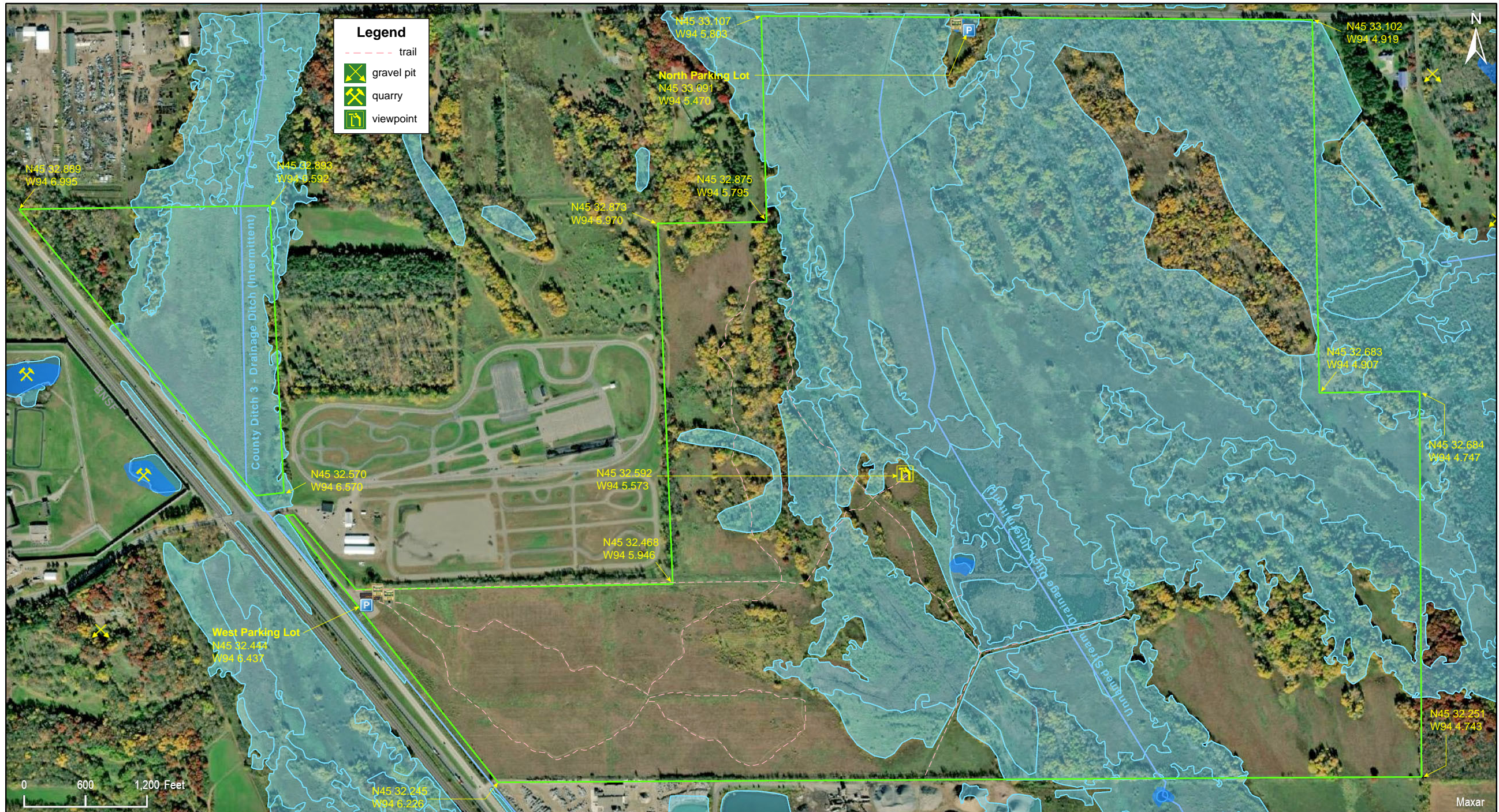




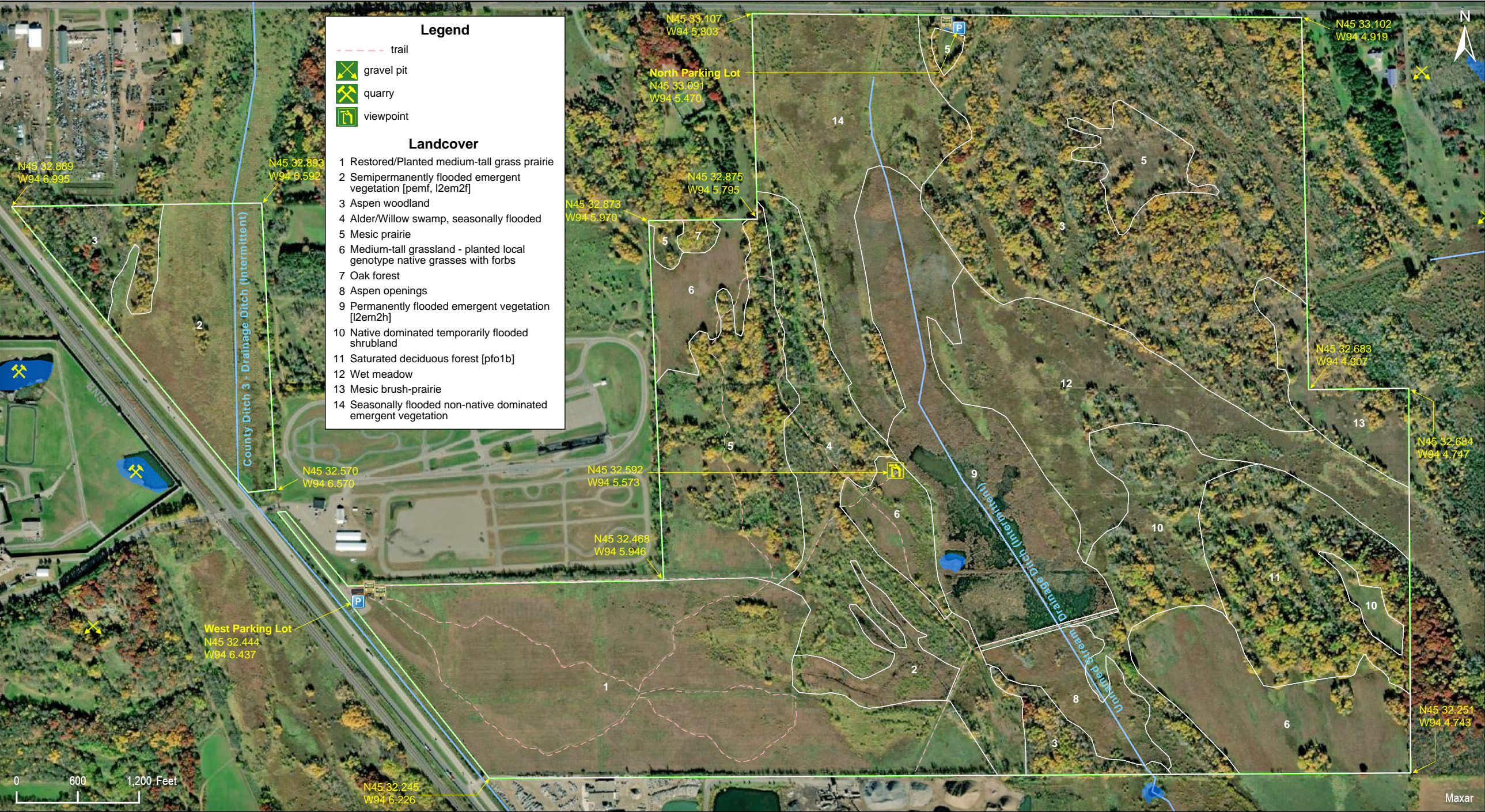
Sherburne County













# Sand Prairie Wildlife Management & Environmental Education Area

## **Directions and Notes from Minnesota DNR**

### **Directions**

2 miles east of St. Cloud within Sections 4,5,8,and 9, T35N, R30W, Sherburne County.

In addition to its status as a WMA, Sand Prairie is the first WMA also designated as an Environmental Education Area. Numerous local school and college students and teachers routinely visit and study the Sand Prairie ecosystem.

## **Notes from MinnesotaSeasons.com**

### **Parking**

#### **West Parking Lot**

N45 32.444, W94 6.437

#### **North Parking Lot**

N45 33.091, W94 5.470

### **Hiking Trails**

There are wide mowed trails on the western part of the site. The Brushland Trail has two low areas where there may be three to five inches of standing water.

## **DISCLAIMER OF WARRANTIES AND LIMITATIONS OF LIABILITY**

MinnesotaSeasons.com, The Nature Conservancy, U.S. Department of Agriculture, Forest Service, U.S. Fish and Wildlife Service, the state of Minnesota, the Minnesota Department of Natural Resources, and their employees, make no representations or warranties, express or implied, with respect to the use of or reliance on the data provided herewith, regardless of its format or means of transmission. There are no guarantees or representations to the user as to the accuracy, currency, completeness, suitability or reliability of this data for any purpose. THE USER ACCEPTS THE DATA AND/OR SOFTWARE "AS IS" AND ASSUMES ALL RISKS ASSOCIATED WITH ITS USE.

IN NO EVENT SHALL MINNESOTASEASONS.COM, TNC, USDA-FS, USFWS, OR MNDNR BE LIABLE FOR ANY DIRECT, INDIRECT, INCIDENTAL, SPECIAL, EXEMPLARY, OR CONSEQUENTIAL DAMAGES (INCLUDING, BUT NOT LIMITED TO, PROCUREMENT OF SUBSTITUTE GOODS OR SERVICES; LOSS OF USE, DATA, OR PROFITS; OR BUSINESS INTERRUPTION) HOWEVER CAUSED AND ON ANY THEORY OF LIABILITY, WHETHER IN CONTRACT, STRICT LIABILITY, OR TORT (INCLUDING NEGLIGENCE OR OTHERS) ARISING IN ANY WAY OUT OF THE USE OF THIS DATA, EVEN IF ADVISED OF THE POSSIBILITY OF SUCH DAMAGE OR FOR ANY CLAIM BY ANY OTHER PARTY.

Your use of the data is acceptance on your part of the terms and conditions set forth herein.