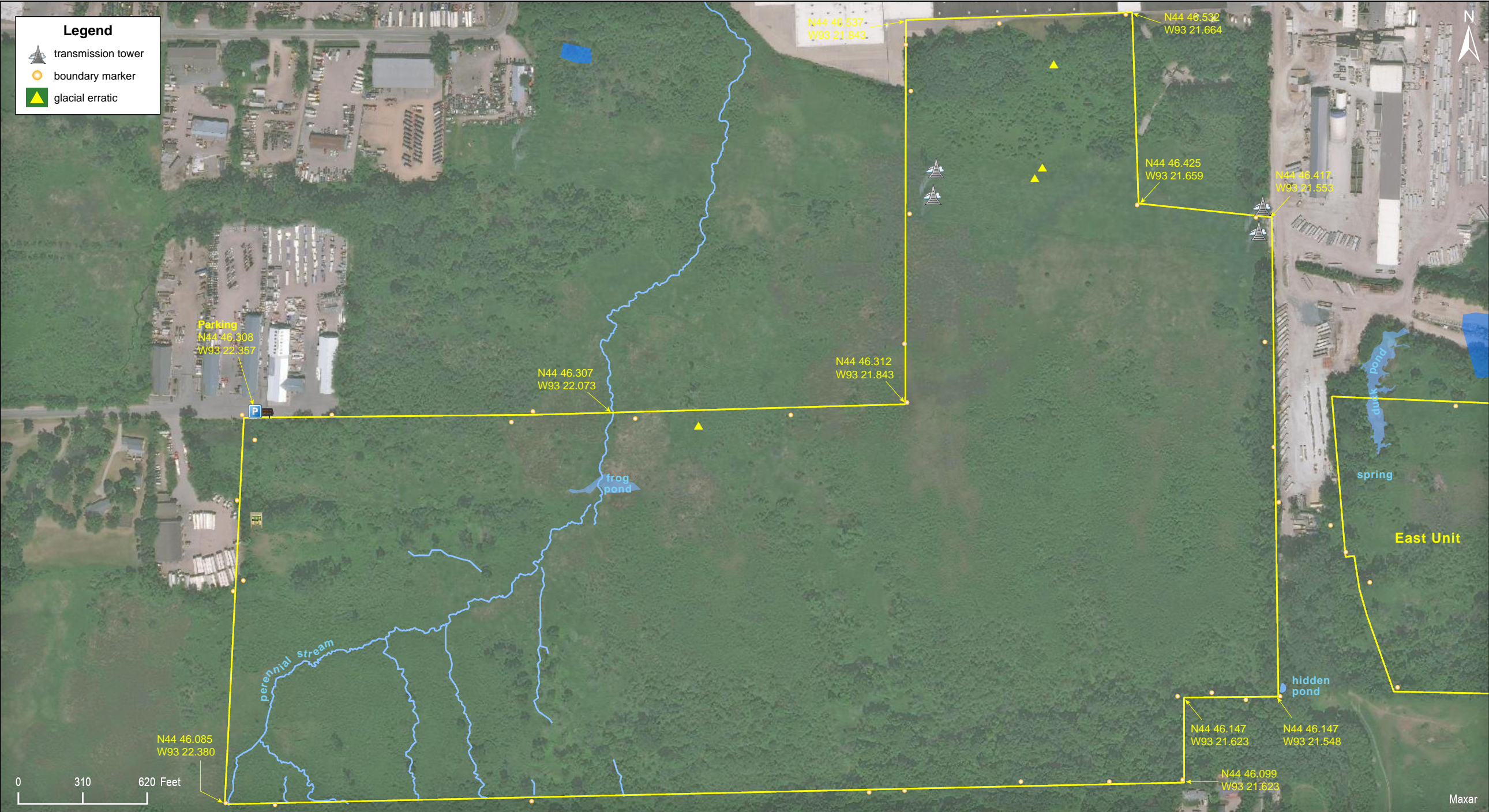


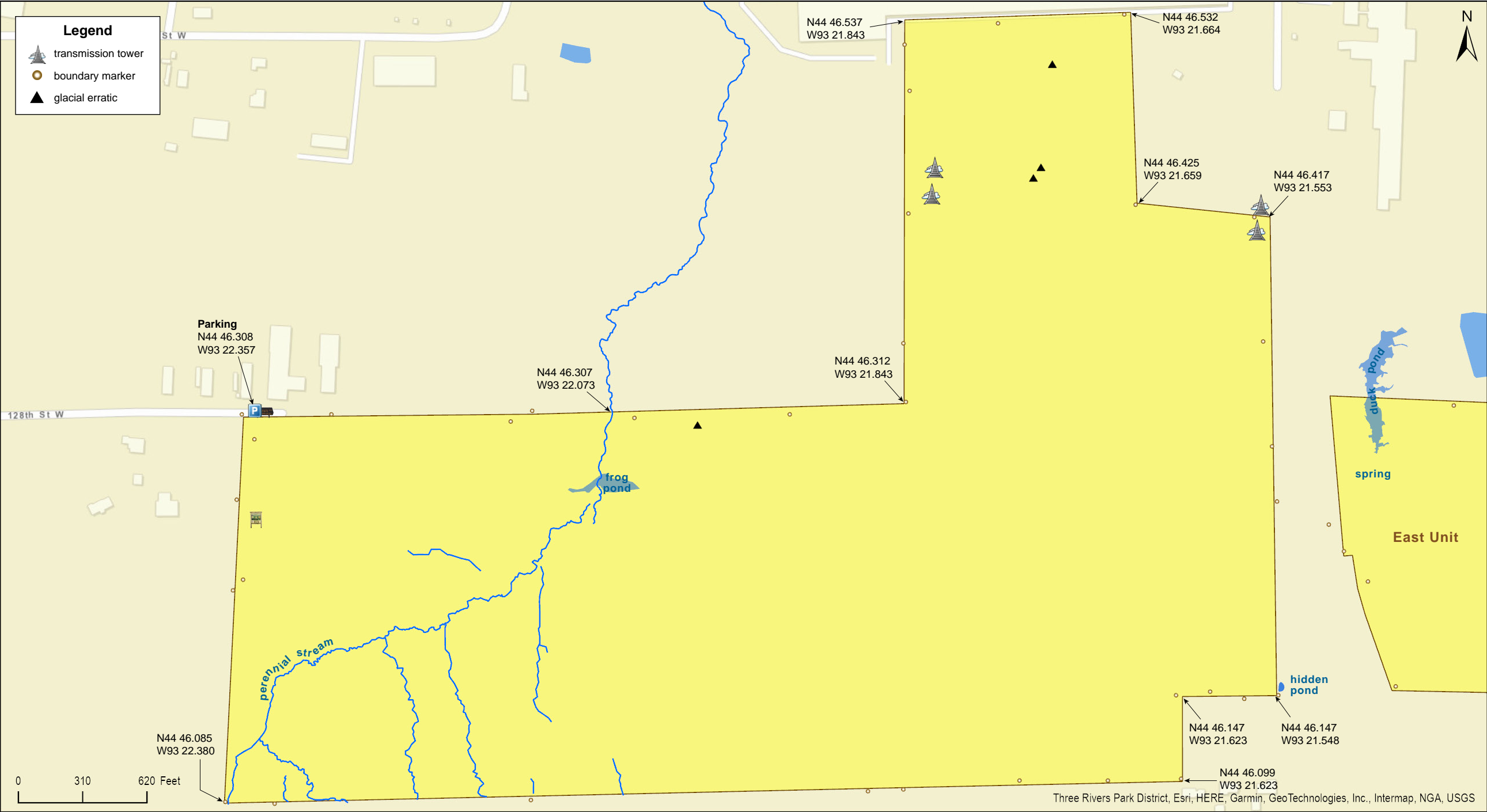
Savage Fen SNA
West Unit

Scott County



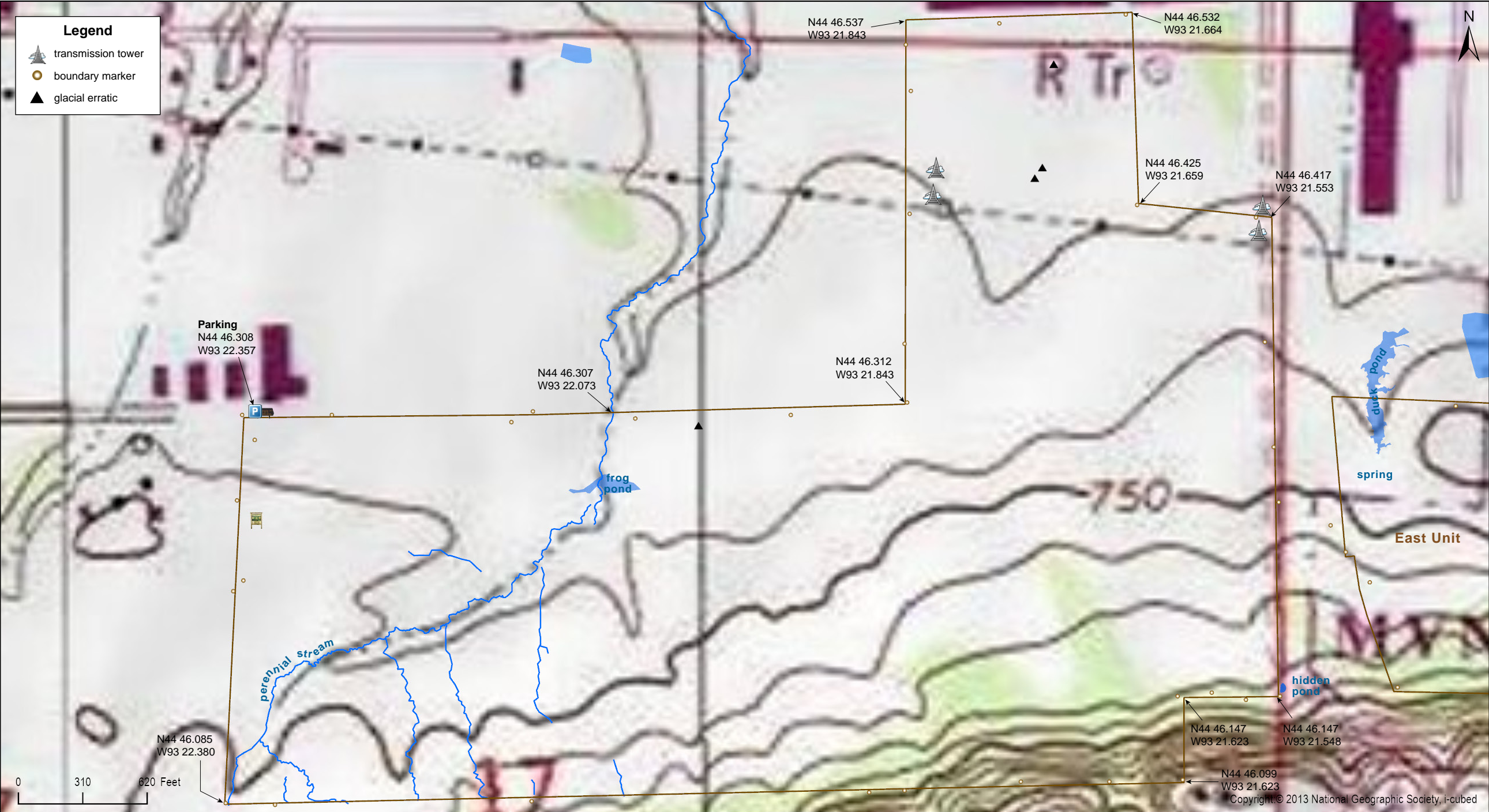
Savage Fen SNA
West Unit

Scott County



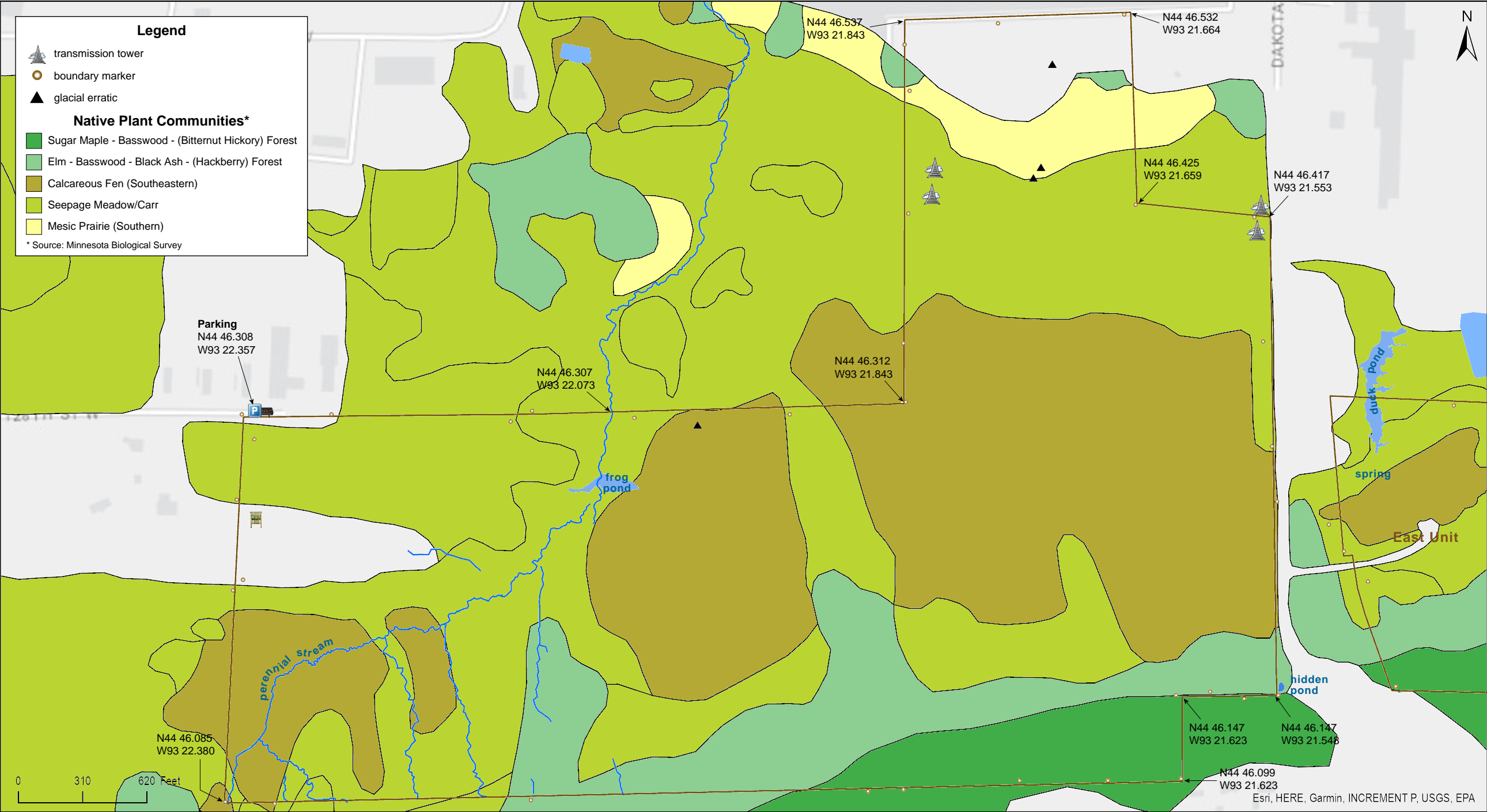
Savage Fen SNA
West Unit

Scott County

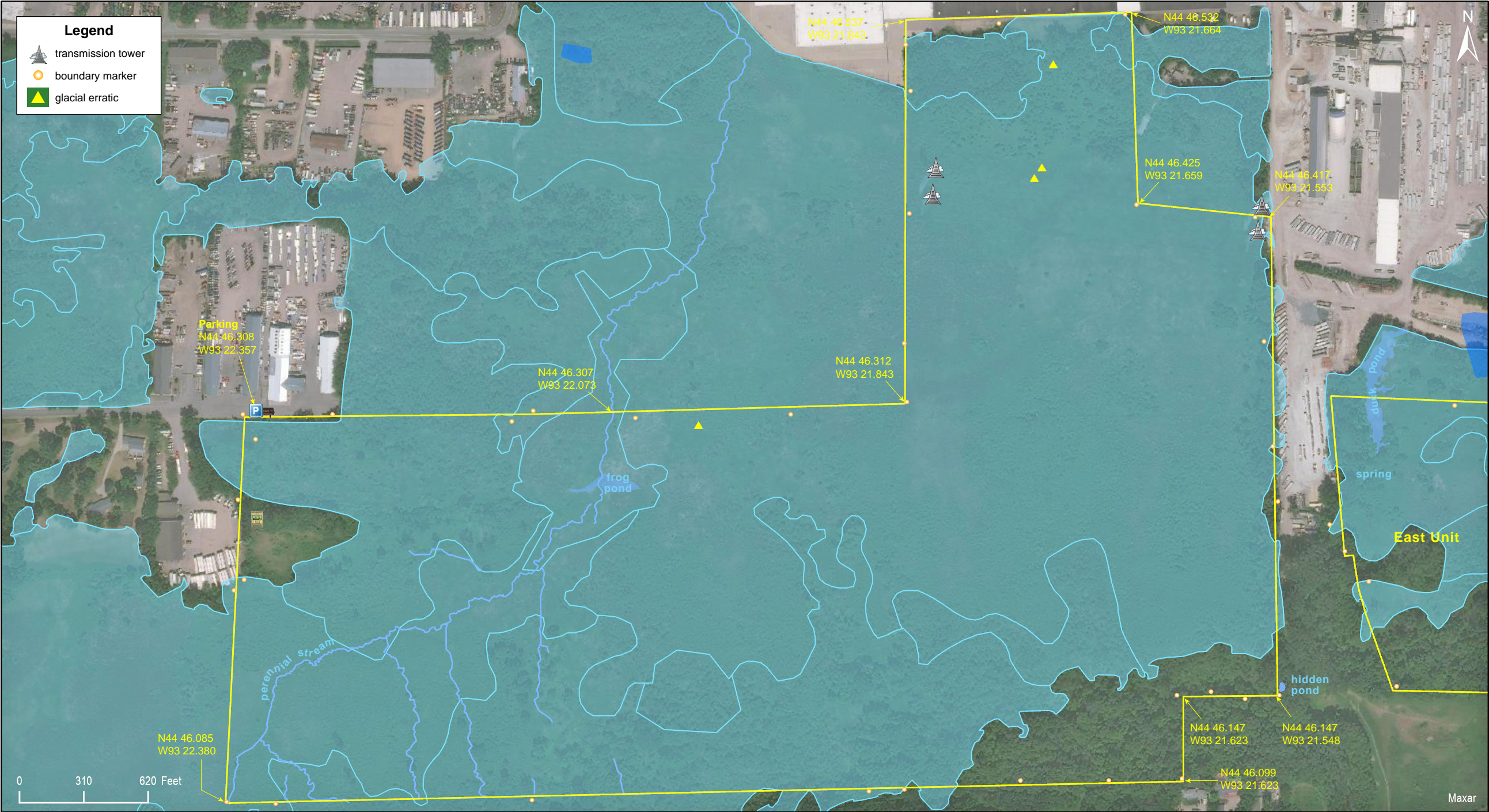


Savage Fen SNA
West Unit

Scott County



Savage Fen SNA West Unit



Savage Fen SNA West Unit

Directions and Notes from Minnesota DNR

Directions

In Savage 0.5 mile S on MN Hwy 13, then 0.25 mile E on 128th St. Park on S side near dead end.

Lat/Lon

44.771794, -93.37262

Please do not park along Dakota Avenue (Co Hwy 27).

This site has no maintained trails or other recreational facilities.

Notes from MinnesotaSeasons.com

Parking

The paved lot bordering the northwest corner of West Unit is private property. Permission has been granted by the owner to park between the wood routed sign and the SNA corner boundary sign. There is room for two cars. Additional cars should park along 128th St.

N44 46.308, W93 22.357

Hiking Trails

Although there are no maintained trails, there are several trails on the East Unit. A utility road leads from the parking area south into the SNA then west to Quentin Ave. S. The roadbed is raised and should be accessible even during spring flooding. Near the east end of this road a forest road (former USF&WS administrative road) leads south into the forest then west along the base of the bluff. Where the administrative road turns west a well worn trail continues straight up the bluff. This trail and a few connecting trails lead west and south to a housing development. On the West Unit, beginning near the SNA information sign, a footpath leads east a short distance then disappears.

DISCLAIMER OF WARRANTIES AND LIMITATIONS OF LIABILITY

MinnesotaSeasons.com, The Nature Conservancy, U.S. Department of Agriculture, Forest Service, U.S. Fish and Wildlife Service, the state of Minnesota, the Minnesota Department of Natural Resources, and their employees, make no representations or warranties, express or implied, with respect to the use of or reliance on the data provided herewith, regardless of its format or means of transmission. There are no guarantees or representations to the user as to the accuracy, currency, completeness, suitability or reliability of this data for any purpose. THE USER ACCEPTS THE DATA AND/OR SOFTWARE "AS IS" AND ASSUMES ALL RISKS ASSOCIATED WITH ITS USE.

IN NO EVENT SHALL MINNESOTASEASONS.COM, TNC, USDA-FS, USFWS, OR MNDNR BE LIABLE FOR ANY DIRECT, INDIRECT, INCIDENTAL, SPECIAL, EXEMPLARY, OR CONSEQUENTIAL DAMAGES (INCLUDING, BUT NOT LIMITED TO, PROCUREMENT OF SUBSTITUTE GOODS OR SERVICES; LOSS OF USE, DATA, OR PROFITS; OR BUSINESS INTERRUPTION) HOWEVER CAUSED AND ON ANY THEORY OF LIABILITY, WHETHER IN CONTRACT, STRICT LIABILITY, OR TORT (INCLUDING NEGLIGENCE OR OTHERS) ARISING IN ANY WAY OUT OF THE USE OF THIS DATA, EVEN IF ADVISED OF THE POSSIBILITY OF SUCH DAMAGE OR FOR ANY CLAIM BY ANY OTHER PARTY.

Your use of the data is acceptance on your part of the terms and conditions set forth herein.