

Seven Sisters Prairie

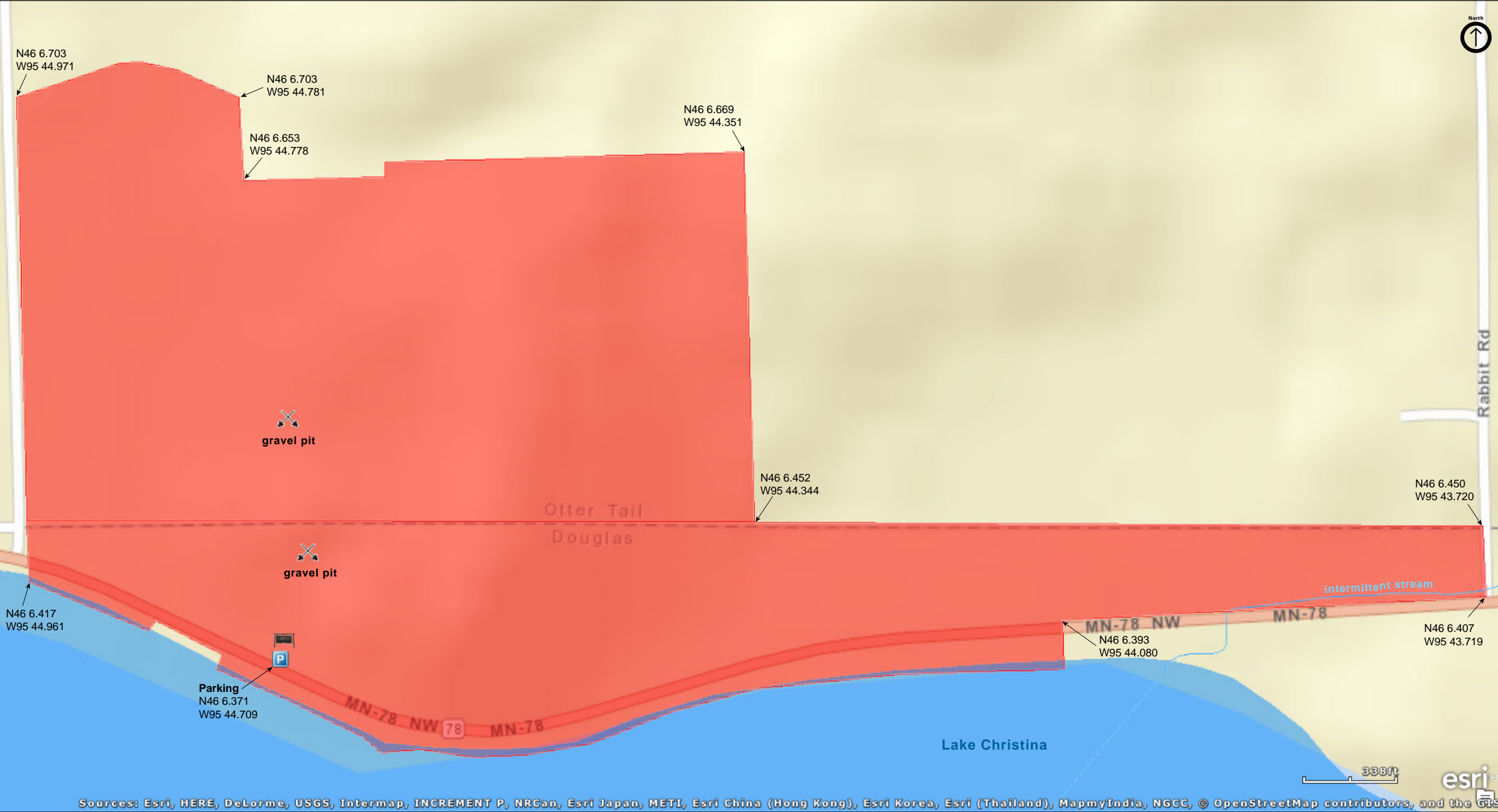
Douglas and Otter Tail Counties





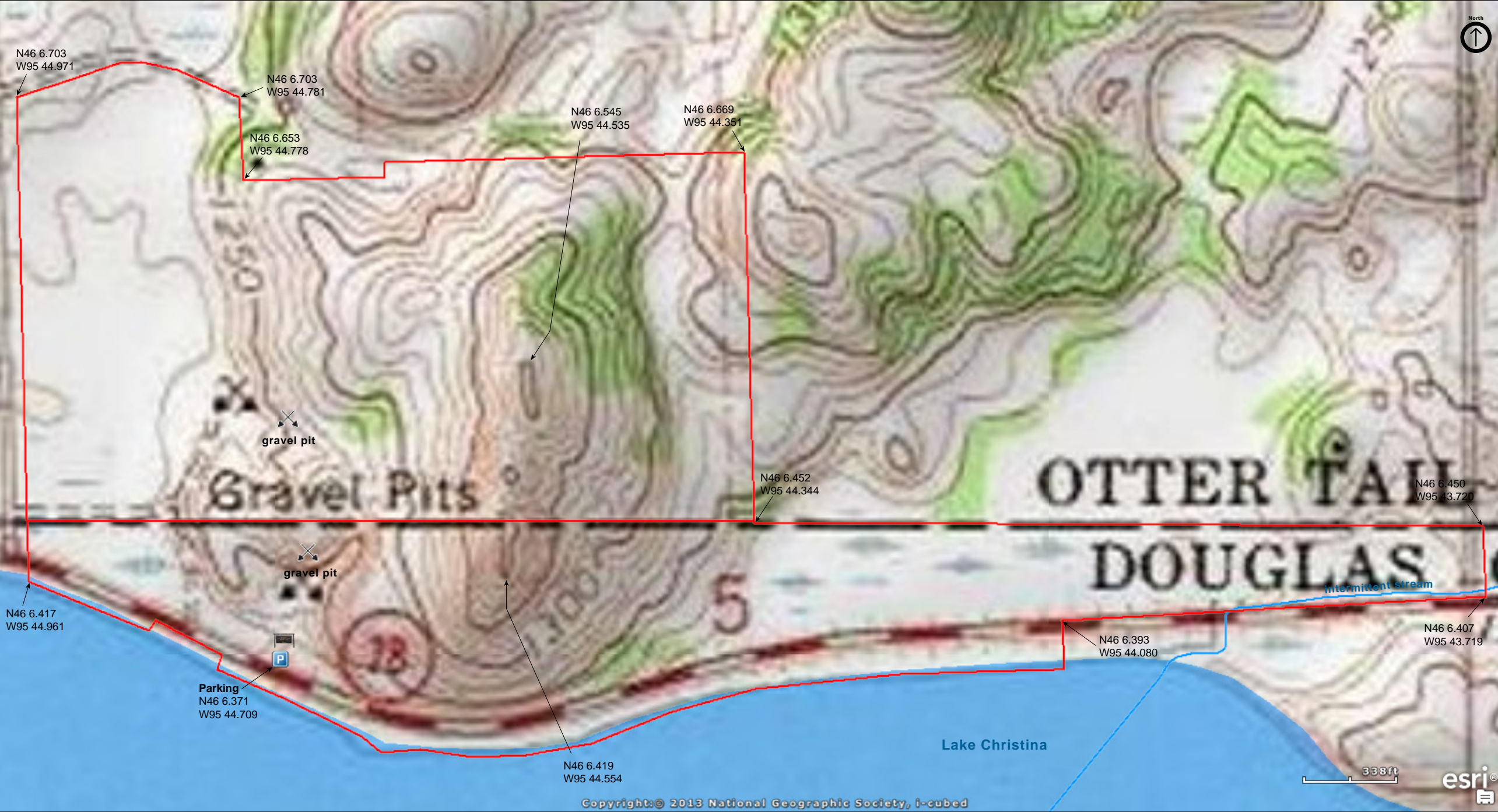
Seven Sisters Prairie

Douglas and Otter Tail Counties



Seven Sisters Prairie

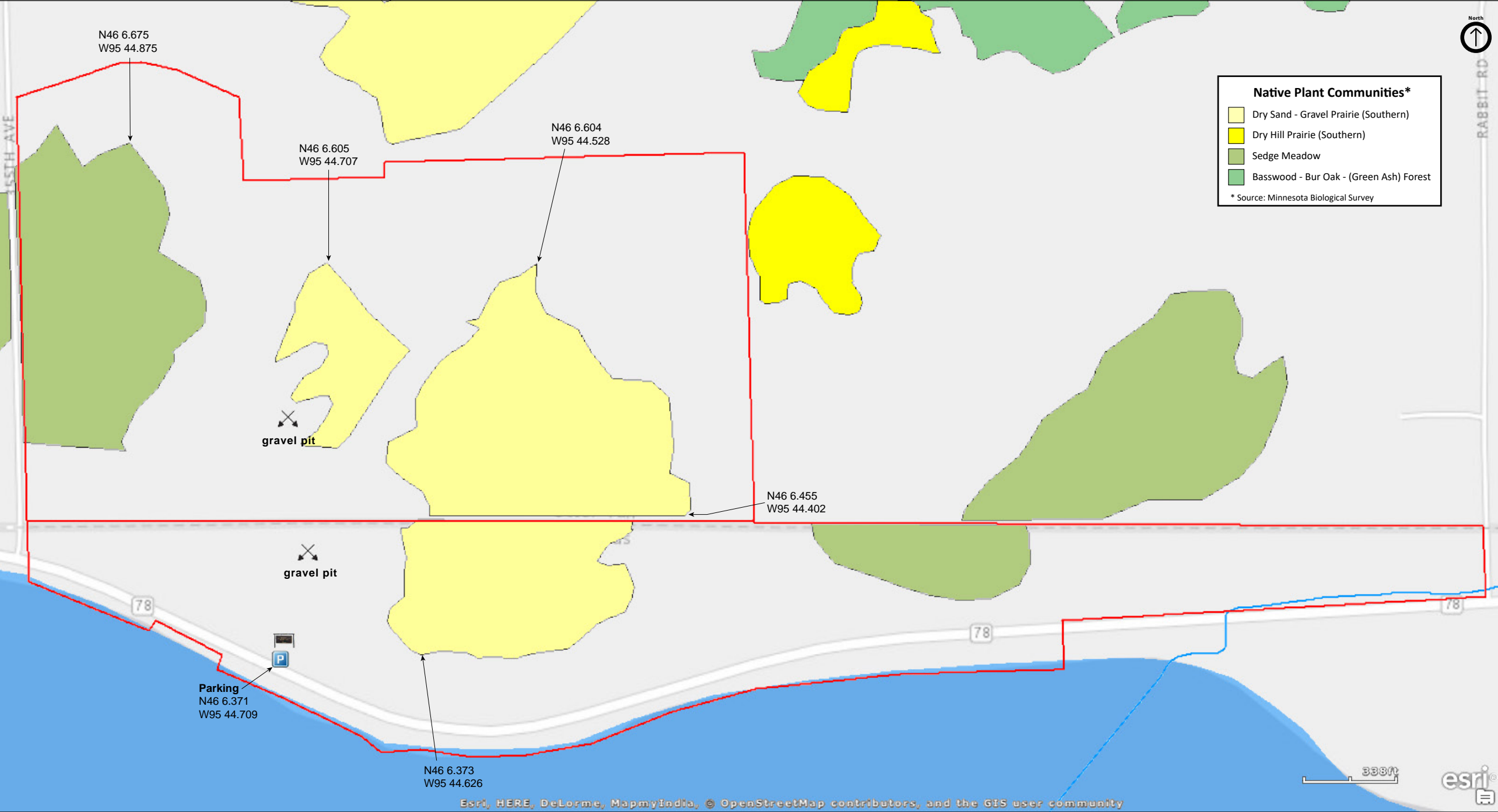
Douglas and Otter Tail Counties





Seven Sisters Prairie

Douglas and Otter Tail Counties









# Seven Sisters Prairie

## **Directions and Notes from The Nature Conservancy**

Take the Ashby exit off I-94 and go north through town on Hwy 78. Seven Sisters Preserve is the notable ridge on the north side of the road about three miles east of Ashby, along the shore of Lake Christina. Park in front of the gated road leading into the gravel pit.

Measures to control invasive European buckthorn and prickly ash are especially important to the health of the preserve. Erosion threatens a population of broom-rape which grows in and around the gully.

The rim of the gravel pit is especially vulnerable to human erosion and visitors are asked to avoid this area.

## **Notes from MinnesotaSeasons.com**

### **Parking**

N46 6.370, W95 44.746

This is a popular site. Expect to see other visitors, even on weekdays. There is room for two vehicles in the small parking spot. When parking, pull to one side of the parking spot, leaving room for another.

## **DISCLAIMER OF WARRANTIES AND LIMITATIONS OF LIABILITY**

MinnesotaSeasons.com, The Nature Conservancy, U.S. Department of Agriculture, Forest Service, U.S. Fish and Wildlife Service, the state of Minnesota, the Minnesota Department of Natural Resources, and their employees, make no representations or warranties, express or implied, with respect to the use of or reliance on the data provided herewith, regardless of its format or means of transmission. There are no guarantees or representations to the user as to the accuracy, currency, completeness, suitability or reliability of this data for any purpose. THE USER ACCEPTS THE DATA AND/OR SOFTWARE "AS IS" AND ASSUMES ALL RISKS ASSOCIATED WITH ITS USE.

IN NO EVENT SHALL MINNESOTASEASONS.COM, TNC, USDA-FS, USFWS, OR MNDNR BE LIABLE FOR ANY DIRECT, INDIRECT, INCIDENTAL, SPECIAL, EXEMPLARY, OR CONSEQUENTIAL DAMAGES (INCLUDING, BUT NOT LIMITED TO, PROCUREMENT OF SUBSTITUTE GOODS OR SERVICES; LOSS OF USE, DATA, OR PROFITS; OR BUSINESS INTERRUPTION) HOWEVER CAUSED AND ON ANY THEORY OF LIABILITY, WHETHER IN CONTRACT, STRICT LIABILITY, OR TORT (INCLUDING NEGLIGENCE OR OTHERS) ARISING IN ANY WAY OUT OF THE USE OF THIS DATA, EVEN IF ADVISED OF THE POSSIBILITY OF SUCH DAMAGE OR FOR ANY CLAIM BY ANY OTHER PARTY.

Your use of the data is acceptance on your part of the terms and conditions set forth herein.