

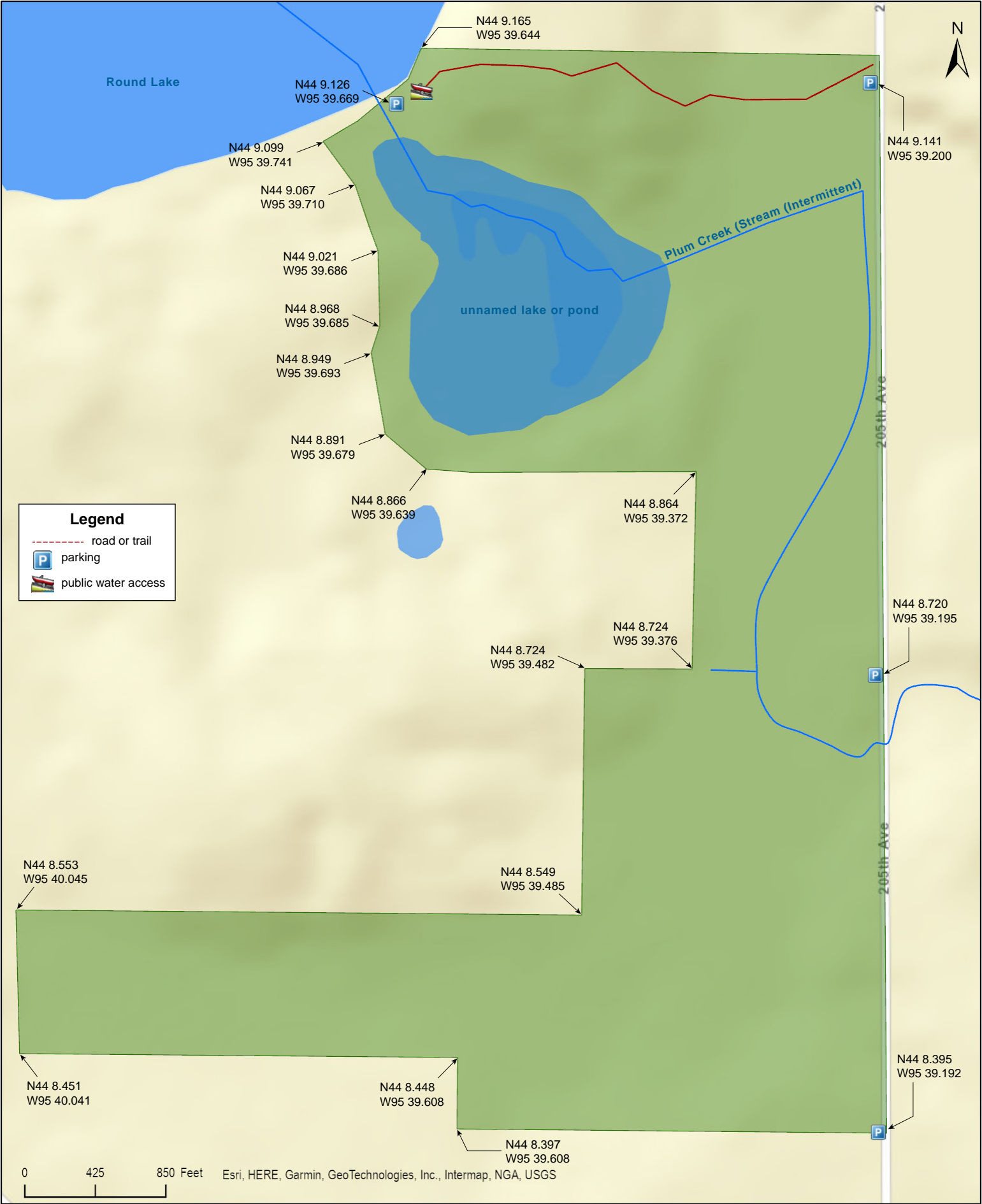
Shetek WMA
West Unit

Murray County



Shetek WMA
West Unit

Murray County



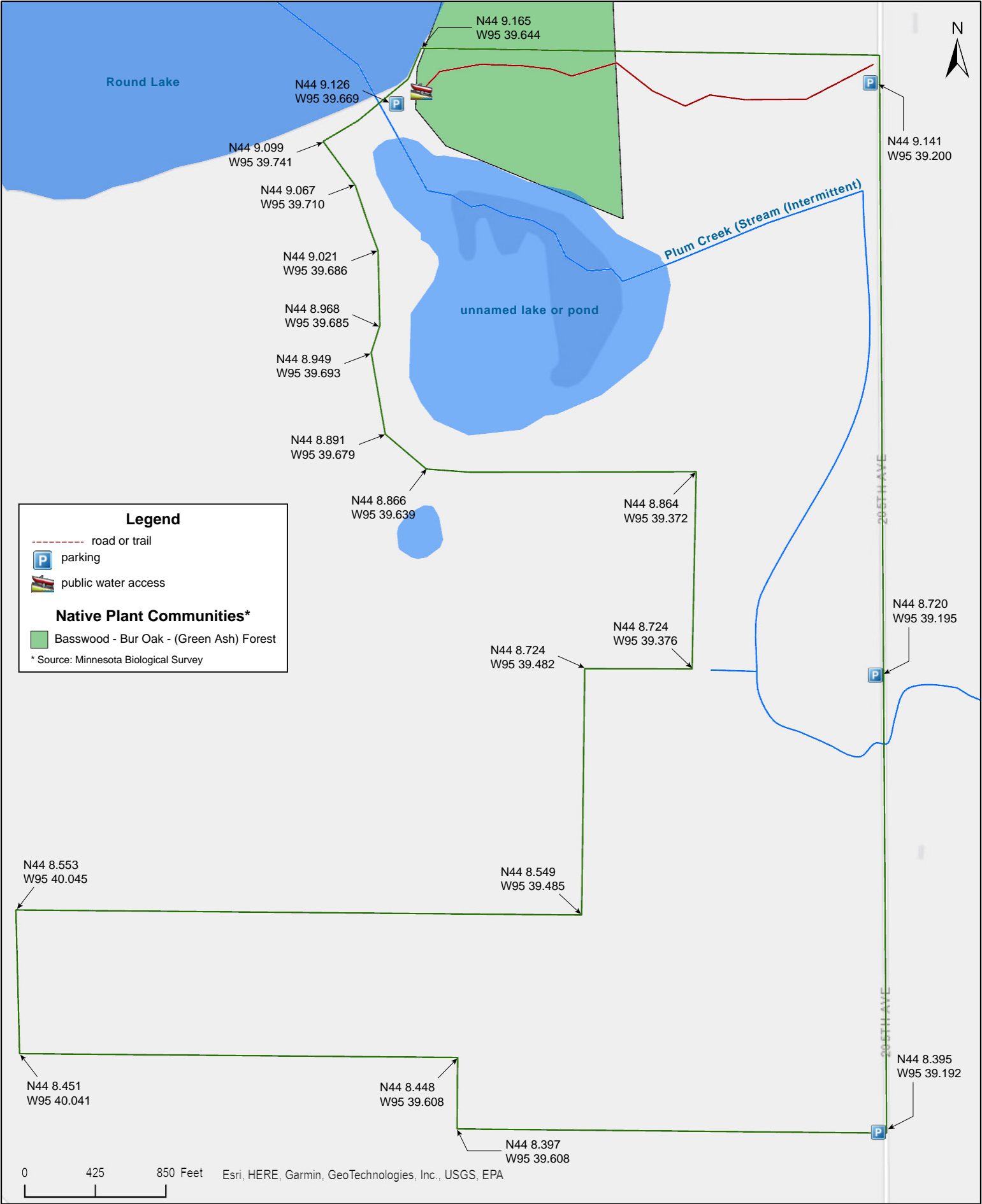
Shetek WMA
West Unit

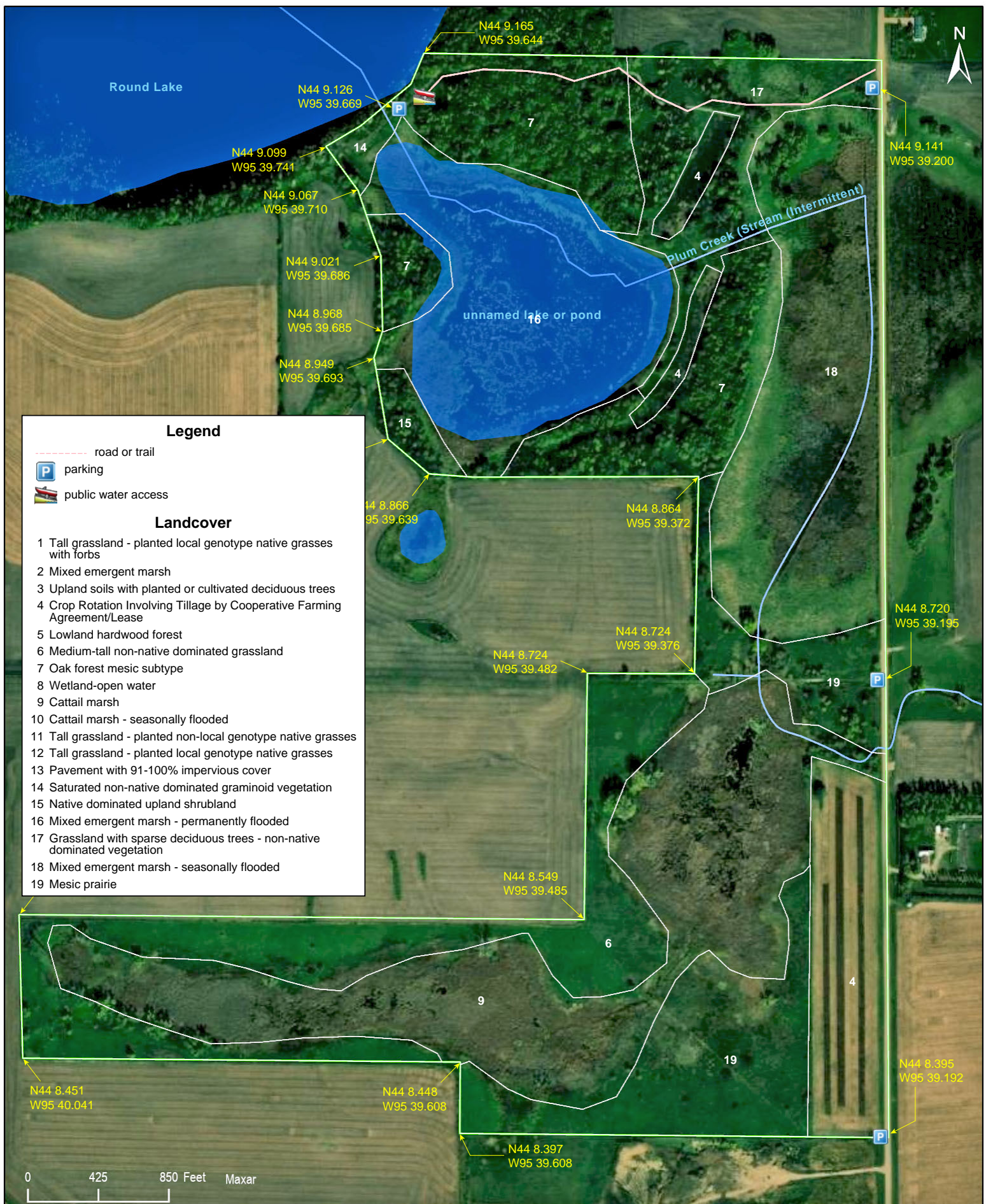
Murray County



Shetek WMA
West Unit

Murray County







Shetek WMA West Unit

Directions and Notes from Minnesota DNR

Directions

From Tracey, go 4 miles south on County Road 38, then 1.5 miles west on County Road 21, then 1 mile south on township road.

There is a carry-in water access to Clear Lake on this subunit.

Notes from MinnesotaSeasons.com

Parking

There is a "Road or Trail" at the northeast corner of the unit, and a parking lot with a natural grass surface where the road begins.
N44 9.141, W95 39.200

There is another parking lot with a natural grass surface where the "Road or Trail" ends 0.4 miles to the west.
N44 9.126, W95 39.669

There is a field approach on the west side of 205th Ave.
N44 8.720, W95 39.195

There is a another field approach on the west side of 205th Ave.
N44 8.395, W95 39.192

When parking across a field approach, care should be taken to avoid blocking access to the field.

DISCLAIMER OF WARRANTIES AND LIMITATIONS OF LIABILITY

MinnesotaSeasons.com, The Nature Conservancy, U.S. Department of Agriculture, Forest Service, U.S. Fish and Wildlife Service, the state of Minnesota, the Minnesota Department of Natural Resources, and their employees, make no representations or warranties, express or implied, with respect to the use of or reliance on the data provided herewith, regardless of its format or means of transmission. There are no guarantees or representations to the user as to the accuracy, currency, completeness, suitability or reliability of this data for any purpose. THE USER ACCEPTS THE DATA AND/OR SOFTWARE "AS IS" AND ASSUMES ALL RISKS ASSOCIATED WITH ITS USE.

IN NO EVENT SHALL MINNESOTASEASONS.COM, TNC, USDA-FS, USFWS, OR MNDNR BE LIABLE FOR ANY DIRECT, INDIRECT, INCIDENTAL, SPECIAL, EXEMPLARY, OR CONSEQUENTIAL DAMAGES (INCLUDING, BUT NOT LIMITED TO, PROCUREMENT OF SUBSTITUTE GOODS OR SERVICES; LOSS OF USE, DATA, OR PROFITS; OR BUSINESS INTERRUPTION) HOWEVER CAUSED AND ON ANY THEORY OF LIABILITY, WHETHER IN CONTRACT, STRICT LIABILITY, OR TORT (INCLUDING NEGLIGENCE OR OTHERS) ARISING IN ANY WAY OUT OF THE USE OF THIS DATA, EVEN IF ADVISED OF THE POSSIBILITY OF SUCH DAMAGE OR FOR ANY CLAIM BY ANY OTHER PARTY.

Your use of the data is acceptance on your part of the terms and conditions set forth herein.