

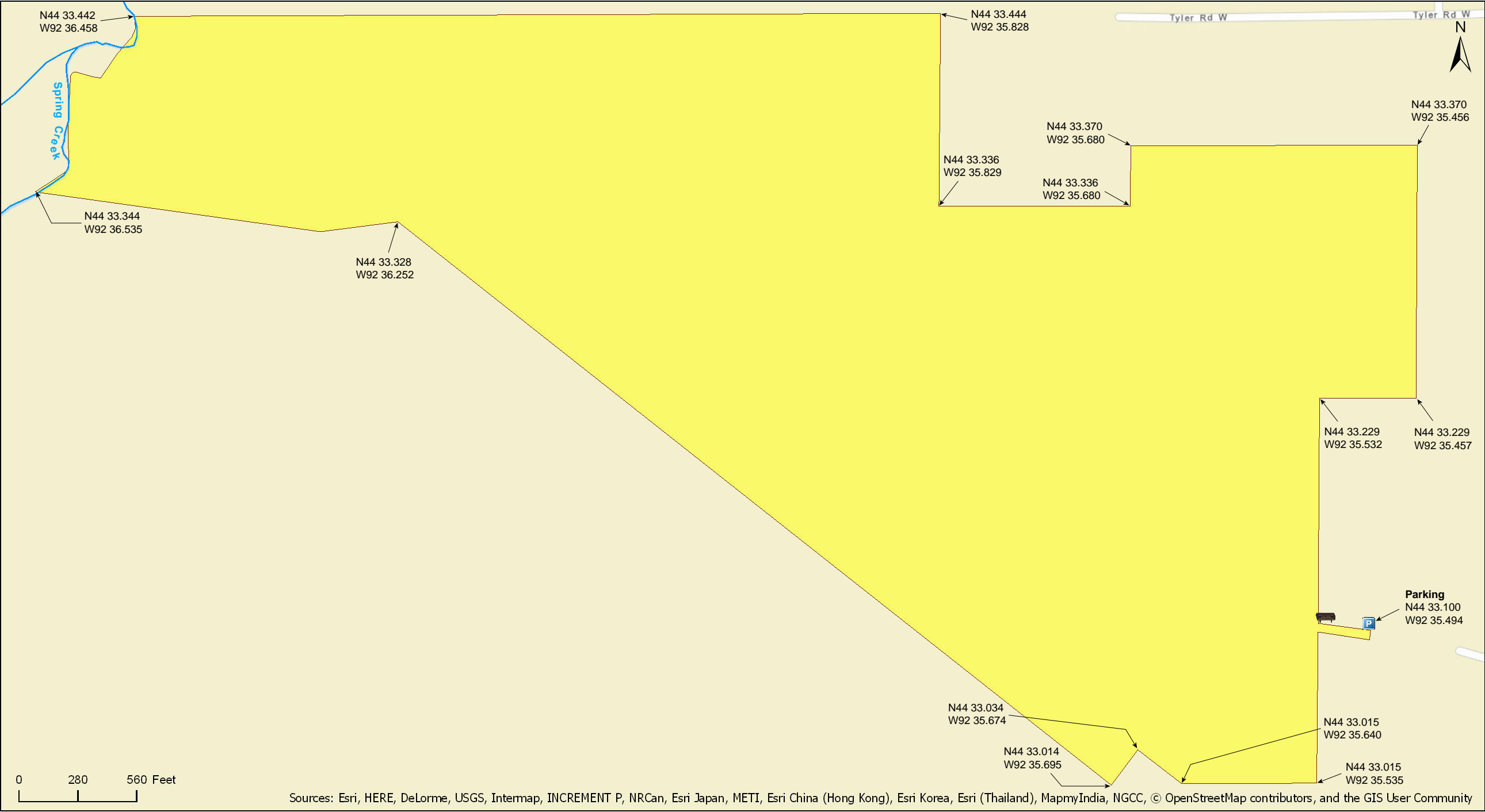
Spring Creek Prairie SNA

Goodhue County



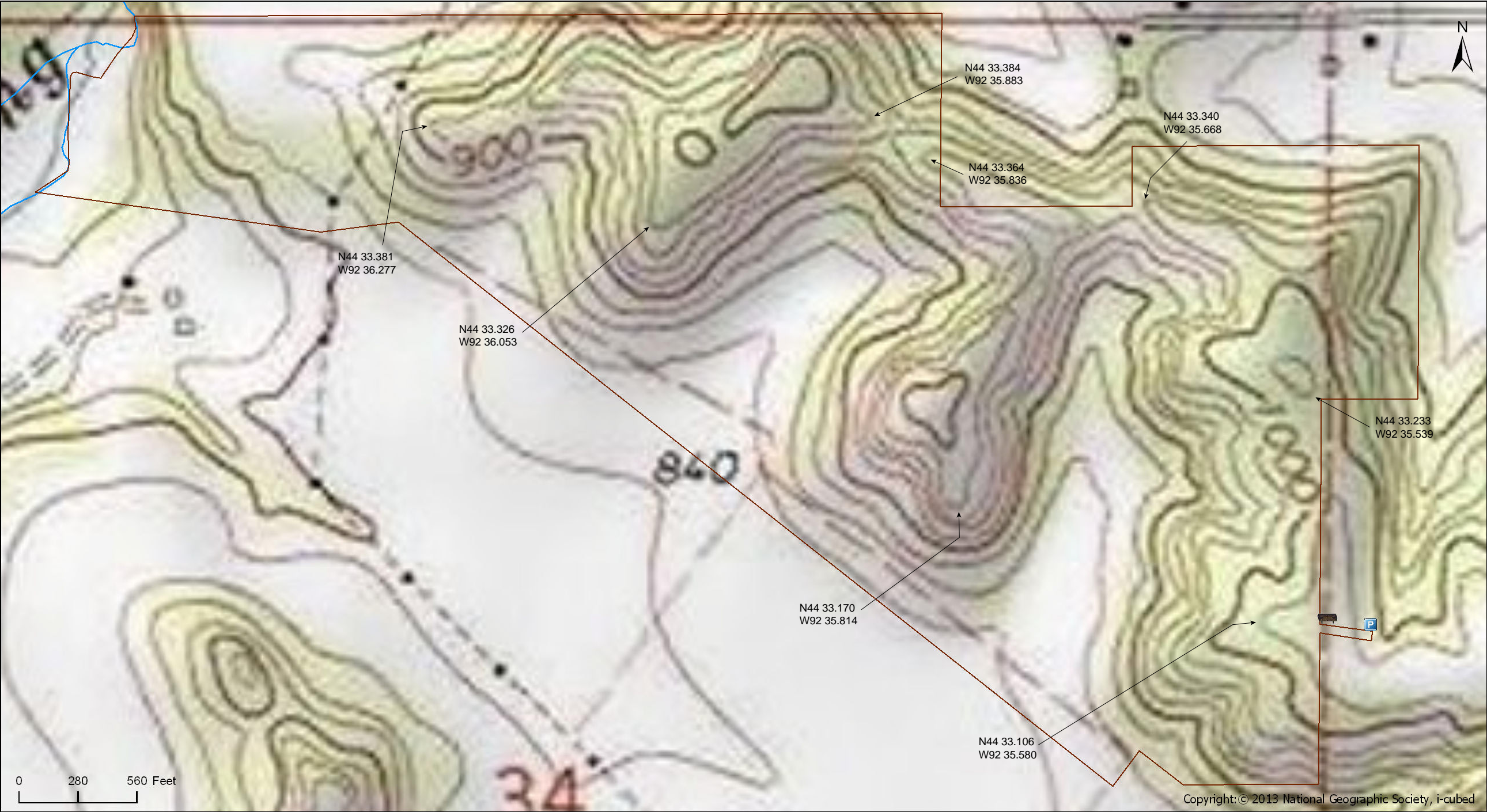
Spring Creek Prairie SNA

Goodhue County



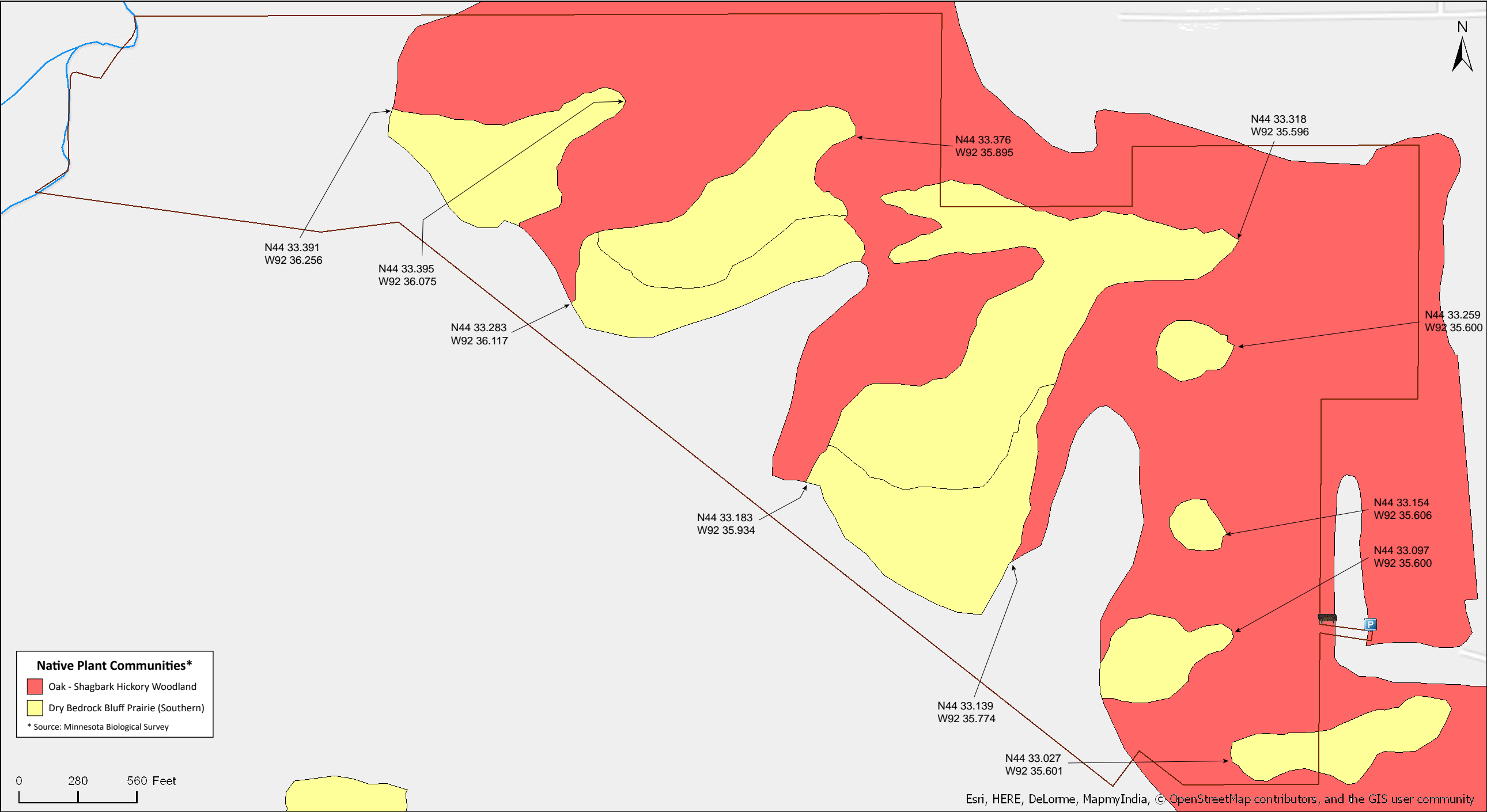
Spring Creek Prairie SNA

Goodhue County



Spring Creek Prairie SNA

Goodhue County





Spring Creek Prairie SNA

Directions and Notes from Minnesota DNR

Directions: In Red Wing off US Hwy 61 0.3 mile S on Tyler Rd, then 350 feet W on Koseck Dr, then 0.3 mile S on Old Tyler Rd, then 0.5 mile S on Red Fox Dr, then 0.2 mile W on Wild Turkey Ln. Continue on gravel access lane, past cul-de-sac. Park at wood-routed sign.

Lat/Lon: 44.551671, -92.591566

This site has no maintained trails or other recreational facilities.

Notes from MinnesotaSeasons.com

Parking

N44 33.100, W92 35.494

DISCLAIMER OF WARRANTIES AND LIMITATIONS OF LIABILITY

MinnesotaSeasons.com, The Nature Conservancy, U.S. Department of Agriculture, Forest Service, U.S. Fish and Wildlife Service, the state of Minnesota, the Minnesota Department of Natural Resources, and their employees, make no representations or warranties, express or implied, with respect to the use of or reliance on the data provided herewith, regardless of its format or means of transmission. There are no guarantees or representations to the user as to the accuracy, currency, completeness, suitability or reliability of this data for any purpose. THE USER ACCEPTS THE DATA AND/OR SOFTWARE "AS IS" AND ASSUMES ALL RISKS ASSOCIATED WITH ITS USE.

IN NO EVENT SHALL MINNESOTASEASONS.COM, TNC, USDA-FS, USFWS, OR MNDNR BE LIABLE FOR ANY DIRECT, INDIRECT, INCIDENTAL, SPECIAL, EXEMPLARY, OR CONSEQUENTIAL DAMAGES (INCLUDING, BUT NOT LIMITED TO, PROCUREMENT OF SUBSTITUTE GOODS OR SERVICES; LOSS OF USE, DATA, OR PROFITS; OR BUSINESS INTERRUPTION) HOWEVER CAUSED AND ON ANY THEORY OF LIABILITY, WHETHER IN CONTRACT, STRICT LIABILITY, OR TORT (INCLUDING NEGLIGENCE OR OTHERS) ARISING IN ANY WAY OUT OF THE USE OF THIS DATA, EVEN IF ADVISED OF THE POSSIBILITY OF SUCH DAMAGE OR FOR ANY CLAIM BY ANY OTHER PARTY.

Your use of the data is acceptance on your part of the terms and conditions set forth herein.