

Strandness Prairie

Pope County



N45 40.349  
W95 30.608

N45 40.349  
W95 30.319

Parking  
N45 40.193  
W95 30.608

N45 40.129  
W95 30.609

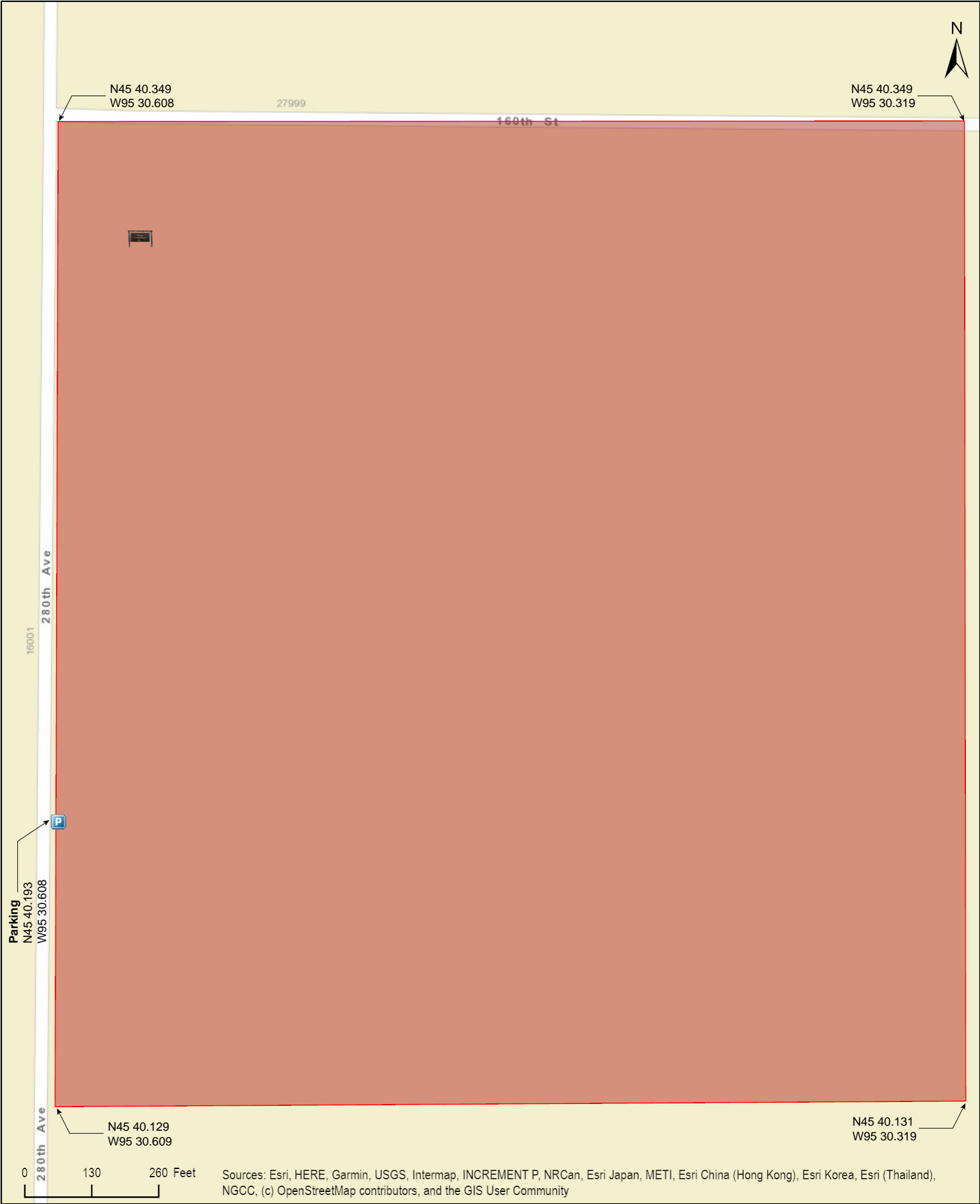
N45 40.131  
W95 30.319

0 130 260 Feet

Source: Esri, DigitalGlobe, GeoEye, Earthstar Geographics, CNES/Airbus DS, USDA, USGS, AeroGRID, IGN, and the GIS User Community

# Strandness Prairie

Pope County





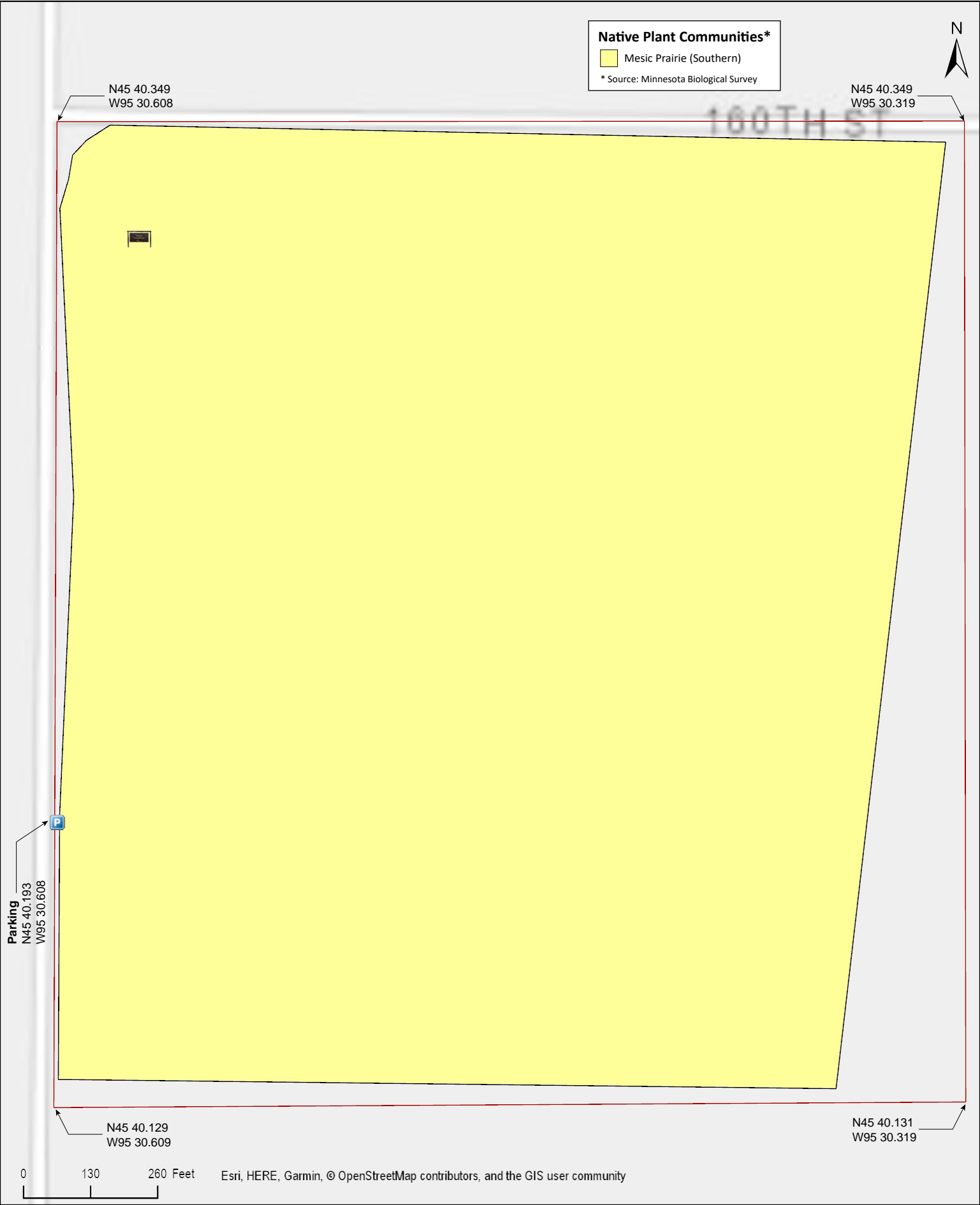
Strandness Prairie

Pope County



# Strandness Prairie

Pope County







Source: Esri, DigitalGlobe, GeoEye, Earthstar Geographics, CNES/Airbus DS, USDA, USGS, AeroGRID, IGN, and the GIS User Community

# Strandness Prairie

## **Directions and Notes from The Nature Conservancy**

### **Directions**

From Lowry, take Highway 55 to Highway 114. Travel south on Highway 114 approximately 1.4 miles to Route 83, and turn east (left). Go a half mile to a gravel road. Turn south (right) and proceed 1-1/8 mile to the parking area on the east side of the road.

From Glenwood, go west on Hwy 24 for approximately four miles. Turn north at the NSP Lowry substation and drive 7/8 mile to the parking area, which is on the right, shortly after curving around Strandness Lake and before the first intersection.

Three acres of agricultural trespass on the east edge have led to a severe problem with Canada thistle and bird's foot trefoil, which is being treated with herbicide and mowing.

## **Notes from MinnesotaSeasons.com**

### **Parking**

There is a field access/ditch crossing on the east side of 280th Ave. (Township Road 205) at the west boundary of the preserve. Park on the field access in front of the mailbox.  
N45 40.193, W95 30.608

## **DISCLAIMER OF WARRANTIES AND LIMITATIONS OF LIABILITY**

MinnesotaSeasons.com, The Nature Conservancy, U.S. Department of Agriculture, Forest Service, U.S. Fish and Wildlife Service, the state of Minnesota, the Minnesota Department of Natural Resources, and their employees, make no representations or warranties, express or implied, with respect to the use of or reliance on the data provided herewith, regardless of its format or means of transmission. There are no guarantees or representations to the user as to the accuracy, currency, completeness, suitability or reliability of this data for any purpose. THE USER ACCEPTS THE DATA AND/OR SOFTWARE "AS IS" AND ASSUMES ALL RISKS ASSOCIATED WITH ITS USE.

IN NO EVENT SHALL MINNESOTASEASONS.COM, TNC, USDA-FS, USFWS, OR MNDNR BE LIABLE FOR ANY DIRECT, INDIRECT, INCIDENTAL, SPECIAL, EXEMPLARY, OR CONSEQUENTIAL DAMAGES (INCLUDING, BUT NOT LIMITED TO, PROCUREMENT OF SUBSTITUTE GOODS OR SERVICES; LOSS OF USE, DATA, OR PROFITS; OR BUSINESS INTERRUPTION) HOWEVER CAUSED AND ON ANY THEORY OF LIABILITY, WHETHER IN CONTRACT, STRICT LIABILITY, OR TORT (INCLUDING NEGLIGENCE OR OTHERS) ARISING IN ANY WAY OUT OF THE USE OF THIS DATA, EVEN IF ADVISED OF THE POSSIBILITY OF SUCH DAMAGE OR FOR ANY CLAIM BY ANY OTHER PARTY.

Your use of the data is acceptance on your part of the terms and conditions set forth herein.