

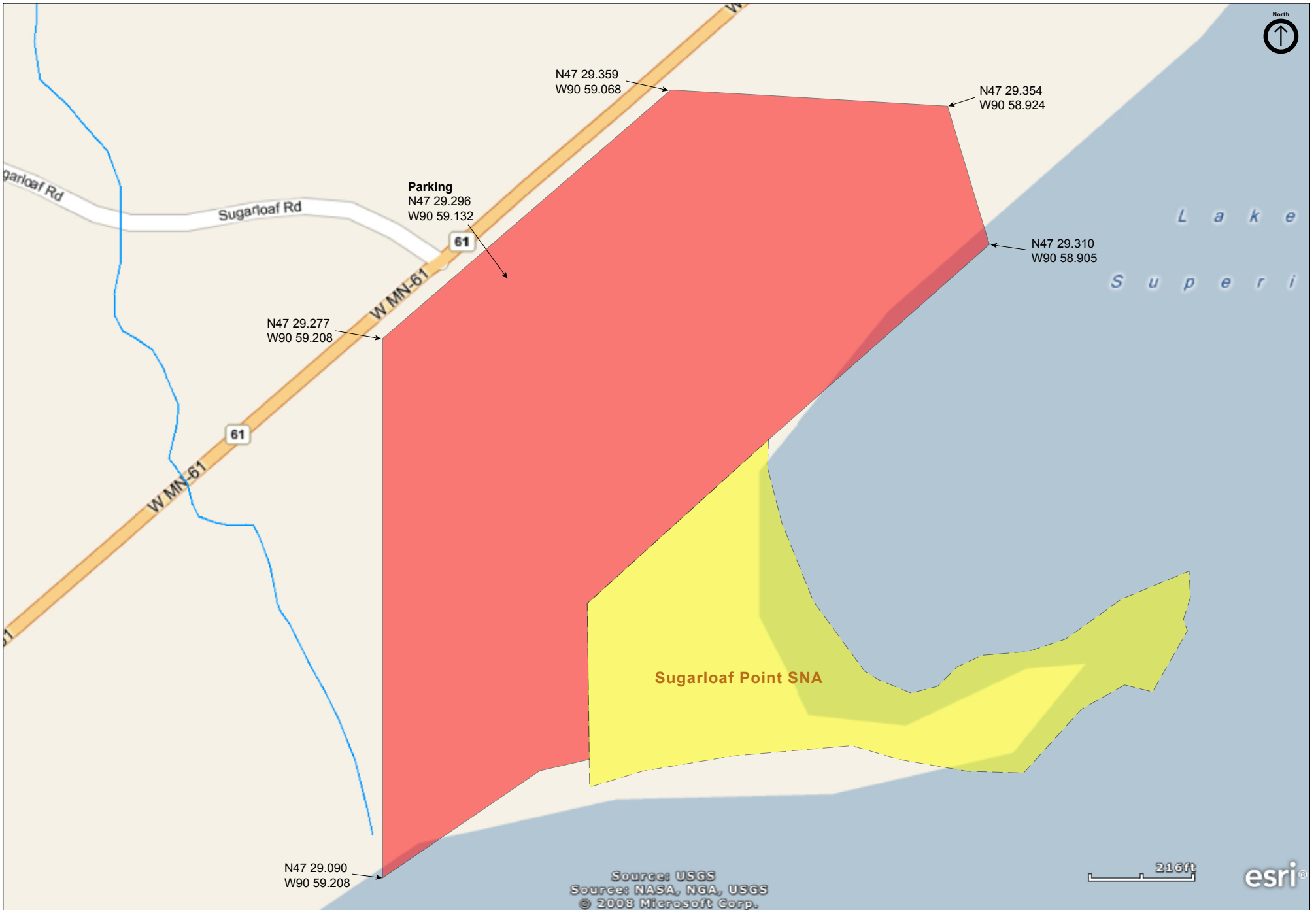
Sugarloaf Cove

Cook County



Sugarloaf Cove

Cook County



Sugarloaf Cove

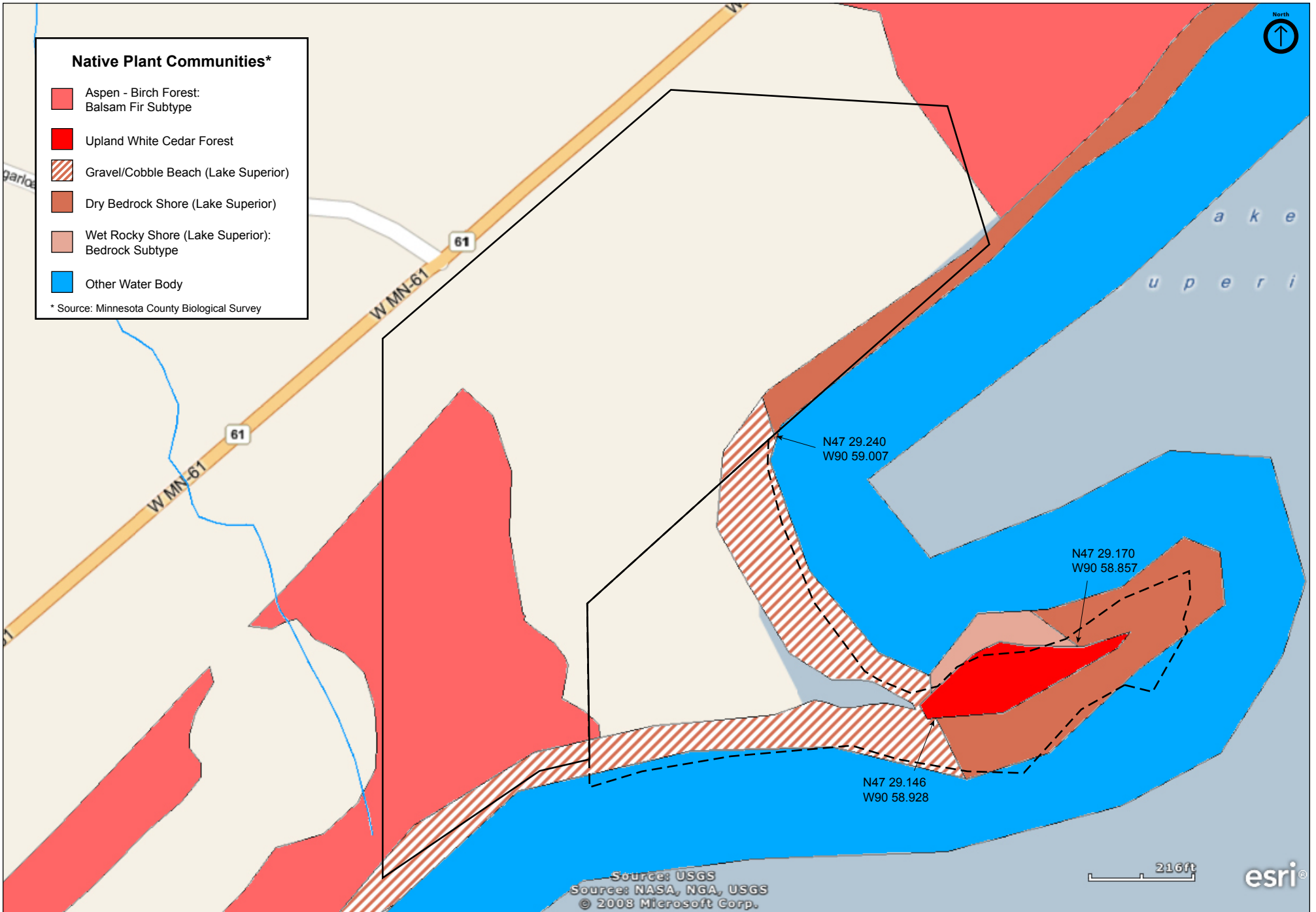
Cook County



Copyright: © 2011 National Geographic Society, i-cubed

Sugarloaf Cove

Cook County



Sugarloaf Cove

Directions and Notes from Minnesota DNR

From Little Marais 8 miles NE on MN Hwy 61. Park in lot on E. Hike trails E to site.

A interpretive trail passes through this site.

Directions and Notes from Sugarloaf: The North Shore Stewardship Association

Sugarloaf Cove is located at milepost 73 on Minnesota Highway 61, about 70 miles north of Duluth and 6 miles south of Schroeder.

When traveling north from Duluth along Highway 61, look for mile marker 73 and a brown "Sugarloaf Cove" sign on your right. Turn into the driveway, park in the lot and you can begin your interpretive trail walk from the parking area. Just grab a trail guide from the mailbox and start walking!

Our log building interpretive center is found just down the gravel road. Open hours are flexible.

The trail does not extend to Sugarloaf Point because the vegetation on the Point is very fragile. Please help us protect it by not walking out to the Point.

Notes from MinnesotaSeasons.com

Parking

N47 29.306, W90 59.116

Hiking Trails

The Sugarloaf Cove Interpretive Trail begins at the parking area and passes through the SNA.

DISCLAIMER OF WARRANTIES AND LIMITATIONS OF LIABILITY

MinnesotaSeasons.com, The Nature Conservancy, U.S. Department of Agriculture, Forest Service, U.S. Fish and Wildlife Service, the state of Minnesota, the Minnesota Department of Natural Resources, and their employees, make no representations or warranties, express or implied, with respect to the use of or reliance on the data provided herewith, regardless of its format or means of transmission. There are no guarantees or representations to the user as to the accuracy, currency, completeness, suitability or reliability of this data for any purpose. THE USER ACCEPTS THE DATA AND/OR SOFTWARE "AS IS" AND ASSUMES ALL RISKS ASSOCIATED WITH ITS USE.

IN NO EVENT SHALL MINNESOTASEASONS.COM, TNC, USDA-FS, USFWS, OR MNDNR BE LIABLE FOR ANY DIRECT, INDIRECT, INCIDENTAL, SPECIAL, EXEMPLARY, OR CONSEQUENTIAL DAMAGES (INCLUDING, BUT NOT LIMITED TO, PROCUREMENT OF SUBSTITUTE GOODS OR SERVICES; LOSS OF USE, DATA, OR PROFITS; OR BUSINESS INTERRUPTION) HOWEVER CAUSED AND ON ANY THEORY OF LIABILITY, WHETHER IN CONTRACT, STRICT LIABILITY, OR TORT (INCLUDING NEGLIGENCE OR OTHERS) ARISING IN ANY WAY OUT OF THE USE OF THIS DATA, EVEN IF ADVISED OF THE POSSIBILITY OF SUCH DAMAGE OR FOR ANY CLAIM BY ANY OTHER PARTY.

Your use of the data is acceptance on your part of the terms and conditions set forth herein.