

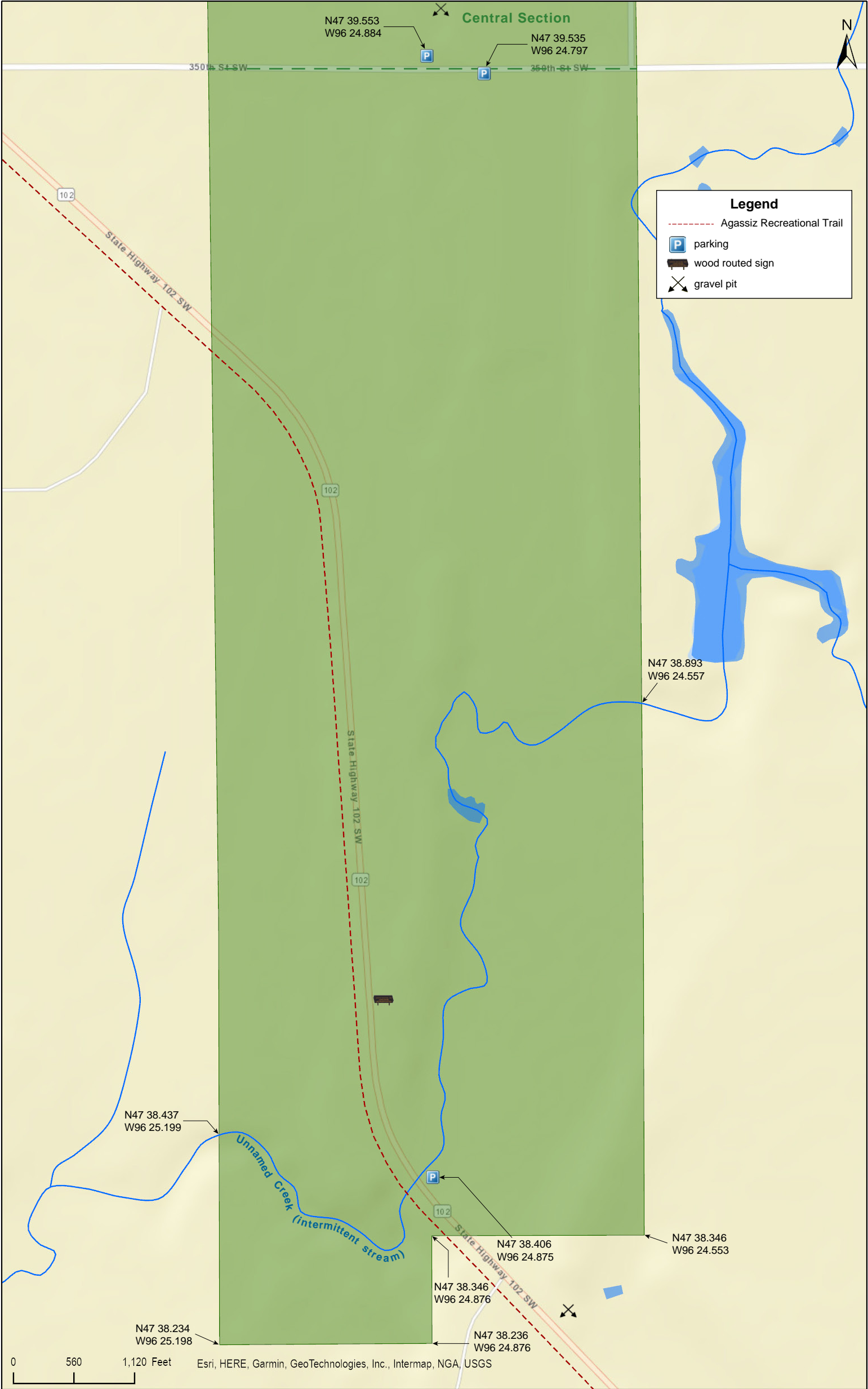
Thorson Prairie WMA
South Section

Polk County



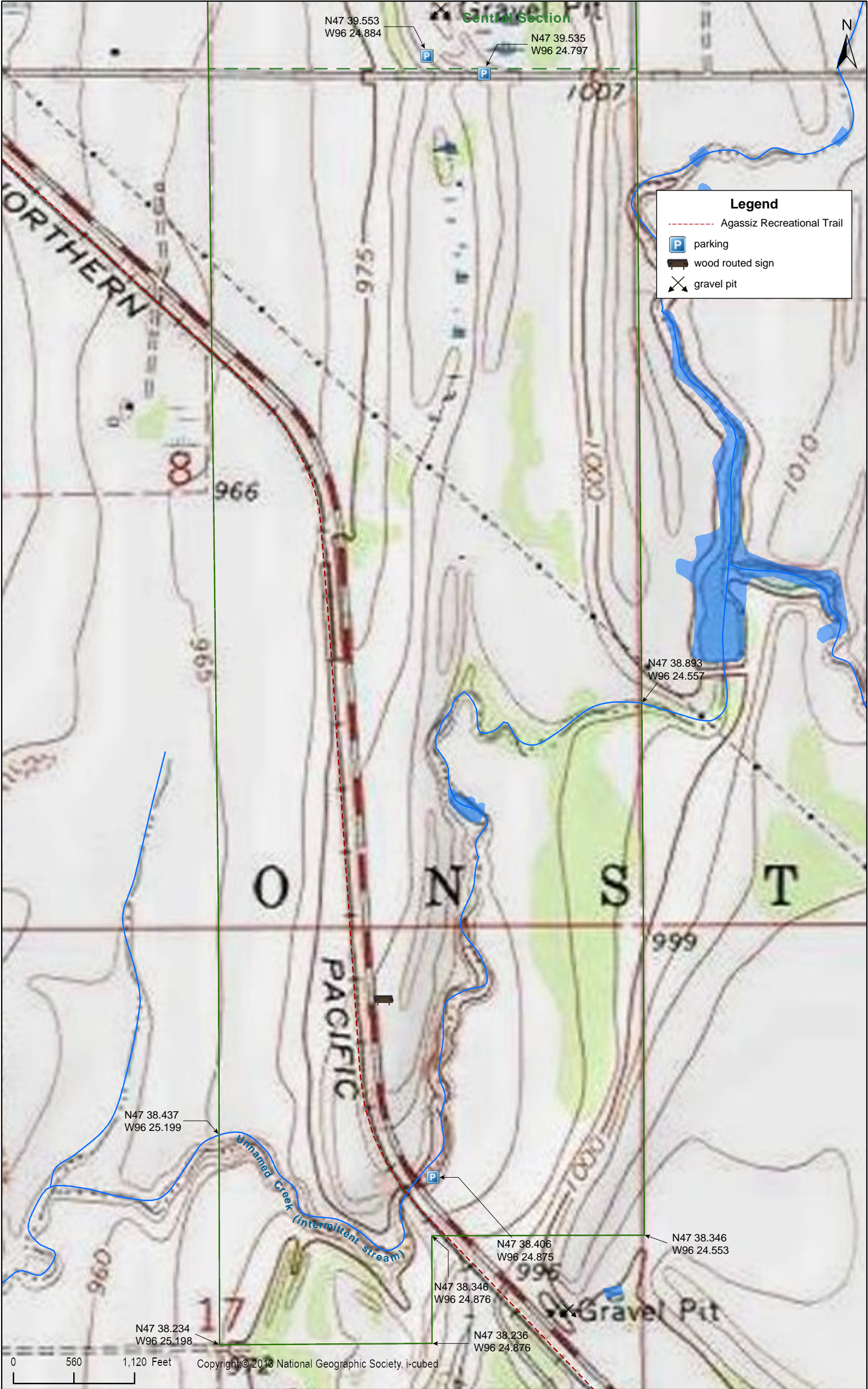
Thorson Prairie WMA
South Section

Polk County



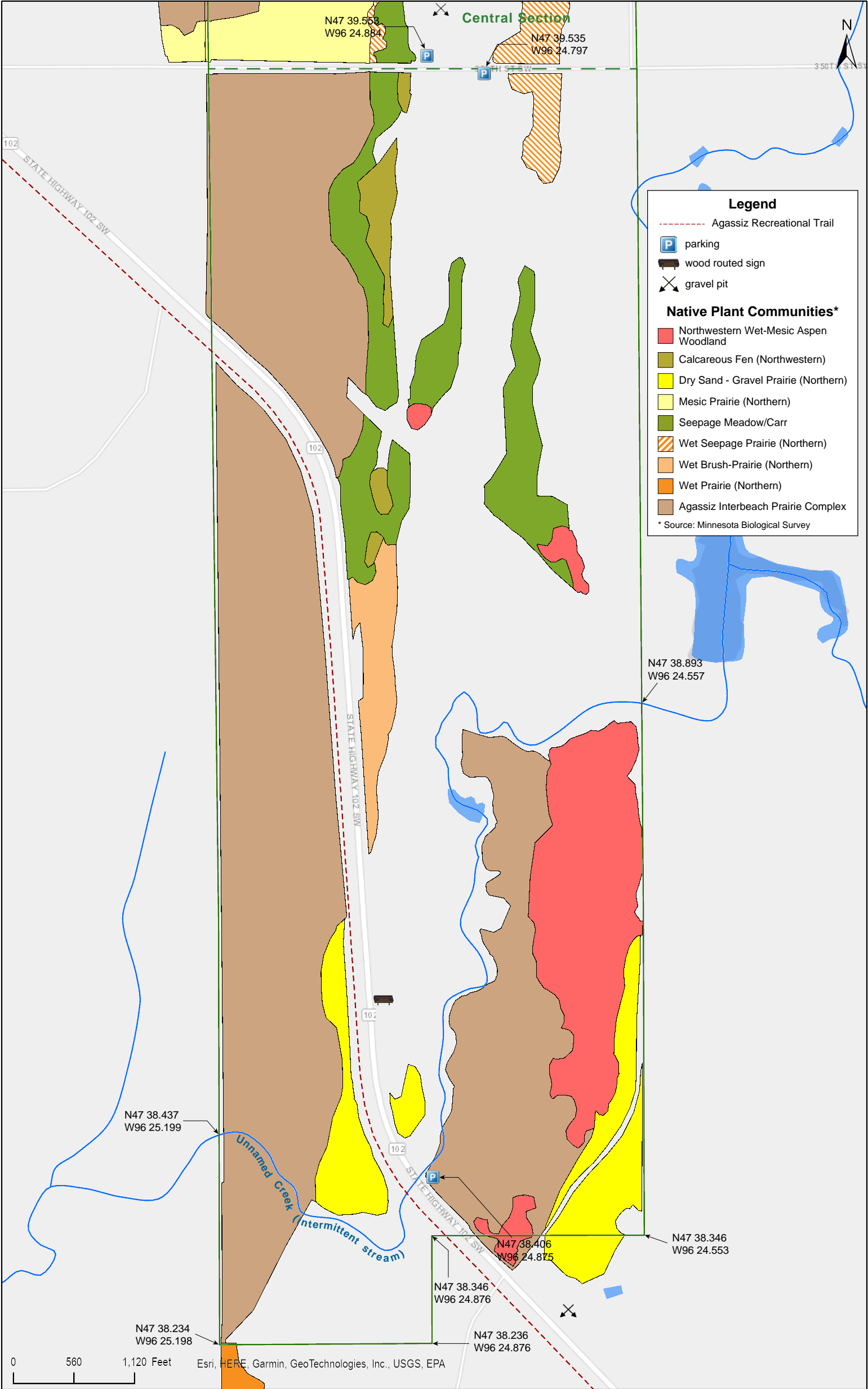
Thorson Prairie WMA
South Section

Polk County



Thorson Prairie WMA
South Section

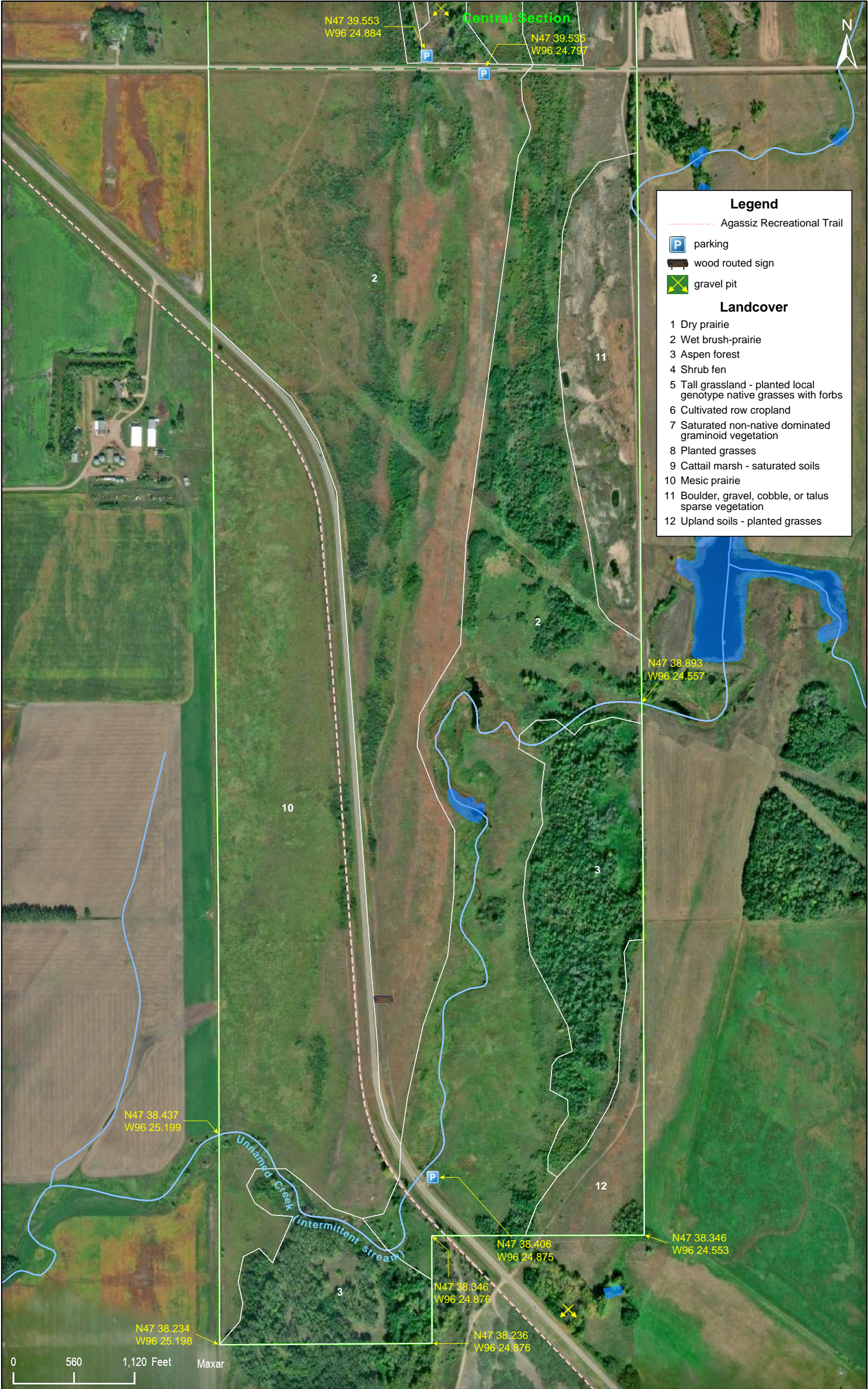
Polk County



Thorson Prairie WMA
South Section

Landcover

Polk County



Thorson Prairie WMA
South Section

National Wetlands Inventory

Polk County



Thorson Prairie WMA
South Section

Directions and Notes from Minnesota DNR

Directions

From Crookston, go 1.5 miles E on US Hwy2 then 1 mile S on MN 9, then 4.5 miles SE on State Highway 102 then 4 miles east on CR 45 and 1.5 miles south on a township road.

Notes from MinnesotaSeasons.com

Parking

350th St. SW (North):
N47 39.553, W96 24.884

350th St. SW (South):
N47 39.535, W96 24.797

MN Hwy 102
N47 38.406, W96 24.875

DISCLAIMER OF WARRANTIES AND LIMITATIONS OF LIABILITY

MinnesotaSeasons.com, The Nature Conservancy, U.S. Department of Agriculture, Forest Service, U.S. Fish and Wildlife Service, the state of Minnesota, the Minnesota Department of Natural Resources, and their employees, make no representations or warranties, express or implied, with respect to the use of or reliance on the data provided herewith, regardless of its format or means of transmission. There are no guarantees or representations to the user as to the accuracy, currency, completeness, suitability or reliability of this data for any purpose. THE USER ACCEPTS THE DATA AND/OR SOFTWARE "AS IS" AND ASSUMES ALL RISKS ASSOCIATED WITH ITS USE.

IN NO EVENT SHALL MINNESOTASEASONS.COM, TNC, USDA-FS, USFWS, OR MNDNR BE LIABLE FOR ANY DIRECT, INDIRECT, INCIDENTAL, SPECIAL, EXEMPLARY, OR CONSEQUENTIAL DAMAGES (INCLUDING, BUT NOT LIMITED TO, PROCUREMENT OF SUBSTITUTE GOODS OR SERVICES; LOSS OF USE, DATA, OR PROFITS; OR BUSINESS INTERRUPTION) HOWEVER CAUSED AND ON ANY THEORY OF LIABILITY, WHETHER IN CONTRACT, STRICT LIABILITY, OR TORT (INCLUDING NEGLIGENCE OR OTHERS) ARISING IN ANY WAY OUT OF THE USE OF THIS DATA, EVEN IF ADVISED OF THE POSSIBILITY OF SUCH DAMAGE OR FOR ANY CLAIM BY ANY OTHER PARTY.

Your use of the data is acceptance on your part of the terms and conditions set forth herein.