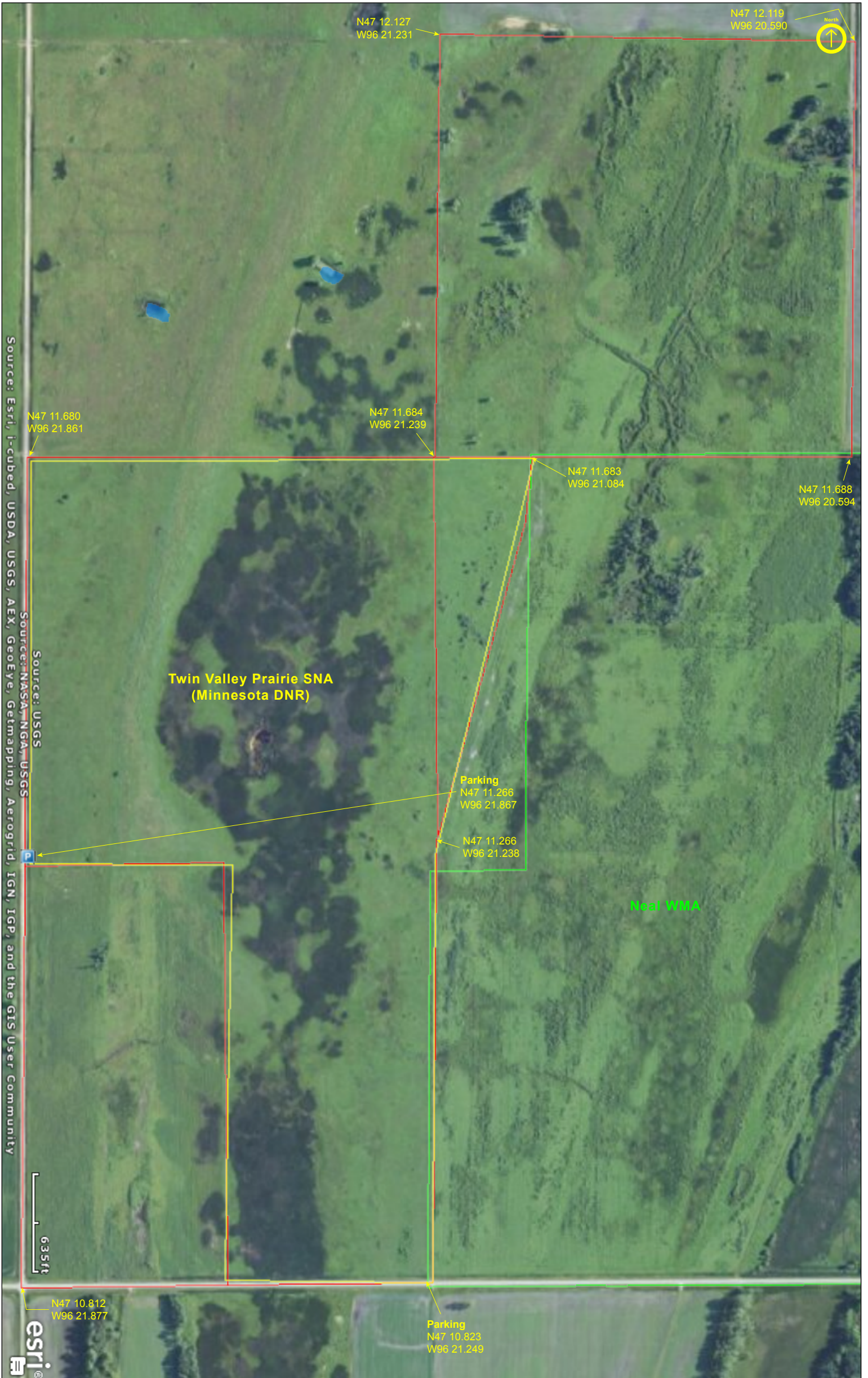


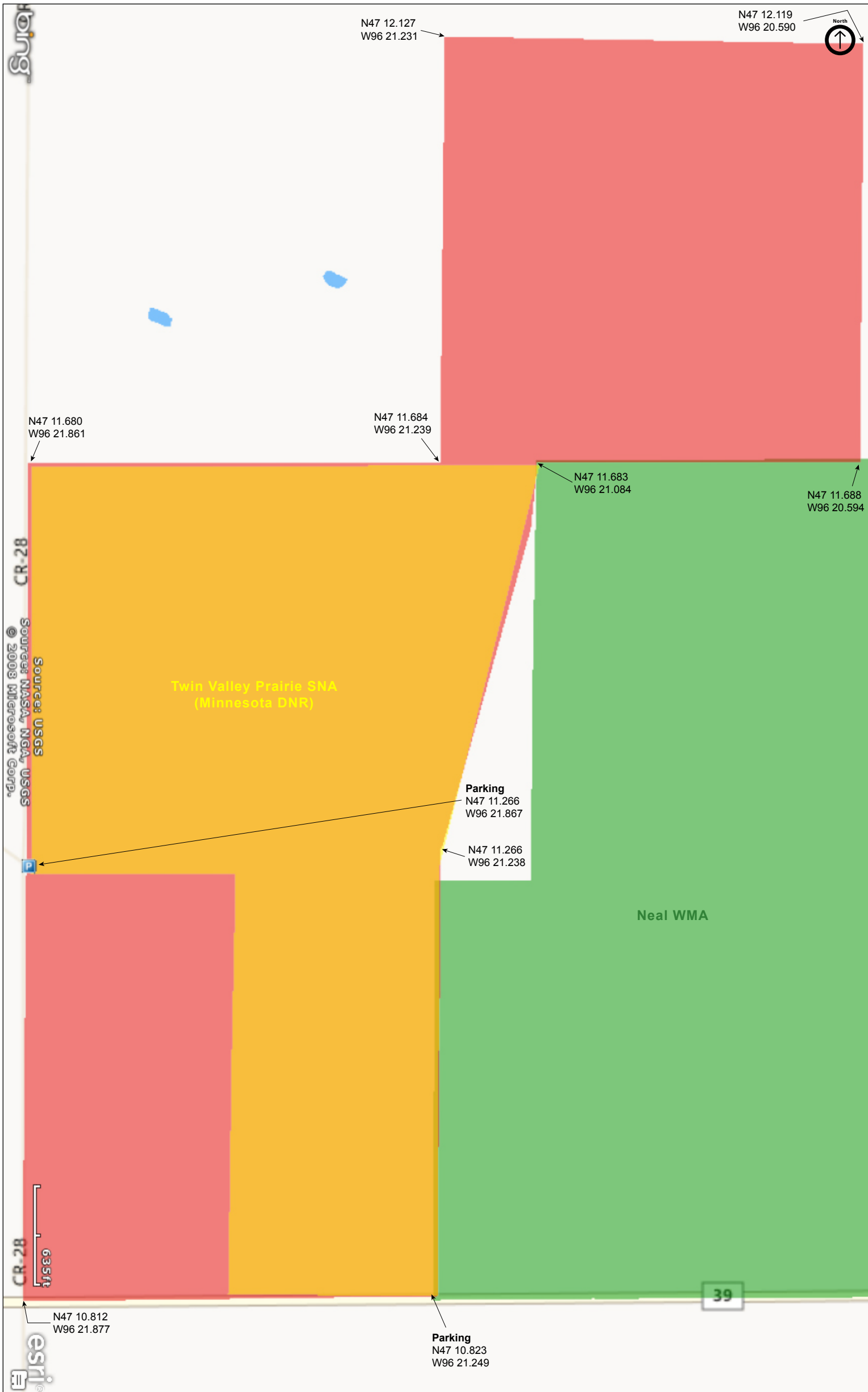
Twin Valley Prairie Preserve

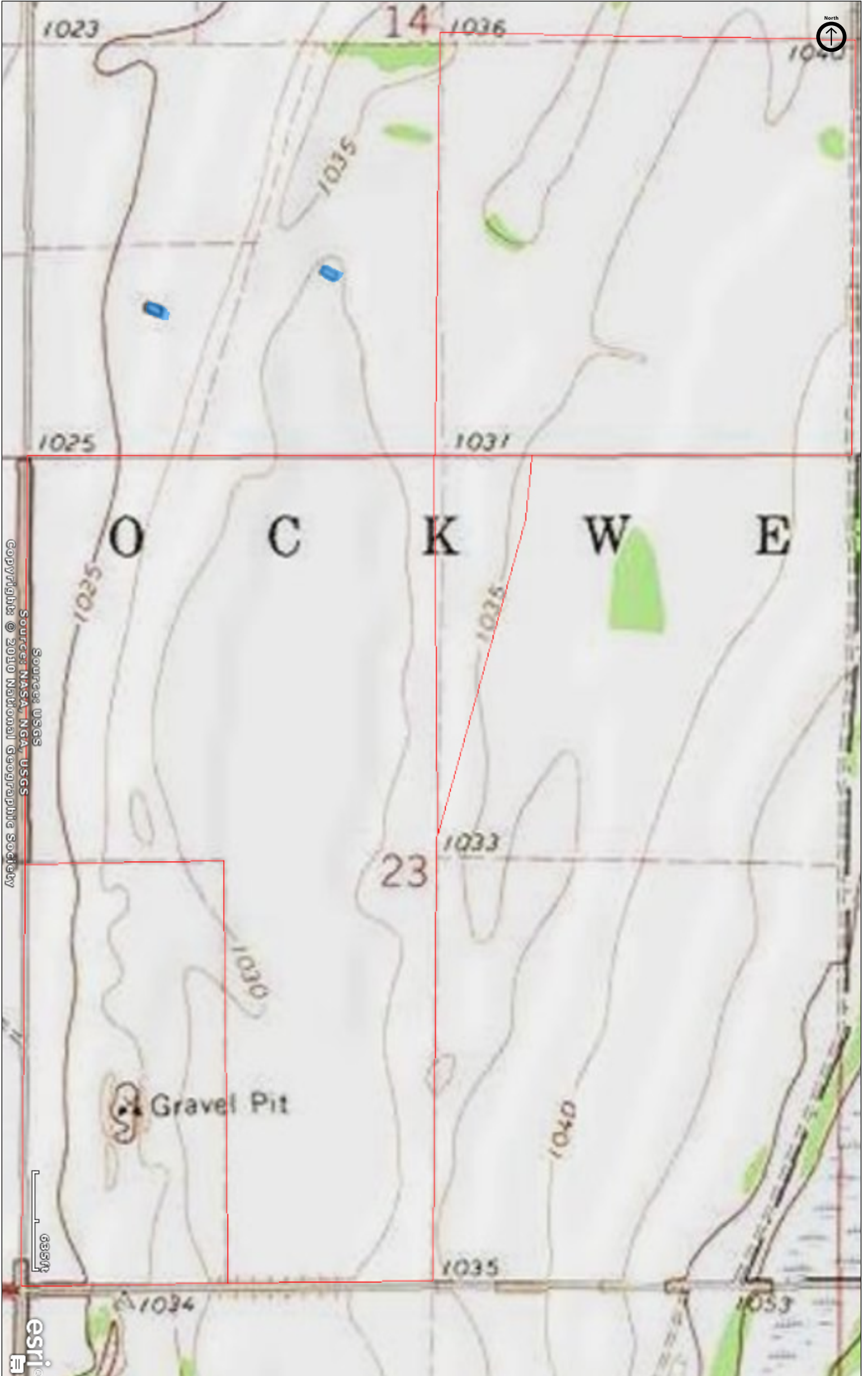
Norman County



Twin Valley Prairie Preserve

Norman County





Source: USGS
Source: NASA, NGA, USGS
Copyright © 2010 National Geographic Society

Twin Valley Prairie Preserve

Norman County



Native Plant Communities*

- Northwestern Wet-Mesic Aspen Woodland
- Cattail - Sedge Marsh (Northern)
- Cattail - Sedge Marsh (Prairie)
- Dry Sand - Gravel Prairie (Northern)
- Mesic Prairie (Northern)
- Prairie Meadow/Carr
- Wet Prairie (Northern)
- Wet Saline Prairie (Northern)

* Source: Minnesota County Biological Survey

N47 11.958
W96 21.232

N47 11.745
W96 21.219

N47 11.681
W96 21.633

N47 11.682
W96 21.460

N47 11.257
W96 21.551

N47 11.268
W96 21.618

N47 11.153
W96 21.554

N47 11.095
W96 21.505

N47 11.178
W96 21.296

N47 11.063
W96 21.241

Source: USGS
Source: NASA, NOAA, USGS
Copyright © 2012 Esri, DeLorme, NAVTEQ



39



Twin Valley Prairie Preserve

Directions and Notes from Minnesota DNR

From Twin Valley 5 miles S on MN Hwy 32, then 4.5 miles W on Co Hwy 39, then 0.5 mile N on Co Rd 28. Park in pull-off on E.

This site has no maintained trails or other recreational facilities.

Neal WMA is adjacent to this site.

This site is owned by The Nature Conservancy.

Directions and Notes from The Nature Conservancy

From Twin Valley, take State Highway 32 about five miles south to the intersection with county roads 39 and 113. Turn west and travel four-and-a-half miles. The preserve is on the north side of the highway and is marked with The Nature Conservancy signs.

Notes from MinnesotaSeasons.com

Parking

West Parking (County Road 28)
N47 11.266, W96 21.867

South Parking (County Road 39)
N47 10.823, W96 21.249

This preserve includes the Twin Valley Prairie SNA.

It is bordered on the east by Neal WMA.

DISCLAIMER OF WARRANTIES AND LIMITATIONS OF LIABILITY

MinnesotaSeasons.com, The Nature Conservancy, U.S. Department of Agriculture, Forest Service, U.S. Fish and Wildlife Service, the state of Minnesota, the Minnesota Department of Natural Resources, and their employees, make no representations or warranties, express or implied, with respect to the use of or reliance on the data provided herewith, regardless of its format or means of transmission. There are no guarantees or representations to the user as to the accuracy, currency, completeness, suitability or reliability of this data for any purpose. THE USER ACCEPTS THE DATA AND/OR SOFTWARE "AS IS" AND ASSUMES ALL RISKS ASSOCIATED WITH ITS USE.

IN NO EVENT SHALL MINNESOTASEASONS.COM, TNC, USDA-FS, USFWS, OR MNDNR BE LIABLE FOR ANY DIRECT, INDIRECT, INCIDENTAL, SPECIAL, EXEMPLARY, OR CONSEQUENTIAL DAMAGES (INCLUDING, BUT NOT LIMITED TO, PROCUREMENT OF SUBSTITUTE GOODS OR SERVICES; LOSS OF USE, DATA, OR PROFITS; OR BUSINESS INTERRUPTION) HOWEVER CAUSED AND ON ANY THEORY OF LIABILITY, WHETHER IN CONTRACT, STRICT LIABILITY, OR TORT (INCLUDING NEGLIGENCE OR OTHERS) ARISING IN ANY WAY OUT OF THE USE OF THIS DATA, EVEN IF ADVISED OF THE POSSIBILITY OF SUCH DAMAGE OR FOR ANY CLAIM BY ANY OTHER PARTY.

Your use of the data is acceptance on your part of the terms and conditions set forth herein.