

Two Rivers Aspen Prairie Parkland SNA

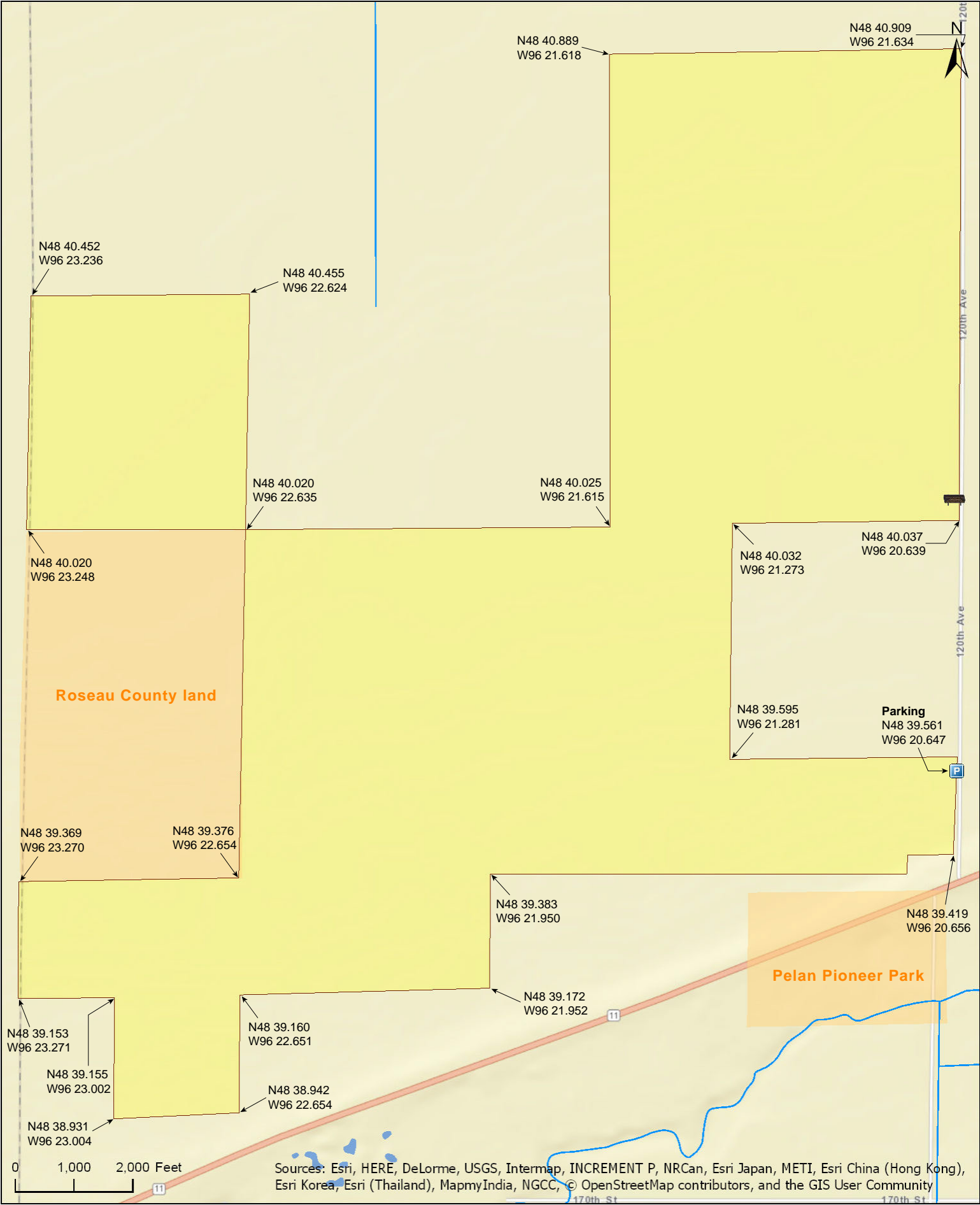
Roseau County





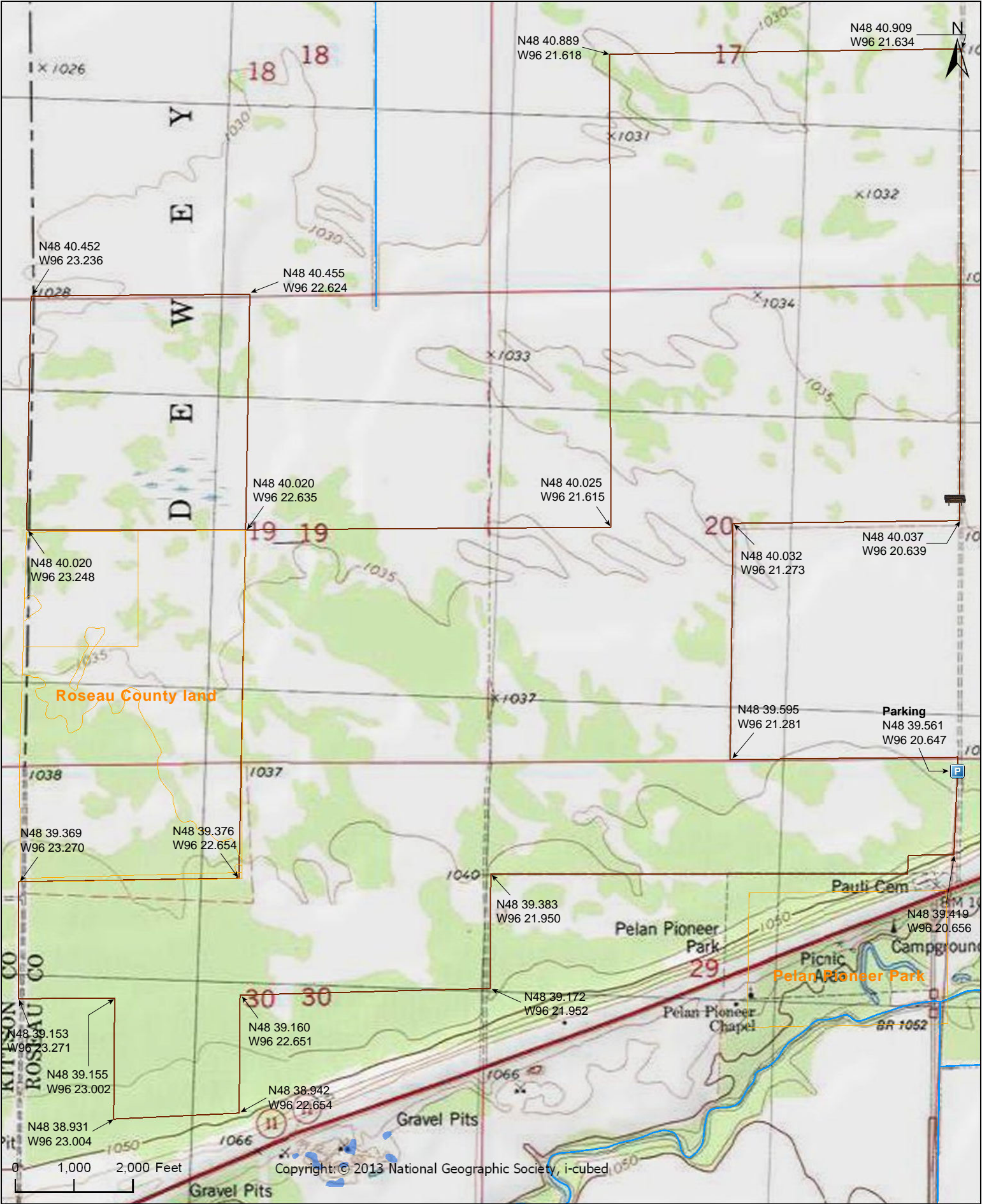
Two Rivers Aspen Prairie Parkland SNA

Roseau County



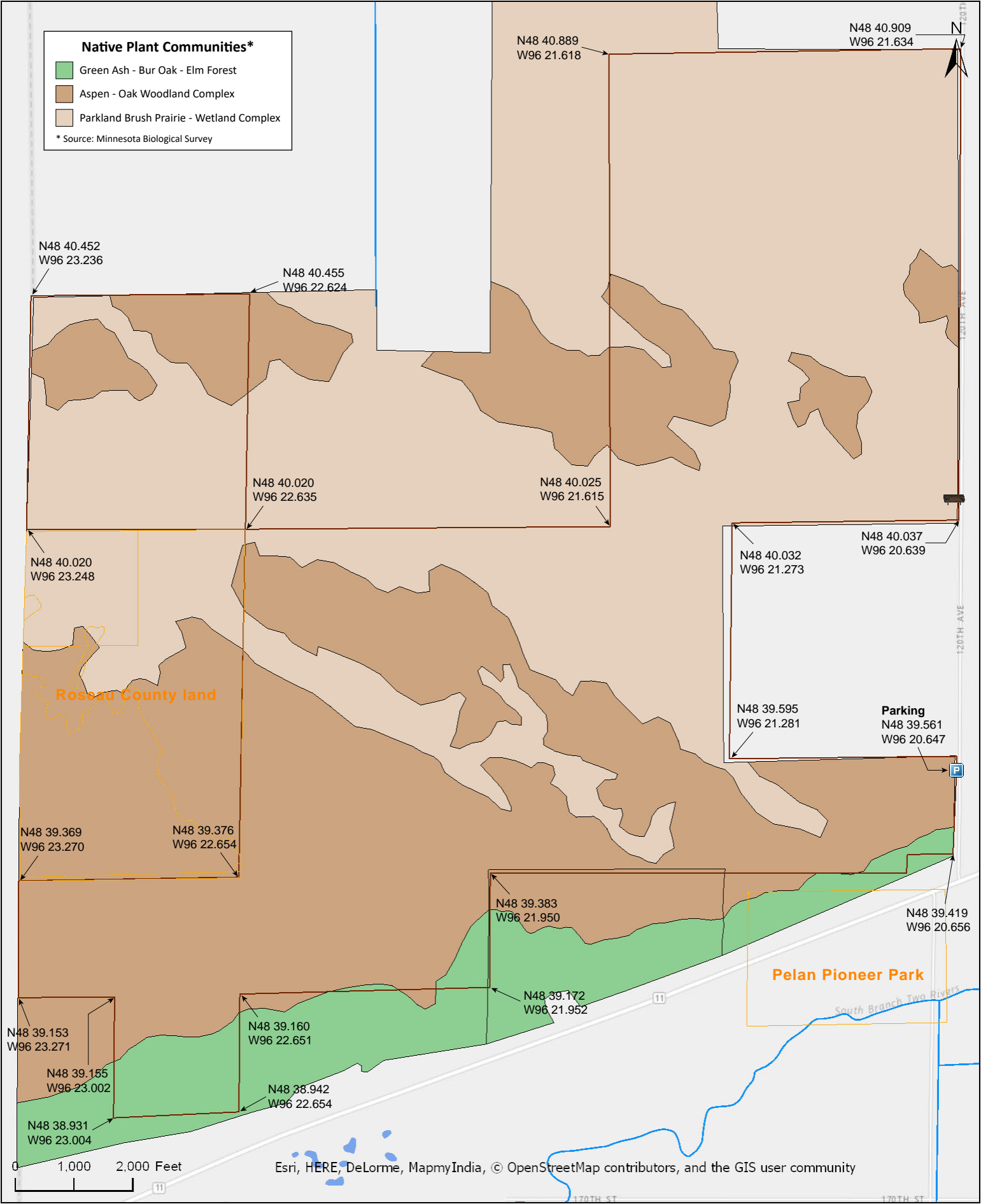
Two Rivers Aspen Prairie Parkland SNA

Roseau County



Two Rivers Aspen Prairie Parkland SNA

Roseau County







# Two Rivers Aspen Prairie Parkland SNA

## **Directions and Notes from Minnesota DNR**

**Directions:** From Karlstad 10.6 miles NE on MN Hwy 11, then 0.25 mile N on minimum maintenance road, just after Pauli Cemetery. Park on W road shoulder.

**Lat/Lon:** 48.659344, -96.344114

This site is in an Audubon Important Bird Area.

## **Notes from MinnesotaSeasons.com**

### **Parking**

N48 39.561, W96 20.647

The eastern edge of this SNA is mostly dense aspen forest. In the interior, areas of wet prairie are interspersed with and surrounded by dense aspen woods and willow thicket.

### **Snowmobile Trail**

The maintained snowmobile trail mentioned by the DNR is the Pelan Trail/Roseau Trailblazers/BISF #1 Trail. It is adjacent to the eastern boundary of the SNA. It does not pass through the site.

## **DISCLAIMER OF WARRANTIES AND LIMITATIONS OF LIABILITY**

MinnesotaSeasons.com, The Nature Conservancy, U.S. Department of Agriculture, Forest Service, U.S. Fish and Wildlife Service, the state of Minnesota, the Minnesota Department of Natural Resources, and their employees, make no representations or warranties, express or implied, with respect to the use of or reliance on the data provided herewith, regardless of its format or means of transmission. There are no guarantees or representations to the user as to the accuracy, currency, completeness, suitability or reliability of this data for any purpose. THE USER ACCEPTS THE DATA AND/OR SOFTWARE "AS IS" AND ASSUMES ALL RISKS ASSOCIATED WITH ITS USE.

IN NO EVENT SHALL MINNESOTASEASONS.COM, TNC, USDA-FS, USFWS, OR MNDNR BE LIABLE FOR ANY DIRECT, INDIRECT, INCIDENTAL, SPECIAL, EXEMPLARY, OR CONSEQUENTIAL DAMAGES (INCLUDING, BUT NOT LIMITED TO, PROCUREMENT OF SUBSTITUTE GOODS OR SERVICES; LOSS OF USE, DATA, OR PROFITS; OR BUSINESS INTERRUPTION) HOWEVER CAUSED AND ON ANY THEORY OF LIABILITY, WHETHER IN CONTRACT, STRICT LIABILITY, OR TORT (INCLUDING NEGLIGENCE OR OTHERS) ARISING IN ANY WAY OUT OF THE USE OF THIS DATA, EVEN IF ADVISED OF THE POSSIBILITY OF SUCH DAMAGE OR FOR ANY CLAIM BY ANY OTHER PARTY.

Your use of the data is acceptance on your part of the terms and conditions set forth herein.